

User Manual

Revision 1.101
English

M-Bus - Repeater - Isolator

(Order Code: HD67032M, HD67032-B2-40, HD67032-B2-80, HD67032-B2-160, HD67032-B2-250)

for Website information:

www.adfweb.com?Product=HD67032M
www.adfweb.com?Product=HD67032-B2-40
www.adfweb.com?Product=HD67032-B2-80
www.adfweb.com?Product=HD67032-B2-160
www.adfweb.com?Product=HD67032-B2-250

for Price information:

www.adfweb.com?Price=HD67032M
www.adfweb.com?Price=HD67032-B2-40
www.adfweb.com?Price=HD67032-B2-80
www.adfweb.com?Price=HD67032-B2-160
www.adfweb.com?Price=HD67032-B2-250

Benefits and Main Features:

- ⊕ Very easy to configure
- ⊕ Electrical isolation of M-Bus branches
- ⊕ Industrial temperature range: -40°C / 70°C (-40°F / 158°F)



User Manual

For other M-Bus products see also the following link:

Converter M-Bus /

www.adfweb.com?Product=HD67021 (RS232)
www.adfweb.com?Product=HD67022 (RS485)
www.adfweb.com?Product=HD67030 (Ethernet)

M-Bus Analyzer - Scanner -Sniffer

www.adfweb.com?Product=HD67031

M-Bus / Modbus - Converter

www.adfweb.com?Product=HD67029M-232 (Modbus on RS232)
www.adfweb.com?Product=HD67029M-485 (Modbus on RS485)

M-Bus / Modbus TCP - Converter

www.adfweb.com?Product=HD67044

M-Bus / CANopen - Converter

www.adfweb.com?Product=HD67051-B2

M-Bus Master / PROFIBUS DP Slave - Converter

www.adfweb.com?Product=HD67053M

M-Bus - Concentrator - Datalogger

www.adfweb.com?Product=HD67054M

M-Bus Slave / Modbus Master - Converter

www.adfweb.com?Product=HD67059M-232

Do you have an your customer protocol? Then go to:

www.adfweb.com?Product=HD67003

Do you need to choose a device? Do you want help?

www.adfweb.com?Cmd=helpme

INDEX:

	Page
INDEX	2
UPDATED DOCUMENTATION	2
REVISION LIST	2
WARNING	2
TRADEMARKS	2
SECURITY ALERT	3
CONNECTION SCHEME	4
EXAMPLES OF CONNECTION	6
CHARACTERISTICS	9
CONFIGURATION	9
POWER SUPPLY	10
FUNCTION MODES	11
LEDS	12
M-BUS	14
RS232 (FOR HD67032M)	14
ETHERNET (FOR HD67032-B2-XXX)	15
USE OF COMPOSITOR SW67032	16
NEW / OPEN CONFIGURATION	17
SOFTWARE OPTIONS	18
SET COMMUNICATION	19
UPDATE DEVICE (FOR HD67032M)	20
UPDATE DEVICE (FOR HD67032-B2-XXX)	21
DOWNLOAD CONF.	23
MECHANICAL DIMENSIONS	24
ORDERING INFORMATIONS	26
ACCESSORIES	27
DISCLAIMER	28
OTHER REGULATIONS AND STANDARDS	28
WARRANTIES AND TECHNICAL SUPPORT	29
RETURN POLICY	29

UPDATED DOCUMENTATION:

Dear customer, we thank you for your attention and we remind you that you need to check that the following document is:

- Updated
- Related to the product you own

To obtain the most recently updated document, note the “document code” that appears at the top right-hand corner of each page of this document.

With this “Document Code” go to web page www.adfweb.com/download/ and search for the corresponding code on the page. Click on the proper “Document Code” and download the updates.

REVISION LIST:

Revision	Date	Author	Chapter	Description
1.004	04/04/2013	Fl	All	Revision
1.005	23/12/2013	Fl	All	Revision
1.100	15/12/2015	Ff	All	Added new hardware version
1.101	29/01/2016	Ff	All	Revision

WARNING:

ADFweb.com reserves the right to change information in this manual about our product without warning.
ADFweb.com is not responsible for any error this manual may contain.

TRADEMARKS:

All trademarks mentioned in this document belong to their respective owners.

SECURITY ALERT:**GENERAL INFORMATION**

To ensure safe operation, the device must be operated according to the instructions in the manual. When using the device, legal and safety regulation are required for each individual application. The same applies also when using accessories.

INTENDED USE

Machines and systems must be designed so the faulty conditions do not lead to a dangerous situation for the operator (i.e. independent limit switches, mechanical interlocks, etc.).

QUALIFIED PERSONNEL

The device can be used only by qualified personnel, strictly in accordance with the specifications. Qualified personnel are persons who are familiar with the installation, assembly, commissioning and operation of this equipment and who have appropriate qualifications for their job.

RESIDUAL RISKS

The device is state-of-the-art and is safe. The instruments can represent a potential hazard if they are inappropriately installed and operated by untrained personnel. These instructions refer to residual risks with the following symbol:

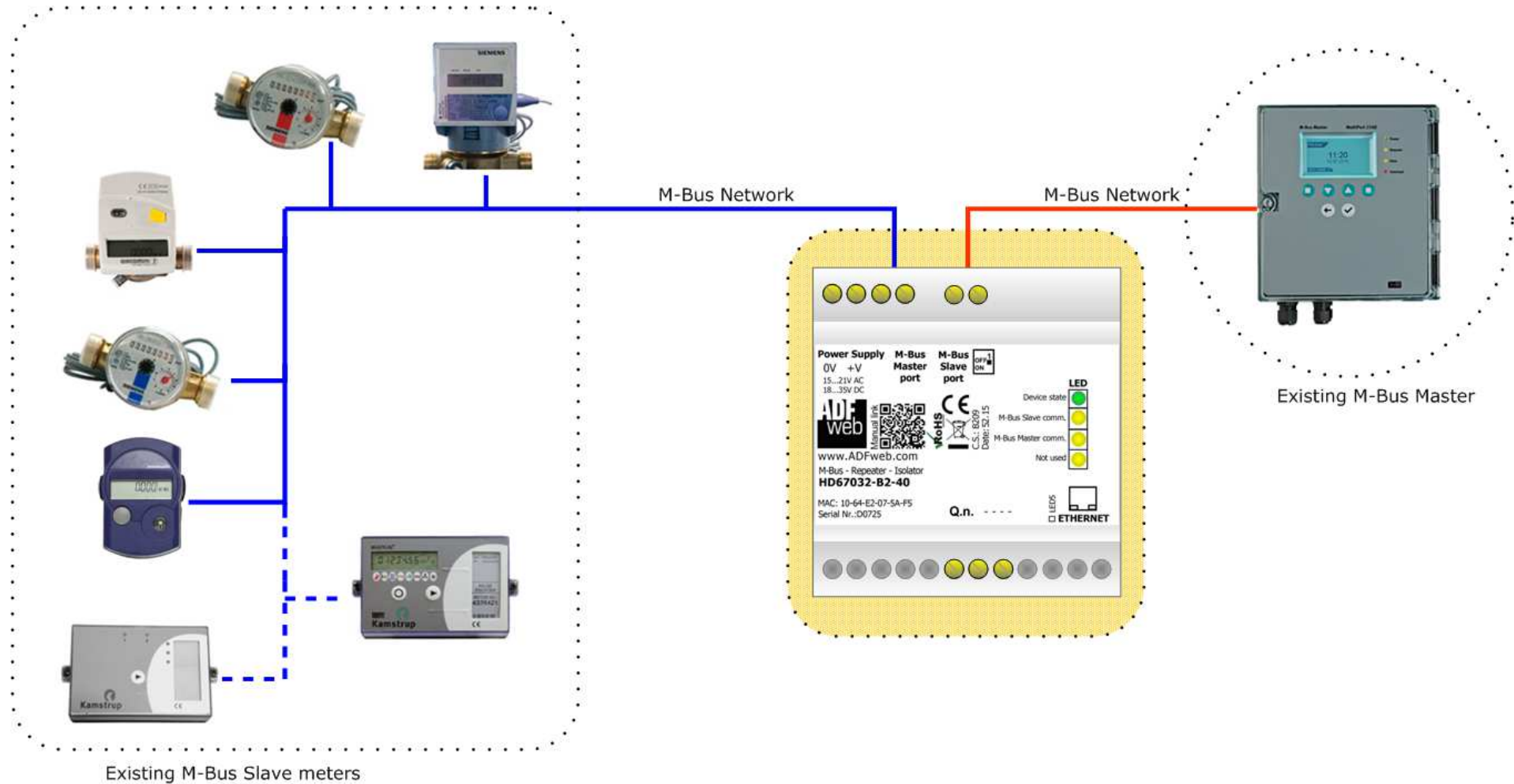


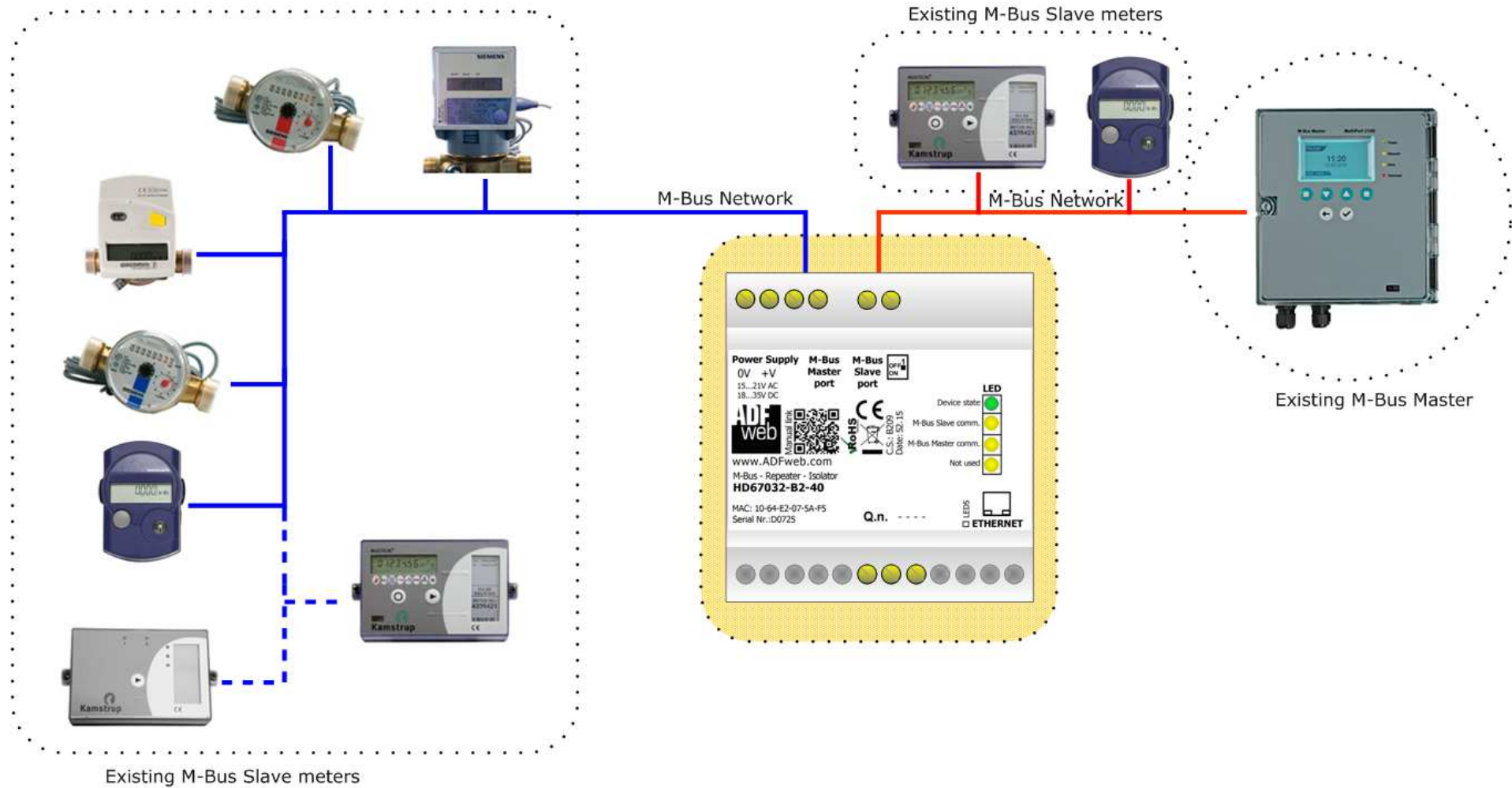
This symbol indicates that non-observance of the safety instructions is a danger for people that could lead to serious injury or death and / or the possibility of damage.

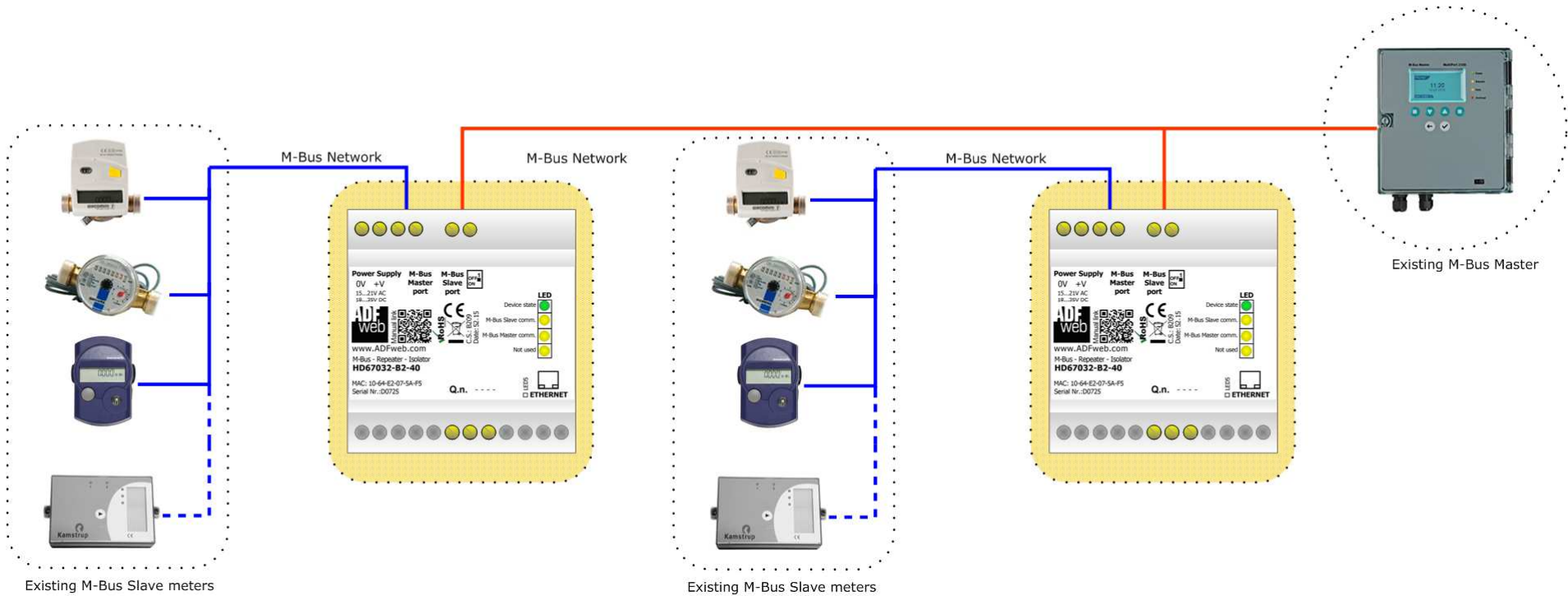
CE CONFORMITY

The declaration is made by our company. You can send an email to support@adfweb.com or give us a call if you need it.

EXAMPLES OF CONNECTION:







CONNECTION SCHEME:

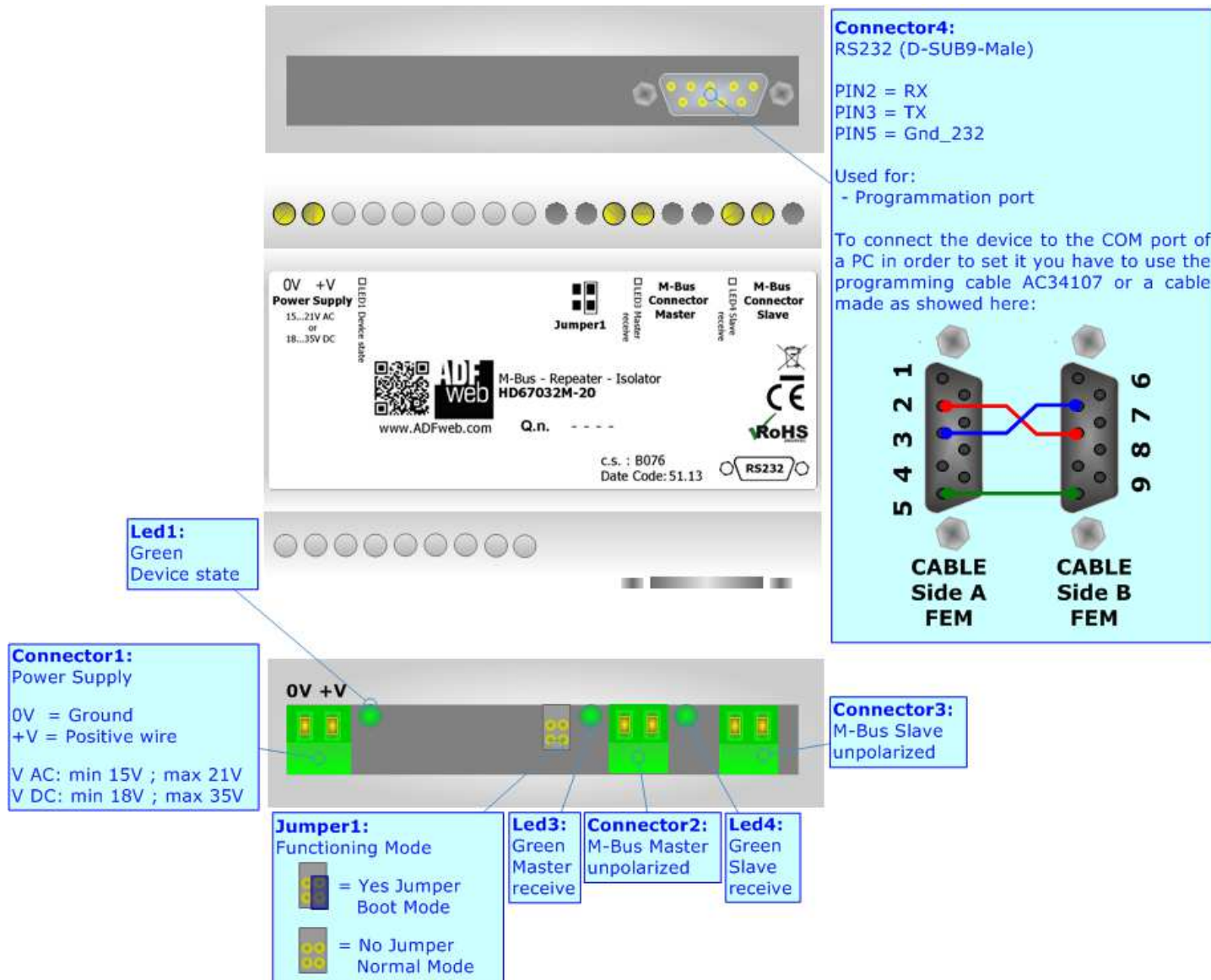


Figure 1a: Connection scheme for HD67032M-20

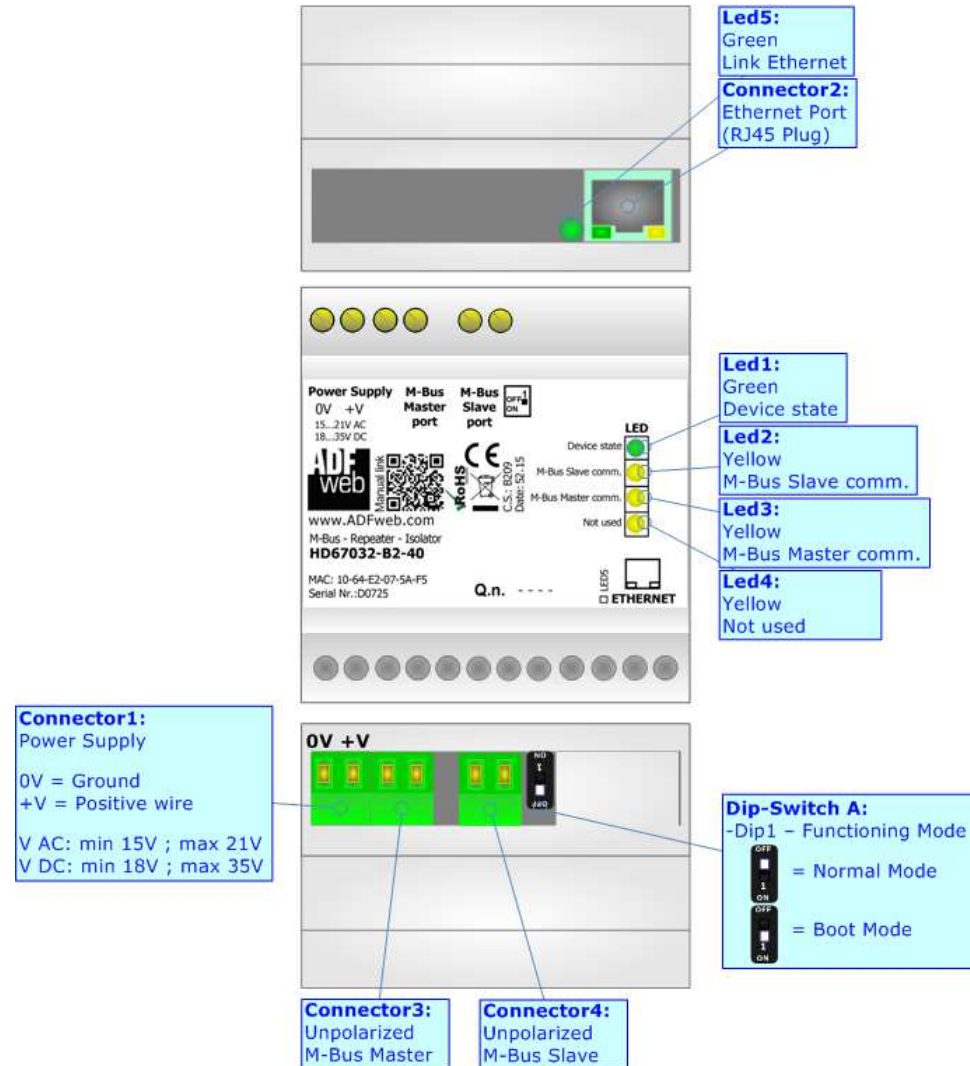


Figure 1b: Connection scheme for HD67032-B2-40/80/160/250


CHARACTERISTICS:


The HD67032 series are M-Bus - Repeater- Isolator with the following features:

- Electrical isolation of M-Bus branches;
- Baud Rate and Parity changeable with software;
- Mountable on 35mm DIN Rail;
- Power Supply 15...21V AC or 18...35V DC;
- Temperature range -40°C to 70°C.

At the Gateway can be connected up to 250 standard M-Bus devices. This number depends of the code expressed by the xxx number:

- HD67032M-20 support up to 20 M-Bus devices;
- HD67032-B2-40 support up to 40 M-Bus devices;
- HD67032-B2-80 support up to 80 M-Bus devices;
- HD67032-B2-160 support up to 160 M-Bus devices;
- HD67032-B2-250 support up to 250 M-Bus devices.

 In the case of HD67032-B2-160 the device must be mounted on 35mm DIN rail which is horizontally mounted on a wall or cabinet back-plate. To avoid obstructions to the airflow around the unit it is recommended to not cover the paths of air. It is recommended to put the device into a ventilated cabinet.

 In the case of HD67032-B2-250 the device must be mounted on 35mm DIN rail which is horizontally mounted on a wall or cabinet back-plate. This unit have a fan in the top of the enclosure. To avoid obstructions to the airflow around the unit it is recommended to not cover the paths of air. Take care to not cover the fan. It is recommended to put the device into a ventilated cabinet.

CONFIGURATION:

You need Compositor SW67032 software on your PC in order to perform the following:

- Define the communication parameters of the M-Bus;
- Update Firmware

POWER SUPPLY:

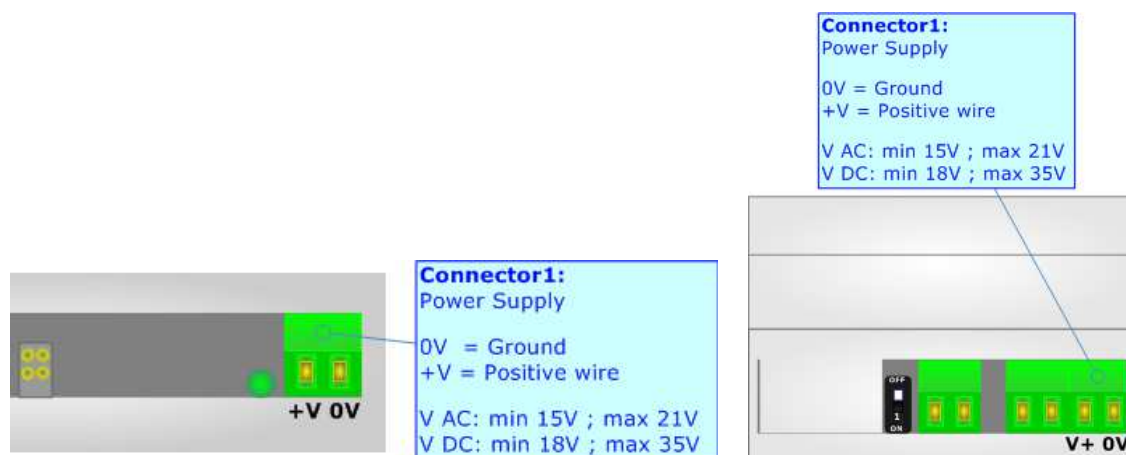
The devices can be powered at 15...21V AC and 18...35V DC. The consumption depends to the code of the device. For more details see the two tables below.

VAC		VDC	
Vmin	Vmax	Vmin	Vmax
15V	21V	18V	35V

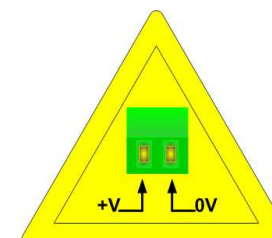
Consumption at 24V DC:

Device	No Load [W/VA]	Full Load [W/VA]*
HD67032M	3.5	4
HD67032-B2-40		5
HD67032-B2-80		8
HD67032-B2-160		14
HD67032-B2-250		30

* This value is with all the Slave M-Bus devices of the code (20, 40, 80, 160, 250) connected to the line



Caution: Do not reverse the polarity power



HD67032M-20
HD67032-B2-xxx

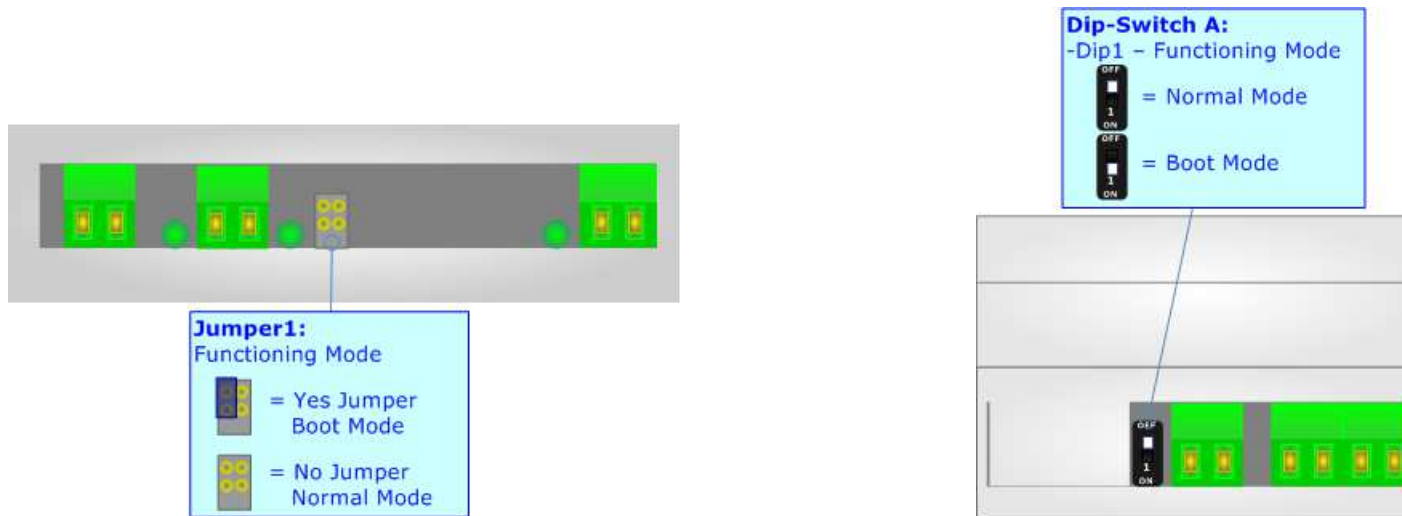
FUNCTION MODES:

The device has got two functions mode depending of the position of the 'Dip2 of Dip-Switch A' of HD67032-B2-xxx or 'Jumper1' of HD67032M-20:

- The first, with 'Dip1 of Dip-Switch A' at "OFF" position (for HD67032-B2-xxx series) or without any jumper inserted (for HD67032M-20), is used for the normal working of the device.
- The second, with 'Dip1 of Dip-Switch A' at "ON" position (for HD67032-B2-xxx series) or with the jumper inserted (for HD67032M-20), is used for upload the Project.

For the operations to follow for the updating, see 'UPDATE DEVICE' section.

According to the functioning mode, the LEDs will have specifics functions, see 'LEDS' section.

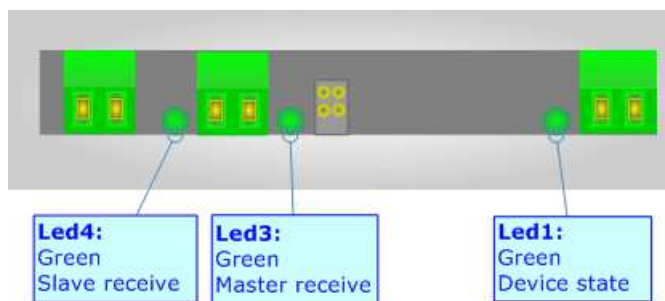


LEDS:

HD67032M-20:

The HD67032M-20 device has got three LEDs that are used to give information of the functioning status. The various meanings of the LEDs are described in the table below.

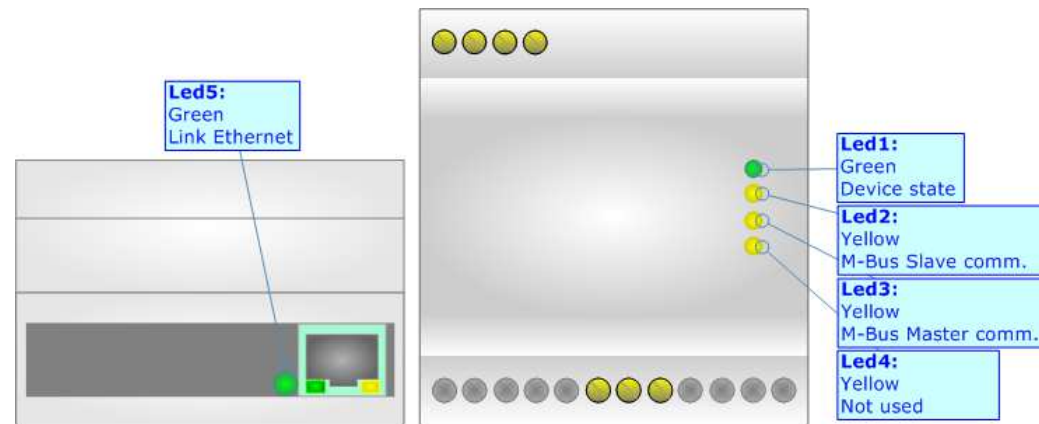
LED	Normal Mode	Boot Mode
1: Device state (green)	Blinks slowly (~1Hz)	Blinks quickly
3: Master receive (green)	Blinks when receive M-Bus data from Master port	OFF
4: Slave receive (green)	Blinks when receive M-Bus data from Slave port	OFF



HD67032-B2-xxx

The HD67032-B2-xxx device has got five LEDs that are used to give information of the functioning status. The various meanings of the LEDs are described in the table below.

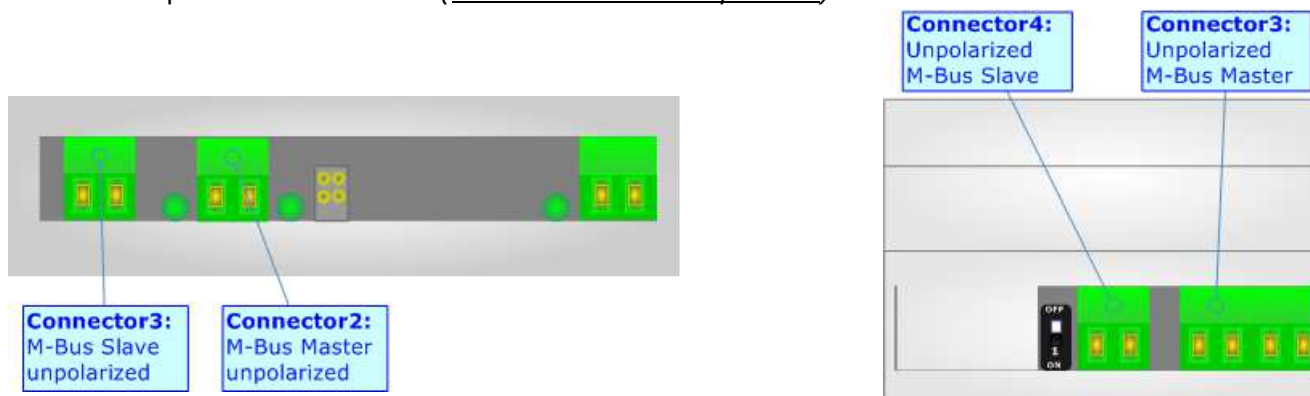
LED	Normal Mode	Boot Mode
1: Device State (green)	Blinks slowly (~1Hz)	Blinks quickly: Boot state Blinks very slowly (~0.5Hz): update in progress
2: M-Bus Slave communication (yellow)	Blinks when correct M-Bus request is received	Blinks quickly: Boot state Blinks very slowly (~0.5Hz): update in progress
3: M-Bus Master communication (yellow)	Blinks when correct M-Bus response is received	Blinks quickly: Boot state Blinks very slowly (~0.5Hz): update in progress
4: Not used (yellow)	OFF	Blinks quickly: Boot state Blinks very slowly (~0.5Hz): update in progress
5: Ethernet Link (green)	ON: Ethernet cable connected OFF: Ethernet cable disconnected	ON: Ethernet cable connected OFF: Ethernet cable disconnected



M-BUS:

The M-Bus is a unpolarized bus.

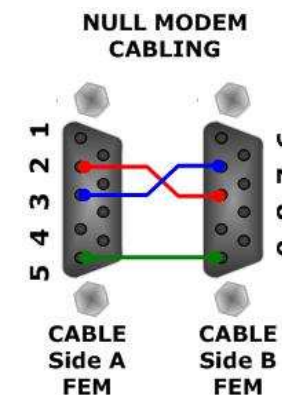
A two wire standard telephone cable (JYStY N*2*0.8 mm) is used as the transmission medium for the M-Bus. The maximum distance between a slave and the repeater is 350m; this length corresponds to a cable resistance of up 29Ω. This distance applies for the standard configuration having Baud rates between 300 and 9600 Baud, and a maximum of 250 slaves. The maximum distance can be increased by limiting the Baud rate and using fewer slaves, but the bus voltage in the space state must at no point in a segment fall below 12V, because of the remote powering of the slaves. In the standard configuration the total cable length should not exceed 1000m, in order to meet the requirement of a maximum cable capacitance of 180nF. *(Taken from M-Bus specifics)*



RS232 (for HD67032M):

The connection from RS232 socket to a serial port (example one from a personal computer), must be made with a Null Modem cable (a serial cable where the pins 2 and 3 are crossed). It is recommended that the RS232C Cable not exceed 15 meters.

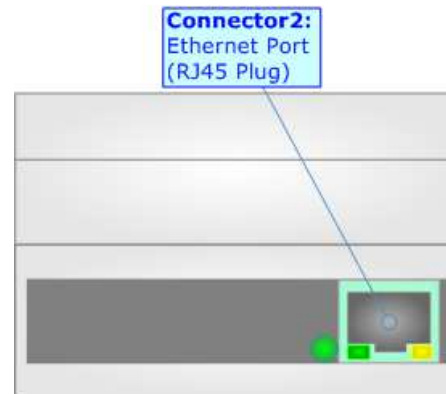
The serial port is used for programming the device.



ETHERNET (for HD67032-B2-xxx):

The Ethernet port is used for programming the device.


The Ethernet connection must be made using Connector2 of HD67032-B2-xxx with at least a Category 5E cable. The maximum length of the cable should not exceed 100m. The cable has to conform to the T568 norms relative to connections in cat.5 up to 100 Mbps. To connect the device to an Hub/Switch is recommended the use of a straight cable, to connect the device to a PC/PLC/other is recommended the use of a cross cable.



USE OF COMPOSITOR SW67032:

To configure the Converter, use the available software that runs with Windows called SW67032. It is downloadable from the site www.adfweb.com and its operation is described in this document (*this manual is referenced to the last version of the software present on our web site*). The software works with MSWindows (XP, Vista, Seven, 8; 10; 32/64bit).

When launching the SW67032, the window below appears (Fig. 2).

 **Note:**
It is necessary to have installed .Net Framework 4.

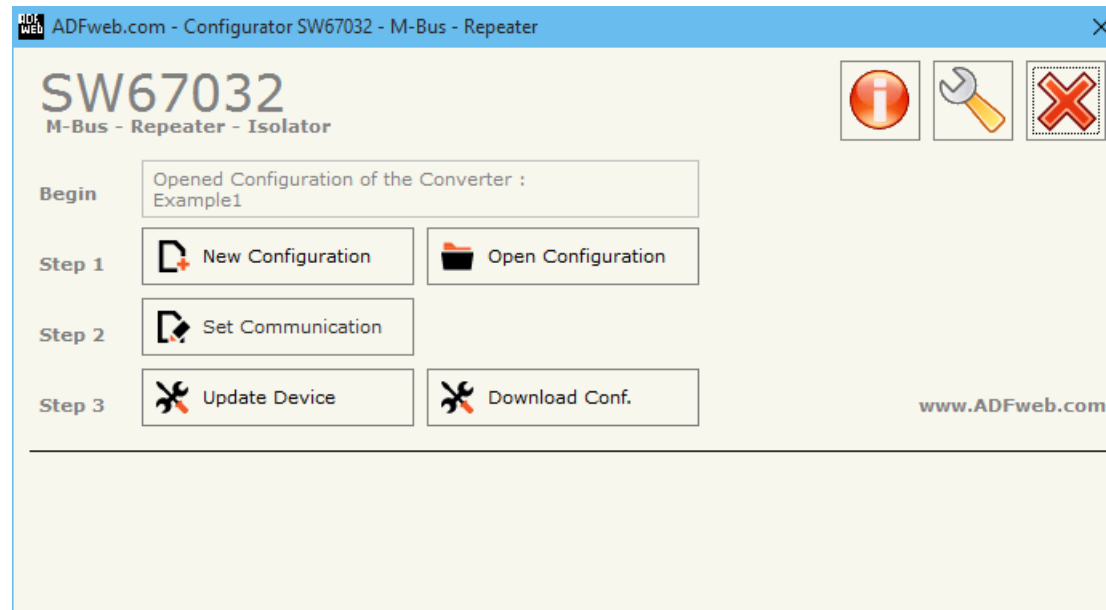
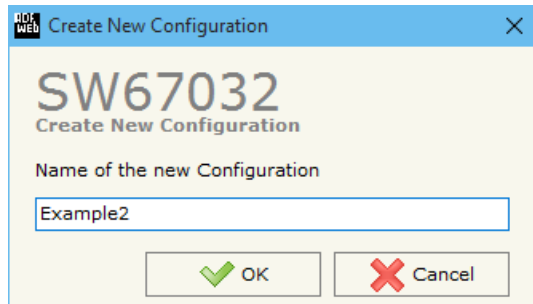


Figure 2: Main window for SW67032

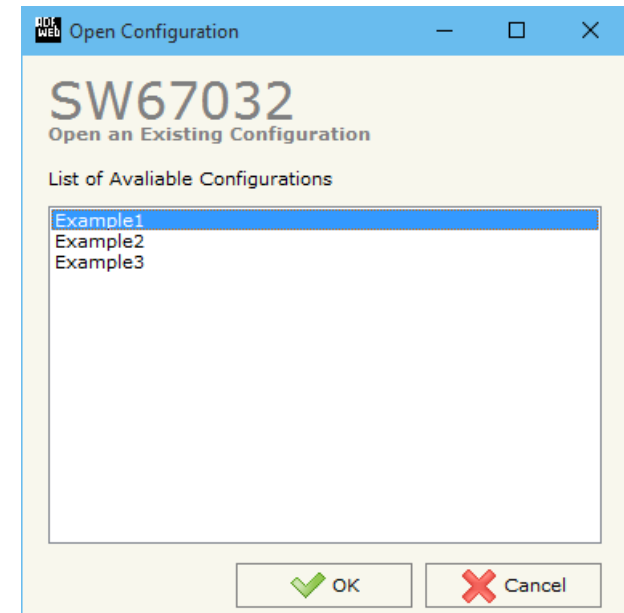
NEW CONFIGURATION / OPEN CONFIGURATION:

The “**New Configuration**” button creates the folder which contains the entire device’s configuration.




A device’s configuration can also be imported or exported:

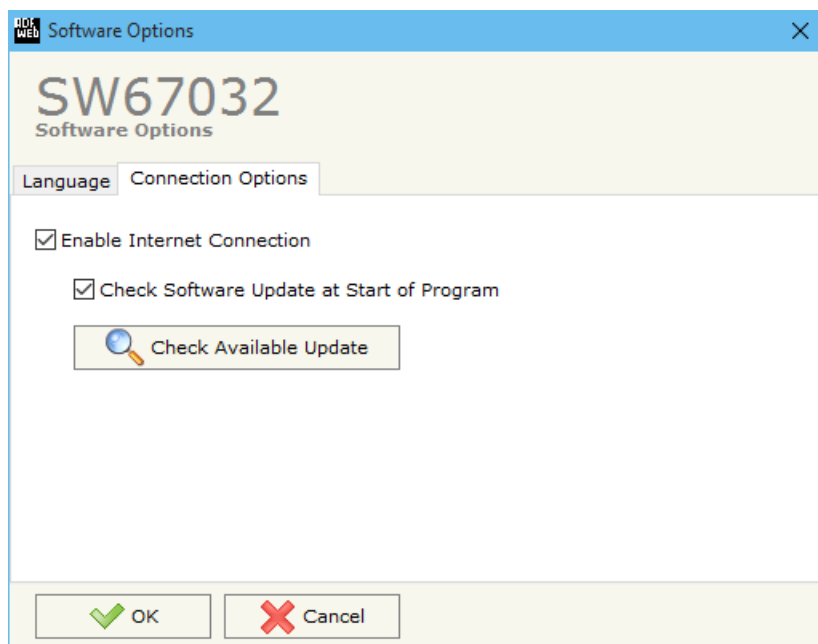
- To clone the configurations of a Programmable “M-Bus – Repeater - Isolator” in order to configure another device in the same manner, it is necessary to maintain the folder and all its contents;
- To clone a project in order to obtain a different version of the project, it is sufficient to duplicate the project folder with another name and open the new folder with the button “**Open Configuration**”.



SOFTWARE OPTIONS:

By pressing the “**Settings**” () button there is the possibility to change the language of the software and check the updatings for the compositor.

In the section “Language” it is possible to change the language of the software.



In the section “Connection Options”, it is possible to check if there are some updatings of the software compositor in ADFweb.com website. Checking the option “**Check Software Update at Start of Program**”, the SW67032 check automatically if there are updatings when it is launched.

SET COMMUNICATION:

This section define the fundamental communication parameters of the M-Bus buses.

By Pressing the **"Set Communication"** button from the main window for SW67032 (Fig. 2) the window "Set Communication" appears (Fig. 3). The window is divided in two sections.

In the section "Hardware Type" it is possible to define the hardware used:

- HD67032M;
- HD67032M-40/80/160/250;
- HD67032-B2.

The means of the fields for "M-Bus" are:

- In the field **"Baudrate"** it is possible to select the baud rate of the M-Bus lines;
- In the field **"Parity"** it is possible to select the parity of the lines.

The means of the fields for the "Ethernet" section are (only for HD67032-B2):

- In the fields **"IP ADDRESS"** insert the IP address that you want to give to the Converter;
- In the fields **"SUBNET Mask"** insert the SubNet Mask;
- In the fields **"GATEWAY"** insert the default gateway that you want to use. This feature can be enabled or disabled pressing the Check Box field. This feature is used for going out of the net.

These informations are used for programming the Converter.

The screenshot shows a software window titled "Set Communication" for device "SW67032". The window is organized into three main sections, each with a close button (X) in the top right corner:

- Hardware Type:** A dropdown menu is set to "HD67032-B2".
- M-Bus:** Contains two dropdown menus: "Baudrate" is set to "2400" and "Parity" is set to "EVEN".
- Ethernet:** Contains several input fields:
 - IP ADDRESS:** Four fields containing "192", "168", "0", and "5".
 - SUBNET Mask:** Four fields containing "255", "255", "255", and "0".
 - GATEWAY:** A checkbox labeled "GATEWAY" is checked, followed by four input fields containing "192", "168", "0", and "1".

At the bottom of the window, there are two buttons: "OK" (with a green checkmark icon) and "Cancel" (with a red X icon).

Figure 3: "Set Communication" window

UPDATE DEVICE (for HD67032M-20):

By pressing the **Update Device** button it is possible to load the created Configuration into the device, and also the Firmware if is necessary, using the RS232 port.

In order to load the parameters or update the firmware in the device, follow these instructions:

- Turn OFF the Device;
- Connect the RS232 cable from your PC to the Converter;
- Insert Jumper1;
- Select the **COM port** and press the **Connect** button;
- Turn on the device;
- Check the "Device state" Led. It must blink quickly (see "LEDS" section);
- Press the **Next** button;
- Select which operations you want to do.
- Press the **Execute update firmware** button to start the upload;
- When all the operations are "OK" turn off the device;
- Remove Jumper1;
- Disconnect the RS232 cable;
- Turn ON the device.

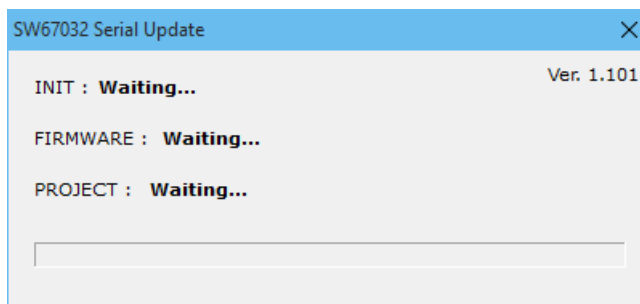
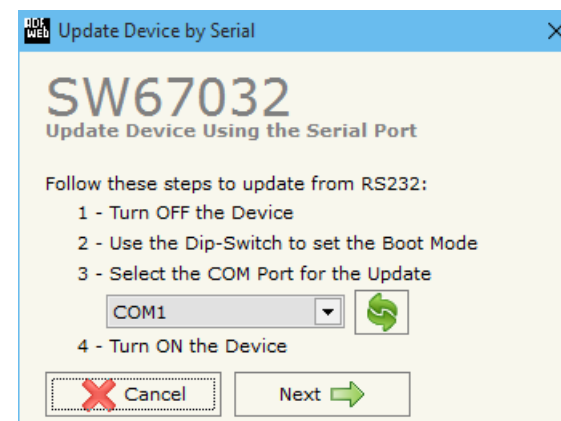


Figure 4: "Update via Serial" windows

UPDATE DEVICE (for HD67032-B2-xxx):

By pressing the “**Update Device**” button, it is possible to load the created Configuration into the device; and also the Firmware, if necessary.

If you don’t know the actual IP address of the device you have to use this procedure:

- Turn off the Device;
- Put Dip1 of ‘Dip-Switch A’ in ON position;
- Turn on the device
- Connect the Ethernet cable;
- Insert the IP “**192.168.2.205**”;
- Press the “**Ping**” button, “Device Found! must appear”;
- Press the “**Next**” button;
- Select which operations you want to do;
- Press the “**Execute update firmware**” button to start the upload;
- When all the operations are “OK” turn off the Device;
- Put Dip1 of ‘Dip-Switch A’ in OFF position;
- Turn on the device.

At this point the configuration/firmware on the device is correctly updated.

If you know the actual IP address of the device, you have to use this procedure:

- Turn on the Device with the Ethernet cable inserted;
- Insert the actual IP of the Converter;
- Press the “**Ping**” button, must appear “Device Found!”;
- Press the “**Next**” button;
- Select which operations you want to do;
- Press the “**Execute update firmware**” button to start the upload;
- When all the operations are “OK” the device automatically goes at Normal Mode.

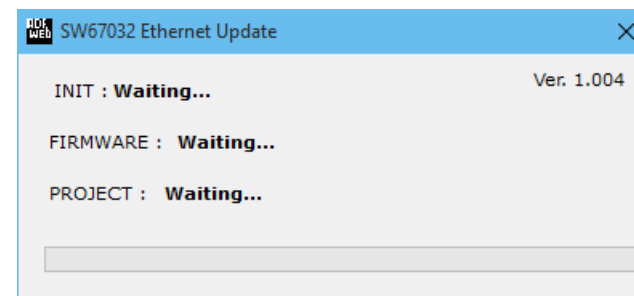
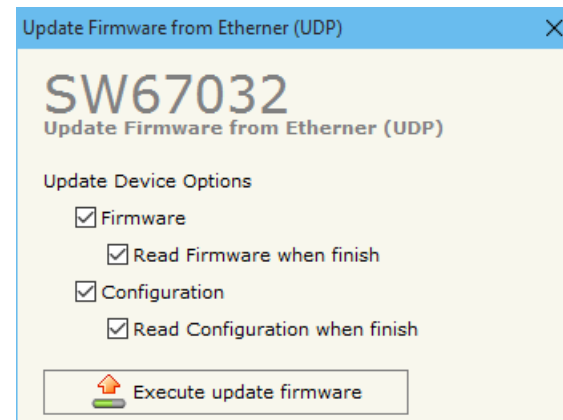
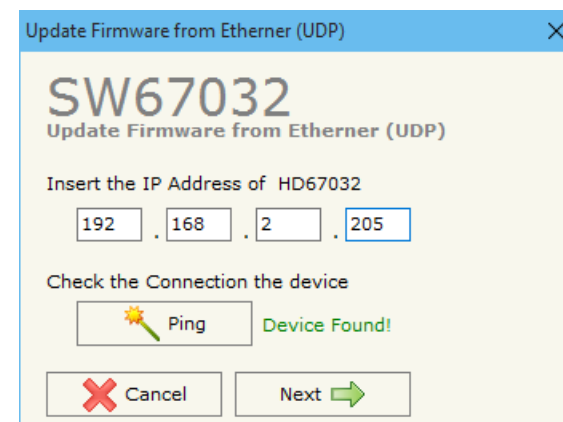


Figure 5: “Update via UDP” windows



Note:

When you install a new version of the software, if it is the first time it is better you do the update of the Firmware in the HD67032 device.



Note:

When you receive the device, for the first time, you also have to update the Firmware in the HD67032 device.



Warning:

If Fig. 6 appears when you try to do the Update try these points before seeking assistance:

- Check if the serial COM port selected is the correct one;
- Check if the serial cable is connected between the PC and the device;
- Try to repeat the operations for the updating;
- If you are using a USB↔RS232 converter try with a native COM port or change the converter;
- Try to repeat the operations for the updating;
- Try with another PC;
- Try to restart the PC;
- Check the LAN settings;
- If you are using the program inside a Virtual Machine, try to use in the main Operating System;
- If you are using Windows Seven, Vista, 8 and 10 make sure that you have the administrator privileges;
- In case you have to program more than one device, using the "UDP Update", you have to cancel the ARP table every time you connect a new device on Ethernet. For do this you have to launch the "Command Prompt" and write the command "arp -d". Pay attention that with Windows Vista, Seven, 8 you have to launch the "Command Prompt" with Administrator Rights;
- Pay attention at Firewall lock.

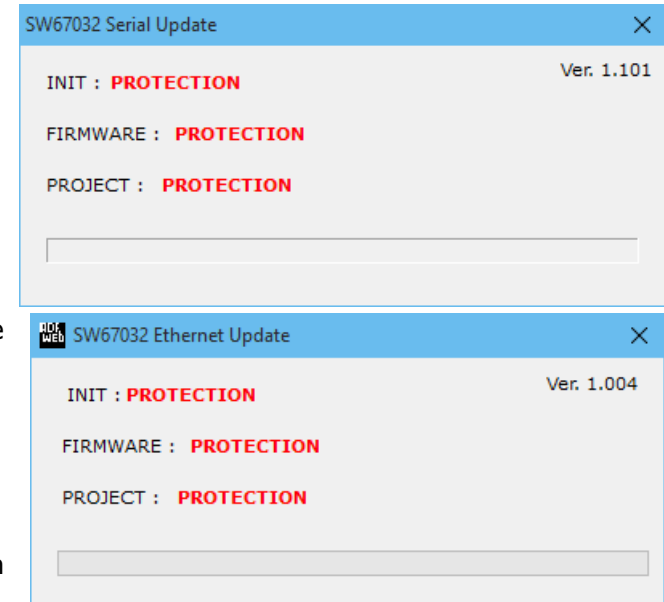


Figure 6: "Protection" window

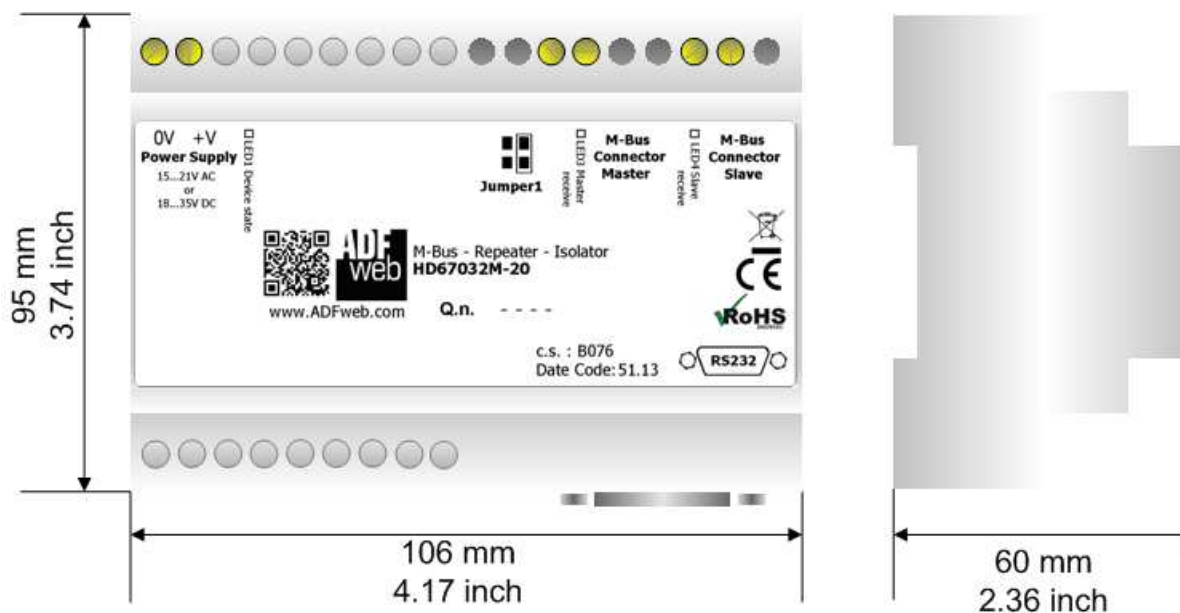
In the case of HD67032 you have to use the software "SW67032": www.adfweb.com/download/filefold/SW67032.zip.

DOWNLOAD CONF.:

By pressing the “**Download Conf.**” button, it is possible to download the Configuration that is inside the device into the opened project. After having set the type of hardware used, it is possible to download it by serial (HD67032M-20 or HD67032M-40/80/160/250) or by Ethernet (HD67032-B2).

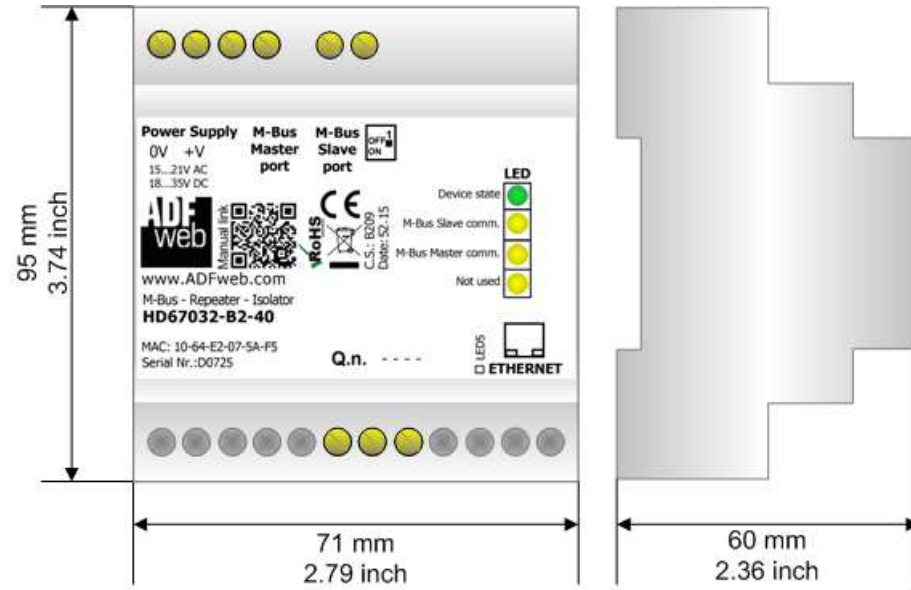
The procedures for the downloading is the same of the ones for the updating.

MECHANICAL DIMENSIONS:



Housing: PVC
Weight: 200g (Approx)

Figure 7a: Mechanical dimensions for HD67032M-20



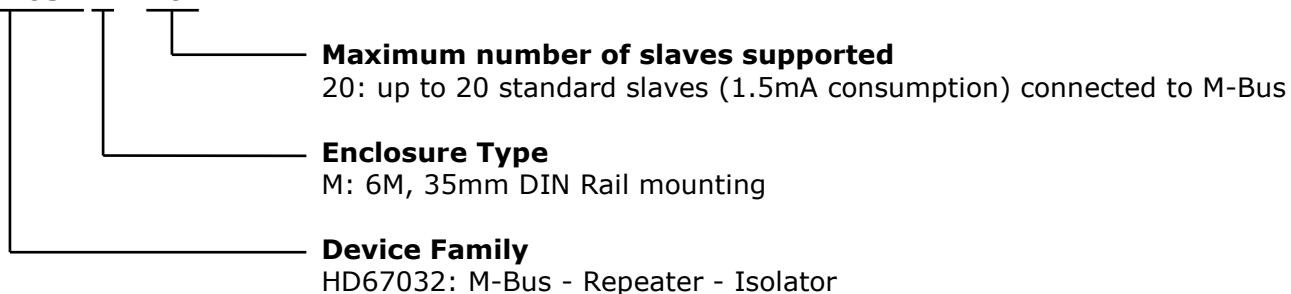
Housing: PVC
Weight: 200g (Approx)

Figure 7b: Mechanical dimensions for HD67032-B2-xxx

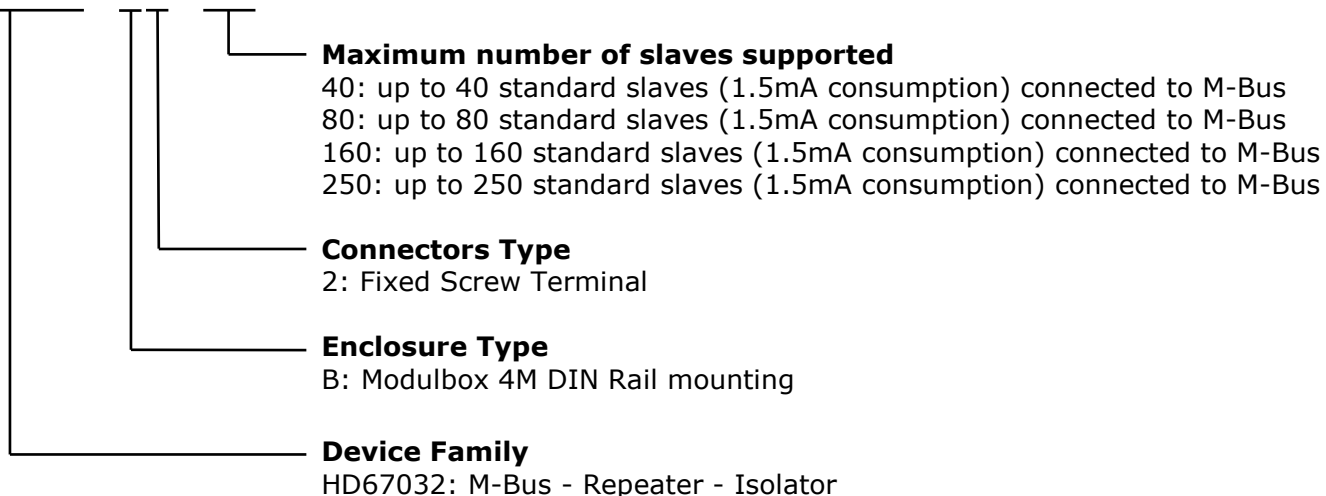
ORDERING INFORMATIONS:

The ordering part number is formed by a valid combination of the following:

HD67032 M - 20



HD67032 - B 2 - xxx



- Order Code: **HD67032M-20** - M-Bus - Repeater - Isolator (up to 20 slaves connected to M-Bus)
- Order Code: **HD67032-B2-40** - M-Bus - Repeater - Isolator (up to 40 slaves connected to M-Bus)
- Order Code: **HD67032-B2-80** - M-Bus - Repeater - Isolator (up to 80 slaves connected to M-Bus)
- Order Code: **HD67032-B2-160** - M-Bus - Repeater - Isolator (up to 160 slaves connected to M-Bus)
- Order Code: **HD67032-B2-250** - M-Bus - Repeater - Isolator (up to 250 slaves connected to M-Bus)

ACCESSORIES:

- Order Code: **APW020** - Power Supply for M-Bus Master device that supports up to 20 Slaves
- Order Code: **APW040** - Power Supply for M-Bus Master device that supports up to 40 Slaves
- Order Code: **APW080** - Power Supply for M-Bus Master device that supports up to 80 Slaves
- Order Code: **APW160** - Power Supply for M-Bus Master device that supports up to 160 Slaves
- Order Code: **APW250** - Power Supply for M-Bus Master device that supports up to 250 Slaves

DISCLAIMER:

All technical content within this document can be modified without notice. The content of the document is a under continual renewal. For losses due to fire, earthquake, third party access or other accidents, or intentional or accidental abuse, misuse, or use under abnormal conditions repairs are charged to the user. ADFweb.com S.r.l. will not be liable for accidental loss of use or inability to use this product, such as loss of business income. ADFweb.com S.r.l. shall not be liable for consequences of improper use.

OTHER REGULATIONS AND STANDARDS:**WEEE INFORMATION**

Disposal of old electrical and electronic equipment (as in the European Union and other European countries with separate collection systems).

— This symbol on the product or on its packaging indicates that this product may not be treated as household rubbish. Instead, it should be taken to an applicable collection point for the recycling of electrical and electronic equipment. If the product is disposed correctly, you will help prevent potential negative environmental factors and impact of human health, which could otherwise be caused by inappropriate disposal. The recycling of materials will help to conserve natural resources. For more information about recycling this product, please contact your local city office, your household waste disposal service or the shop where you purchased the product.

RESTRICTION OF HAZARDOUS SUBSTANCES DIRECTIVE

The device respects the 2002/95/EC Directive on the restriction of the use of certain hazardous substances in electrical and electronic equipment (commonly referred to as Restriction of Hazardous Substances Directive or RoHS).

CE MARKING

The product conforms with the essential requirements of the applicable EC directives.

WARRANTIES AND TECHNICAL SUPPORT:

For fast and easy technical support for your ADFweb.com SRL products, consult our internet support at www.adfweb.com. Otherwise contact us at the address support@adfweb.com

RETURN POLICY:

If while using your product you have any problem and you wish to exchange or repair it, please do the following:

- Obtain a Product Return Number (PRN) from our internet support at www.adfweb.com. Together with the request, you need to provide detailed information about the problem.
- Send the product to the address provided with the PRN, having prepaid the shipping costs (shipment costs billed to us will not be accepted).

If the product is within the warranty of twelve months, it will be repaired or exchanged and returned within three weeks. If the product is no longer under warranty, you will receive a repair estimate.



ADFweb.com S.r.l.
Via Strada Nuova, 17
IT-31010 Mareno di Piave
TREVISO (Italy)
Phone +39.0438.30.91.31
Fax +39.0438.49.20.99
www.adfweb.com

