

# User Manual

Revision 1.100  
English

## M-Bus / M-Bus Wireless / BACnet Slave - Converter

(Order Code: HD67086-IP-B2-xxxMHz-0, HD67086-IP-B2-xxxMHz-20, HD67086-IP-B2-xxxMHz-40, HD67086-IP-B2-xxxMHz-80, HD67086-IP-B2-xxxMHz-160, HD67086-IP-B2-xxxMHz-250)

(Order Code: HD67086-MSTP-B2-xxxMHz-0, HD67086-MSTP-B2-xxxMHz-20, HD67086-MSTP-B2-xxxMHz-40, HD67086-MSTP-B2-xxxMHz-80, HD67086-MSTP-B2-xxxMHz-160, HD67086-MSTP-B2-xxxMHz-250)

For Website information:

[www.adfweb.com?Product=HD67086](http://www.adfweb.com?Product=HD67086)

For Price information:

[www.adfweb.com?Price=HD67086-IP-B2-xxxMHz-0](http://www.adfweb.com?Price=HD67086-IP-B2-xxxMHz-0)  
[www.adfweb.com?Price=HD67086-IP-B2-xxxMHz-20](http://www.adfweb.com?Price=HD67086-IP-B2-xxxMHz-20)  
[www.adfweb.com?Price=HD67086-IP-B2-xxxMHz-40](http://www.adfweb.com?Price=HD67086-IP-B2-xxxMHz-40)  
[www.adfweb.com?Price=HD67086-IP-B2-xxxMHz-80](http://www.adfweb.com?Price=HD67086-IP-B2-xxxMHz-80)  
[www.adfweb.com?Price=HD67086-IP-B2-xxxMHz-160](http://www.adfweb.com?Price=HD67086-IP-B2-xxxMHz-160)  
[www.adfweb.com?Price=HD67086-IP-B2-xxxMHz-250](http://www.adfweb.com?Price=HD67086-IP-B2-xxxMHz-250)  
[www.adfweb.com?Price=HD67086-MSTP-B2-xxxMHz-0](http://www.adfweb.com?Price=HD67086-MSTP-B2-xxxMHz-0)  
[www.adfweb.com?Price=HD67086-MSTP-B2-xxxMHz-20](http://www.adfweb.com?Price=HD67086-MSTP-B2-xxxMHz-20)  
[www.adfweb.com?Price=HD67086-MSTP-B2-xxxMHz-40](http://www.adfweb.com?Price=HD67086-MSTP-B2-xxxMHz-40)  
[www.adfweb.com?Price=HD67086-MSTP-B2-xxxMHz-80](http://www.adfweb.com?Price=HD67086-MSTP-B2-xxxMHz-80)  
[www.adfweb.com?Price=HD67086-MSTP-B2-xxxMHz-160](http://www.adfweb.com?Price=HD67086-MSTP-B2-xxxMHz-160)  
[www.adfweb.com?Price=HD67086-MSTP-B2-xxxMHz-250](http://www.adfweb.com?Price=HD67086-MSTP-B2-xxxMHz-250)

### Benefits and Main Features:

- ⊕ Very easy to configure
- ⊕ Triple electrical isolation
- ⊕ Temperature range: -40°C/85°C (-40°F/185°F)



User Manual

For others M-Bus products see also the following link:

#### Converter M-Bus Wireless to

[www.adfweb.com?Product=HD67082](http://www.adfweb.com?Product=HD67082)  
[www.adfweb.com?Product=HD67084](http://www.adfweb.com?Product=HD67084)

**(Modbus Slave)**  
**(Ethernet)**

#### Converter M-Bus to

[www.adfweb.com?Product=HD67021](http://www.adfweb.com?Product=HD67021)  
[www.adfweb.com?Product=HD67022](http://www.adfweb.com?Product=HD67022)

**(RS232)**  
**(RS485)**

#### Analyzer / Scanner / Sniffer M-Bus

[www.adfweb.com?Product=HD67031](http://www.adfweb.com?Product=HD67031)

#### Isolator/ Repeater M-Bus

[www.adfweb.com?Product=HD67032M](http://www.adfweb.com?Product=HD67032M)

#### Gateway M-Bus / Modbus RTU

[www.adfweb.com?Product=HD67029M-232](http://www.adfweb.com?Product=HD67029M-232)  
[www.adfweb.com?Product=HD67029M-485](http://www.adfweb.com?Product=HD67029M-485)

**(on RS232)**  
**(on RS485)**

#### Gateway M-Bus / Modbus TCP

[www.adfweb.com?Product=HD67044](http://www.adfweb.com?Product=HD67044)

#### Gateway M-Bus / PROFIBUS

[www.adfweb.com?Product=HD67053M](http://www.adfweb.com?Product=HD67053M)

#### Gateway M-Bus Concentrator

[www.adfweb.com?Product=HD67054M](http://www.adfweb.com?Product=HD67054M)

#### Gateway M-Bus Slave / Modbus RTU master

[www.adfweb.com?Product=HD67059M-232](http://www.adfweb.com?Product=HD67059M-232)

Do you have an your customer protocol?  
[www.adfweb.com?Product=HD67003](http://www.adfweb.com?Product=HD67003)

Do you need to choose a device? do you want help?  
[www.adfweb.com?Cmd=helpme](http://www.adfweb.com?Cmd=helpme)

**INDEX:**

	Page
INDEX	2
UPDATED DOCUMENTATION	2
REVISION LIST	2
WARNING	2
TRADEMARKS	2
SECURITY ALERT	3
EXAMPLE OF CONNECTION	4
CONNECTION SCHEME	5
CHARACTERISTICS	9
CONFIGURATION	9
POWER SUPPLY	10
FUNCTION MODES	11
LEDS	12
ETHERNET	13
RS485	14
WM-BUS	15
M-BUS	15
USE OF COMPOSITOR SW67086	16
NEW CONFIGURATION / OPEN CONFIGURATION	17
SOFTWARE OPTIONS	18
SET COMMUNICATION	20
M-BUS	22
BACNET EDE FILE	35
UPDATE DEVICE	36
SCAN & DECODE FUNCTION	38
MECHANICAL DIMENSIONS	39
ORDERING INFORMATIONS	40
ACCESSORIES	41
DISCLAIMER	42
OTHER REGULATIONS AND STANDARDS	42
WARRANTIES AND TECHNICAL SUPPORT	43
RETURN POLICY	43

**UPDATED DOCUMENTATION:**

Dear customer, we thank you for your attention and we remind you that you need to check that the following document is:

- Updated
- Related to the product you own

To obtain the most recently updated document, note the “document code” that appears at the top right-hand corner of each page of this document.

With this “Document Code” go to web page [www.adfweb.com/download/](http://www.adfweb.com/download/) and search for the corresponding code on the page. Click on the proper “Document Code” and download the updates.

**REVISION LIST:**

Revision	Date	Author	Chapter	Description
1.000	02/06/2016	Ff	All	First Release
1.100	19/01/2018	Ff	All	New hardware version

**WARNING:**

ADFweb.com reserves the right to change information in this manual about our product without warning.  
ADFweb.com is not responsible for any error this manual may contain.

**TRADEMARKS:**

All trademarks mentioned in this document belong to their respective owners.

**SECURITY ALERT:****GENERAL INFORMATION**

To ensure safe operation, the device must be operated according to the instructions in the manual. When using the device, legal and safety regulation are required for each individual application. The same applies also when using accessories.

**INTENDED USE**

Machines and systems must be designed so the faulty conditions do not lead to a dangerous situation for the operator (i.e. independent limit switches, mechanical interlocks, etc.).

**QUALIFIED PERSONNEL**

The device can be used only by qualified personnel, strictly in accordance with the specifications.

Qualified personnel are persons who are familiar with the installation, assembly, commissioning and operation of this equipment and who have appropriate qualifications for their job.

**RESIDUAL RISKS**

The device is state-of-the-art and is safe. The instruments can represent a potential hazard if they are inappropriately installed and operated by untrained personnel. These instructions refer to residual risks with the following symbol:

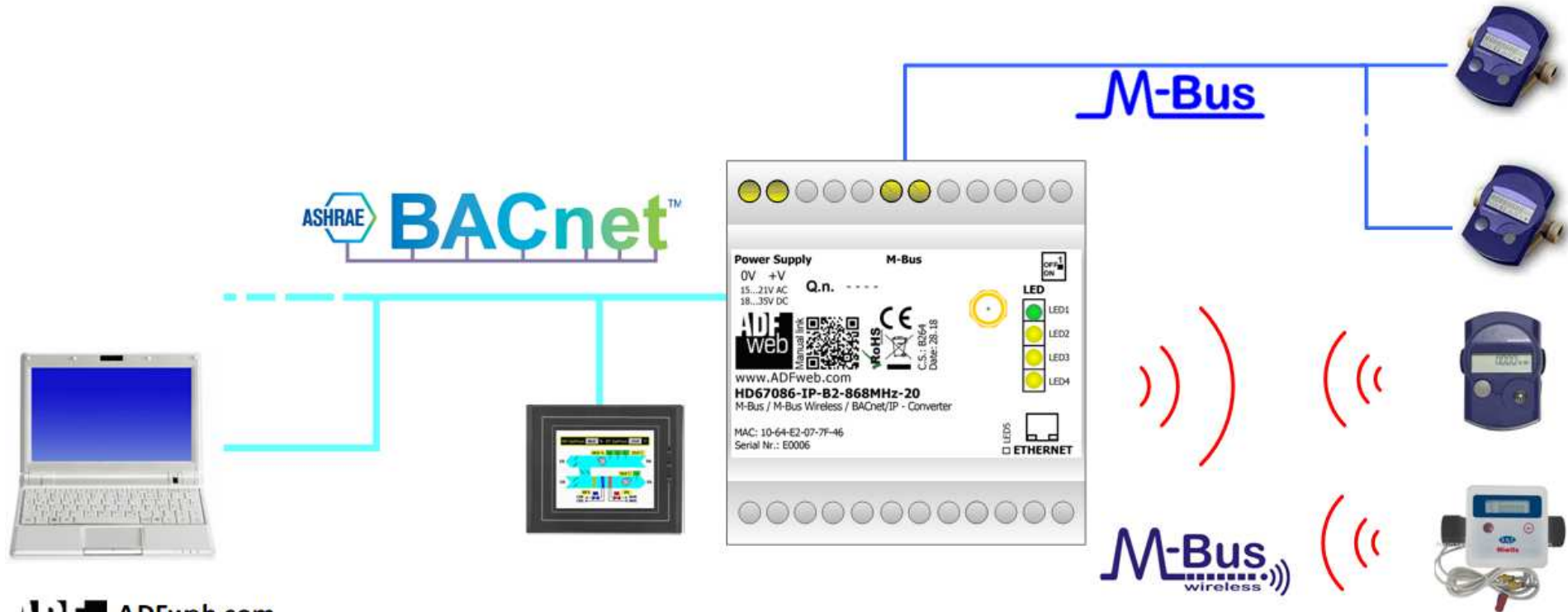


This symbol indicates that non-observance of the safety instructions is a danger for people that could lead to serious injury or death and / or the possibility of damage.

**CE CONFORMITY**

The declaration is made by our company. You can send an email to [support@adfweb.com](mailto:support@adfweb.com) or give us a call if you need it.

**EXAMPLE OF CONNECTION:**



**ADFweb.com**  
 tel. +39 - 0438.30.91.31  
[www.adfweb.com](http://www.adfweb.com)  
[info@adfweb.com](mailto:info@adfweb.com)

**CONNECTION SCHEME:**

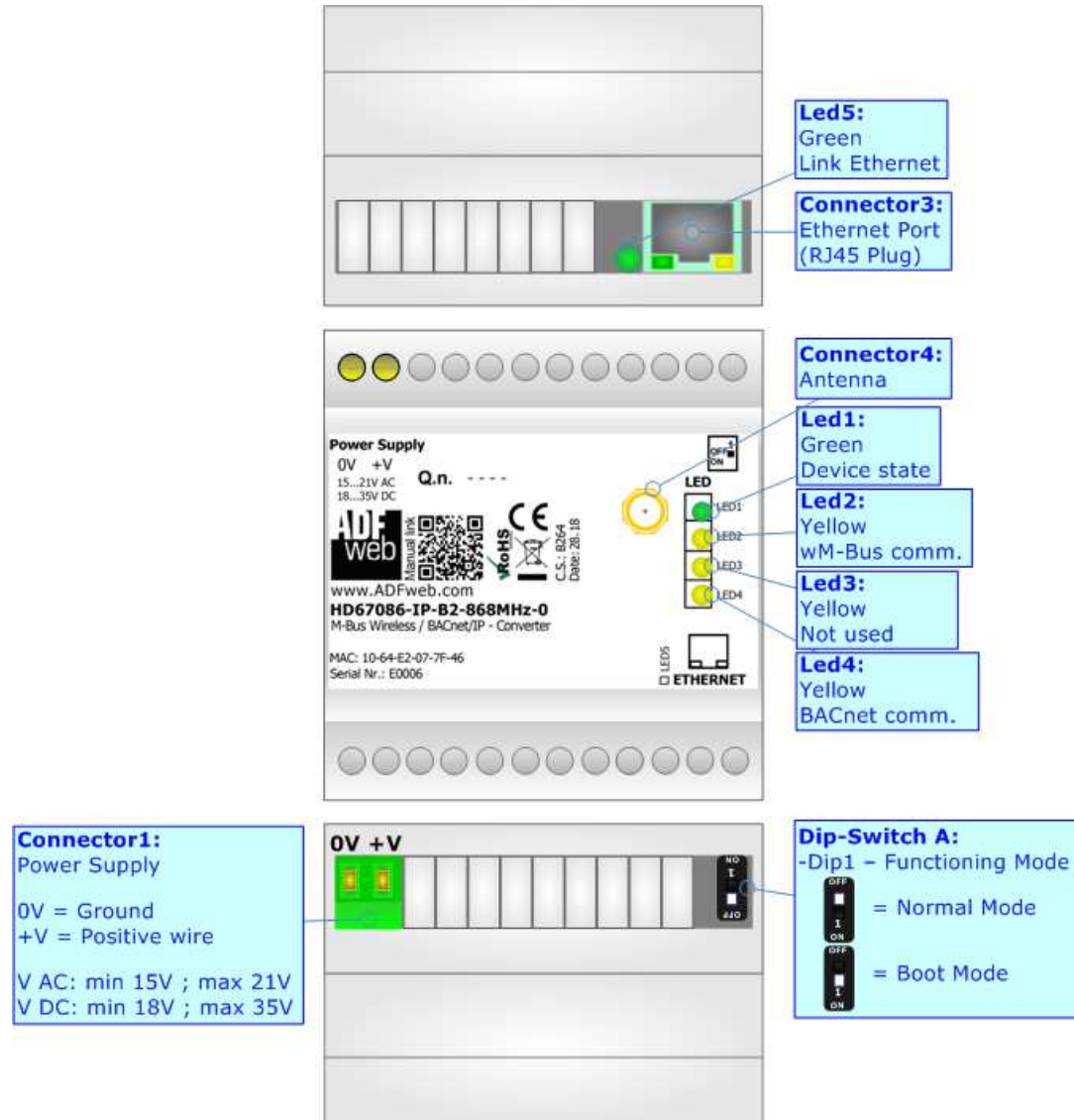


Figure 1a: Connection scheme for HD67086-IP-B2-xxxMHz-0

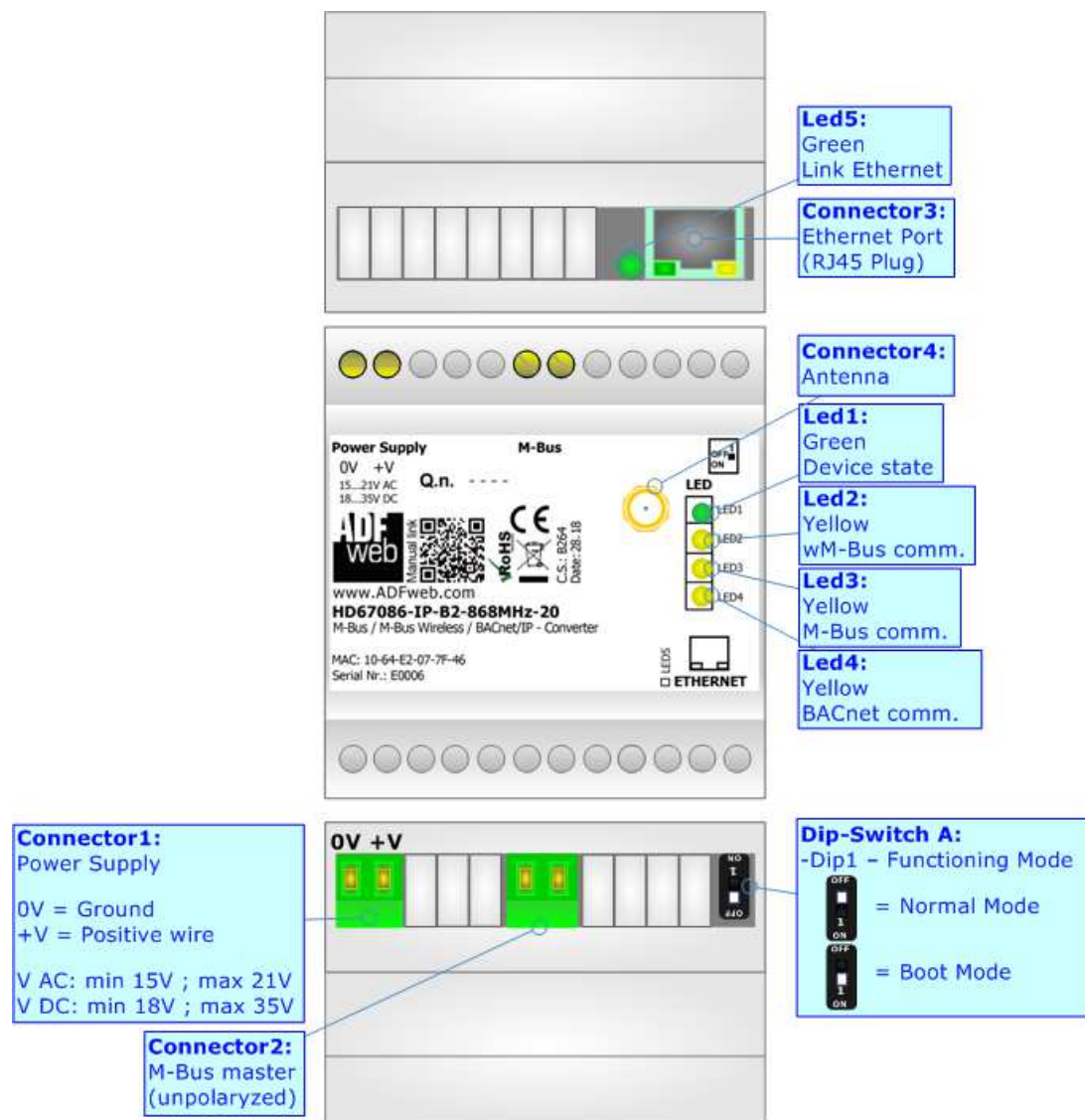


Figure 1b: Connection scheme for HD67086-IP-B2-xxxMHz-xxx

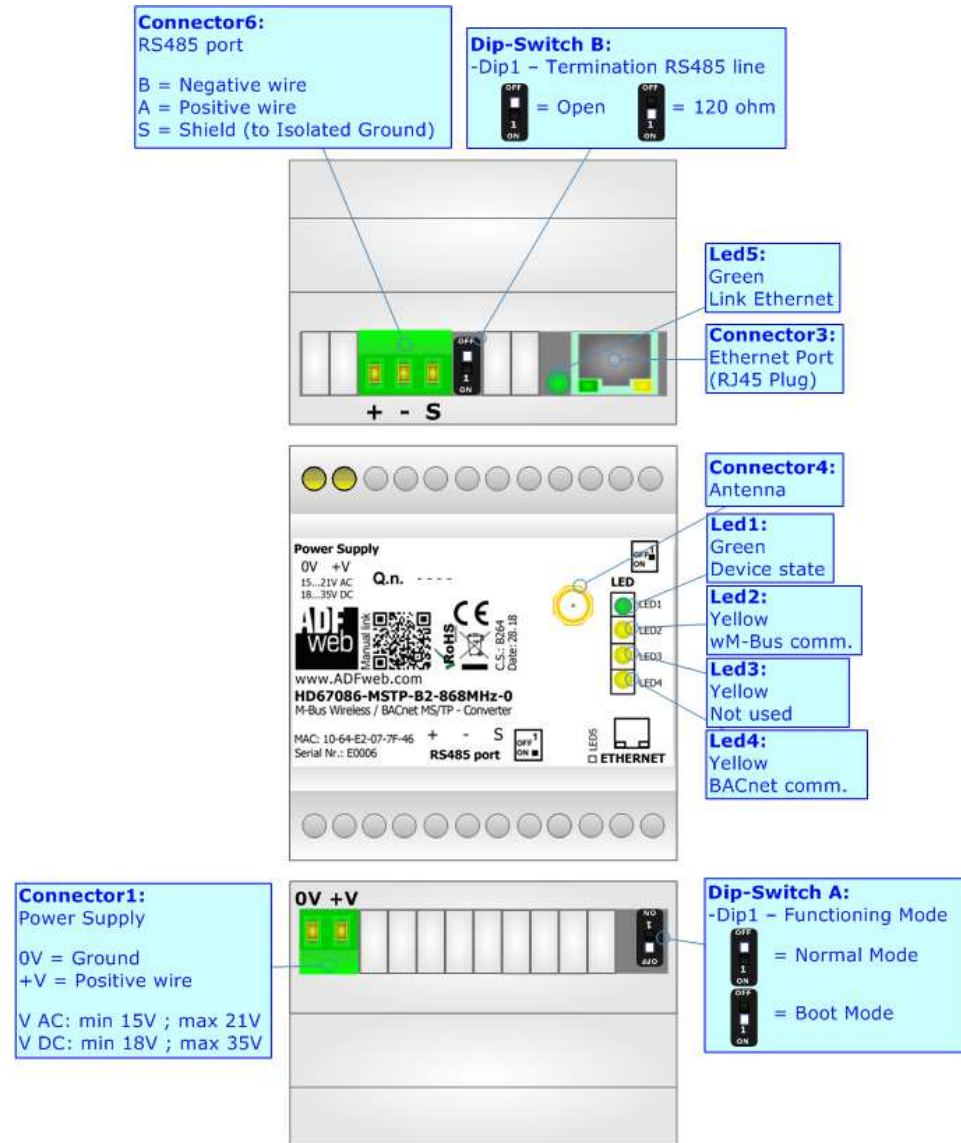


Figure 1c: Connection scheme for HD67086-MSTP-B2-xxxMHz-0

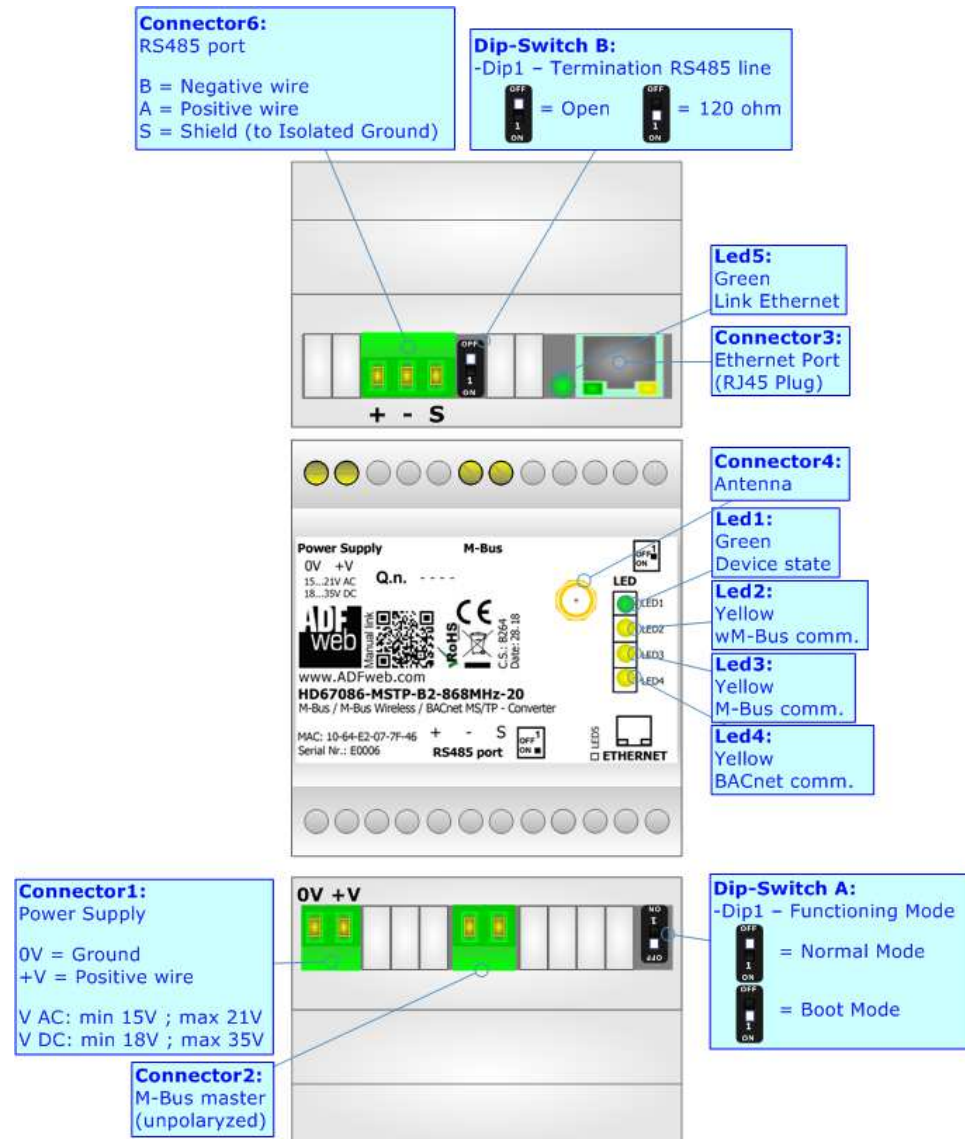


Figure 1d: Connection scheme for HD67086-MSTP-B2-xxxMHz-xxx



**CHARACTERISTICS:**

The HD67086 are converters from M-Bus Wireless and M-Bus to BACnet Slave.

They allow the following characteristics:

- Electrical isolation between Ethernet and M-Bus;
- Baud Rate and Parity (for M-Bus on wire) changeable with software;
- Available wM-Bus frequency: 169 MHz or 433 MHz or 868 MHz (in relation to the order code);
- Mountable on 35mm Rail DIN;
- Wide power supply input range: 15...21V AC or 18...35V DC;
- Wide temperature range: -40°C / 85°C [-40°F / +185°F].

**CONFIGURATION:**

You need Compositor SW67086 software on your PC in order to perform the following:

- Define the parameter of BACnet;
- Define the parameter of M-Bus line;
- Define the parameter of wM-Bus line;
- Define which M-Bus variables are readable on BACnet;
- Update the device.

**POWER SUPPLY:**

The devices can be powered at 15...21V AC and 18...35V DC. The consumption depends to the code of the device. For more details see the two tables below.

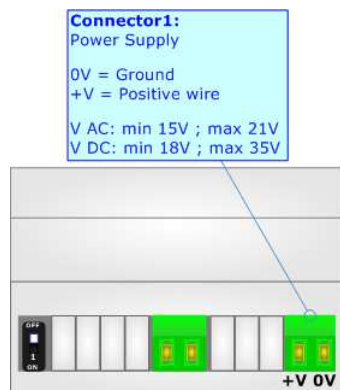
VAC		VDC	
Vmin	Vmax	Vmin	Vmax
15V	21V	18V	35V

Consumption at 24V DC:

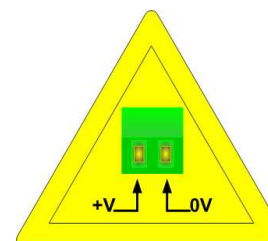
Device	[W/VA]
HD67086-xxx-B2-xxxMHz-0	3.5

Device	No Load [W/VA]	Full Load [W/VA]*
HD67086-xxx-B2-xxxMHz-20	3.5	4
HD67086-xxx-B2-xxxMHz-40		5
HD67086-xxx-B2-xxxMHz-80		8
HD67086-xxx-B2-xxxMHz-160		14
HD67086-xxx-B2-xxxMHz-250		30

\* This value is with all the Slave M-Bus devices of the code (20, 40, 80, 160, 250) connected to the line (wired side)



**Caution: Not reverse the polarity power**



HD67086-xxx-B2-xxxMHz-0  
HD67086-xxx-B2-xxxMHz-xxx

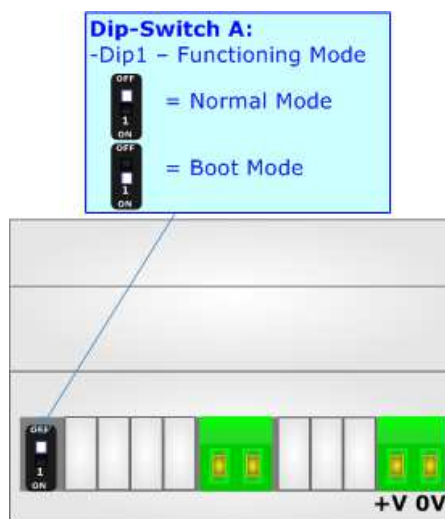
**FUNCTION MODES:**

The device has got two functions mode depending of the position of the 'Dip1 of Dip-Switch A':

- The first, with 'Dip1 of Dip-Switch A' at "OFF" position, is used for the normal working of the device;
- The second, with 'Dip1 of Dip-Switch A' at "ON" position, is used for uploading the Project and/or Firmware.

For the operations to follow for the updating, see 'UPDATE DEVICE' section.

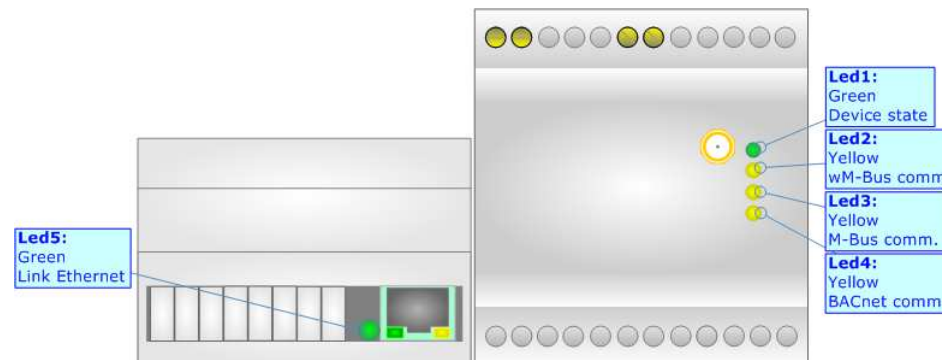
According to the functioning mode, the LEDs will have specifics functions, see 'LEDS' section.



**LEDS:**

The device has got five LEDs that are used to give information of the functioning status.  
The various meanings of the LEDs are described in the table below.

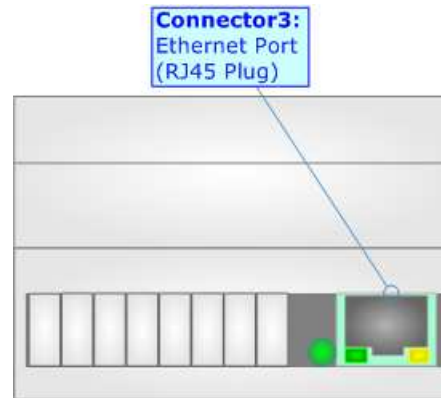
LED	Normal Mode	Boot Mode
1: Device state (green)	Blinks slowly (~1Hz)	<b>Blinks quickly:</b> Boot state <b>Blinks very slowly (~0.5Hz):</b> update in progress
2: wM-Bus comm. (green)	Blinks quickly when data on wM-Bus arrives	<b>Blinks quickly:</b> Boot state <b>Blinks very slowly (~0.5Hz):</b> update in progress
3: M-Bus comm. (green) (only for HD67086-xxx-B2-xxxMHz-xxx)	Blinks quickly when a reply to a M-Bus request arrives	<b>Blinks quickly:</b> Boot state <b>Blinks very slowly (~0.5Hz):</b> update in progress
4: BACnet comm.	Blinks quickly when BACnet communication is running	<b>Blinks quickly:</b> Boot state <b>Blinks very slowly (~0.5Hz):</b> update in progress
5: Link Ethernet (green)	<b>ON:</b> Ethernet cable connected <b>OFF:</b> Ethernet cable disconnected	<b>ON:</b> Ethernet cable connected <b>OFF:</b> Ethernet cable disconnected



**ETHERNET:**

Ethernet port is used for BACnet/IP communication and for programming the device.

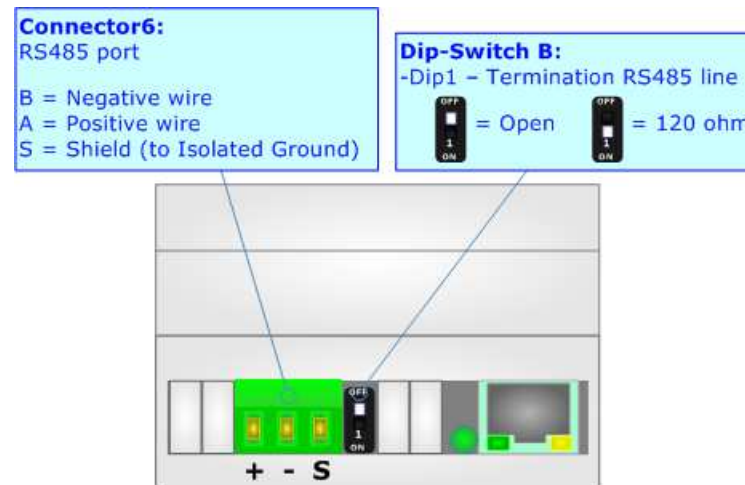
The Ethernet connection must be made using Connector2 of HD67086-xxx-B2-xxxMHz-0 or HD67086-xxx-B2-xxxMHz-xxx with at least a Category 5E cable. The maximum length of the cable should not exceed 100m. The cable has to conform to the T568 norms relative to connections in cat.5 up to 100 Mbps. To connect the device to an Hub/Switch is recommended the use of a straight cable, to connect the device to a PC/PLC/other is recommended the use of a cross cable.



### RS485:

RS485 port is used for BACnet MS/TP communication.

To terminate the RS485 line with a 120Ω resistor, it is necessary to put dip 1 ON, like in figure.



The maximum length of the cable should be 1200m (4000 feet).

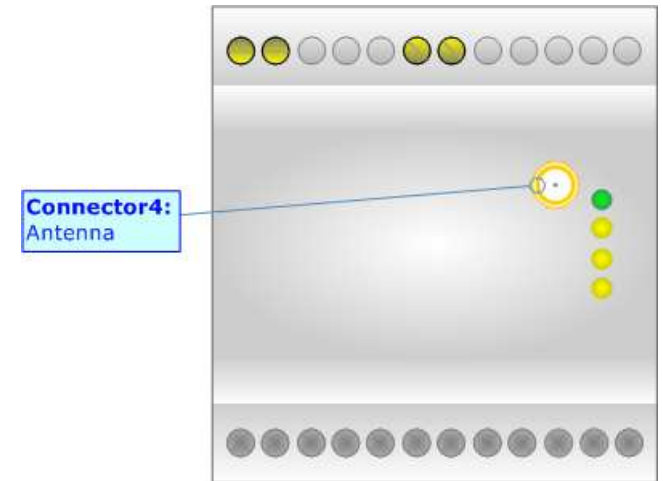
Here some codes of cables:

- Belden: p/n 8132 - 2x 28AWG stranded twisted pairs conductor + foil shield + braid shield;
- Belden p/n 82842 - 2x 24AWG stranded twisted pairs conductor + foil shield + braid shield;
- Tasker: p/n C521 - 1x 24AWG twisted pair conductor + foil shield + braid shield;
- Tasker: p/n C522 - 2x 24AWG twisted pairs conductor + foil shield + braid shield.

**M-BUS WIRELESS:**

The standards of M-Bus Wireless are specified in EN 13757-4. The signal is @ 868Mhz or 433 MHz or 169 MHz (in relation to the order code). Our converter supports wM-Bus Mode S, Mode T and Mode C.

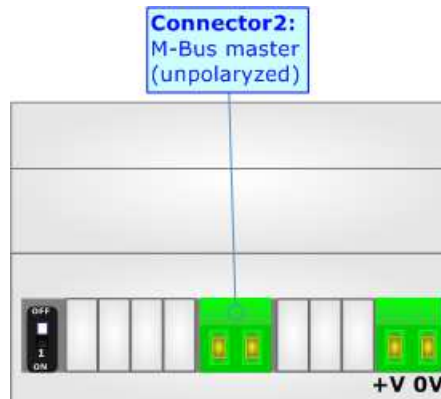
The Antenna connector is a SMA Female ('Female Outer Shell' and 'Female Receptacle') so the Antenna must have a SMA Male connector.



**M-BUS:**

The M-Bus is a unpolarized bus.

A two wire standard telephone cable (JYStY N\*2\*0.8 mm) is used as the transmission medium for the M-Bus. The maximum distance between a slave and the repeater is 350m; this length corresponds to a cable resistance of up 29Ω. This distance applies for the standard configuration having Baud rates between 300 and 9600 Baud, and a maximum of 250 slaves. The maximum distance can be increased by limiting the Baud rate and using fewer slaves, but the bus voltage in the space state must at no point in a segment fall below 12V, because of the remote powering of the slaves. In the standard configuration the total cable length should not exceed 1000m, in order to meet the requirement of a maximum cable capacitance of 180nF. (*Taken from M-Bus specifics*)



### USE OF COMPOSITOR SW67086:

To configure the Converter, use the available software that runs with Windows called SW67086. It is downloadable from the site [www.adfweb.com](http://www.adfweb.com) and its operation is described in this document (*this manual is referenced to the last version of the software present on our web site*). The software works with MSWindows (XP, Vista, Seven, 8, 10; 32/64bit).

When launching the SW67086, the window below appears (Fig. 2).



**Note:**

It is necessary to have installed .Net Framework 4.

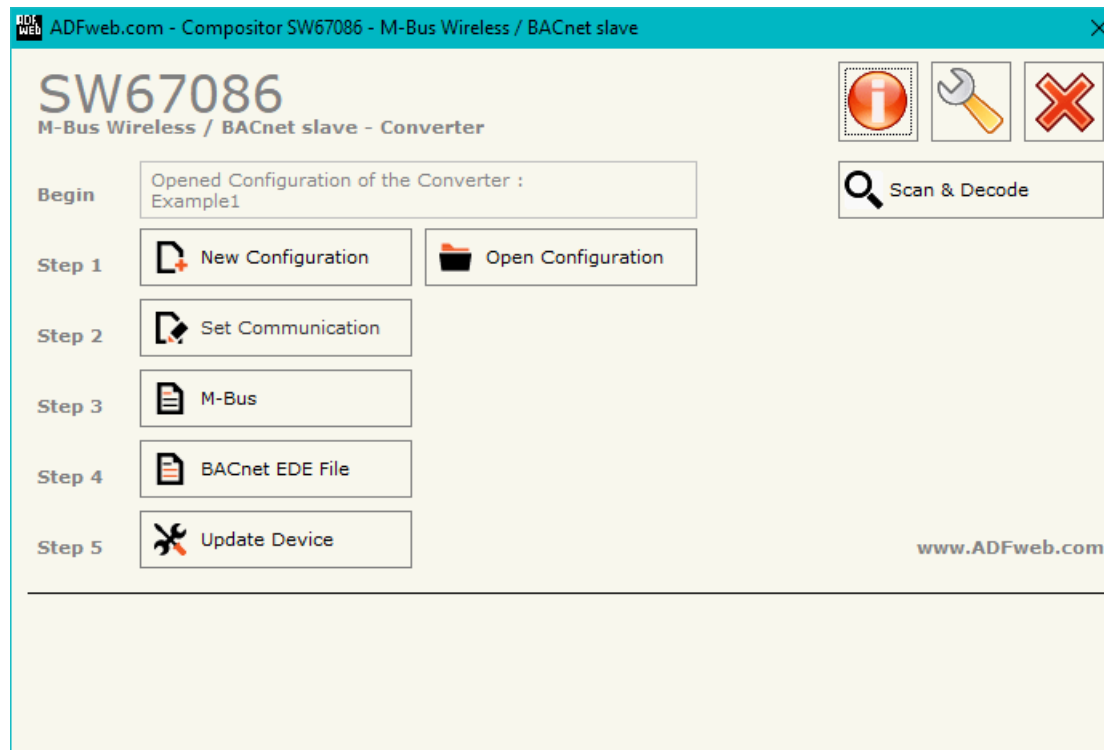
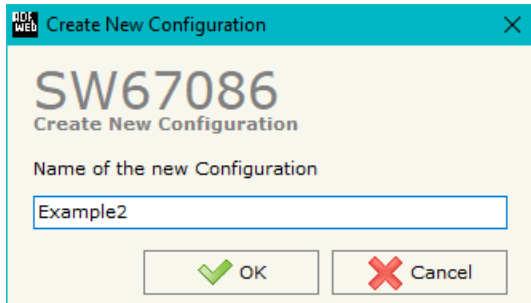


Figure 2: Main window for SW67086



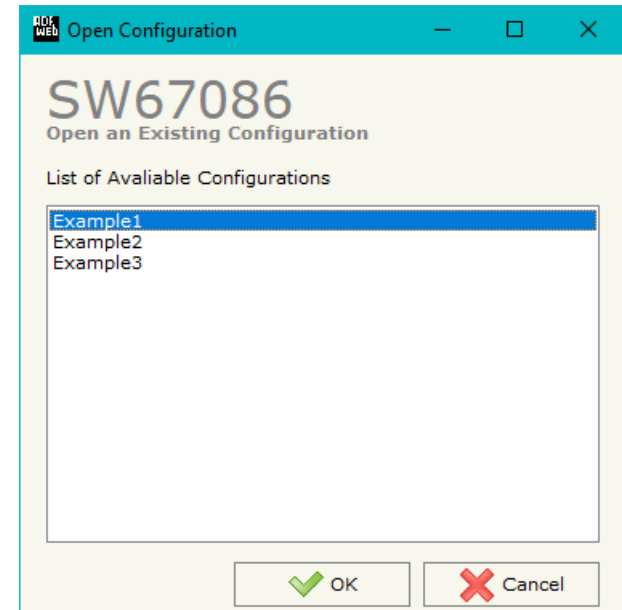
**NEW CONFIGURATION / OPEN CONFIGURATION:**

The “**New Configuration**” button creates the folder which contains the entire device’s configuration.




A device’s configuration can also be imported or exported:

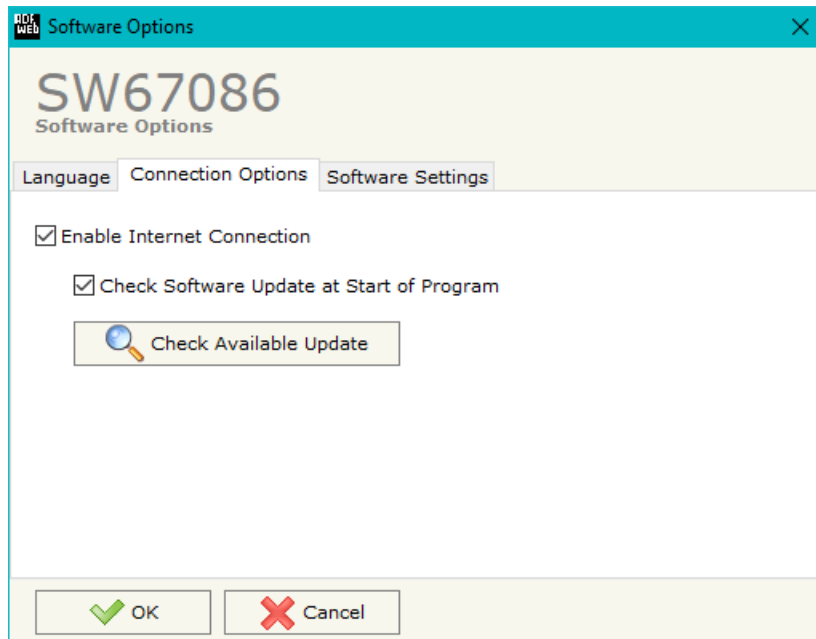
- To clone the configurations of a Programmable “M-Bus / M-Bus Wireless / BACnet Slave - Converter” in order to configure another device in the same manner, it is necessary to maintain the folder and all its contents;
- To clone a project in order to obtain a different version of the project, it is sufficient to duplicate the project folder with another name and open the new folder with the button “**Open Configuration**”.



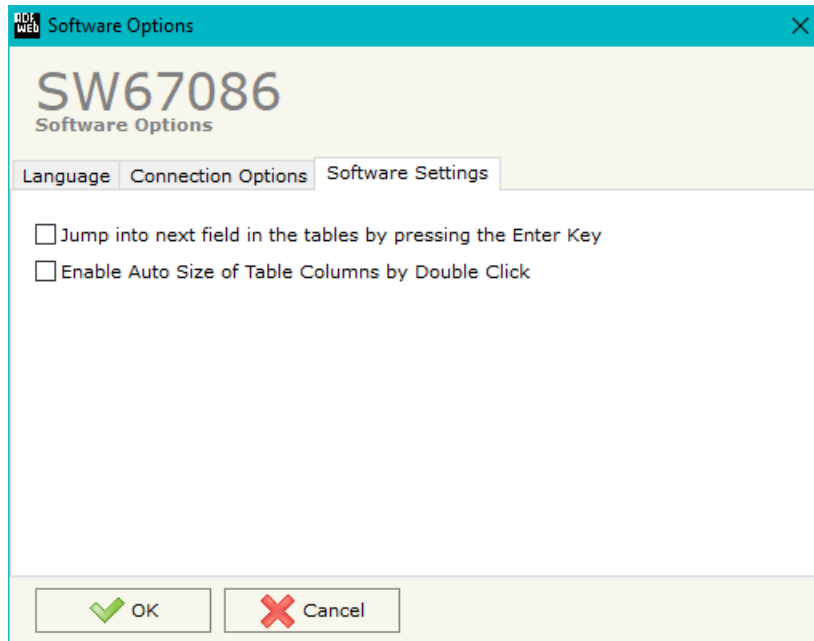
### SOFTWARE OPTIONS:

By pressing the “**Settings**” () button there is the possibility to change the language of the software and check the updatings for the compositor.

In the section “Language” it is possible to change the language of the software.



In the section “Connection Options”, it is possible to check if there are some updatings of the software compositor in ADFweb.com website. Checking the option “**Check Software Update at Start of Program**”, the SW67086 check automatically if there are updatings when it is launched.



In the section "Software Settings", it is possible to enable/disable some keyboard's commands for an easier navigation inside the tables contained in the different sections of the software.

## SET COMMUNICATION:

This section define the fundamental communication parameters of buses, BACnet, M-Bus and M-Bus Wireless.

By Pressing the **"Set Communication"** button from the main window for SW67086 (Fig. 2) the window "Set Communication" appears (Fig. 3). The window is divided in four sections.

In the field **"Type"** is possible to select the type of BACnet to use from:

- BACnet/IP (it uses ethernet);
- BACnet MS/TP (it uses RS485).

If selected "BACnet/IP" the means of the fields for "BACnet" are:

- In the fields **"IP ADDRESS"** the IP address of BACnet/IP side of the converter is defined;
- In the fields **"SUBNET Mask"** the SubNet Mask of BACnet/IP side of the converter is defined;
- In the fields **"GATEWAY"** the default gateway of the network is defined. This feature can be enabled or disabled pressing the Check Box field. This feature is used for going out of the net;
- In the field **"Port"** the port used for BACnet communication is defined. The default port used for BACnet communication is 47808, but is possible to insert any value;
- In the field **"BACnet Device Name"** the name of BACnet/IP side of the converter is defined;
- In the field **"Device Identifier"** the ID of BACnet/IP side of the converter is defined;
- If the field **"BACnet description up to 32 chars"** is checked, the description of the BACnet objects can be up to 32 chars;
- If the field **"Enable BBMD"** is checked, the BBMD functions are enabled;
- If the field **"Accept FDR"** is checked, the FDR function is enabled.

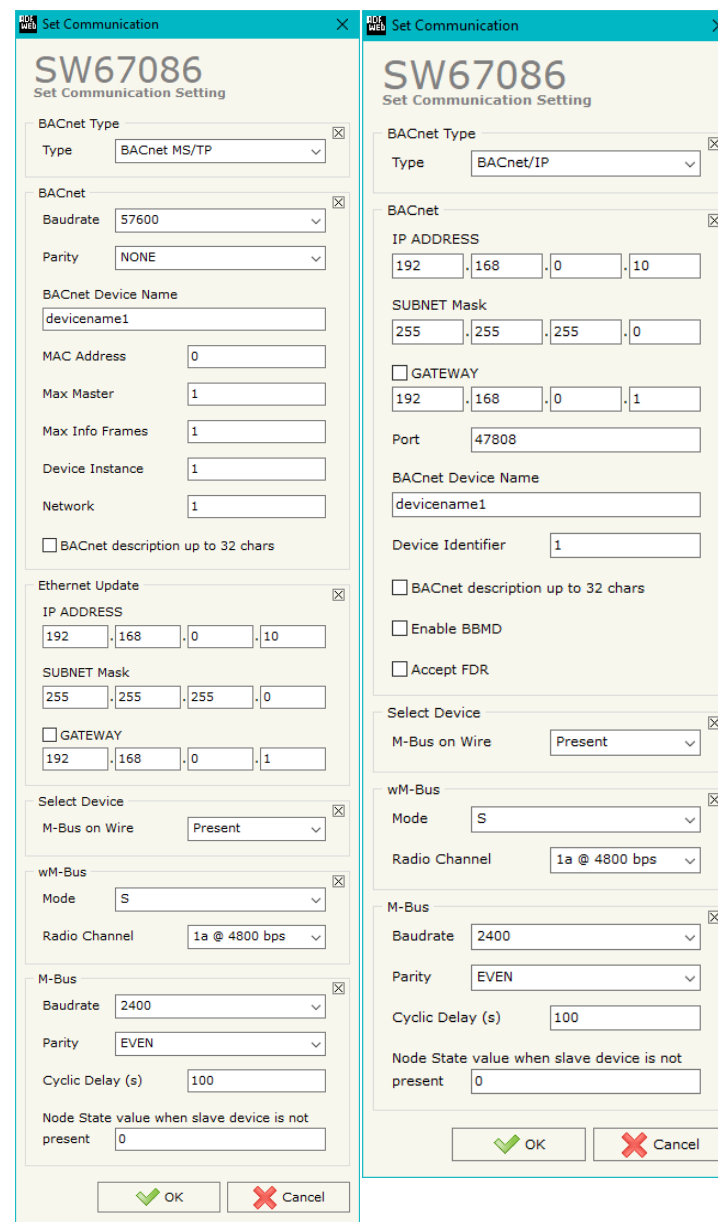


Figure 3: "Set Communication" window

If selected "BACnet MS/TP" the means of the fields for "BACnet" are:

- In the field "**Baudrate**" the data rate of the BACnet line is defined;
- In the field "**Parity**" the parity of the line is defined;
- In the field "**BACnet Device Name**" the name to give to the BACnet node is defined;
- In the field "**MAC Address**" the MAC of BACnet node (from 0 to 254) is defined;
- The field "**Max Master**" specifies the highest allowable address for master nodes. The value shall be less than or equal to 127;
- The field "**Max Info Frames**" specifies the maximum number of information frames the node may send before it must pass the token;
- In the field "**Device Instance**" the of the BACnet MS/TP side of the converter is defined;
- In the field "**Network**" the BACnet MS/TP network number is defined;
- If the field "**BACnet description up to 32 chars**" is checked, the description for the BACnet Objects can be up to 32 chars long.

In the section "Select Device" it is possible to select the type of converter (M-Bus port present or not).

The means of the fields for "wM-Bus" are:

- In the field "**Mode**" it is possible to select the Communication Mode used for the M-Wireless communication;
- In the field "**Radio Channel**" it is possible to define the Radio Channel used for the wM-Bus communication (only for 169 MHz version).

The means of the fields for "M-Bus" are (present only if the M-Bus port is "Present"):

- In the field "**Baudrate**" it is possible to select the data rate of the M-Bus line;
- In the field "**Parity**" it is possible to select the parity of the line;
- If the field "**Delay for Cyclic (s)**" it is possible to select the delay between the M-Bus polls;
- In the field "**Node State value when slave device is not present**" it is possible to insert the value to assign to the "Node State" when the Gateway doesn't find the interrogated M-Bus slave.

## M-BUS

By Pressing the “**M-Bus**” button from the main window for SW67086 (Fig. 2) the window “M-Bus Network” appears (Fig. 4).

In the section “Nodes” it is possible to create the nodes of M-Bus line:

- In the field “**Description**” it is possible to write a short description of the node.
- In the field “**M-Bus Type**” it is possible to select if the node uses M-Bus (on wire) or M-Bus Wireless.

### SECTION NODES (M-BUS NODES):

- In order to create a new node it is necessary to select which address use, selecting “**Primary ID**” or “**Secondary ID**”, to makes the requests and then insert the “Primary Address” (from 1 to 250) or the Secondary Address” (from 0 to 99999999) of M-Bus device.
- If the field “**Node State**” is checked, the Status byte of the M-Bus node is mapped into a BACnet Object.
- If the field “**Identification Number**” is checked, the Identification Number of the M-Bus node is mapped into a BACnet Object;
- In the field “**Swap Identification Num.**” it is possible to select the swap mode of the Identification Number. If swap isn’t necessary you have to select “None”; otherwise see the section “Swap Identification” (page 35) of this document for select the swap mode.
- If the field “**Convert BCD in Integer Identification Num.**” is checked, the converter converts the Identification Number that is normally expressed in BCD in a Integer value.

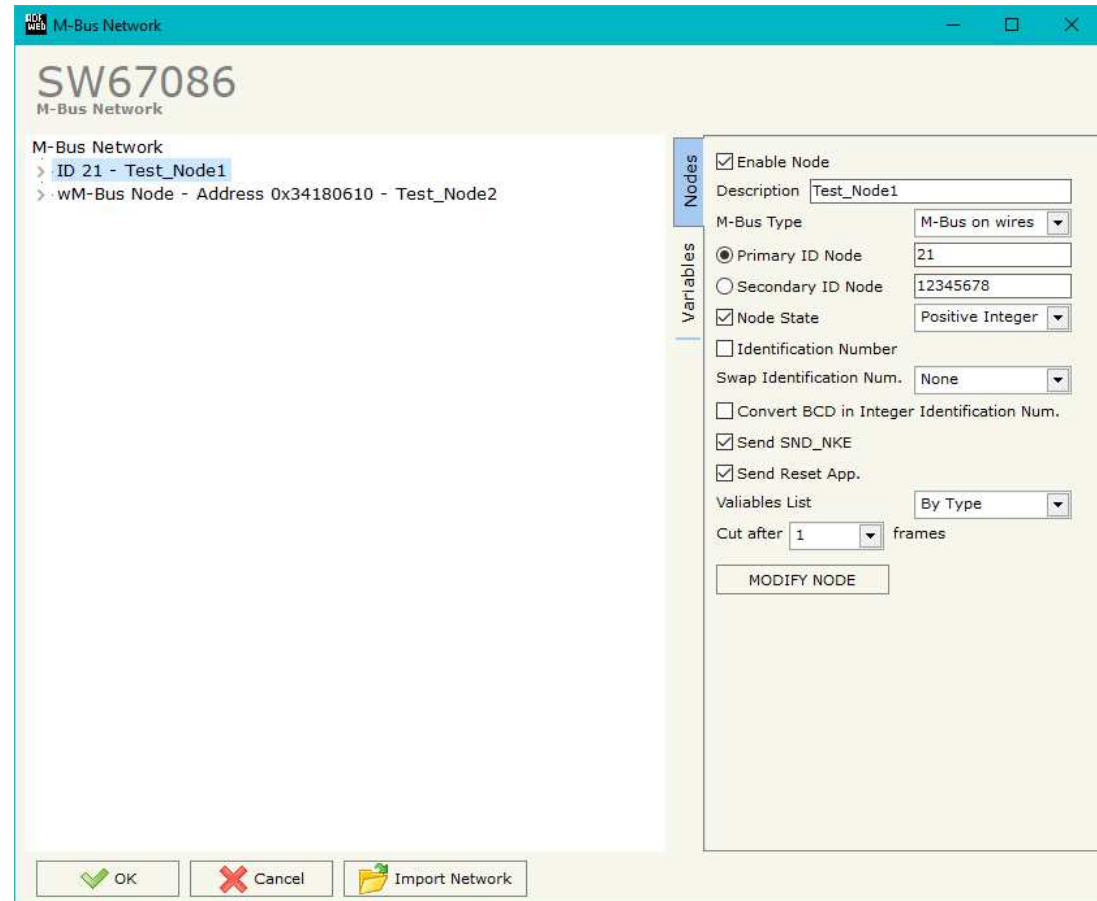


Figure 4a: “M-Bus Network” window

- If the field "**Send SND\_NKE**" is checked, the converter sends the "SND\_NKE" frame to start the communication.
- In the field "**Send Reset App.**" is checked, the converter sends the "Application Reset" command to the slave.
- In the field "**Variables List**" it is possible to select which type of variables definition to use. If is selected "By Type" it is necessary to fill all fields in the section Variables with the correct values; otherwise if "By Position" is selected, it is possible to insert the progressive number of the variable ned (page 32 for more information).
- In the field "**Cut after**" it is possible to select after how many frames stops data requests. It is used when the slave has got many data frames and you don't need to read all them.

After that, pressing the "**ADD NODE**" button, a new node appears in the left side of the window. In order to modify a created node it is necessary to select the desired node, change the wrong items and then press the "**MODIFY NODE**" button.

**SECTION NODES (WM-BUS NODES):**

- In the field “**Manufacturer ID**” it is necessary to define the Manufacturer ID of the wM-Bus node.
- In the field “**Address**” it is necessary to define the ID of the wM-Bus node.
- If the field “**Version**” it is necessary to define the version of the wM-Bus node.
- In the field “**Device Type**” it is possible to define the Type of the wM-Bus node.
- The field “**Key Enable**” is used to decode the M-Bus frame sent by the wM-Bus node if it uses encrypted communication. In the following 16 fields, you have to specify the key to decode the message.
- If the field “**Node State**” is checked, the Status byte of the M-Bus node is mapped into a BACnet Object.
- If the field “**Identification Number**” is checked, the Identification Number of the M-Bus node is mapped into a BACnet Object;
- If the field “**RSSI**” is checked, the RSSI of the signal is mapped into a BACnet Object.
- If the field “**Convert BCD in Integer Identification Num.**” is checked the Converter converts the Identification Number that is normally expressed in BCD in a Integer.
- In the field “**Swap Identification Num.**” it is possible to select the swap mode of the Identification Number. If swap isn’t necessary you have to select “None”; otherwise see the section “Swap Identification” (page 35) of this document for select the swap mode.

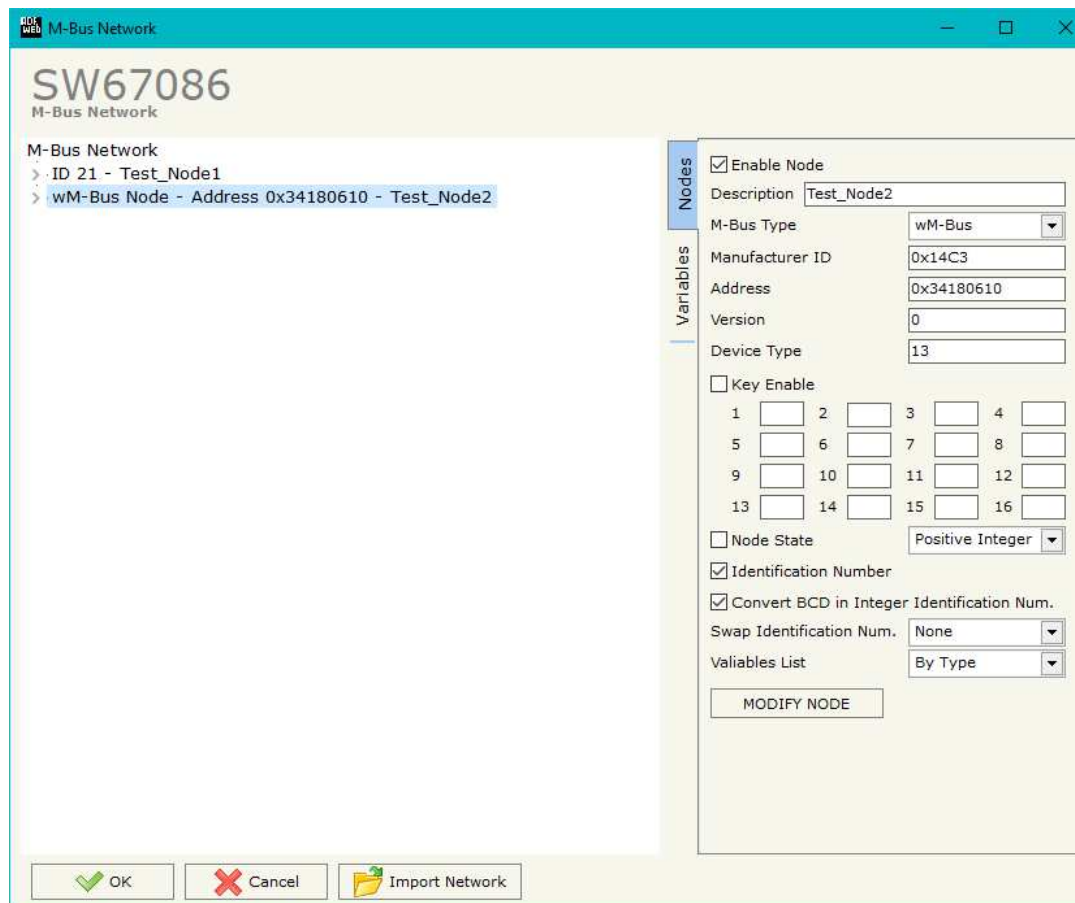


Figure 4b: “M-Bus Network” window



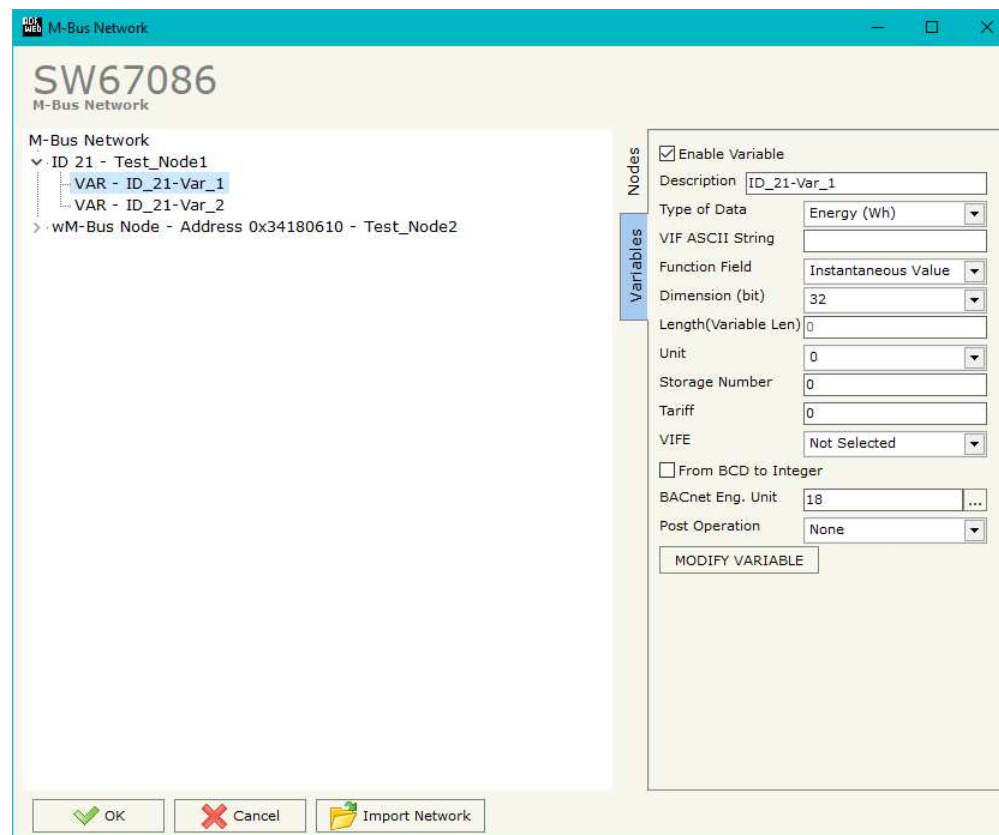
- In the field "**Variables List**" it is necessary to select which type of variables definition to use. If is selected "By Type" it is necessary to fill all fields, in the section Variables, with the correct values; otherwise if "By Position" is selected you can insert the progressive number of the variable that you need (page 32 for more information).

After that, pressing the "**ADD NODE**" button, a new node appears in the left side of the window. In order to modify a created node it is necessary to select the desired node, change the wrong items and then press the "**MODIFY NODE**" button.

### SECTION VARIABLES (BY TYPE):

Selecting the desired node it is possible to add a variable. In order to create a new variable it is necessary to fill these items:

- To use the created variable the field "**Enable Variable**" must be checked. If you have created a variable but for the moment it is unused it is possible to uncheck the field "Enable Variable" without delete it;
- In the field "**Description**" it is possible to write a description of the variable (it isn't a necessary information, it helps the readability of the tree of network);
- The field "**Type of Data**" is used to select the unit of measure;
- In the field "**VIF ASCII String**" insert the string of VIF. It is possible to use this field only if the "Type of Data" is "VIF is in ASCII";
- In the field "**Function Field**" it is necessary to select the type of data;
- The field "**Dimension**" is used to select the dimension of the variable (8, 16, 24, 32, 32 real, 48, 64 bit, Variable Length);
- In the field "**Length(Variable Len)**" insert the length of the data in the case of the dimension is "Variable Length";
- In the field "**Unit**" if it is necessary it is possible to select the unit of that variable. The Unit is used for indicates from which device the data come;
- In the field "**Storage Number**" if it is necessary it is possible to insert the value of storage counter of that variable. With this field the slave can indicate and transmit various stored counter states or historical values, in the order in which they occur;
- In the field "**Tariff**" if it is necessary it is possible to insert the value of the tariff of that variable. The Tariff is used for indicates from which device the data come;
- In the field "**VIFE**" it is possible to select a sub-type of "Type of Data";




The screenshot shows the 'M-Bus Network' software window. The main area displays a tree view of the network structure. Under 'ID 21 - Test\_Node1', there are two variables: 'VAR - ID\_21-Var\_1' (selected) and 'VAR - ID\_21-Var\_2'. Below this, a 'wM-Bus Node - Address 0x34180610 - Test\_Node2' is visible.

The right-hand pane, titled 'Variables', shows the configuration for the selected variable 'VAR - ID\_21-Var\_1'. The configuration includes:

- Enable Variable
- Description: ID\_21-Var\_1
- Type of Data: Energy (Wh)
- VIF ASCII String: (empty)
- Function Field: Instantaneous Value
- Dimension (bit): 32
- Length(Variable Len): 0
- Unit: (empty)
- Storage Number: 0
- Tariff: 0
- VIFE: Not Selected
- From BCD to Integer
- BACnet Eng. Unit: 18
- Post Operation: None

At the bottom of the configuration pane is a 'MODIFY VARIABLE' button. At the bottom of the main window are 'OK', 'Cancel', and 'Import Network' buttons.

- If the field "**From BCD to Integer**" is checked the Converter converts the BCD value of variable in Integer format. This happens only if the variable is in BCD format; if it isn't nothing changes.
- In the field "**BACnet Eng. Unit**" it is possible to select a Engineering Unit of the Object by pressing to the  button (see 'BACNET ENG. UNIT' section for more details);
- In the field "**Post Operation**" it is possible to select to do a math operation to the value.

Having completed this fields, to add the variable the button "**ADD VARIABLE**" must be pressed.

In order to modify a created variable it is necessary to select the desired variable, change the wrong items and then press the "**MODIFY VARIABLE**" button.

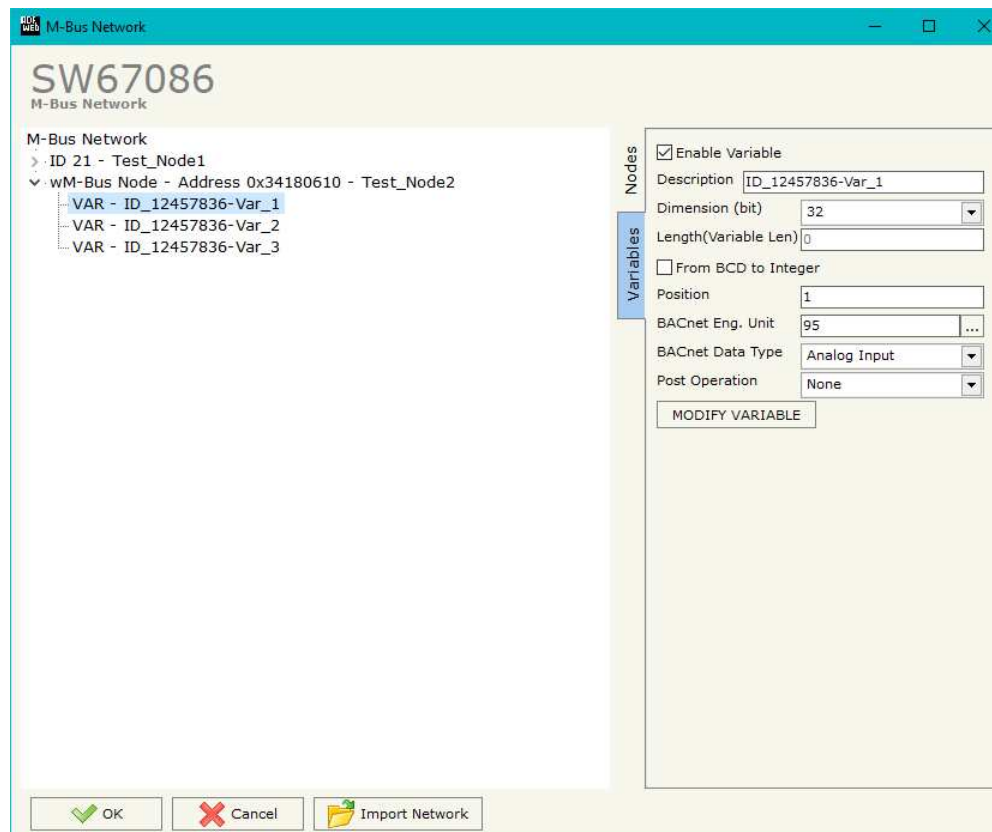
## **SECTION VARIABLES (BY POSITION):**

Selecting the desired node it is possible to add a variable. In order to create a new variable it is necessary to fill these items:

- To use the created variable the field "**Enable Variable**" must be checked. If you have created a variable but for the moment it is unused it is possible to uncheck the field "Enable Variable" without delete it;
- In the field "**Description**" it is possible to write a description of the variable (it isn't a necessary information, it helps the readability of the tree of network);
- The field "**Dimension**" is used to select the dimension of the variable (8, 16, 24, 32, 32 real, 48, 64 bit, Variable Length);
- In the field "**Length(Variable Len)**" insert the length of the data in the case of the dimension is "Variable Length";
- If the field "**From BCD to Integer**" is checked the converter converts the BCD value of variable in Integer format. This happens only if the variable is in BCD format; if it isn't nothing changes.
- In the field "**Position**" the position of the variable inside the M-Bus frame sent by the M-Bus slave is defined.
- In the field "**BACnet Eng. Unit**" it is possible to select a Engineering Unit of the Object by pressing to the  button (see 'BACNET ENG. UNIT' section for more details);
- In the field "**BACnet Data Type**" it is possible to select a type of Object used for saving the variable (see 'BACNET DATA TYPE' section for more details);
- In the field "**Post Operation**" it is possible to select to do a math operation to the value.

Having completed this fields, to add the variable the button "**ADD VARIABLE**" must be pressed.

In order to modify a created variable it is necessary to select the desired variable, change the wrong items and then press the "**MODIFY VARIABLE**" button.



Example:

0x68 – Start Byte  
 0xBD – L Field  
 0xBD – L Field  
 0x68 – Start Byte  
 0x08 – C Field  
 0x02 – A Field  
 0x72 – CI Field

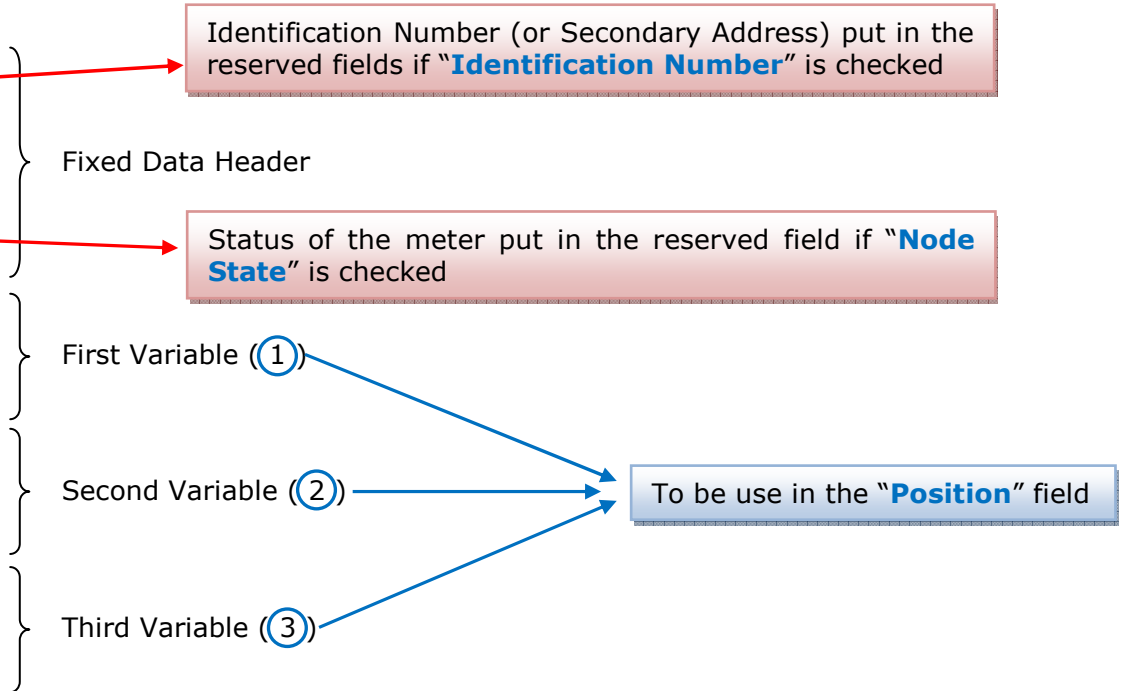
0x71 – Identification Number (Byte 4of4)  
 0x65 – Identification Number (Byte 3of4)  
 0x45 – Identification Number (Byte 2of4)  
 0x28 – Identification Number (Byte 1of4)  
 0x4D – Manufacturer (Byte 2of2)  
 0x6A – Manufacturer (Byte 1of2)  
 0x81 – Version  
 0x04 – Medium  
 0x3E – Access Number  
 0x27 – Status  
 0x00 – Signature (Byte 2of2)  
 0x00 – Signature (Byte 1of2)

0x04 – DIF  
 0x79 – VIF Identification  
 0x00 – Data (Byte 4of4)  
 0x00 – Data (Byte 3of4)  
 0x00 – Data (Byte 2of4)  
 0x00 – Data (Byte 1of4)

0x04 – DIF  
 0x06 – VIF Energy  
 0x00 – Data (Byte 4of4)  
 0x00 – Data (Byte 3of4)  
 0x00 – Data (Byte 2of4)  
 0x00 – Data (Byte 1of4)

0x44 – DIF  
 0x06 – VIF Energy  
 0x00 – Data (Byte 4of4)  
 0x00 – Data (Byte 3of4)  
 0x00 – Data (Byte 2of4)  
 0x00 – Data (Byte 1of4)

... Other Variables  
 ...  
 0x55 – Check Sum  
 0x16 – Stop Byte



**COPY, PASTE AND DELETE ITEMS:**

By pressing the right button of the mouse over an item (Variable or Node) it is possible to Copy, Paste and Delete.

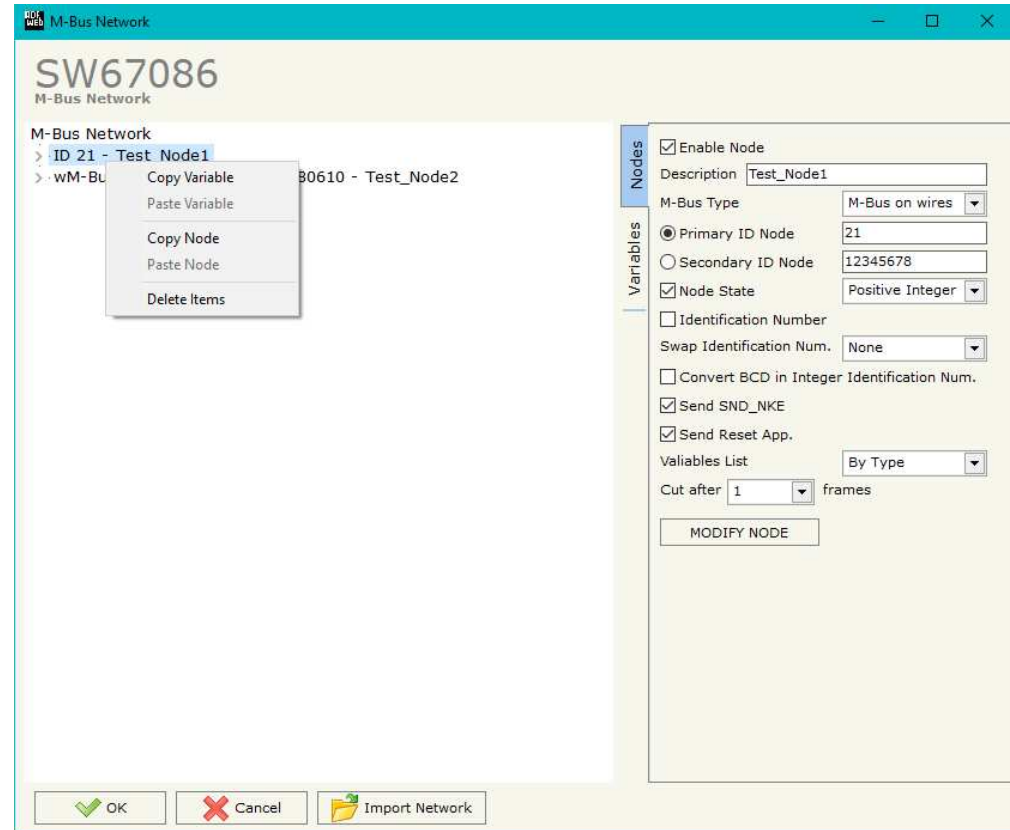
It is possible to Copy a variable from a Node and copy it to another Node, or copy a Variable from a project and paste in another one.

It is also possible to copy an entire Node with all its Variables.



**Note:**

By pressing the **“Import Network”** button it is possible to import the file generated by the Analyzer HD67031.



**BACNET ENG. UNIT:**

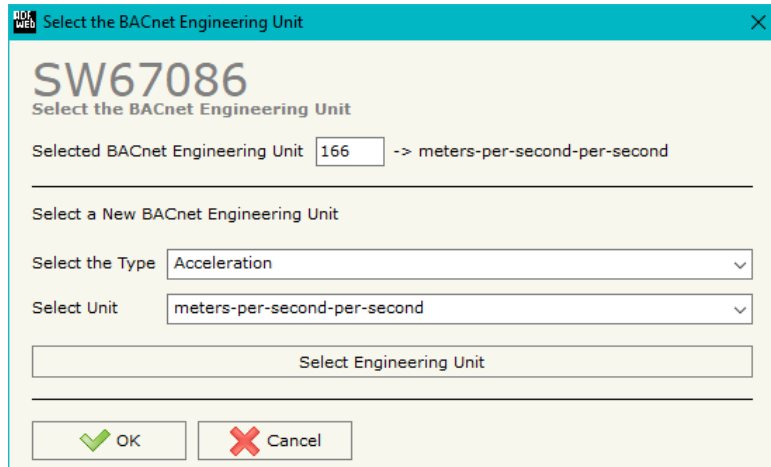



Figure 5: "Select the BACnet Engineering Unit" window

By pressing to  button the left window appears (Fig. 5).

Is possible to insert directly the Unit (using its unique number) by compiling the "Selected BACnet Engineering Unit" field; or by selecting with the fields "Select the Type" and "Select unit" the Type/Unit desired. If the second way is used, is necessary to press the "Select Engineering Unit" button for confirm the choice.

**BACNET DATA TYPE:**

When using the "Variables List → By Position" is necessary to select the Data Type of the variable. Is possible to select from these types: Analog Input (1), DateTime (3), Positive Integer (2), String (4). See the number between `[]` in the VIFE section for knowing the type to assign to a variable.

Possible choices for the fields used to create a variable:

**Type of Data:**

- |\_Energy (Wh) [\[BACnet Data Type: 1\]](#)
- |\_Energy (J) [\[1\]](#)
- |\_Volume (m<sup>3</sup>) [\[1\]](#)
- |\_Mass (Kg) [\[1\]](#)
- |\_On Time [\[1\]](#)
- |\_Operating Time [\[1\]](#)
- |\_Power (W) [\[1\]](#)
- |\_Power (J/h) [\[1\]](#)
- |\_Volume Flow (m<sup>3</sup>/h) [\[1\]](#)
- |\_Volume Flow Ext. (m<sup>3</sup>/min) [\[1\]](#)
- |\_Volume Flow Ext. (m<sup>3</sup>/s) [\[1\]](#)
- |\_Mass Flow (Kg/h) [\[1\]](#)
- |\_Flow Temperature (°C) [\[1\]](#)
- |\_Return Temperature (°C) [\[1\]](#)
- |\_Temperature Difference (K) [\[1\]](#)
- |\_External Temperature (°C) [\[1\]](#)
- |\_Pressure (bar) [\[1\]](#)
- |\_Averaging Duration [\[1\]](#)
- |\_Actuality Duration [\[1\]](#)
- |\_Type of data in VIFE
- |\_Time Point [\[3\]](#)
- |\_VIF is in ASCII [\[2\]](#)
- |\_Unit for H.C.A. [\[2\]](#)
- |\_Fabrication No [\[2\]](#)
- |\_(Enhanced) Identification [\[2\]](#)
- |\_Bus Address [\[2\]](#)

**Function Field:**

- |\_Instantaneous Value
- |\_Minimum Value
- |\_Maximum Value
- |\_Value During Error State

**Dimension (bit):**

- |\_8
- |\_16
- |\_24
- |\_32
- |\_32 real
- |\_48
- |\_64
- |\_Variable Length [\[4\]](#)



**VIFE:**

- \_ Not Selected
- \_ Credit of the nominal local legal currency units [2]
- \_ Debit of the nominal local legal currency units [2]
- \_ Access Number (transmission count) [2]
- \_ Medium (as in fixed header) [2]
- \_ Manufacturer (as in fixed header) [2]
- \_ Parameter set identification [2]
- \_ Model/Version [2]
- \_ Hardware Version # [2]
- \_ Firmware Version # [2]
- \_ Software Version # [2]
- \_ Customer Location [2]
- \_ Customer [2]
- \_ Access Code User [2]
- \_ Access Code Operator [2]
- \_ Access Code System Operator [2]
- \_ Access Code Developer [2]
- \_ Password [2]
- \_ Error flags (binary) [2]
- \_ Error mask [2]
- \_ Digital Output (binary) [2]
- \_ Digital Input (binary) [2]
- \_ Baudrate [Baud] [2]
- \_ response delay time [bittimes] [2]
- \_ Retry [2]
- \_ First storage # for cyclic storage [2]
- \_ Last storage # for cyclic storage [2]
- \_ Size of storage block [2]
- \_ Storage interval [sec(s)..day(s)] [2]
- \_ Storage interval month(s) [2]
- \_ Storage interval year(s) [2]
- \_ Duration since last readout[sec(s)..day(s)] [2]
- \_ Start (date/time) of tariff [2]
- \_ Duration of tariff (nn=01..11:min to day) [2]
- \_ Period of tariff [sec(s) to day(s)] [2]
- \_ Period of tariff months(s) [2]
- \_ Period of tariff year(s) [2]
- \_ dimensionless/ no VIF [2]
- \_ Volts [1]
- \_ Ampere [1]
- \_ Reset counter [2]
- \_ Comulation counter [2]
- \_ Control signal [2]
- \_ Day of week [2]
- \_ Week number [2]
- \_ Time point of day change [2]
- \_ State of parameter activation [2]
- \_ Special supplier information [2]
- \_ Duration since last comulation [hour(s)..year(s)] [2]
- \_ Operation time battery [hour(s)..year(s)] [2]
- \_ Date and time of battery change [3]
- \_ Energy MWh [1]
- \_ Energy GJ [1]
- \_ Volume [1]
- \_ Mass [1]
- \_ Volume 0,1 feet^3 [1]
- \_ Volume 0,1 american gallon [1]
- \_ Volume 1 american gallon [1]
- \_ Volume flow 0,001 american gallon/min [1]
- \_ Volume flow 1 american gallon/min [1]
- \_ Volume flow 1 american gallon/h [1]
- \_ Power MW [1]
- \_ Power GJ/h [1]
- \_ Flow Temperature [1]
- \_ Return Temperature [1]
- \_ Temperature Difference [1]
- \_ External Temperature [1]
- \_ Cold/Warm Temperature Limit °F [1]
- \_ Cold/Worm Temperature Limit °C [1]
- \_ Cumul. Count max power [1]

- \_ per second [2]
- \_ per minute [2]
- \_ per hour [2]
- \_ per day [2]
- \_ per week [2]
- \_ per month [2]
- \_ per year [2]
- \_ per revolution/measurement [2]
- \_ increment per input pulse on input channel [2]
- \_ increment per output pulse on output channel [2]
- \_ per liter [2]
- \_ per m<sup>3</sup> [2]
- \_ per kg [2]
- \_ per K (Kelvin) [2]
- \_ per kWh [2]
- \_ per GJ [2]
- \_ per kW [2]
- \_ per (K\*I)(Kelvin\*liter) [2]
- \_ per V (Volt) [2]
- \_ per A (Ampere) [2]
- \_ multiplied by sek [2]
- \_ multiplied by sek/V [2]
- \_ multiplied by sek/A [2]
- \_ start date(/time) of [2]
- \_ VIF contains uncorrected unit instead of corrected unit [2]
- \_ Accumulation only if positive contributions [2]
- \_ Accumulation of abs value only if negative contributions [2]
- \_ upper/lower limit value [2]

- \_ # of exceeds of lower/upper limit [2]
- \_ Date(/time) of begin/end of first/last lower/upper limit exceed[2]
- \_ Duration of limit exceed [2]
- \_ Duration of first/last [2]
- \_ Date(/time) of first/last begin/end [2]
- \_ Multiplicative correction factor [2]
- \_ Additive correction constant \* unit of VIF (offset) [2]
- \_ Multiplicative correction factor: 10<sup>3</sup> [2]
- \_ future value [2]
- \_ next VIFE's and data of this block are manufacturer specific [2]
- \_ None [2]
- \_ Too many DIFE's [2]
- \_ Storage number not implemented [2]
- \_ Unit number not implemented [2]
- \_ Tariff number not implemented [2]
- \_ Function not implemented [2]
- \_ Data class not implemented [2]
- \_ Data size not implemented [2]
- \_ Too many VIFE's [2]
- \_ Illegal VIF-Group [2]
- \_ Illegal VIF-Exponent [2]
- \_ VIF/DIF mismatch [2]
- \_ Unimplemented action [2]
- \_ No data available (undefined value) [2]
- \_ Data overflow [2]
- \_ Data underflow [2]
- \_ Data error [2]
- \_ Premature end of record [2]

**Swap Identification:**

This field is used for select the Swap mode of Identification Number.

At the moment there are these possibilities:

- None;
- Type 1.

Examples:

- Identification Number (Secondary Address): 12345678; Address Register 1000; Convert BCD in Integer Identification Num. not checked.

None	Type 1
1000: 0x1234	1000: 0x5678
1001: 0x5678	1001: 0x1234

- Identification Number (Secondary Address): 12345678; Address Register 1000; Convert BCD in Integer Identification Num. checked.

None	Type 1
1000: 0x00BC	1000: 0x614E
1001: 0x614E	1001: 0x00BC

**BACNET EDE FILE:**

By Pressing the "**BACNET EDE FILE**" button from the main window for SW67086 (Fig. 2) it is possible to generate the EDE file to be imported into the BACnet Master.

**UPDATE DEVICE:**

By pressing the “**Update Device**” button, it is possible to load the created Configuration into the device; and also the Firmware, if necessary. This by using the Ethernet port.

If you don’t know the actual IP address of the device you have to use this procedure:

- Turn OFF the Device;
- Put Dip1 of ‘Dip-Switch A’ in ON position;
- Turn ON the device
- Connect the Ethernet cable;
- Insert the IP “**192.168.2.205**”;
- Select which operations you want to do;
- Press the “**Execute update firmware**” button to start the upload;
- When all the operations are “OK” turn OFF the Device;
- Put Dip1 of ‘Dip-Switch A’ in OFF position;
- Turn ON the device.

If you know the actual IP address of the device, you have to use this procedure:

- Turn ON the Device with the Ethernet cable inserted;
- Insert the actual IP of the Converter;
- Select which operations you want to do;
- Press the “**Execute update firmware**” button to start the upload;
- When all the operations are “OK” the device automatically goes at Normal Mode.

At this point the configuration/firmware on the device is correctly updated.

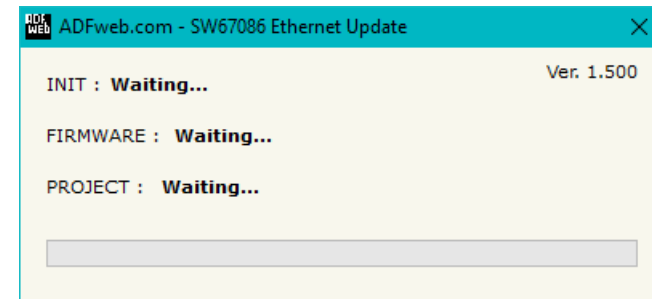
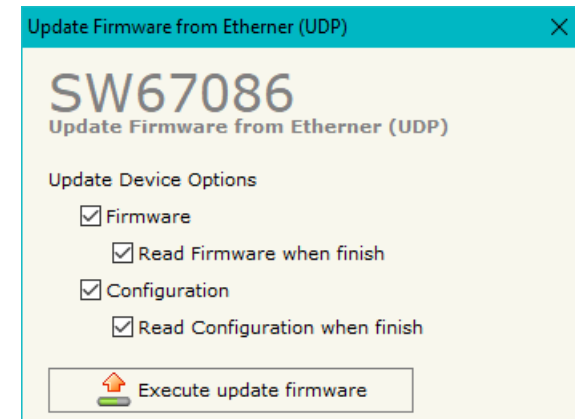
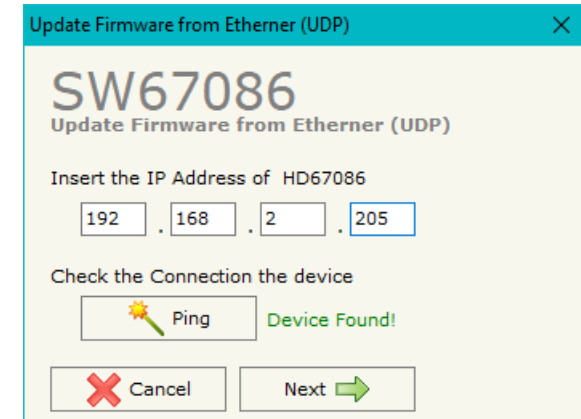


Figure 6: “Update device” windows



**Note:**

When you receive the device, for the first time, you also have to update the Firmware in the HD67086 device.



**Warning:**

If Fig. 7 appears when you try to do the Update try these points before seeking assistance:

- Check if the serial COM port selected is the correct one;
- Check if the serial cable is connected between the PC and the device;
- Try to repeat the operations for the updating;
- Try with another PC;
- Try to restart the PC;
- Check the LAN settings;
- If you are using the program inside a Virtual Machine, try to use in the main Operating System;
- If you are using Windows Seven, Vista, 8 or 10 make sure that you have the administrator privileges;
- In case you have to program more than one device, using the "UDP Update", you have to cancel the ARP table every time you connect a new device on Ethernet. For do this you have to launch the "Command Prompt" and write the command "arp -d". Pay attention that with Windows Vista, Seven, 8, 10 you have to launch the "Command Prompt" with Administrator Rights;
- Pay attention at Firewall lock.



**Warning:**

In the case of HD67086 you have to use the software "SW67086": [www.adfweb.com/download/filefold/SW67086.zip](http://www.adfweb.com/download/filefold/SW67086.zip).

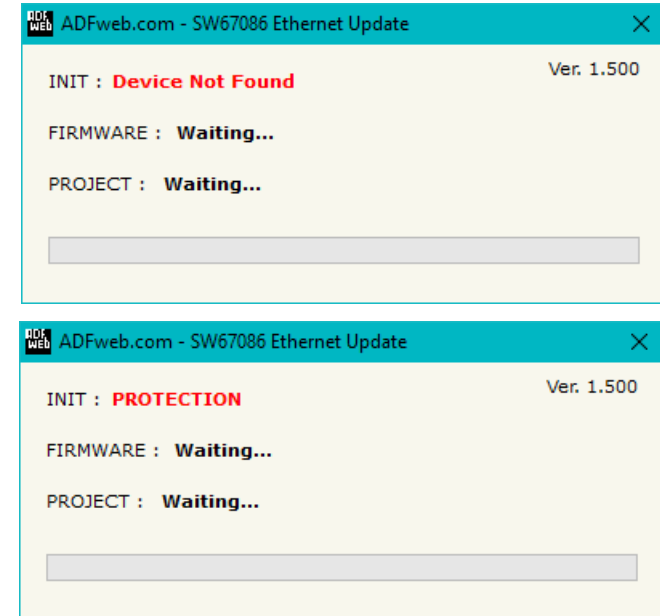
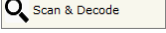


Figure 7: "Error" window

**SCAN & DECODE FUNCTION:**

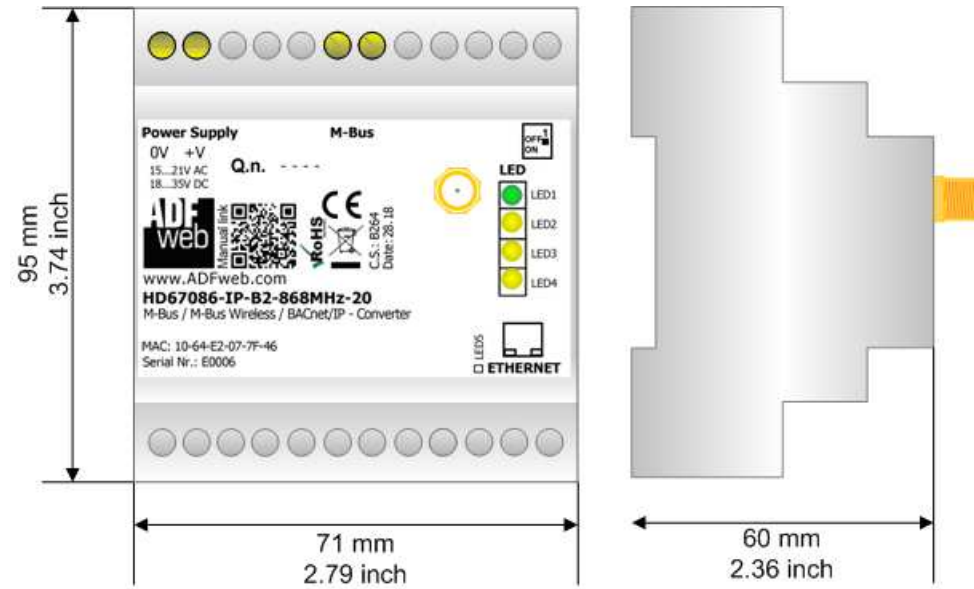
"SCAN & DECODE" functions are integrated in the configurator software SW67086. It is possible to access to these functions by simple click on the " Scan & Decode" button.

It has the following characteristics:

- Possibility to scan M-Bus network;
- Automatic decode of M-Bus telegrams;
- Easy connection directly through the Ethernet port of the converters.

For the description of the function, it is possible to refer to this manual: [www.adfweb.com/download/filefold/SCAN&DECODE\\_ENG.pdf](http://www.adfweb.com/download/filefold/SCAN&DECODE_ENG.pdf)

**MECHANICAL DIMENSIONS:**



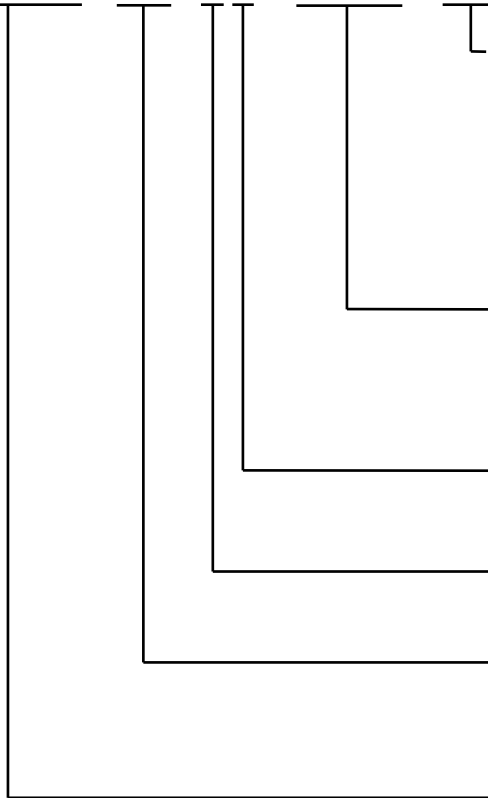
Housing: PVC  
Weight: 200g (Approx)

Figure 8: Mechanical dimensions scheme for HD67086-xxx-B2-xxxMHz-xxx

**ORDERING INFORMATIONS:**

The ordering part number is formed by a valid combination of the following:

**HD67086 - xxx - B 2 - xxxMHz - xxx**



**Available M-Bus ports**

- 0: only M-Bus Wireless port
- 20: M-Bus Wireless port + M-Bus port (up to 20 standard M-Bus slaves (1.5mA consumption))
- 40: M-Bus Wireless port + M-Bus port (up to 40 standard M-Bus slaves (1.5mA consumption))
- 80: M-Bus Wireless port + M-Bus port (up to 80 standard M-Bus slaves (1.5mA consumption))
- 160: M-Bus Wireless port + M-Bus port (up to 160 standard M-Bus slaves (1.5mA consumption))
- 250: M-Bus Wireless port + M-Bus port (up to 250 standard M-Bus slaves (1.5mA consumption))

**M-Bus Wireless Frequency**

- 169MHz: M-Bus Wireless communication @ 169 MHz
- 433MHz: M-Bus Wireless communication @ 433 MHz
- 868MHz: M-Bus Wireless communication @ 868 MHz

**Connectors Type**

- 2: Fixed Screw Terminal

**Enclosure Type**

- B: Modulbox 4M, 35mm DIN Rail mounting

**BACnet Type**

- IP: BACnet/IP
- MSTP: BACnet MS/TP

**Device Family**

- HD67086: M-Bus / M-Bus Wireless / BACnet Slave - Converter



**ACCESSORIES:**

- Order Code: **APW020** - Power Supply for M-Bus Master device that supports up to 20 Slaves
- Order Code: **APW040** - Power Supply for M-Bus Master device that supports up to 40 Slaves
- Order Code: **APW080** - Power Supply for M-Bus Master device that supports up to 80 Slaves
- Order Code: **APW160** - Power Supply for M-Bus Master device that supports up to 160 Slaves
- Order Code: **APW250** - Power Supply for M-Bus Master device that supports up to 250 Slaves

**DISCLAIMER:**

All technical content within this document can be modified without notice. The content of the document is a under continual renewal. For losses due to fire, earthquake, third party access or other accidents, or intentional or accidental abuse, misuse, or use under abnormal conditions repairs are charged to the user. ADFweb.com S.r.l. will not be liable for accidental loss of use or inability to use this product, such as loss of business income. ADFweb.com S.r.l. shall not be liable for consequences of improper use.

**OTHER REGULATIONS AND STANDARDS:****WEEE INFORMATION**

Disposal of old electrical and electronic equipment (as in the European Union and other European countries with separate collection systems).

— This symbol on the product or on its packaging indicates that this product may not be treated as household rubbish. Instead, it should be taken to an applicable collection point for the recycling of electrical and electronic equipment. If the product is disposed correctly, you will help prevent potential negative environmental factors and impact of human health, which could otherwise be caused by inappropriate disposal. The recycling of materials will help to conserve natural resources. For more information about recycling this product, please contact your local city office, your household waste disposal service or the shop where you purchased the product.

**RESTRICTION OF HAZARDOUS SUBSTANCES DIRECTIVE**

The device respects the 2002/95/EC Directive on the restriction of the use of certain hazardous substances in electrical and electronic equipment (commonly referred to as Restriction of Hazardous Substances Directive or RoHS).

**CE MARKING**

The product conforms with the essential requirements of the applicable EC directives.

**WARRANTIES AND TECHNICAL SUPPORT:**

For fast and easy technical support for your ADFweb.com SRL products, consult our internet support at [www.adfweb.com](http://www.adfweb.com).  
Otherwise contact us at the address [support@adfweb.com](mailto:support@adfweb.com)

**RETURN POLICY:**

If while using your product you have any problem and you wish to exchange or repair it, please do the following:

- Obtain a Product Return Number (PRN) from our internet support at [www.adfweb.com](http://www.adfweb.com). Together with the request, you need to provide detailed information about the problem.
- Send the product to the address provided with the PRN, having prepaid the shipping costs (shipment costs billed to us will not be accepted).

If the product is within the warranty of twelve months, it will be repaired or exchanged and returned within three weeks. If the product is no longer under warranty, you will receive a repair estimate.



**ADFweb.com S.r.l.**  
Via Strada Nuova, 17  
IT-31010 Mareno di Piave  
TREVISO (Italy)  
Phone +39.0438.30.91.31  
Fax +39.0438.49.20.99  
[www.adfweb.com](http://www.adfweb.com)

