

# User Manual

Revision 1.000  
English

## EtherNet/IP Master / Ethernet - Converter

(Order Code: HD67668-A1)

For Website information:

[www.adfweb.com?Product=HD67668](http://www.adfweb.com?Product=HD67668)

For Price information:

[www.adfweb.com?Price=HD67668-A1](http://www.adfweb.com?Price=HD67668-A1)

### Benefits and Main Features:

- ✦ Very easy to configure
- ✦ Triple Electrical isolation
- ✦ Temperature range: -40°C/+85°C (-40°F/+185°F)



For other EtherNet/IP Master products see also the following link:

**Converter EtherNet/IP Master to**  
[www.adfweb.com?Product=HD67B38](http://www.adfweb.com?Product=HD67B38)  
[www.adfweb.com?Product=HD67D24](http://www.adfweb.com?Product=HD67D24)  
[www.adfweb.com?Product=HD67E26](http://www.adfweb.com?Product=HD67E26)  
[www.adfweb.com?Product=HD67158](http://www.adfweb.com?Product=HD67158)  
[www.adfweb.com?Product=HD67643](http://www.adfweb.com?Product=HD67643)  
[www.adfweb.com?Product=HD67645](http://www.adfweb.com?Product=HD67645)  
[www.adfweb.com?Product=HD67646](http://www.adfweb.com?Product=HD67646)  
[www.adfweb.com?Product=HD67647](http://www.adfweb.com?Product=HD67647)  
[www.adfweb.com?Product=HD67661](http://www.adfweb.com?Product=HD67661)  
[www.adfweb.com?Product=HD67665](http://www.adfweb.com?Product=HD67665)  
[www.adfweb.com?Product=HD67667](http://www.adfweb.com?Product=HD67667)  
[www.adfweb.com?Product=HD67668](http://www.adfweb.com?Product=HD67668)  
[www.adfweb.com?Product=HD67669](http://www.adfweb.com?Product=HD67669)  
[www.adfweb.com?Product=HD67689](http://www.adfweb.com?Product=HD67689)  
[www.adfweb.com?Product=HD67743](http://www.adfweb.com?Product=HD67743)  
[www.adfweb.com?Product=HD67806](http://www.adfweb.com?Product=HD67806)  
[www.adfweb.com?Product=HD67955](http://www.adfweb.com?Product=HD67955)  
[www.adfweb.com?Product=HD67973](http://www.adfweb.com?Product=HD67973)

**(OPC UA Server)**  
**(LoRaWAN)**  
**(EtherCAT)**  
**(SNMP Agent)**  
**(PROFIBUS Slave)**  
**(CAN)**  
**(CANopen)**  
**(DeviceNet Slave)**  
**(PROFINET)**  
**(Modbus TCP Slave)**  
**(Serial)**  
**(Ethernet)**  
**(Modbus Slave)**  
**(BACnet Slave)**  
**(IEC 61850 Server)**  
**(KNX)**  
**(MQTT)**  
**(IO-Link Slave)**



User Manual

**INDEX:**

	Page
INDEX	2
UPDATED DOCUMENTATION	2
REVISION LIST	2
WARNING	2
TRADEMARKS	2
SECURITY ALERT	3
EXAMPLE OF CONNECTION	4
CONNECTION SCHEME	5
CHARACTERISTICS	6
CONFIGURATION	6
POWER SUPPLY	7
FUNCTION MODES	8
LEDS	9
ETHERNET	10
USE OF COMPOSITOR SW67668	11
NEW CONFIGURATION / OPEN CONFIGURATION	12
SOFTWARE OPTIONS	13
SET COMMUNICATION	15
ETHERNET/IP ACCESS	16
UPDATE DEVICE	18
ETHERNET PROTOCOL	20
MECHANICAL DIMENSIONS	22
ORDERING INFORMATIONS	23
ACCESSORIES	23
DISCLAIMER	24
OTHER REGULATIONS AND STANDARDS	24
WARRANTIES AND TECHNICAL SUPPORT	25
RETURN POLICY	25

**UPDATED DOCUMENTATION:**

Dear customer, we thank you for your attention and we remind you that you need to check that the following document is:

- ✚ Updated
- ✚ Related to the product you own

To obtain the most recently updated document, note the “document code” that appears at the top right-hand corner of each page of this document.

With this “Document Code” go to web page [www.adfweb.com/download/](http://www.adfweb.com/download/) and search for the corresponding code on the page. Click on the proper “Document Code” and download the updates.

**REVISION LIST:**

Revision	Date	Author	Chapter	Description
1.000	18/09/2020	VDB	All	First Release

**WARNING:**

ADFweb.com reserves the right to change information in this manual about our product without warning.  
ADFweb.com is not responsible for any error this manual may contain.

**TRADEMARKS:**

All trademarks mentioned in this document belong to their respective owners.

**SECURITY ALERT:****GENERAL INFORMATION**

To ensure safe operation, the device must be operated according to the instructions in the manual. When using the device, legal and safety regulation are required for each individual application. The same applies also when using accessories.

**INTENDED USE**

Machines and systems must be designed so the faulty conditions do not lead to a dangerous situation for the operator (i.e. independent limit switches, mechanical interlocks, etc.).

**QUALIFIED PERSONNEL**

The device can be used only by qualified personnel, strictly in accordance with the specifications. Qualified personnel are persons who are familiar with the installation, assembly, commissioning and operation of this equipment and who have appropriate qualifications for their job.

**RESIDUAL RISKS**

The device is state-of-the-art and is safe. The instruments can represent a potential hazard if they are inappropriately installed and operated by untrained personnel. These instructions refer to residual risks with the following symbol:

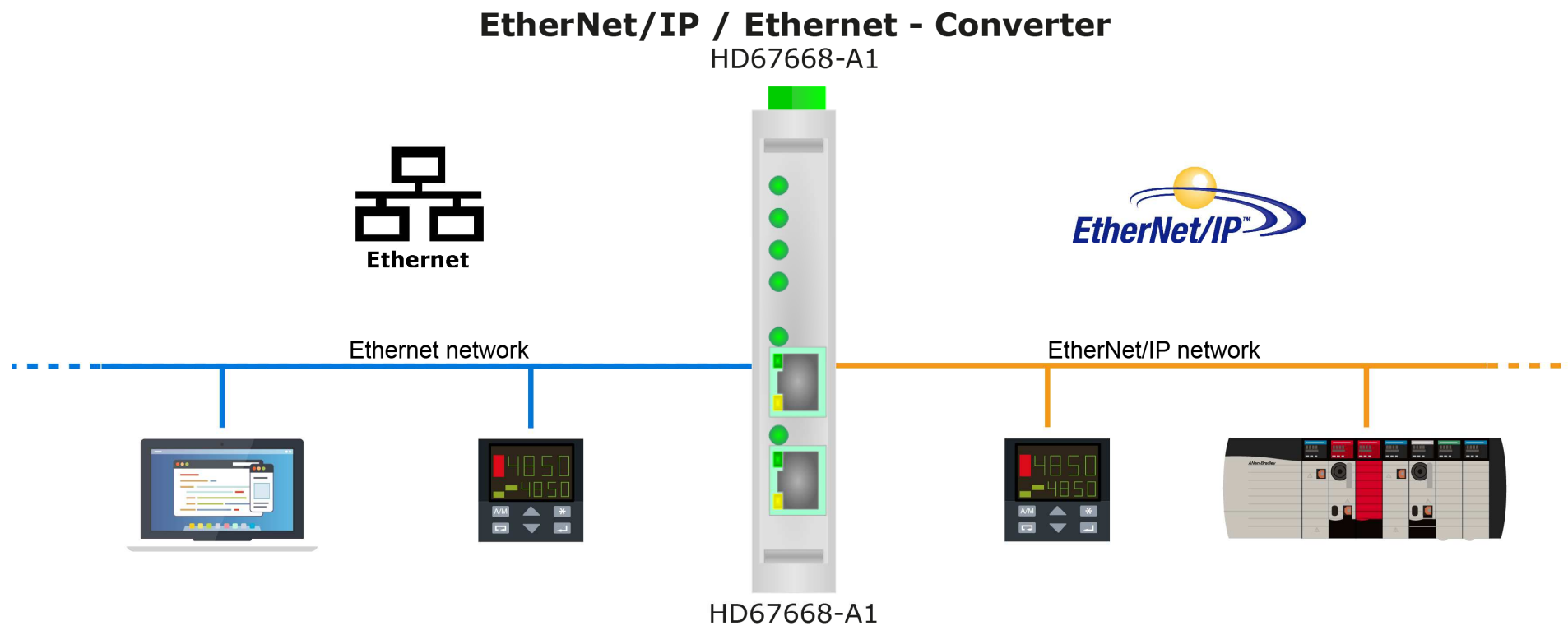


This symbol indicates that non-observance of the safety instructions is a danger for people that could lead to serious injury or death and / or the possibility of damage.

**CE CONFORMITY**

The declaration is made by our company. You can send an email to [support@adfweb.com](mailto:support@adfweb.com) or give us a call if you need it.

**EXAMPLE OF CONNECTION:**



[ADFweb.com](http://ADFweb.com)



+39 0438 309 131



+39 349 440 9592



[support@adfweb.com](mailto:support@adfweb.com)

**CONNECTION SCHEME:**

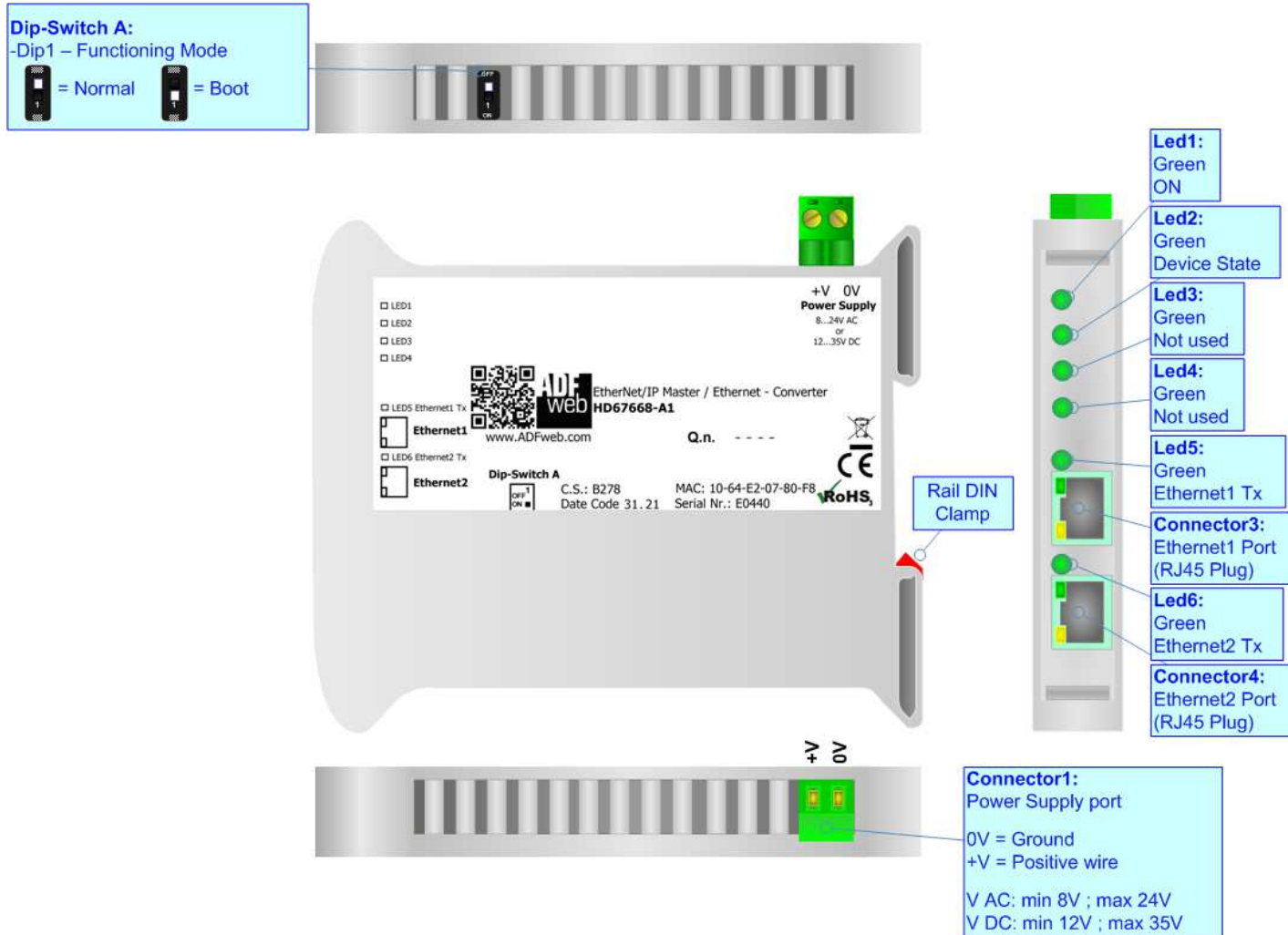


Figure 1: Connection scheme for HD67668-A1

**CHARACTERISTICS:**

The HD67668-A1 are EtherNet/IP Master / Ethernet - Converters.

It allows for the following characteristics:

- Isolation between Ethernet – Power Supply;
- Two-directional information between EtherNet/IP bus and Ethernet bus;
- Mountable on 35mm Rail DIN;
- Wide power supply input range: 8...24V AC or 12...35V DC;
- Wide temperature range: -40°C / 85°C [-40°F / +185°F].



**CONFIGURATION:**

You need Compositor SW67668 software on your PC in order to perform the following:

- Define the parameters of EtherNet/IP line;
- Define the parameters of Ethernet line;
- Define the list of EtherNet/IP slaves connected to the converter;
- Update the device.

**POWER SUPPLY:**

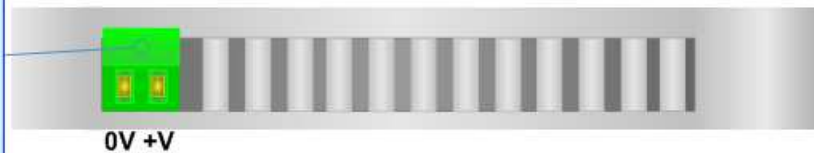
The devices can be powered at 8...24V AC and 12...35V DC. For more details see the two tables below.

VAC 		VDC 	
Vmin	Vmax	Vmin	Vmax
8V	24V	12V	35V

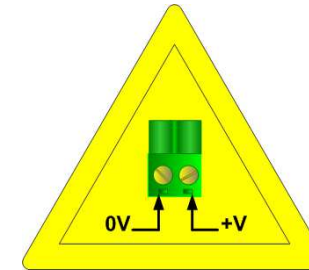
Consumption at 24V DC:

Device	Consumption [W/VA]
HD67668-A1	3.5

**Connector1:**  
 Power Supply port  
 0V = Ground  
 +V = Positive wire  
 V AC: min 8V ; max 24V  
 V DC: min 12V ; max 35V



**Caution: Do not reverse the polarity power**



HD67668-A1

**FUNCTION MODES:**

The device has got two function modes depending on the position of the 'Dip1 of Dip-Switch A':

- The first, with 'Dip1 of Dip-Switch A' at "OFF" position, is used for the normal working of the device.
- The second, with 'Dip1 of Dip-Switch A' at "ON" position, is used for uploading the Project and/or Firmware.

For the operations to follow for the updating, see 'UPDATE DEVICE' section.

According to the functioning mode, the LEDs will have specific functions, see 'LEDS' section.

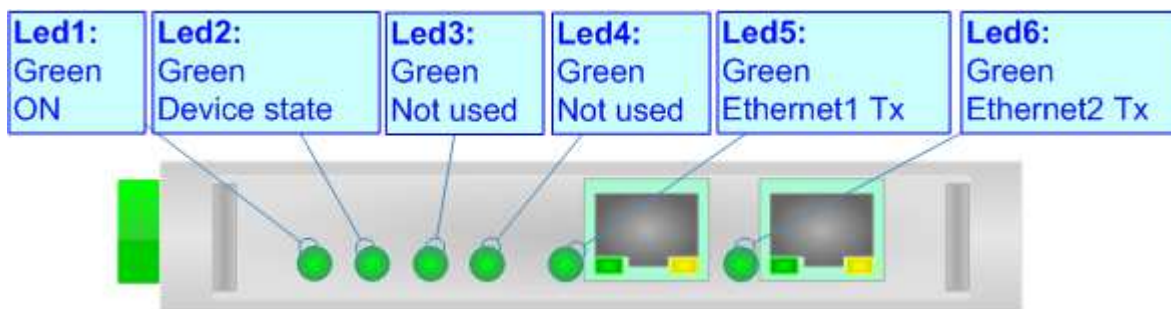




**LEDS:**

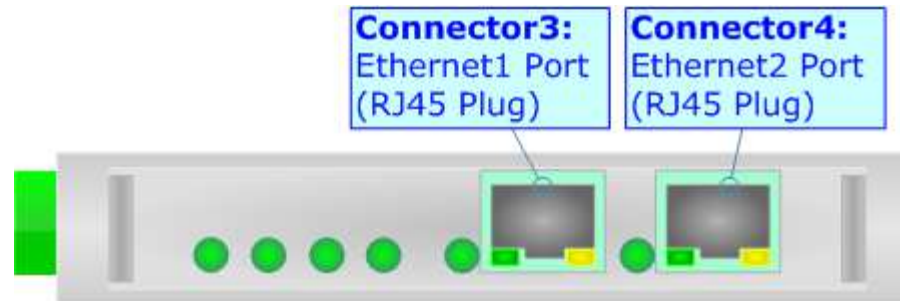
The device has got seven LEDs that are used to give information about the functioning status.  
The various meanings of the LEDs are described in the table below.

LED	Normal Mode	Boot Mode
1: ON (green)	<b>ON:</b> Device powered <b>OFF:</b> Device not powered	<b>ON:</b> Device powered <b>OFF:</b> Device not powered
2: Device State (green)	Blinks slowly (~1Hz)	<b>Blinks quickly:</b> Boot state <b>Blinks very slowly (~0.5Hz):</b> update in progress
3: Not used	OFF	<b>Blinks quickly:</b> Boot state <b>Blinks very slowly (~0.5Hz):</b> update in progress
4: Not used	OFF	<b>Blinks quickly:</b> Boot state <b>Blinks very slowly (~0.5Hz):</b> update in progress
5: Ethernet1 Tx (green)	It blinks when Ethernet or EtherNet/IP communication is running	<b>Blinks quickly:</b> Boot state <b>Blinks very slowly (~0.5Hz):</b> update in progress
6: Ethernet2 Tx (green)	It blinks when Ethernet or EtherNet/IP communication is running	<b>Blinks quickly:</b> Boot state <b>Blinks very slowly (~0.5Hz):</b> update in progress



**ETHERNET:**

The updating of the converter must be made using Connector3 and Connector4 of the HD67668-A1 with at least a Category 5E cable. The maximum length of the cable should not exceed 100m. The cable has to conform to the T568 norms relative to connections in cat.5 up to 100 Mbps. To connect the device to an Hub/Switch is recommended the use of a straight cable, to connect the device to a PC/PLC/other is recommended the use of a cross cable.



### USE OF COMPOSITOR SW67668:

To configure the Converter, use the available software that runs with Windows called SW67668. It is downloadable on the site [www.adfweb.com](http://www.adfweb.com) and its operation is described in this document. *(This manual is referenced to the last version of the software present on our web site).* The software works with MSWindows (XP, Vista, Seven, 8, 10; 32/64bit).

When launching the SW67668, the window below appears (Fig. 2).



**Note:**

It is necessary to have installed .Net Framework 4.

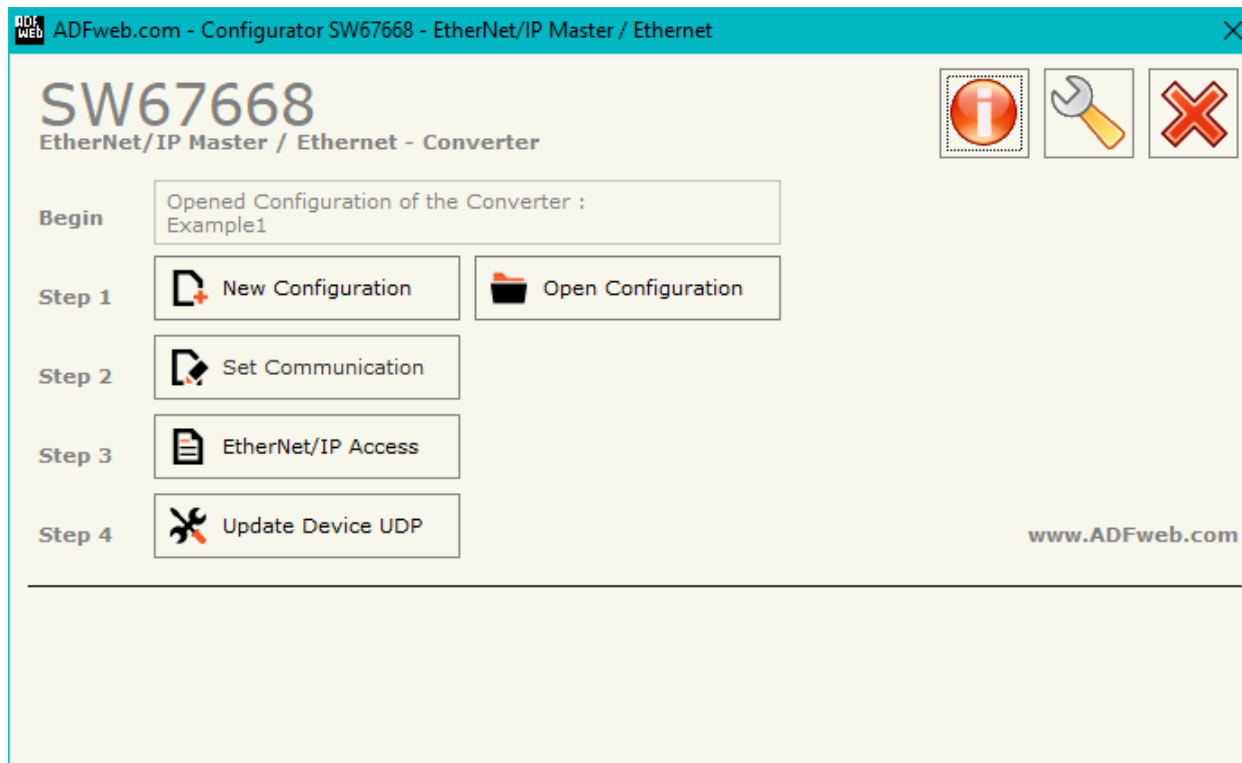
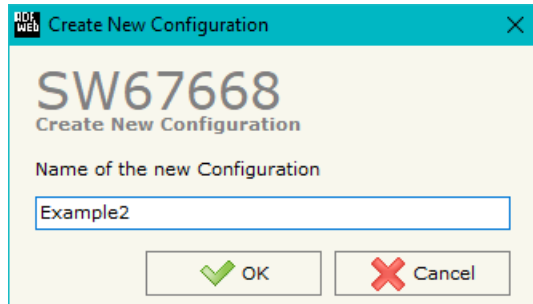


Figure 2: Main window for SW67668

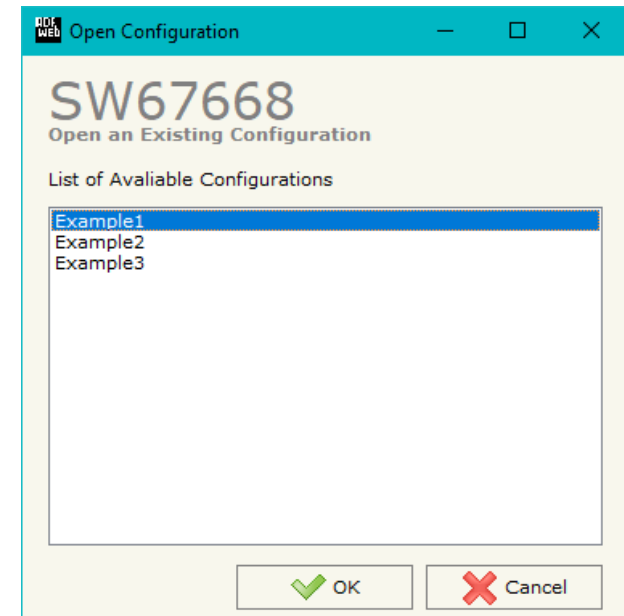
**NEW CONFIGURATION / OPEN CONFIGURATION:**

The “**New Configuration**” button creates the folder which contains the entire device’s configuration.




A device’s configuration can also be imported or exported:

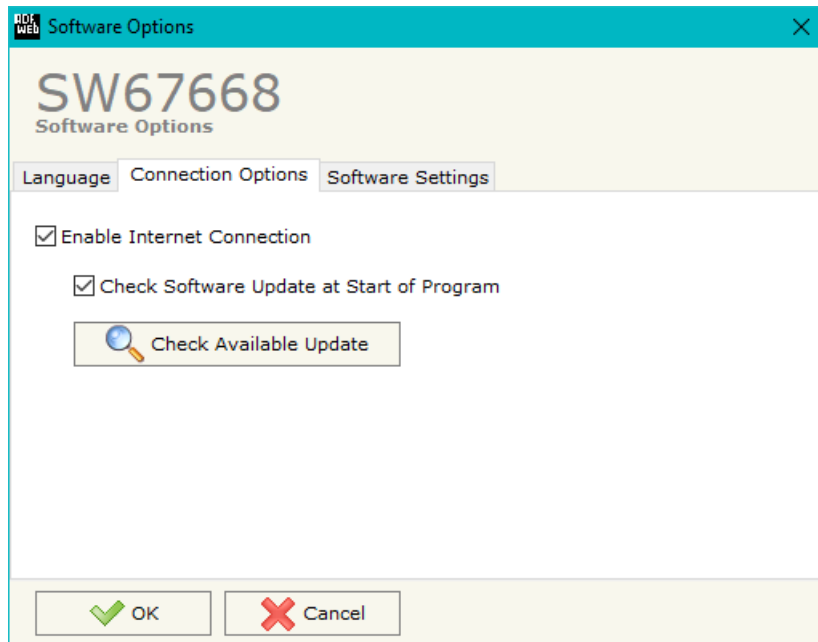
- To clone the configurations of a programmable “EtherNet/IP Master / Ethernet - Converter” in order to configure another device in the same manner, it is necessary to maintain the folder and all its contents;
- To clone a project in order to obtain a different version of the project, it is sufficient to duplicate the project folder with another name and open the new folder with the button “**Open Configuration**”.



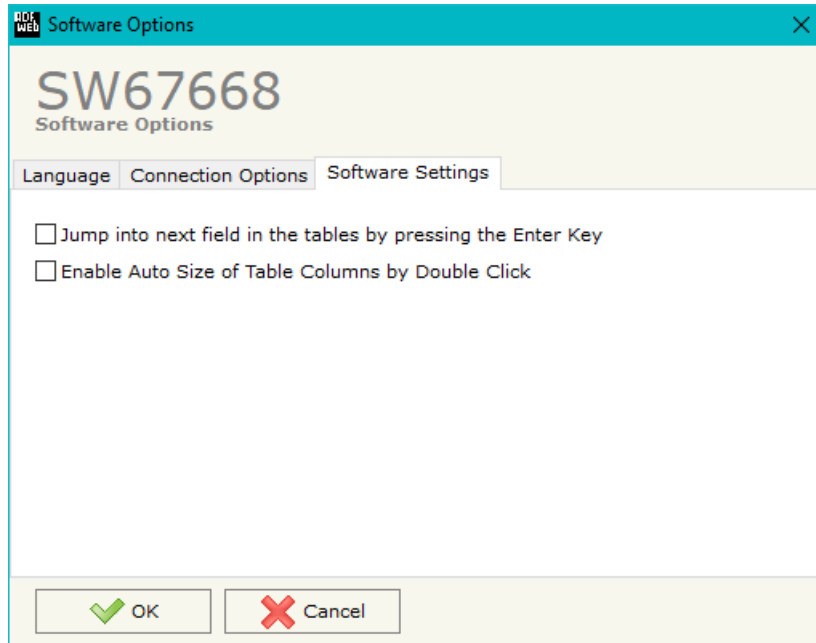
**SOFTWARE OPTIONS:**

By pressing the “**Settings**” () button there is the possibility to change the language of the software and check the updatings for the compositor.

In the section “Language” it is possible to change the language of the software.



In the section “Connection Options”, it is possible to check if there are some updatings of the software compositor in ADFweb.com website. Checking the option “**Check Software Update at Start of Program**”, the SW67668 checks automatically if there are updatings when it is launched.



In the section "Software Settings", it is possible to enable/disable some keyboard's commands for an easier navigation inside the tables contained in the different sections of the software.

### SET COMMUNICATION:

This section define the fundamental communication parameters of two buses, EtherNet/IP and Ethernet.

By Pressing the **"Set Communication"** button from the main window for SW67668 (Fig. 2) the window "Set Communication" appears (Fig. 3).

The means of the fields for "Ethernet" are:

- In the fields **"IP Address"** the IP address for Ethernet side of the converter is defined;
- In the fields **"SubNet Mask"** the SubNet Mask for Ethernet side of the converter is defined;
- In the fields **"Gateway"** the default gateway of the net is defined. This feature can be enabled or disabled pressing the Check Box field. This feature is used for going out of the net;
- In the fields **"DNS"** the IP Address of the DNS server is defined;
- In the field **"TCP Port"** the TCP port used to receive the Ethernet commands over TCP is defined;
- In the field **"UDP Port"** the UDP port used to receive the Ethernet commands over UDP is defined.

The means of the fields for "EtherNet/IP Master" are:

- In the fields **"IP ADDRESS"** the IP address for EtherNet/IP side of the converter is defined;
- In the fields **"SUBNET Mask"** the SubNet Mask for EtherNet/IP side of the converter is defined;
- In the fields **"GATEWAY"** the default gateway of the net is defined. This feature can be enabled or disabled pressing the Check Box field. This feature is used for going out of the net;
- In the field **"Port"** the port used for EtherNet/IP communication is defined. The port has a fixed value of 44818.

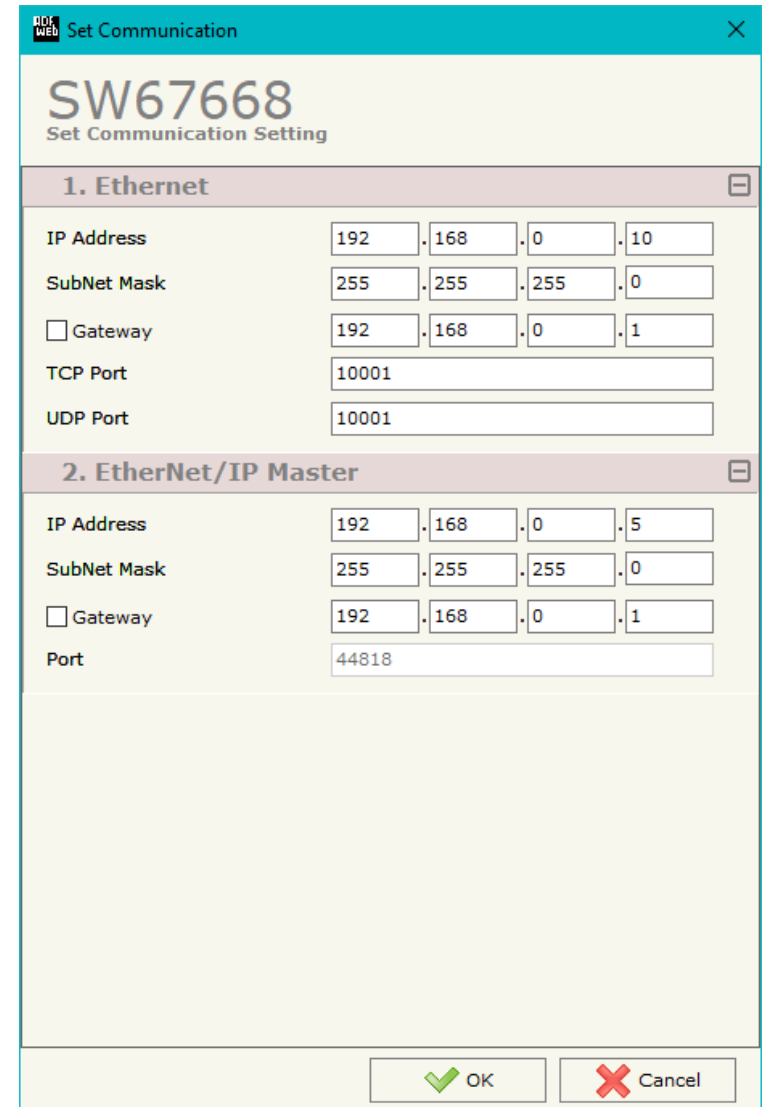


Figure 3: "Set Communication" window

**ETHERNET/IP ACCESS:**

By Pressing the “**EtherNet/IP Access**” button from the main window for SW67668 (Fig. 2) the window “Set EtherNet/IP Master Access” appears (Fig. 4).

This section is used to define the list of the EtherNet/IP Slaves to read/write with the EtherNet.

N	Enable	IP Address	Start Input	Num Input	Start Output	Num Output	Time Poll	Instance T > O	Conn. Point T > O	Instance O > T	Conn. Point O > T	Dim Header T > O	Dim Header O > T	Mnemonic
1	<input checked="" type="checkbox"/>	192.168.0.12	0	10	5	15	1000	1	100	1	101	Default	Default	
2	<input checked="" type="checkbox"/>	192.168.2.13	1	5	0	0	2500	1	100	1	101	Default	Default	
3	<input checked="" type="checkbox"/>													
4	<input checked="" type="checkbox"/>													
5	<input checked="" type="checkbox"/>													

Figure 4: “Set EtherNet/IP Slaves Access” window

The means of the fields are:

- If the field “**Enable**” is checked, the polling to the EtherNet/IP Slave is enabled;
- In the field “**IP Address**” the IP Address of the EtherNet/IP Slave is defined;
- In the field “**Start Input**” the starting Input byte of the EtherNet/IP Slave to map on EtherNet side is defined;
- In the field “**Num Input**” the number of consecutive Input byte to map on EtherNet side is defined;
- In the field “**Start Output**” the starting Output byte of the EtherNet/IP Slave to write from EtherNet side is defined;
- In the field “**Num Output**” the number of consecutive Output byte to write from EtherNet side is defined;
- In the field “**Time Poll**” the polling time in ms is defined;
- In the field “**Instance T > O**” the instance of the assembly for the Target to Originator data direction is defined;
- In the field “**Conn. Point T > O**” the connection point of the assembly for the Target to Originator data direction is defined;
- In the field “**Instance O > T**” the instance of the assembly for the Originator to Target data direction is defined;
- In the field “**Conn. Point O > T**” the connection point of the assembly for the Originator to Target data direction is defined;



- In the field "**Dim Header T > O**" the dimension of the header for the Target to Originator data direction is defined;
- In the field "**Dim Header O > T**" the dimension of the header for the Originator to Target data direction is defined;
- In the field "**Mnemonic**" a brief description is defined.

## UPDATE DEVICE:

By pressing the **“Update Device”** button, it is possible to load the created Configuration into the device; and also the Firmware, if necessary. This by using the Ethernet port.

If you don't know the actual IP address of the device you have to use this procedure:

- Turn OFF the Device;
- Put Dip1 of 'Dip-Switch A' in ON position;
- Turn ON the device
- Connect the Ethernet cable;
- Insert the IP **“192.168.2.205”**;
- Select which operations you want to do;
- Press the **“Execute update firmware”** button to start the upload;
- When all the operations are “OK” turn OFF the Device;
- Put Dip1 of 'Dip-Switch A' in OFF position;
- Turn ON the device.

If you know the actual IP address of the device, you have to use this procedure:

- Turn ON the Device with the Ethernet cable inserted;
- Insert the actual IP of the Converter;
- Select which operations you want to do;
- Press the **“Execute update firmware”** button to start the upload;
- When all the operations are “OK” the device automatically goes at Normal Mode.

At this point the configuration/firmware on the device is correctly updated.

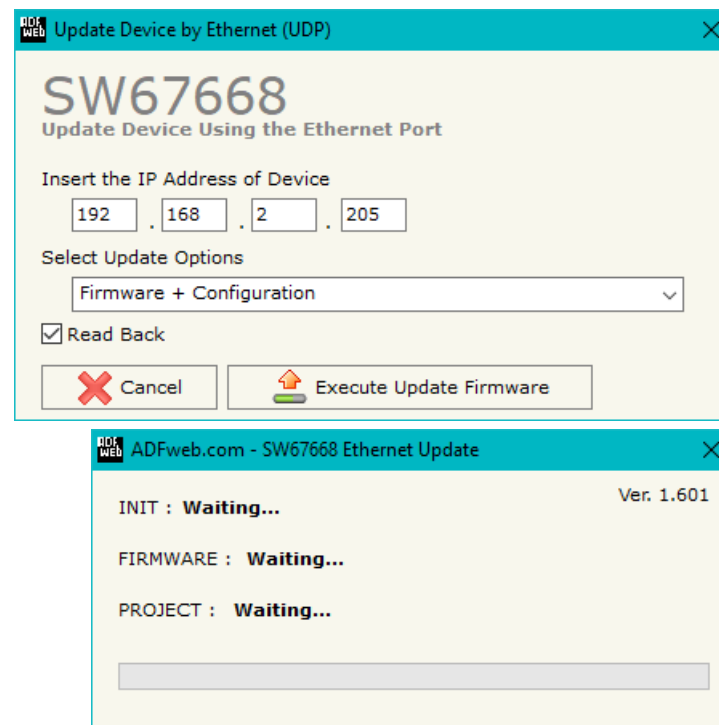


Figure 5: “Update device” windows

**Note:**

When you receive the device, for the first time, you also have to update the Firmware in the HD67668 device.

**Warning:**

If Fig. 6 appears when you try to do the Update try these points before seeking assistance:

- Try to repeat the operations for the updating;
- Try with another PC;
- Try to restart the PC;
- Check the LAN settings;
- If you are using the program inside a Virtual Machine, try to use in the main Operating System;
- If you are using Windows Seven, Vista, 8 or 10 make sure that you have the administrator privileges;
- In case you have to program more than one device, using the "UDP Update", you have to cancel the ARP table every time you connect a new device on Ethernet. For do this you have to launch the "Command Prompt" and write the command "arp -d". Pay attention that with Windows Vista, Seven, 8, 10 you have to launch the "Command Prompt" with Administrator Rights;
- Pay attention at Firewall lock.

**Warning:**

In the case of HD67668 you have to use the software "HD67668": [www.adfweb.com/download/filefold/SW67668.zip](http://www.adfweb.com/download/filefold/SW67668.zip).

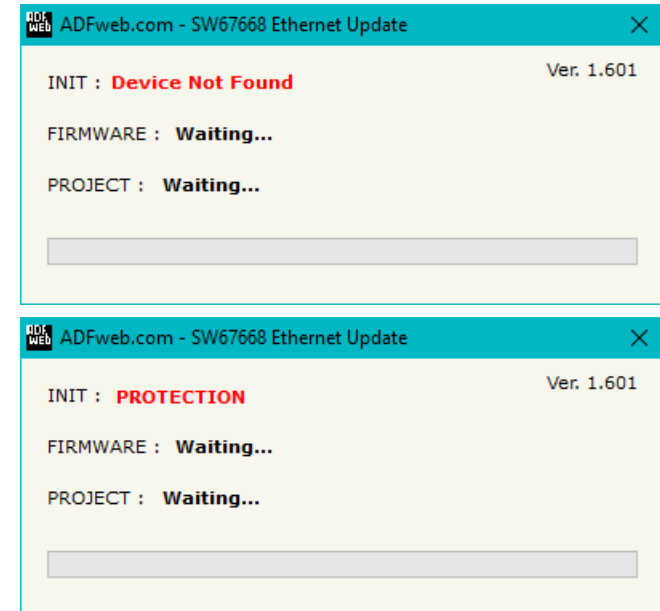


Figure 6: "Error" window

**ETHERNET PROTOCOL:**

In order to read and write the data from EtherNet/IP side, it is enough to send some simple commands over Ethernet port.

Reading data by EtherNet/IP slave: this command allows to read all the data from a specific EtherNet/IP slave.

Request:

Byte Number	Description
1	'R' (0x52)
2	`.` (0x2E)
3÷5	EtherNet/IP slave to read (000÷009) (decimal) (*)

Response:

Byte Number	Description
1	'D' (0x44)
2	`:` (0x3A)
3÷n+2	Output byte of EtherNet/IP slave (two chars for each byte)

\*n=number of Output bytes of the slave

(\*) The number of EtherNet/IP slave depends on the order with which they are defined in the "EtherNet/IP Access" section of SW67668.

Writing data to EtherNet/IP slaves: this command allows to write the data to a specific EtherNet/IP slave.

Request:

Byte Number	Description
1	'W' (0x57)
2	':' (0x2E)
3÷5	EtherNet/IP slave to read (000÷009) (decimal) (*)
6	':' (0x2E)
7÷9	Starting output byte to write (decimal)
10	':' (0x2E)
11÷13	Number of bytes to write (decimal)
14	'=' (0x3D)
15÷n+15	Data to write (hex)

\*n=number of bytes defined in bytes 11-12-13 of the command

Response:

Byte Number	Description
1	'D' (0x44)
2	':' (0x3A)
3÷n+2	Output byte of EtherNet/IP (two chars for each byte)

\*n=number of Input bytes of the slave

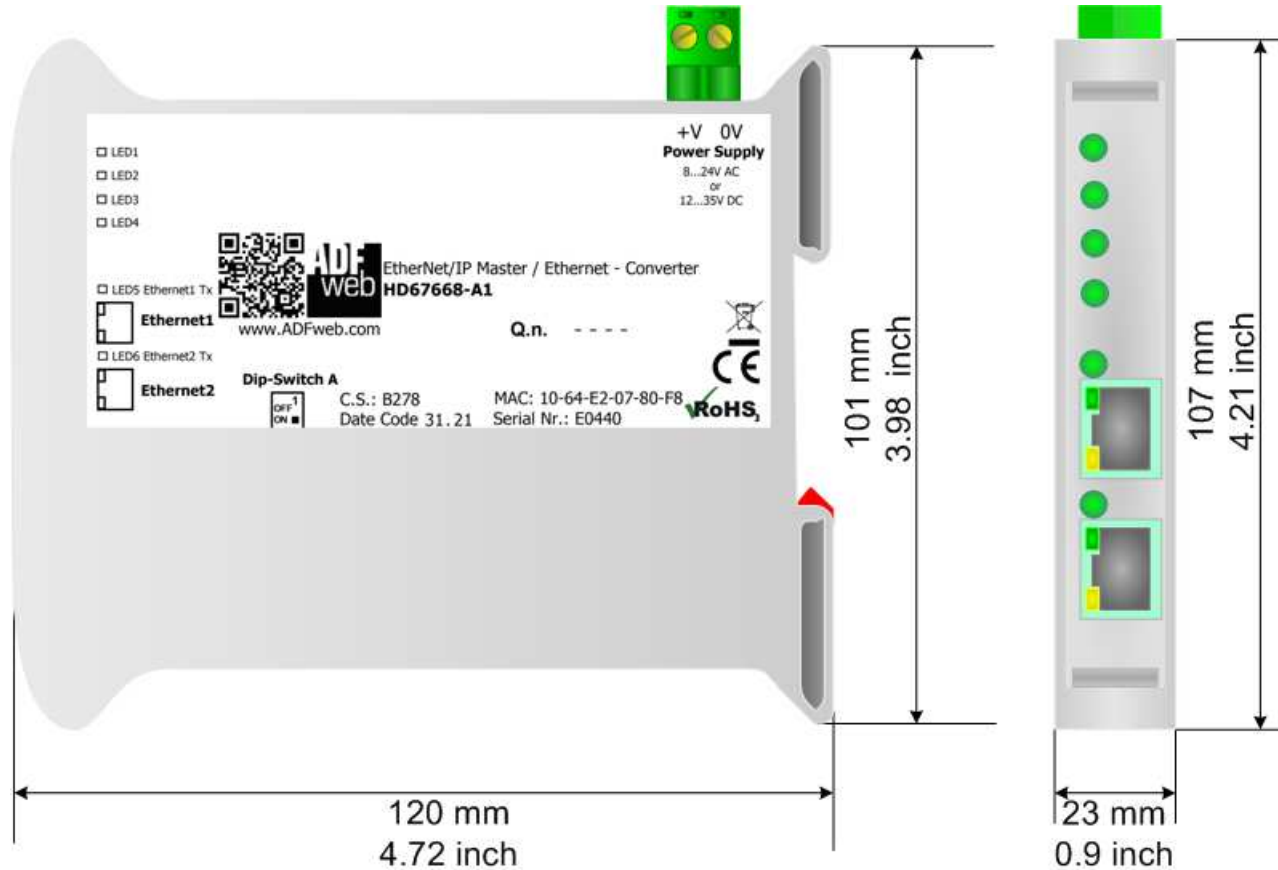
(\*) The number of EtherNet/IP slave depends on the order with which they are defined in the "EtherNet/IP Access" section of SW67668.



**Note:**

It is possible to write up to 512 bytes with a single command.

**MECHANICAL DIMENSIONS:**



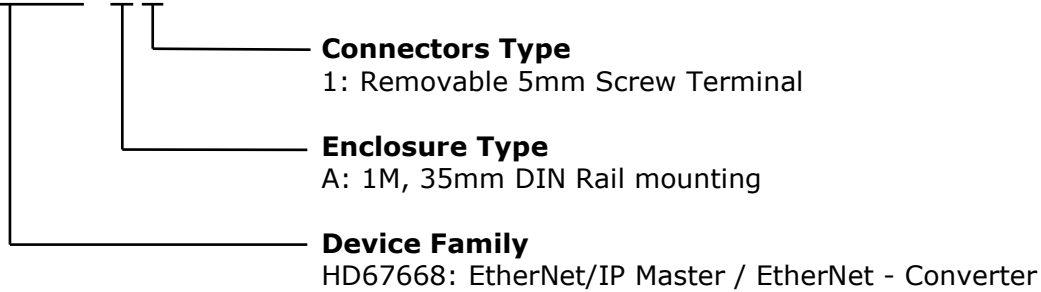
Housing: PVC  
Weight: 200g (Approx)

Figure 7: Mechanical dimensions scheme for HD67668-A1

**ORDERING INFORMATIONS:**

The ordering part number is formed by a valid combination of the following:

**HD67668 - A 1**



Order Code: **HD67668-A1** - EtherNet/IP Master / EtherNet – Converter

**ACCESSORIES:**

Order Code: **AC34011** - 35mm Rail DIN - Power Supply 220/240V AC 50/60Hz – 12 V DC

Order Code: **AC34012** - 35mm Rail DIN - Power Supply 220/240V AC 50/60Hz – 24 V DC

**DISCLAIMER:**

All technical content within this document can be modified without notice. The content of the document is a under continual renewal. For losses due to fire, earthquake, third party access or other accidents, or intentional or accidental abuse, misuse, or use under abnormal conditions repairs are charged to the user. ADFweb.com S.r.l. will not be liable for accidental loss of use or inability to use this product, such as loss of business income. ADFweb.com S.r.l. shall not be liable for consequences of improper use.

**OTHER REGULATIONS AND STANDARDS:****WEEE INFORMATION**

Disposal of old electrical and electronic equipment (as in the European Union and other European countries with separate collection systems).

— This symbol on the product or on its packaging indicates that this product may not be treated as household rubbish. Instead, it should be taken to an applicable collection point for the recycling of electrical and electronic equipment. If the product is disposed correctly, you will help prevent potential negative environmental factors and impact of human health, which could otherwise be caused by inappropriate disposal. The recycling of materials will help to conserve natural resources. For more information about recycling this product, please contact your local city office, your household waste disposal service or the shop where you purchased the product.

**RESTRICTION OF HAZARDOUS SUBSTANCES DIRECTIVE**

The device respects the 2002/95/EC Directive on the restriction of the use of certain hazardous substances in electrical and electronic equipment (commonly referred to as Restriction of Hazardous Substances Directive or RoHS).

**CE MARKING**

The product conforms with the essential requirements of the applicable EC directives.



**WARRANTIES AND TECHNICAL SUPPORT:**

For fast and easy technical support for your ADFweb.com SRL products, consult our internet support at [www.adfweb.com](http://www.adfweb.com).  
Otherwise contact us at the address [support@adfweb.com](mailto:support@adfweb.com)

**RETURN POLICY:**

If while using your product you have any problem and you wish to exchange or repair it, please do the following:

- Obtain a Product Return Number (PRN) from our internet support at [www.adfweb.com](http://www.adfweb.com). Together with the request, you need to provide detailed information about the problem.
- Send the product to the address provided with the PRN, having prepaid the shipping costs (shipment costs billed to us will not be accepted).

If the product is within the warranty of twelve months, it will be repaired or exchanged and returned within three weeks. If the product is no longer under warranty, you will receive a repair estimate.



**ADFweb.com S.r.l.**  
Via Strada Nuova, 17  
IT-31010 Mareno di Piave  
TREVISO (Italy)  
Phone +39.0438.30.91.31  
Fax +39.0438.49.20.99  
[www.adfweb.com](http://www.adfweb.com)

