

User Manual

Revision 1.000
English



PROFINET Slave / Ethernet - Converter

(Order Code: HD67659-A1)

for Website information:

<http://www.adfweb.com/?Product=HD67659>

for Price information:

<http://www.adfweb.com/?Price=HD67659-A1>

Benefits and Main Features:

- ⊕ Triple electrical isolation
- ⊕ Two Ethernet ports
- ⊕ Temperature range: -40°C/+85°C (-40°F/+185°F)



User Manual

For others PROFINET slave converters, see also the following links:

PROFINET from/to ...

www.adfweb.com?Product=HD67078
www.adfweb.com?Product=HD67090
www.adfweb.com?Product=HD67178
www.adfweb.com?Product=HD67600
www.adfweb.com?Product=HD67601
www.adfweb.com?Product=HD67602
www.adfweb.com?Product=HD67603
www.adfweb.com?Product=HD67604
www.adfweb.com?Product=HD67605
www.adfweb.com?Product=HD67606
www.adfweb.com?Product=HD67607
www.adfweb.com?Product=HD67608
www.adfweb.com?Product=HD67609
www.adfweb.com?Product=HD67610
www.adfweb.com?Product=HD67611
www.adfweb.com?Product=HD67612
www.adfweb.com?Product=HD67613
www.adfweb.com?Product=HD67614
www.adfweb.com?Product=HD67615
www.adfweb.com?Product=HD67660
www.adfweb.com?Product=HD67679
www.adfweb.com?Product=HD67719
www.adfweb.com?Product=HD67752
www.adfweb.com?Product=HD67778
www.adfweb.com?Product=HD67818
www.adfweb.com?Product=HD67848
www.adfweb.com?Product=HD67912
www.adfweb.com?Product=HD67952
www.adfweb.com?Product=HD67B22
www.adfweb.com?Product=HD67B46
www.adfweb.com?Product=HD67C77

(M-Bus)
(M-Bus Wireless)
(SNMP Manager)
(NMEA 2000)
(Serial)
(Modbus Master)
(Modbus Slave)
(PROFIBUS Master)
(PROFIBUS Slave)
(CAN)
(CANopen)
(DeviceNet Master)
(DeviceNet Slave)
(J1939)
(Modbus TCP Master)
(Modbus TCP Slave)
(SNMP Agent)
(DMX)
(NMEA 0183)
(EtherNet/IP)
(BACnet Slave)
(BACnet Master)
(IEC 61850 Server)
(IEC 61850 Client)
(KNX)
(DALI)
(HART Master)
(MQTT)
(OPC UA Client)
(OPC UA Server)
(EnOcean)

Do you have an your customer protocol?

See the following links:

www.adfweb.com?Product=HD67003

Do you need to choose a device? do you want help?

Ask it to the following link:

www.adfweb.com?Cmd=helpme

INDEX:

| | |
|----------------------------------|------|
| | Page |
| INDEX | 2 |
| UPDATED DOCUMENTATION | 2 |
| REVISION LIST | 2 |
| WARNING | 2 |
| TRADEMARKS | 2 |
| SECURITY ALERT | 3 |
| EXAMPLE OF CONNECTION | 4 |
| CONNECTION SCHEME | 5 |
| CHARACTERISTICS | 6 |
| CONFIGURATION | 6 |
| POWER SUPPLY | 7 |
| FUNCTION MODES | 8 |
| LEDS | 9 |
| ETHERNET | 10 |
| USE OF COMPOSITOR SW67659 | 11 |
| NEW PROJECT / OPEN PROJECT | 12 |
| SOFTWARE OPTIONS | 13 |
| SET COMMUNICATION | 14 |
| PROFINET XML | 15 |
| UPDATE DEVICE | 16 |
| ETHERNET PROTOCOL | 18 |
| MECHANICAL DIMENSIONS | 20 |
| ORDERING INFORMATIONS | 21 |
| ACCESSORIES | 21 |
| PLC CONFIGURATION | 22 |
| DISCLAIMER | 25 |
| OTHER REGULATIONS AND STANDARDS | 25 |
| WARRANTIES AND TECHNICAL SUPPORT | 26 |
| RETURN POLICY | 26 |

UPDATED DOCUMENTATION:

Dear customer, we thank you for your attention and we remind you that you need to check that the following document is:

- Updated
- Related to the product you own

To obtain the most recently updated document, note the “document code” that appears at the top right-hand corner of each page of this document.

With this “Document Code” go to web page www.adfweb.com/download/ and search for the corresponding code on the page. Click on the proper “Document Code” and download the updates.

REVISION LIST:

| Revision | Date | Author | Chapter | Description |
|----------|------------|--------|---------|-----------------------|
| 1.000 | 13/03/2019 | Tf | All | First release version |
| | | | | |
| | | | | |

WARNING:

ADFweb.com reserves the right to change information in this manual about our product without warning. ADFweb.com is not responsible for any error this manual may contain.

TRADEMARKS:

All trademarks mentioned in this document belong to their respective owners.

SECURITY ALERT:**GENERAL INFORMATION**

To ensure safe operation, the device must be operated according to the instructions in the manual. When using the device are required for each individual application, legal and safety regulation. The same applies also when using accessories.

INTENDED USE

Machines and systems must be designed so the faulty conditions do not lead to a dangerous situation for the operator (i.e. independent limit switches, mechanical interlocks, etc.).


QUALIFIED PERSONNEL

The device can be used only by qualified personnel, strictly in accordance with the specifications.

Qualified personnel are persons who are familiar with the installation, assembly, commissioning and operation of this equipment and who have appropriate qualifications for their job.

RESIDUAL RISKS

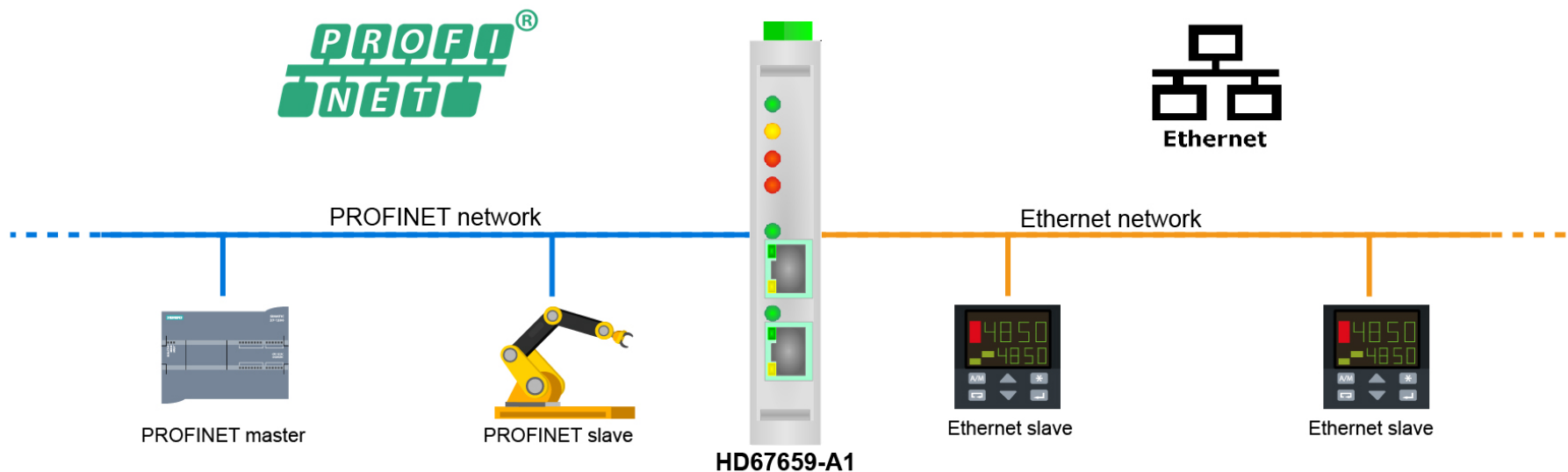
The device is state of the art and is safe. The instrument can represent a potential hazard if they are inappropriately installed and operated by personnel untrained. These instructions refer to residual risks with the following symbol:

 This symbol indicates that non-observance of the safety instructions is danger for people to serious injury or death and / or the possibility of damage.

CE CONFORMITY

The declaration is made by us. You can send an email to support@adfweb.com or give us a call if you need it.

EXAMPLE OF CONNECTION:



ADFweb.com srl
 Tel. +39 0438 309 131 - Fax +39 0438 492 099
 info@adfweb-com - www.adfweb.com

CONNECTION SCHEME:

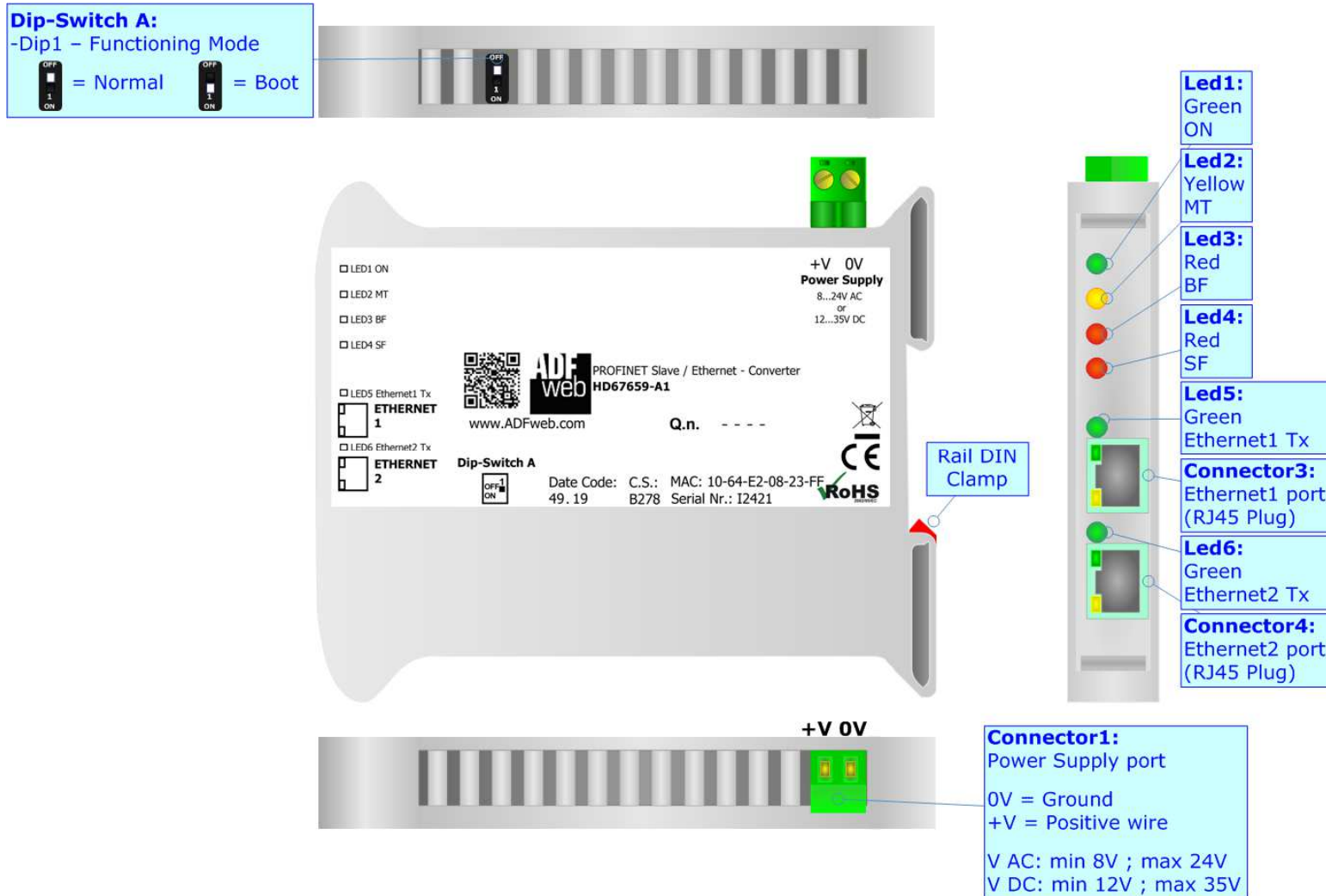


Figure 1: Connection scheme for HD67659-A1

CHARACTERISTICS:

The HD67659-A1 is a PROFINET Slave / Ethernet Converter.

It allows the following characteristics:

- Up to 500 bytes in reading and 500 bytes in writing on Ethernet side;
- Two-directional information between Ethernet and PROFINET;
- Mountable on 35mm Rail DIN;
- Wide power supply input range: 8...24V AC or 12...35V DC;
- Wide temperature range: -40°C / 85°C [-40°F / +185°F].

CONFIGURATION:

You need Compositor SW67659 software on your PC in order to perform the following:

- Define the parameter of the PROFINET;
- Define the parameter of the Ethernet/IP.

POWER SUPPLY:

The devices can be powered between a wide range of tensions. For more details see the two tables below.

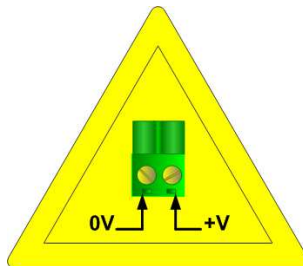
| | VAC | | VDC | |
|-------------------|-----------|------------|------------|------------|
| | Vmin | Vmax | Vmin | Vmax |
| HD67659-A1 | 8V | 24V | 12V | 35V |

Consumption at 24V DC:

| Device | W/VA |
|------------|------|
| HD67659-A1 | 4 |

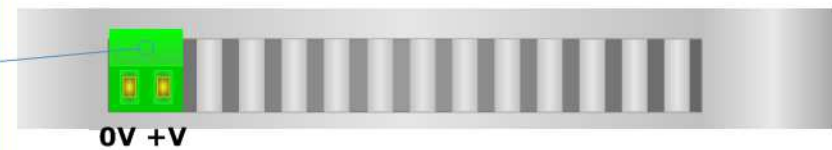


Caution: Not reverse the polarity power



HD67659-A1

Connector1:
 Power Supply port
 0V = Ground
 +V = Positive wire
 V AC: min 8V ; max 24V
 V DC: min 12V ; max 35V



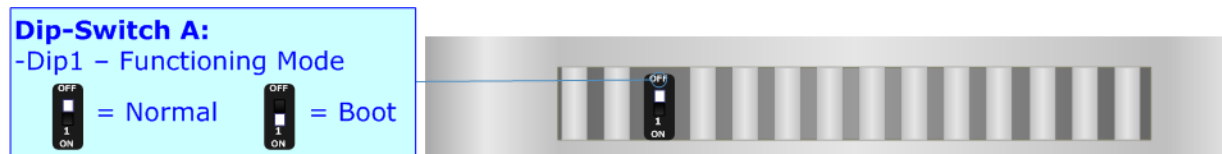
FUNCTION MODES:

The device has got two functions mode depending of the position of the Dip1 of 'Dip-Switch B':

- The first, with Dip1 in Off position (factory setting), is used for the normal working of the device.
- The second, with Dip1 in On position, is used for upload the Project/Firmware.

For the operations to follow for the updating (see 'UPDATE DEVICE' section).

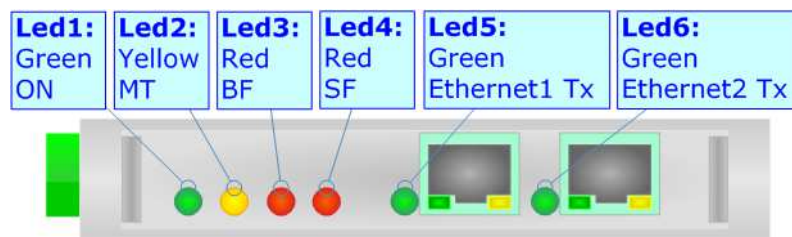
According to the functioning mode, the LEDs will have specifics functions (see 'LEDS' section).



LEDS:

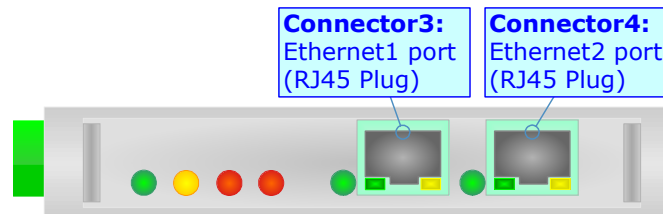
The device has got six LEDs that are used to give information of the functioning status. The various meanings of the LEDs are described in the table below.

| LED | Normal Mode | Boot Mode |
|--------------------------------------|--|---|
| 1: ON [supply voltage] (green) | ON: Device powered OFF: Device not powered | ON: Device powered OFF: Device not powered |
| 2: MT [maintenance display] (yellow) | ON: Device not able to communicate with the Master DeviceNet OFF: No maintenance are present | Blinks quickly: Boot state Blinks very slowly (~0.5Hz): update in progress |
| 3: BF [bus fault] (red) | ON: The Ethernet connection is defective; the IP address exists several times in the network; the own NameOfStation exists several times in the network; no IP address has been set Flashing: At least one configured AR is no longer in the data exchange OFF: No errors are present | Blinks quickly: Boot state Blinks very slowly (~0.5Hz): update in progress |
| 4: SF [group error] (red) | ON: At least one AR is not in the data exchange OFF: No errors are present | Blinks quickly: Boot state Blinks very slowly (~0.5Hz): update in progress |
| 5: Ethernet1 Tx (green) | Blinks when is transmitting Ethernet frames | Blinks quickly: Boot state Blinks very slowly (~0.5Hz): update in progress |
| 6: Ethernet2 Tx (green) | Blinks when is transmitting Ethernet frames | Blinks quickly: Boot state Blinks very slowly (~0.5Hz): update in progress |



ETHERNET:

The Ethernet connection must be made using Connector3 or Connector4 of HD67659-A1 with at least a Category 5E cable. The maximum length of the cable should not exceed 100m. The cable has to conform to the T568 norms relative to connections in cat.5 up to 100 Mbps. To connect the device to an Hub/Switch is recommended the use of a straight cable, to connect the device to a PC/PLC/other is recommended the use of a cross cable.



USE OF COMPOSITOR SW67659:

To configure the Converter, use the available software that runs with Windows called SW67659. It is downloadable on the site www.adfweb.com and its operation is described in this document. *(This manual is referenced to the last version of the software present on our web site)*. The software works with MSWindows (XP, Vista, Seven, 8, 10; 32/64bit).

When launching the SW67659, the window below appears (Fig. 2).


 **Note:**
It is necessary to have installed .Net Framework 4.



Figure 2: Main window for SW67659

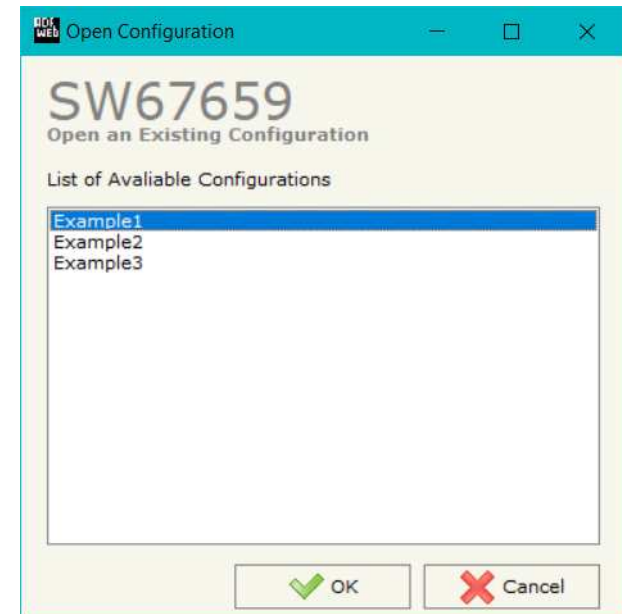
NEW CONFIGURATION / OPEN CONFIGURATION:

The “**New Configuration**” button creates the folder which contains the entire device’s configuration.




A device’s configuration can also be imported or exported:

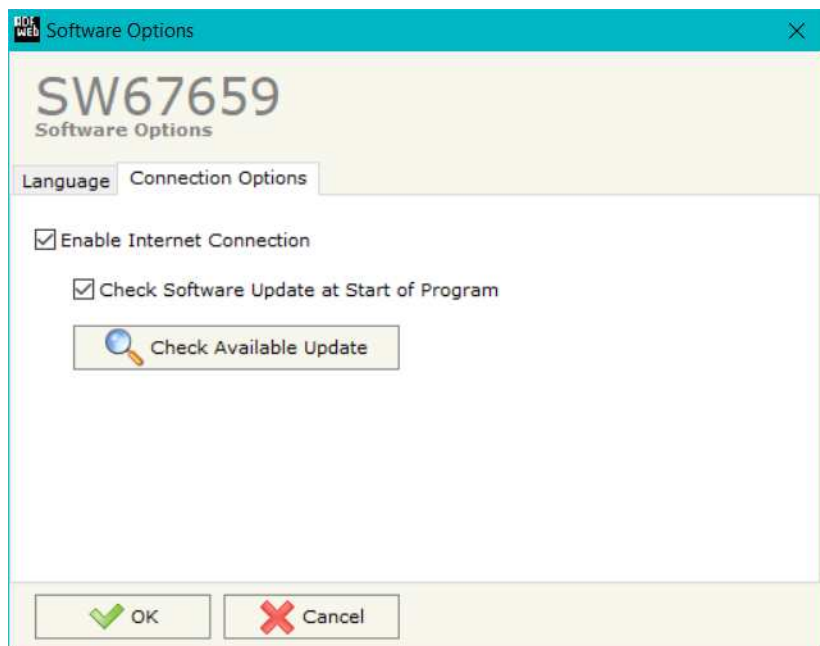
- To clone the configurations of a programmable “PROFINET Slave / Ethernet - Converter” in order to configure another device in the same manner, it is necessary to maintain the folder and all its contents;
- To clone a project in order to obtain a different version of the project, it is sufficient to duplicate the project folder with another name and open the new folder with the button “**Open Configuration**”.



SOFTWARE OPTIONS:

By pressing the “**Settings**” () button there is the possibility to change the language of the software and check the updatings for the compositor.

In the section “Language” it is possible to change the language of the software.



In the section “Connection Options”, it is possible to check if there are some updatings of the software compositor in ADFweb.com website. Checking the option “**Check Software Update at Start of Program**”, the SW67659 check automatically if there are updatings when it is launched.

SET COMMUNICATION:

This section define the fundamental communication parameters of two buses, PROFINET and Ethernet.

By Pressing the **"Set Communication"** button from the main window for SW67659 (Fig. 2) the window "Set Communication" appears (Fig. 3).

The means of the fields for "PROFINET" are:

- In the field **"IP ADDRESS"** the IP address of PROFINET side of the converter is defined;
- In the field **"SUBNET Mask"** the SubNet Mask of PROFINET side of the converter is defined;
- In the field **"GATEWAY"** the default gateway of PROFINET network is defined. This feature can be enabled or disabled pressing the check box. This feature is used for going out of the net;
- In the field **"Port"** the port used for PROFINET communication is defined. The port has a fixed value of 34964;
- In the field **"PROFINET Name of Station"** the name of PROFINET side of the converter is defined;
- In the fields **"PROFINET → Gateway"** the number of input byte of the slave station is defined;
- In the fields **"Gateway → PROFINET"** the number of output byte of the slave station is defined.

The means of the fields for "Ethernet" are:

- In the field **"IP ADDRESS"** the IP address of Ethernet side of the converter is defined;
- In the field **"SUBNET Mask"** the SubNet Mask of Ethernet side of the converter is defined;
- In the field **"GATEWAY"** the default gateway of Ethernet network is defined. This feature can be enabled or disabled pressing the check box. This feature is used for going out of the net;
- In the field **"TCP Port"** the TCP port used to receive the Ethernet commands over TCP is defined;
- In the field **"UDP Port"** the UDP port used to receive the Ethernet commands over UDP is defined.

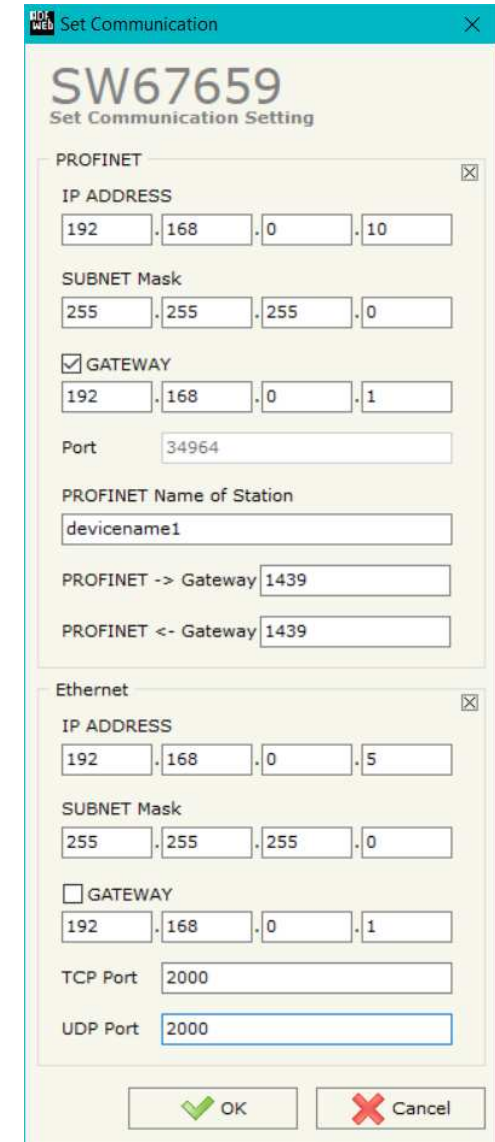


Figure 3: "Set Communication" window

PROFINET XML:

By pressing the "**PROFINET XML**" button it is possible to save the xml file for the PROFINET side.
With this feature you can save the configuration of the converter of the PROFINET side.

Note:

When you import the .xml file on your PROFINET you have to add the main module and all the submodules present in it.

UPDATE DEVICE:

By pressing the “**Update Device**” button, it is possible to load the created Configuration into the device; and also the Firmware, if necessary.

If you don't know the actual IP address of the device you have to use this procedure:

- Turn off the Device;
- Put Dip2 of 'Dip-Switch A' in ON position;
- Turn on the device
- Connect the Ethernet cable;
- Insert the IP “**192.168.2.205**”;
- Press the “**Ping**” button, “Device Found! must appear”;
- Press the “**Next**” button;
- Select which operations you want to do;
- Press the “**Execute update firmware**” button to start the upload;
- When all the operations are “OK” turn off the Device;
- Put Dip2 of 'Dip-Switch A' in OFF position;
- Turn on the device.

If you know the actual IP address of the device, you have to use this procedure:

- Turn on the Device with the Ethernet cable inserted;
- Insert the actual IP of the Converter;
- Press the “**Ping**” button, must appear “Device Found!”;
- Press the “**Next**” button;
- Select which operations you want to do;
- Press the “**Execute update firmware**” button to start the upload;
- When all the operations are “OK” the device automatically goes at Normal Mode.

At this point the configuration/firmware on the device is correctly update.

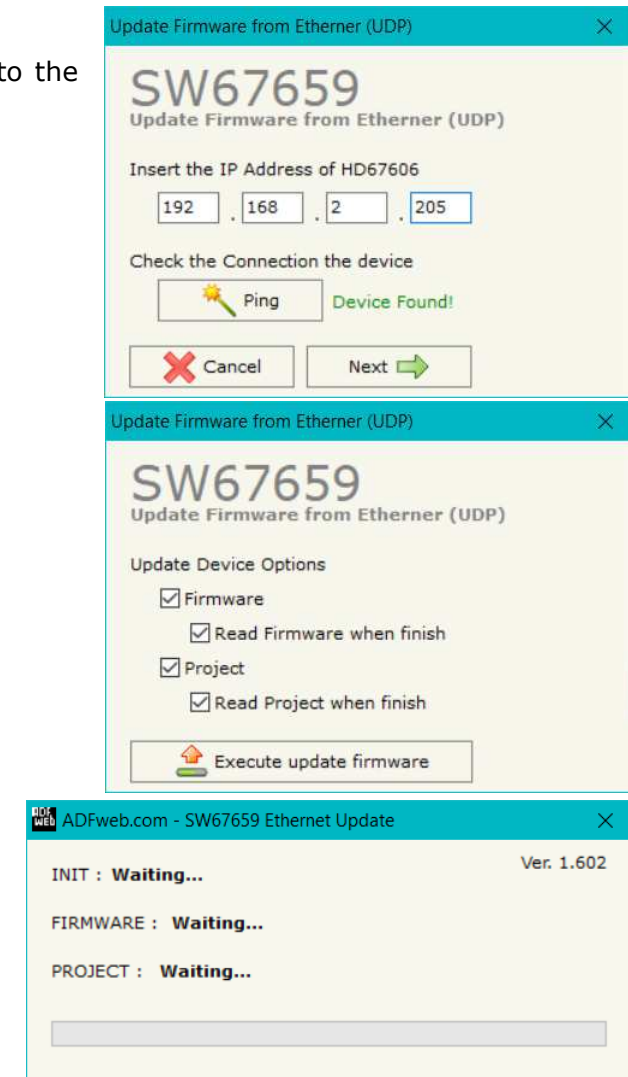


Figure 4: "Update device" windows



Note:

When you install a new version of the software, if it is the first time it is better you do the update of the Firmware in the HD67659 device.



Note:

When you receive the device, for the first time, you also have to update the Firmware in the HD67659 device.



Warning:

If Fig. 5 appears when you try to do the Update try these points before seeking assistance:

- Try to repeat the operations for the updating;
- Try with another PC;
- Try to restart the PC;
- Check the LAN settings;
- Check the Wi-Fi settings;
- If you are using the program inside a Virtual Machine, try to use in the main Operating System;
- If you are using Windows Seven, Vista, 8 or 10 make sure that you have the administrator privileges;
- In case you have to program more than one device, using the "UDP Update", you have to cancel the ARP table every time you connect a new device on Ethernet. For do this you have to launch the "Command Prompt" and write the command "arp -d". Pay attention that with Windows Vista, Seven, 8, 10 you have to launch the "Command Prompt" with Administrator Rights;
- Pay attention at Firewall lock.

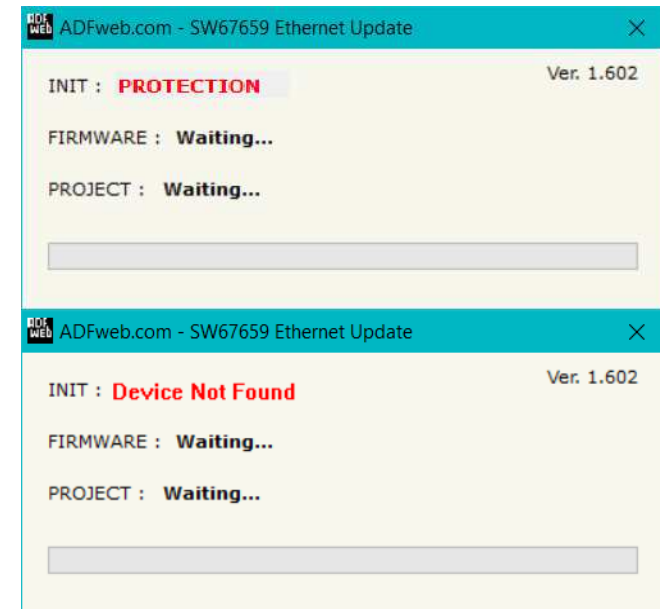


Figure 5: Error windows



In the case of HD67659 you have to use the software "SW67659": www.adfweb.com/download/filefold/SW67659.zip.

ETHERNET PROTOCOL:

In order to read and write the data from PROFINET side, it is enough to send some simple commands over TCP or UDP.

Reading data from HD67659 (PROFINET → Ethernet)

Request:

| Byte Number | Description |
|-------------|-------------|
| 1 | 'R' (0x52) |
| 2 | ':' (0x2E) |

Response:

| Byte Number | Description |
|-------------|--|
| 1 | 'D' (0x44) |
| 2 | ':' (0x3A) |
| 3÷n+2 | Input byte of PROFINET (two chars for each byte) |

*n=number of Input bytes defined in the Compositor

Writing data to HD67659 (Ethernet → PROFINET)

Request:

| Byte Number | Description |
|-------------|---|
| 1 | 'W' (0x57) |
| 2 | ',' (0x2E) |
| 3÷5 | Starting output byte to write (decimal) |
| 6 | '' (0x20) |
| 7÷9 | Number of bytes to write (decimal) |
| 10 | '' (0x20) |
| 10÷n+9 | Data to write (hex) |

*n=number of bytes defined in bytes 3-4-5 of the command

Response:

| Byte Number | Description |
|-------------|---|
| 1 | 'D' (0x44) |
| 2 | ':' (0x3A) |
| 3÷n+2 | Output byte of PROFINET (two chars for each byte) |

*n=number of Input bytes defined in the Compositor



Note:

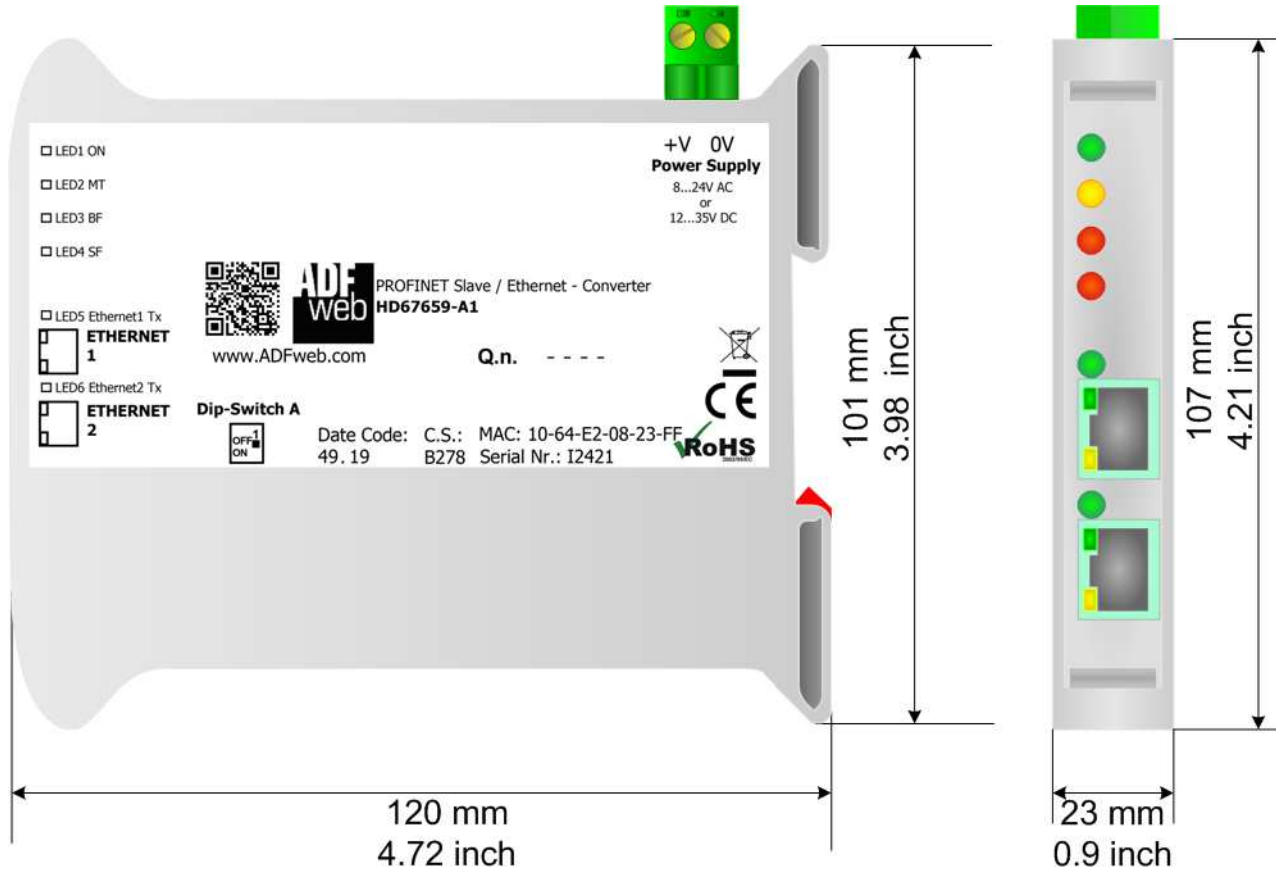
It is possible to write up to 512 bytes with a single command.



Note:

It is possible to use TCP and UDP for sending the commands. It is necessary to use the ports defined in the section "Set Communication" of SW67659.

MECHANICAL DIMENSIONS:



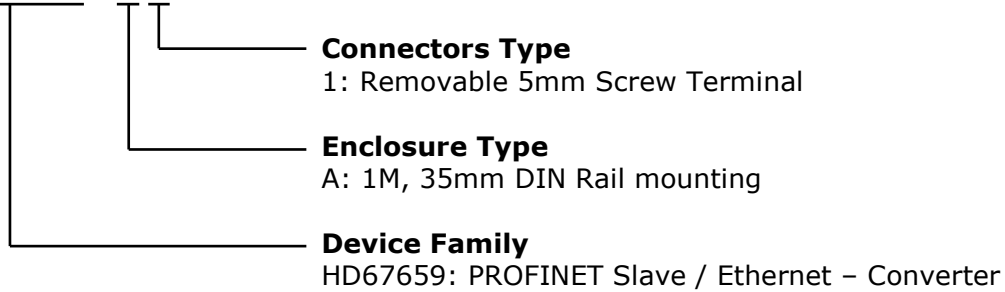
Housing: PVC
Weight: 200g (Approx)

Figure 6: Mechanical dimensions scheme for HD67659-A1

ORDERING INFORMATIONS:

The ordering part number is formed by a valid combination of the following:

HD67659 - A 1



Order Code: **HD67659-A1** - PROFINET Slave / Ethernet - Converter

ACCESSORIES:

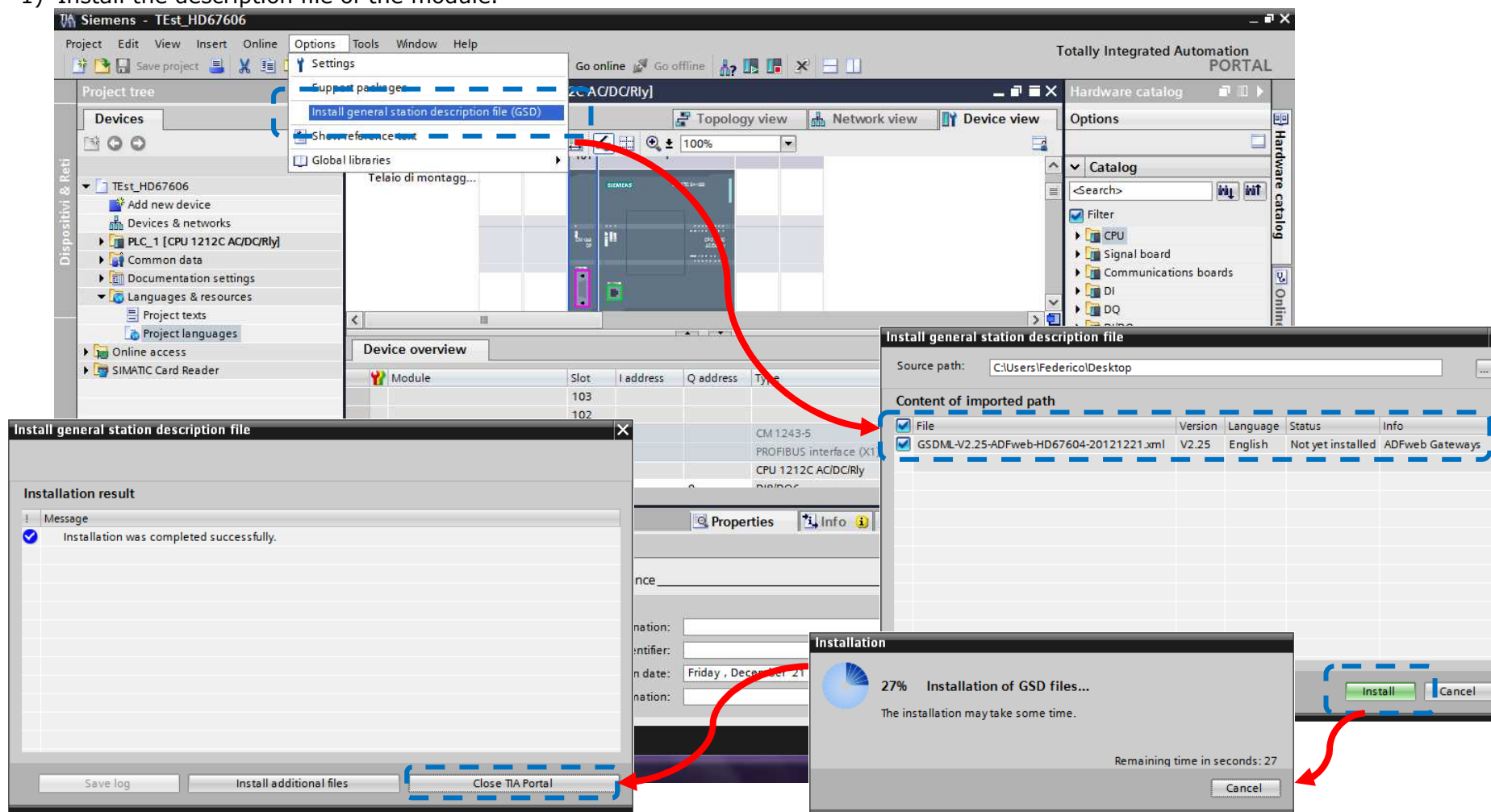
Order Code: **AC34011** - 35mm Rail DIN - Power Supply 220/240V AC 50/60Hz – 12 V DC

Order Code: **AC34012** - 35mm Rail DIN - Power Supply 220/240V AC 50/60Hz – 24 V DC

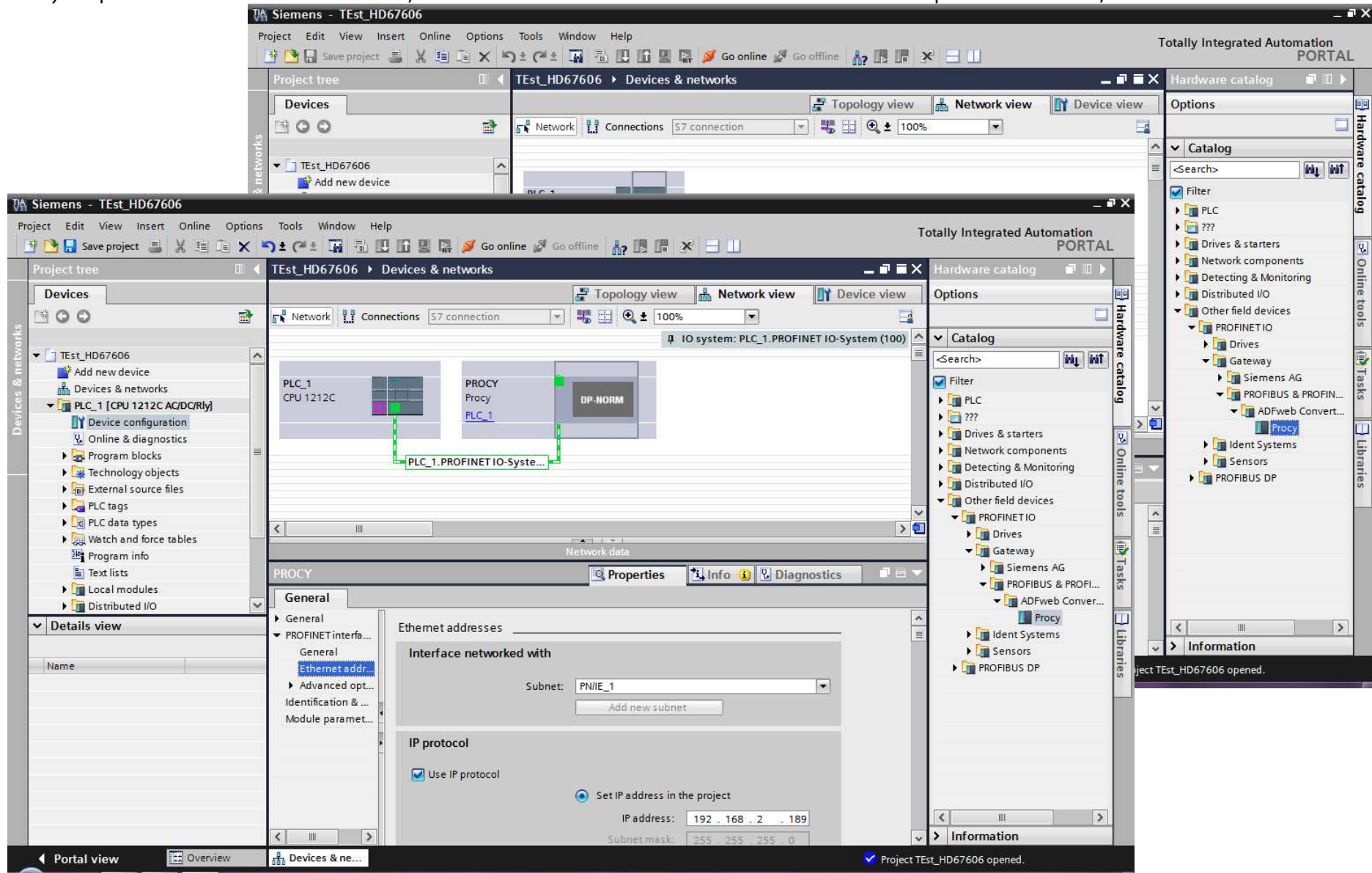
PLC CONFIGURATION:

The configuration and commissioning of the PROFINET Converter as described on the following pages was accomplished with the help of the TIA Portal software of Siemens. In case of using a control system from another supplier please attend to the associated documentation. These are the steps to follow:

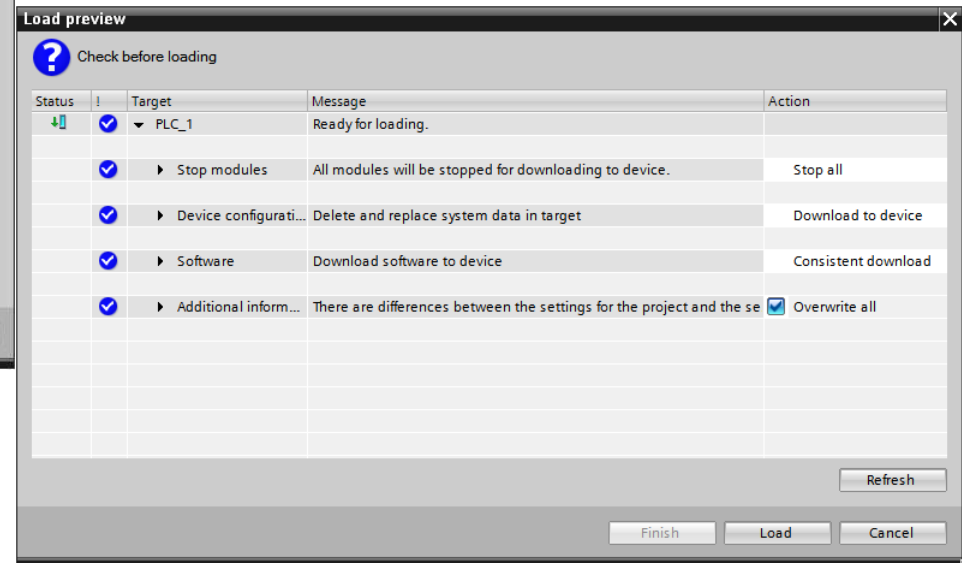
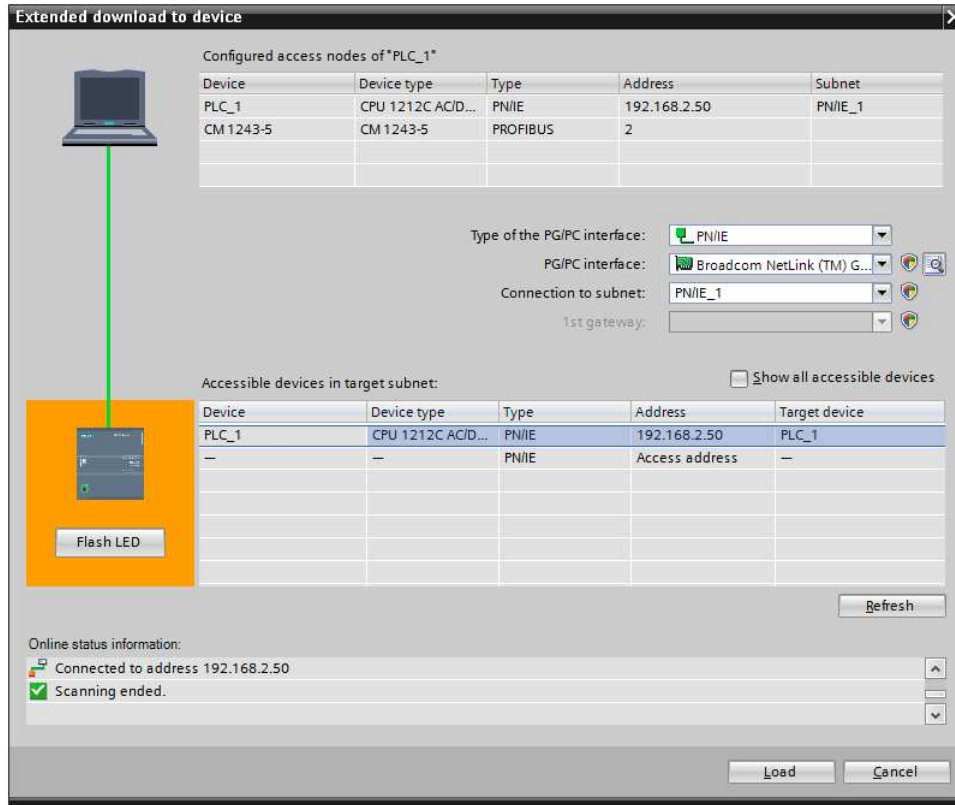
- 1) Install the description file of the module.



2) Import the module in the network; connect the device to the PLC network and edit the parameters of IP, station name etc.



3) Load the configuration into the PLC.



DISCLAIMER:

All technical content within this document can be modified without notice. The content of the document is a under continual renewal. For losses due to fire, earthquake, third party access or other accidents, or intentional or accidental abuse, misuse, or use under abnormal conditions repairs are charged to the user. ADFweb.com S.r.l. will not be liable for accidental loss of use or inability to use this product, such as loss of business income. ADFweb.com S.r.l. shall not be liable for consequences of improper use.

OTHER REGULATIONS AND STANDARDS:**WEEE INFORMATION**

Disposal of old electrical and electronic equipment (as in the European Union and other European countries with separate collection systems).

— This symbol on the product or on its packaging indicates that this product may not be treated as household rubbish. Instead, it should be taken to an applicable collection point for the recycling of electrical and electronic equipment. If the product is disposed correctly, you will help prevent potential negative environmental factors and impact of human health, which could otherwise be caused by inappropriate disposal. The recycling of materials will help to conserve natural resources. For more information about recycling this product, please contact your local city office, your household waste disposal service or the shop where you purchased the product.

RESTRICTION OF HAZARDOUS SUBSTANCES DIRECTIVE

The device respects the 2002/95/EC Directive on the restriction of the use of certain hazardous substances in electrical and electronic equipment (commonly referred to as Restriction of Hazardous Substances Directive or RoHS).

CE MARKING

The product conforms with the essential requirements of the applicable EC directives.

WARRANTIES AND TECHNICAL SUPPORT:

For fast and easy technical support for your ADFweb.com SRL products, consult our internet support at www.adfweb.com.
Otherwise contact us at the address support@adfweb.com

RETURN POLICY:

If while using your product you have any problem and you wish to exchange or repair it, please do the following:

- ➔ Obtain a Product Return Number (PRN) from our internet support at www.adfweb.com. Together with the request, you need to provide detailed information about the problem.
- ➔ Send the product to the address provided with the PRN, having prepaid the shipping costs (shipment costs billed to us will not be accepted).

If the product is within the warranty of twelve months, it will be repaired or exchanged and returned within three weeks. If the product is no longer under warranty, you will receive a repair estimate.



ADFweb.com S.r.l.
Via Strada Nuova, 17
IT-31010 Mareno di Piave
TREVISO (Italy)
Phone +39.0438.30.91.31
Fax +39.0438.49.20.99
www.adfweb.com

