

User Manual

Revision 1.020
English

Ethernet/IP / J1939 - Converter

(Order Code: HD67599-A1)

For Website information:

www.adfweb.com?Product=HD67599

For Price information:

www.adfweb.com?Price=HD67599-A1

Benefits and Main Features:

- ⊕ Very easy to configure
- ⊕ Two EtherNet/IP ports
- ⊕ Temperature range: -40°C/85°C (-40°F/185°F)



For others Ethernet/IP products see also the following link:

Converter EtherNet/IP to

- www.adfweb.com?Product=HD67077
- www.adfweb.com?Product=HD67595
- www.adfweb.com?Product=HD67597
- www.adfweb.com?Product=HD67598
- www.adfweb.com?Product=HD67589
- www.adfweb.com?Product=HD67590
- www.adfweb.com?Product=HD67590
- www.adfweb.com?Product=HD67591
- www.adfweb.com?Product=HD67591
- www.adfweb.com?Product=HD67592
- www.adfweb.com?Product=HD67592

- (M-Bus)**
- (CAN)**
- (DeviceNet Master)**
- (DeviceNet Slave)**
- (NMEA2000)**
- (Serial RS232)**
- (Serial RS485)**
- (Modbus Master RS232)**
- (Modbus Master RS485)**
- (Modbus Slave RS232)**
- (Modbus Slave RS485)**

Do you have your customer protocol? Then go to:

www.adfweb.com?Product=HD67003

Do you need to choose a device? Do you want help?

www.adfweb.com?Cmd=helpme



User Manual

INDEX:

	Page
INDEX	2
UPDATED DOCUMENTATION	2
REVISION LIST	2
WARNING	2
TRADEMARKS	2
SECURITY ALERT	3
EXAMPLES OF CONNECTION	4
CONNECTION SCHEME	5
CHARACTERISTICS	6
CONFIGURATION	6
POWER SUPPLY	7
FUNCTION MODES	8
LEDS	9
ETHERNET/IP	10
J1939	10
USE OF COMPOSITOR SW67599	11
NEW PROJECT / OPEN PROJECT	11
SET COMMUNICATION	12
RECEIVE FRAMES	13
SEND FRAMES	14
UPDATE DEVICE	15
MECHANICAL DIMENSIONS	17
ORDERING INFORMATIONS	18
ACCESSORIES	18
PLC CONFIGURATION	19
DISCLAIMER	23
OTHER REGULATIONS AND STANDARDS	23
WARRANTIES AND TECHNICAL SUPPORT	24
RETURN POLICY	24
PRODUCTS AND RELATED DOCUMENTS	24

UPDATED DOCUMENTATION:

Dear customer, we thank you for your attention and we remind you that you need to check that the following document is:

- ✚ Updated
- ✚ Related to the product you own

To obtain the most recently updated document, note the “document code” that appears at the top right-hand corner of each page of this document.

With this “Document Code” go to web page www.adfweb.com/download/ and search for the corresponding code on the page. Click on the proper “Document Code” and download the updates.

REVISION LIST:

Revision	Date	Author	Chapter	Description
1.000	21/06/2012	Fl	All	First release version
1.010	12/12/2012	Fl	All	Software changed (v1.000)
1.011	09/01/2013	Nt	All	Added new chapters
1.020	04/06/2015	Fl	All	Software changed (v1.102)

WARNING:

ADFweb.com reserves the right to change information in this manual about our product without warning. ADFweb.com is not responsible for any error this manual may contain.

TRADEMARKS:

All trademarks mentioned in this document belong to their respective owners.

SECURITY ALERT:**GENERAL INFORMATION**

To ensure safe operation, the device must be operated according to the instructions in the manual. When using the device, legal and safety regulation are required for each individual application. The same applies also when using accessories.

INTENDED USE

Machines and systems must be designed so the faulty conditions do not lead to a dangerous situation for the operator (i.e. independent limit switches, mechanical interlocks, etc.).

QUALIFIED PERSONNEL

The device can be used only by qualified personnel, strictly in accordance with the specifications. Qualified personnel are persons who are familiar with the installation, assembly, commissioning and operation of this equipment and who have appropriate qualifications for their job.

RESIDUAL RISKS

The device is state-of-the-art and is safe. The instruments can represent a potential hazard if they are inappropriately installed and operated by untrained personnel. These instructions refer to residual risks with the following symbol:

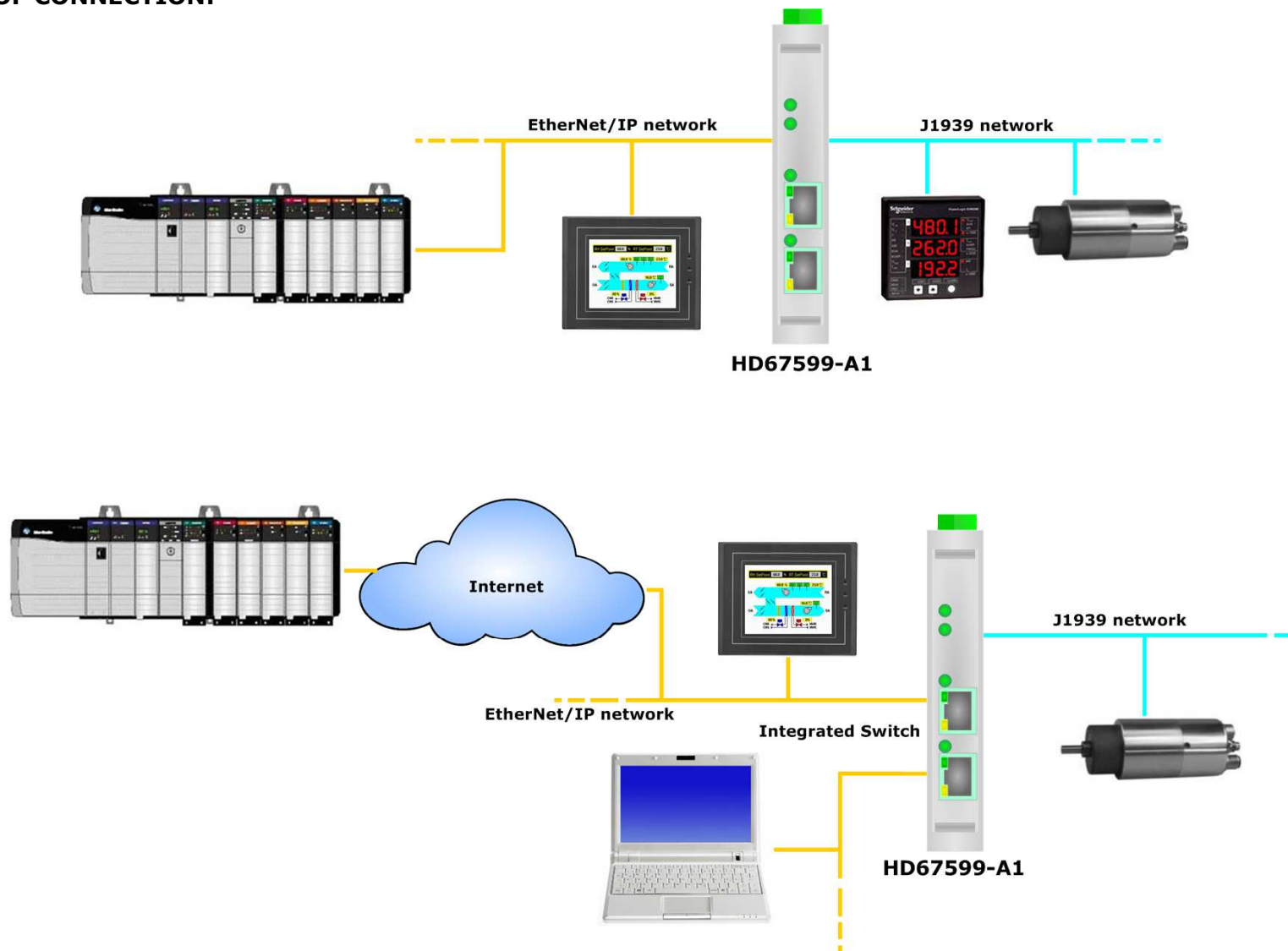


This symbol indicates that non-observance of the safety instructions is a danger for people that could lead to serious injury or death and / or the possibility of damage.

CE CONFORMITY

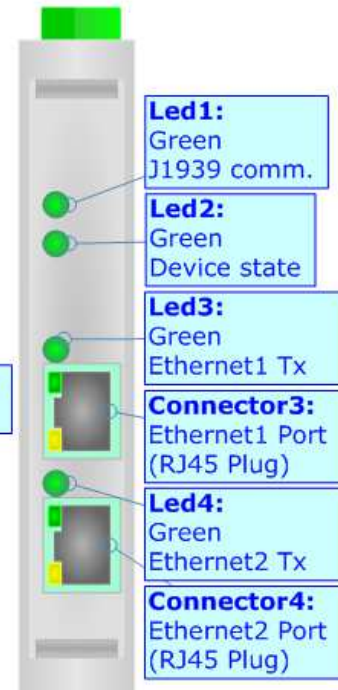
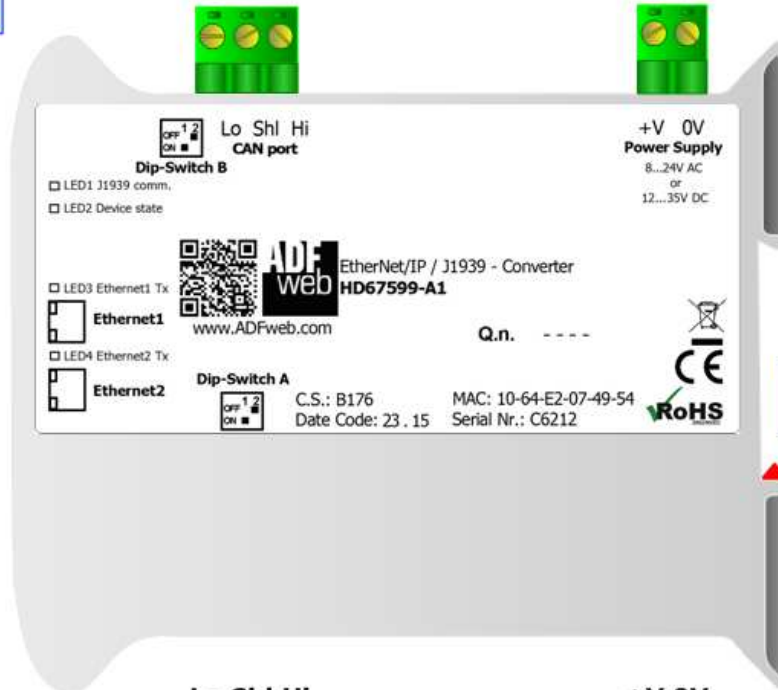
The declaration is made by our company. You can send an email to support@adfweb.com or give us a call if you need it.

EXAMPLES OF CONNECTION:



CONNECTION SCHEME:

Dip-Switch A:
 -Dip1 – Must be at ON
 -Dip2 – Functioning Mode
 = Normal = Boot



Led1:
Green
J1939 comm.

Led2:
Green
Device state

Led3:
Green
Ethernet1 Tx

Connector3:
Ethernet1 Port
(RJ45 Plug)

Led4:
Green
Ethernet2 Tx

Connector4:
Ethernet2 Port
(RJ45 Plug)

Rail DIN Clamp



Dip-Switch B:
 -Dip1 – J1939 Termination Resistor
 -Dip2 – Not used
 = Open = 120 Ohm

Connector2:
 J1939 port (Isolated port)
 Hi = High wire
 Shl = Shield* (to Isolated Ground)
 Lo = Low wire

Connector1:
 Power Supply port
 0V = Ground
 +V = Positive wire
 V AC: min 8V ; max 24V
 V DC: min 12V ; max 35V

Figure 1: Connection scheme for HD67599-A1

CHARACTERISTICS:

The HD67599-A1 is a EtherNet/IP / J1939 Converter.

It allows the following characteristics:

- Up to 500 bytes in reading and 500 bytes in writing;
- Triple isolation between J1939 - Power Supply, J1939 - Ethernet, Ethernet - Power Supply;
- Two-directional information between J1939 bus and EtherNet/IP bus;
- Mountable on 35mm Rail DIN;
- Wide power supply input range: 8...24V AC or 12...35V DC;
- Wide temperature range: -40°C / 85°C [-40°F / +185°F].

CONFIGURATION:

You need Compositor SW67599 software on your PC in order to perform the following:

- Define the parameter of EtherNet/IP line;
- Define the parameter of J1939 line;
- Determinate which EtherNet/IP byte transfer in J1939 and vice versa;
- Update the device.

POWER SUPPLY:

The devices can be powered at 8...24V AC and 12...35V DC. For more details see the two tables below.

VAC		VDC	
Vmin	Vmax	Vmin	Vmax
8V	24V	12V	35V

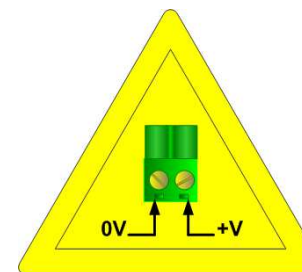
Consumption at 24V DC:

Device	Consumption [W/VA]
HD67599-A1	3.5

Connector1:
 Power Supply port
 0V = Ground
 +V = Positive wire
 V AC: min 8V ; max 24V
 V DC: min 12V ; max 35V



Caution: Not reverse the polarity power



HD67599-A1

FUNCTION MODES:

The device has got two functions mode depending of the position of the 'Dip2 of Dip-Switch A':

- The first, with 'Dip2 of Dip-Switch A' at "OFF" position, is used for the normal working of the device.
- The second, with 'Dip2 of Dip-Switch A' at "ON" position, is used for upload the Project and/or Firmware.

For the operations to follow for the updating, see 'UPDATE DEVICE' section.

According to the functioning mode, the LEDs will have specifics functions, see 'LEDS' section.

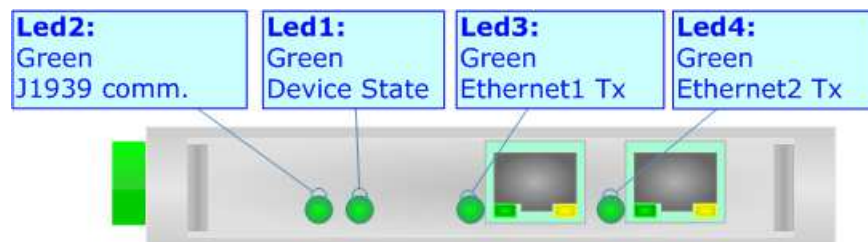
**Warning:**

Dip1 of 'Dip-Switch A' must be at ON position to work even if the Ethernet cable is not inserted.

LEDS:

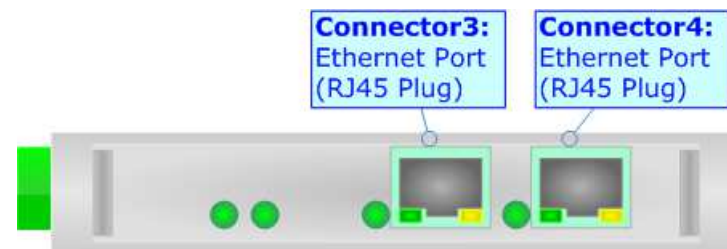
The device has got four LEDs that are used to give information of the functioning status. The various meanings of the LEDs are described in the table below.

LED	Normal Mode	Boot Mode
1: J1939 comm. (green)	Blinks quickly for a short time when receive a J1939 frame defined in the "Receive Frames" section of Compositor	Blinks quickly: Boot state Blinks very slowly (~0.5Hz): update in progress
2: Device State (green)	Blinks slowly (~1Hz)	Blinks quickly: Boot state Blinks very slowly (~0.5Hz): update in progress
3: Ethernet1 Tx (green)	Blinks quickly for a short time when sends Ethernet frames	Blinks quickly: Boot state Blinks very slowly (~0.5Hz): update in progress
4: Ethernet2 Tx (green)	Blinks quickly for a short time when sends Ethernet frames	Blinks quickly: Boot state Blinks very slowly (~0.5Hz): update in progress



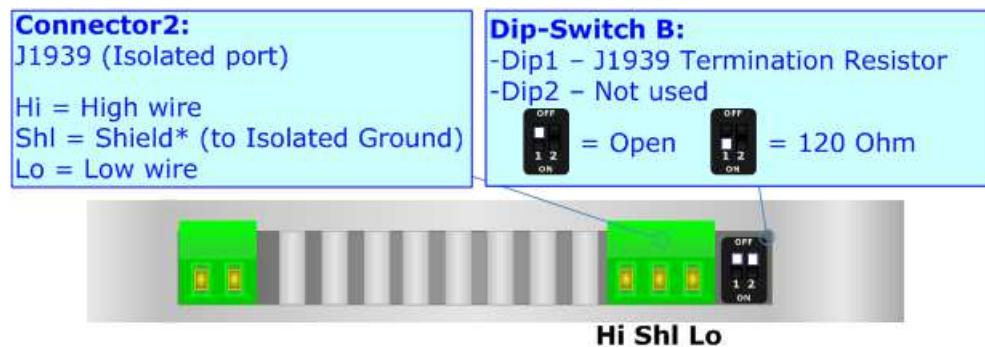
ETHERNET/IP:

The EtherNet/IP connection must be made using Connector3 and/or Connector4 of HD67599-A1 with at least a Category 5E cable. The maximum length of the cable should not exceed 100m. The cable has to conform to the T568 norms relative to connections in cat.5 up to 100 Mbps. To connect the device to an Hub/Switch is recommended the use of a straight cable, to connect the device to a PC/PLC/other is recommended the use of a cross cable.



J1939:

To terminate the J1939 line with a 120Ω resistor it is necessary that the Dip1 of 'Dip-Switch B' is at ON position (like in figure).



Cable characteristics:

DC parameter:	Impedance	70 Ohm/m
AC parameters:	Impedance	120 Ohm/m
	Delay	5 ns/m
Length	Baud Rate [bps]	Length MAX [m]
	125 K	500
	250 K	250
	500 K	100

USE OF COMPOSITOR SW67599:

To configure the Converter, use the available software that runs with Windows called SW67599. It is downloadable on the site www.adfweb.com and its operation is described in this document. (This manual is referenced to the last version of the software present on our web site). The software works with MSWindows (XP, Vista, Seven, 8; 32/64bit).

When launching the SW67599, the right window appears (Fig. 2).

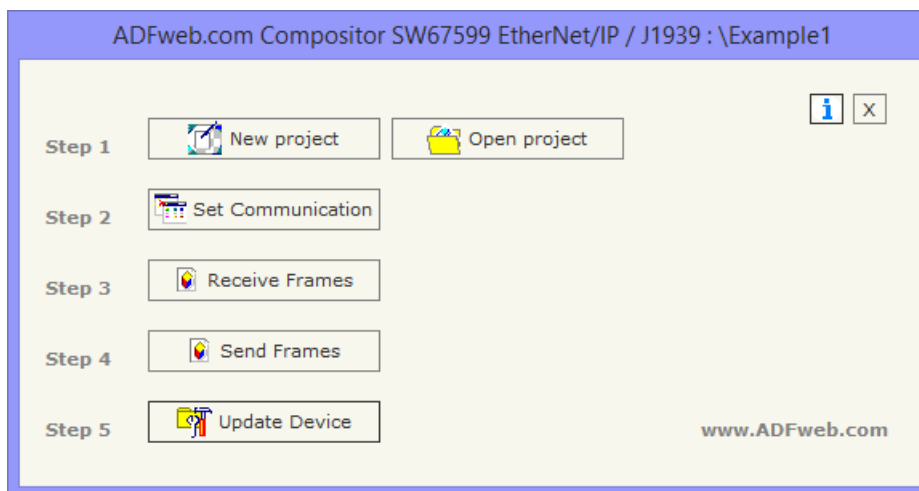
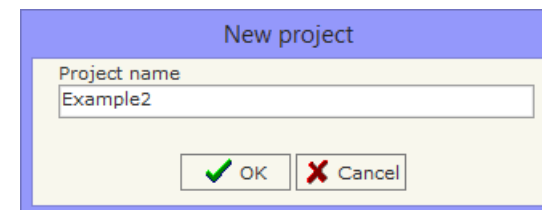
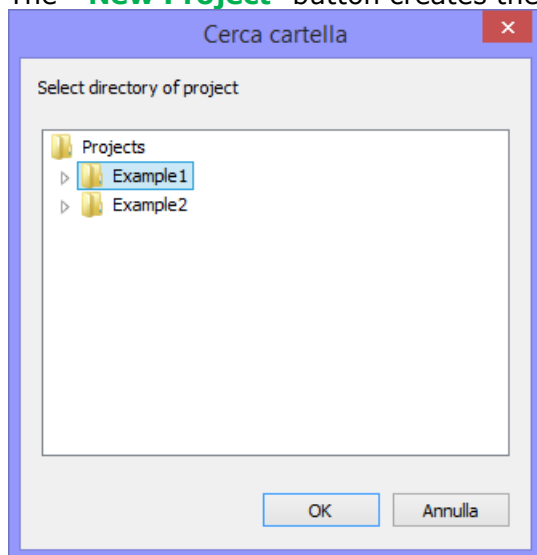


Figure 2: Main window for SW67599

NEW PROJECT / OPEN PROJECT:

The **“New Project”** button creates the folder which contains the entire device’s configuration.



A device configuration can also be imported or exported:

- ➔ To clone the configurations of a programmable “EtherNet/IP / J1939 – Converter” in order to configure another device in the same manner, it is necessary to maintain the folder and all its contents;
- ➔ To clone a project in order to obtain a different version of the project, it is sufficient to duplicate the project folder with another name and open the new folder with the button **“Open Project”**.

SET COMMUNICATION:

This section define the fundamental communication parameters of two buses, EtherNet/IP and J1939.

By Pressing the **"Set Communication"** button from the main window for SW67599 (Fig. 2) the window "Set Communication" appears (Fig. 3).

The window is divided in two sections, one for the EtherNet/IP and the other for the J1939.

The means of the fields for the "J1939" section are:

- In the field **"Baud Rate"** the velocity of the J1939 bus is defined;
- In the field **"TimeOut Data"** insert a time; when this time is elapsed and the data isn't reliable, in the EtherNet/IP data array you read "0". It is possible to use this function only for the "Receive Frames";
- If the field **"Enable Peer to Peer"** is checked, the Converter accepts all the ID that have the PGN inserted in the "Receive Frames" section.

The means of the fields for "EtherNet/IP" are:

- In the fields **"IP ADDRESS"** insert the IP address that you want to give to the Converter;
- In the fields **"SUBNET Mask"** insert the SubNet Mask;
- In the fields **"GATEWAY"** insert the default gateway that you want to use. This feature can be enabled or disabled pressing the Check Box field;
- In the field **"Port"** the port used for EtherNet/IP communication is defined. The port has a fixed value of 44818;
- In the field **"Number Byte Input"** the number of byte from the EtherNet/IP to the Converter is defined (at maximum it is possible to use 500 byte);
- In the field **"Number Byte Output"** the number of byte from the Converter to the EtherNet/IP is defined (at maximum it is possible to use 500 byte).

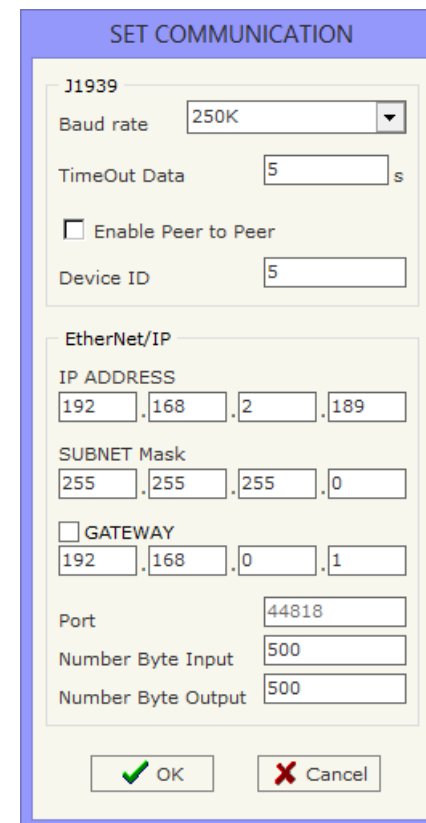


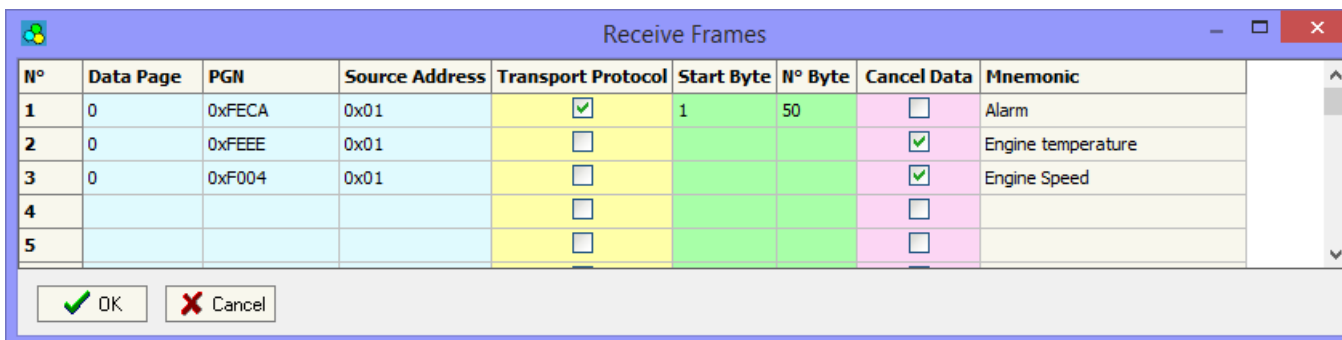
Figure 3: "Set Communication" window

RECEIVE FRAMES:

By pressing the "Receive Frames" button from the main window for SW67599 (Fig. 2) the "Receive Frames" window appears (Fig. 4).

The data of the columns have the following meanings:

- In the field "Data Page" insert the data page pf J1939 frame, the value is 0 or 1 (usually is 0);
- In the field "PGN" insert the PGN of the data you would like to read from EtherNet/IP to J1939 (it is an identifier);
- In the field "Source Address" insert the address of the device that sends the frame;
- If the field "Transport Protocol" is checked the frame use transport protocol functions;
- In the field "Start Byte" insert the byte which you would start read, this field is enable only when the field Transport Protocol is checked;
- In the field "N° Byte" insert the number of byte you would read, for example your start byte is 20 an N°byte is 10, you can read the byte from 20 to 30;
- If the field "Cancel Data" is checked, the data in the frame will be erased after the expiration of the "TimeOut Data" defined in "Set Communication" section;
- In the field "Mnemonic" the description for the frame is defined.



N°	Data Page	PGN	Source Address	Transport Protocol	Start Byte	N° Byte	Cancel Data	Mnemonic
1	0	0xFECA	0x01	<input checked="" type="checkbox"/>	1	50	<input type="checkbox"/>	Alarm
2	0	0xFEEE	0x01	<input type="checkbox"/>			<input checked="" type="checkbox"/>	Engine temperature
3	0	0xF004	0x01	<input type="checkbox"/>			<input checked="" type="checkbox"/>	Engine Speed
4				<input type="checkbox"/>			<input type="checkbox"/>	
5				<input type="checkbox"/>			<input type="checkbox"/>	

Figure 4: "Receive Frames" window



Note:

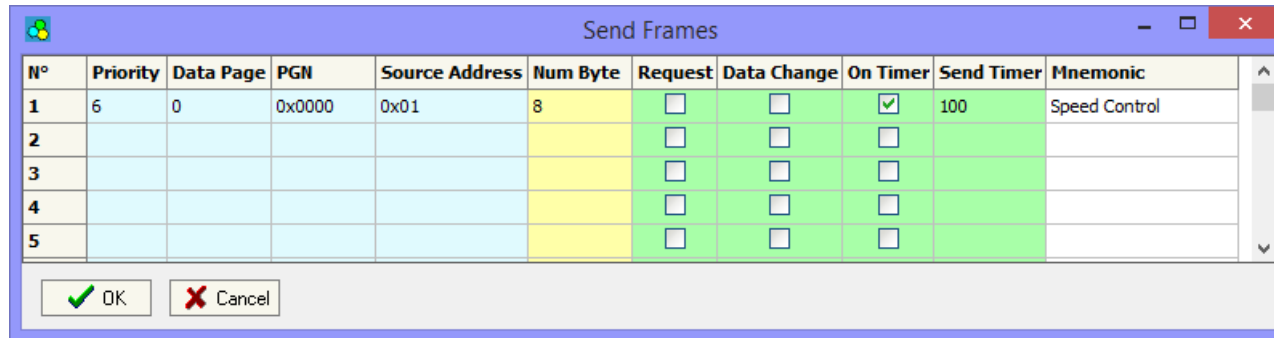
It is possible to configure a maximum of 62 frames in the "Receive Frames" section.

SEND FRAMES:

By pressing the **Send Frames** button from the main window for SW67595 (Fig. 2) the "Send frames" window appears (Fig. 5).

The data of the columns have the following meanings:

- In the field **Priority** insert the priority of the Frame: in J1939 protocol it is a number among 0,1,2,3,4,5,6,7. The number "0" is the highest priority and "7" is the lowest;
- In the field **Data Page** insert the data page, the value is 0 or 1 (usually is 0);
- In the field **PGN** insert the PGN of the data you would like to write from EtherNet/IP to J1939 (in J1939 protocol the PGN is an identifier);
- In the field **Source Address** insert the address of the device that sends the frame;
- In the field **Num Byte** insert the dimension of the PGN (number of bytes). If it is bigger than 8, the Transport Protocol will be used;
- If the option **Request** is checked, the PGN is transmitted when a J1939 request is sent (On Request);
- If the option **Data Change** is checked, the PGN is transmitted when the data of the PGN changes;
- If the option **On Timer** is checked, the PGN is transmitted cyclically;
- In the field **Send Timer** insert the interval used for the **Send Frame Type → On Timer**. The time is in milliseconds;
- In the field **Mnemonic** the description for the frame is defined.



N°	Priority	Data Page	PGN	Source Address	Num Byte	Request	Data Change	On Timer	Send Timer	Mnemonic
1	6	0	0x0000	0x01	8	<input type="checkbox"/>	<input type="checkbox"/>	<input checked="" type="checkbox"/>	100	Speed Control
2						<input type="checkbox"/>	<input type="checkbox"/>	<input type="checkbox"/>		
3						<input type="checkbox"/>	<input type="checkbox"/>	<input type="checkbox"/>		
4						<input type="checkbox"/>	<input type="checkbox"/>	<input type="checkbox"/>		
5						<input type="checkbox"/>	<input type="checkbox"/>	<input type="checkbox"/>		

Figure 5: "Send Frames" window



Note:

It is possible to configure a maximum of 62 frames in the "Send Frames" section.

UPDATE DEVICE:

By pressing the **"Update Device"** button, it is possible to load the created Configuration into the device; and also the Firmware, if necessary.

If you don't know the actual IP address of the device you have to use this procedure:

- Turn off the Device;
- Put Dip2 of 'Dip-Switch A' at ON position;
- Turn on the device
- Connect the Ethernet cable;
- Insert the IP **"192.168.2.205"**;
- Press the **"Ping"** button, must appear **"Device Found!"**;
- Press the **"Next"** button;
- Select which operations you want to do;
- Press the **"Execute update firmware"** button to start the upload;
- When all the operations are **"OK"** turn off the Device;
- Put Dip2 of 'Dip-Switch A' at OFF position;
- Turn on the device.

At this point the configuration/firmware on the device is correctly updated.

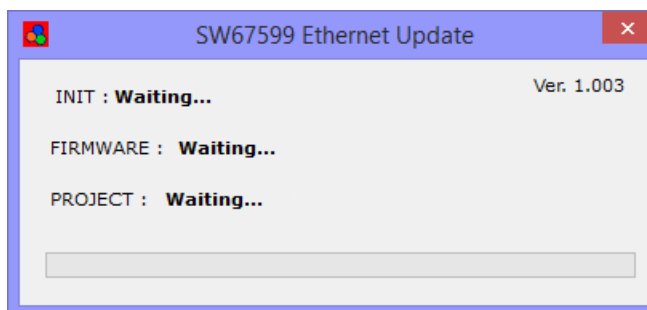
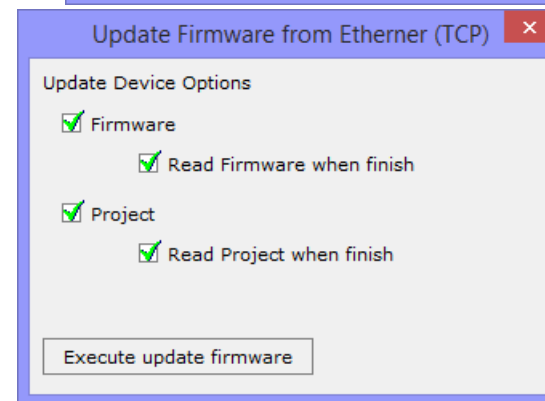
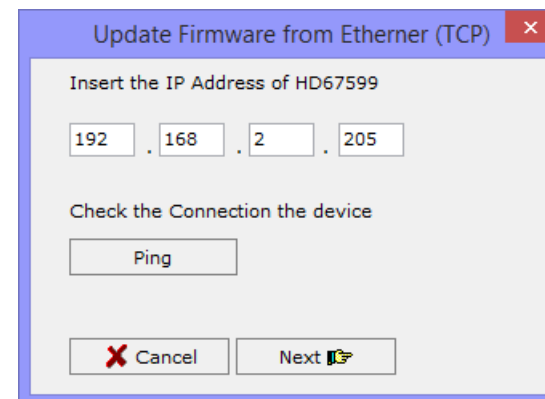


Figure 6: "Update device" windows

If you know the actual IP address of the device you have to use this procedure:

- Turn on the Device with the Ethernet cable inserted;
- Insert the actual IP of the Converter;
- Press the "**Ping**" button, must appear "Device Found!";
- Press the "**Next**" button;
- Select which operations you want to do;
- Press the "**Execute update firmware**" button to start the upload;
- When all the operations are "OK" the device automatically goes at Normal Mode.

At this point the configuration/firmware on the device is correctly updated.



Note:

When you install a new version of the software it is better if the first time you do the update of the Firmware in the HD67599-A1 device.



Note:

When you receive the device, for the first time, you have to update also the Firmware in the HD67599-A1 device.



Warning:

If the Fig. 7 appears when you try to do the Update try these points before seeking assistance:

- Try to repeat the operations for the update;
- Try with another PC;
- Try to restart the PC;
- If you are using the program inside a Virtual Machine, try to use in the main Operating System;
- If you are using Windows Seven or Vista or 8, make sure that you have the administrator privileges;
- Take attention at Firewall lock;
- Check the LAN settings.



In the case of HD67599-A1 you have to use the software "SW67599": www.adfweb.com/download/filefold/SW67599.zip.

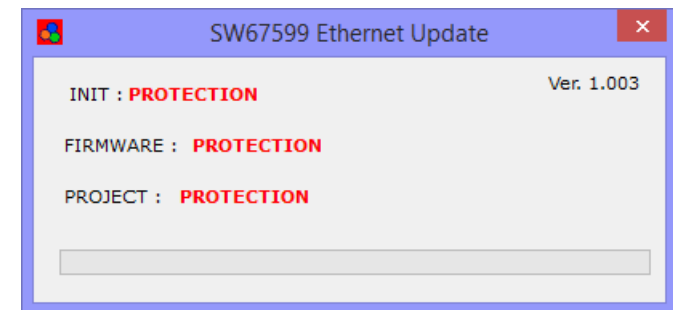
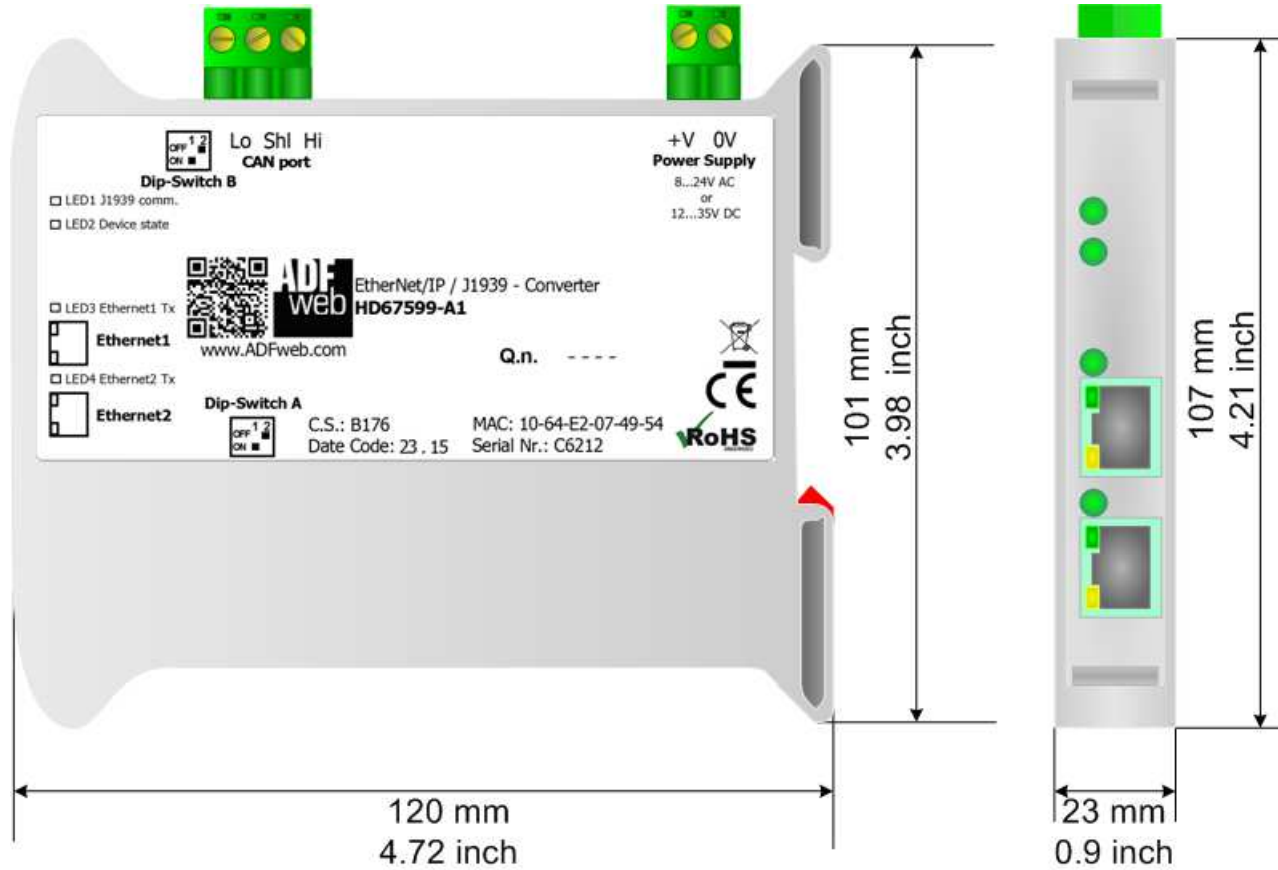


Figure 7: "Protection" window

MECHANICAL DIMENSIONS:



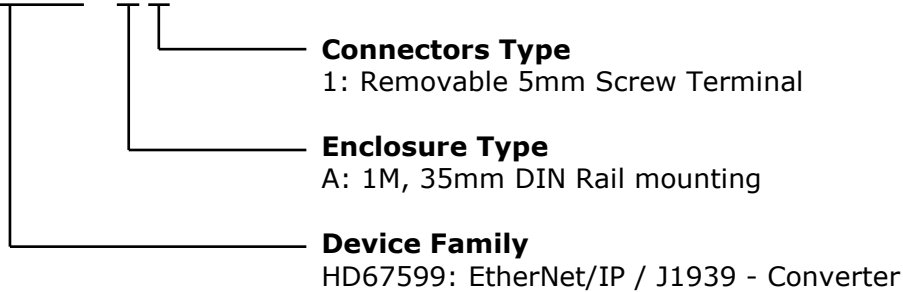
Housing: PVC
Weight: 200g (Approx)

Figure 8: Mechanical dimensions scheme for HD67599-A1

ORDERING INFORMATIONS:

The ordering part number is formed by a valid combination of the following:

HD67599 - A 1



Order Code: **HD670599-A1** - EtherNet/IP / J1939 - Converter

ACCESSORIES:

Order Code: **AC34001** - 35mm Rail DIN - Power Supply 220/240V AC 50/60Hz – 12 V AC

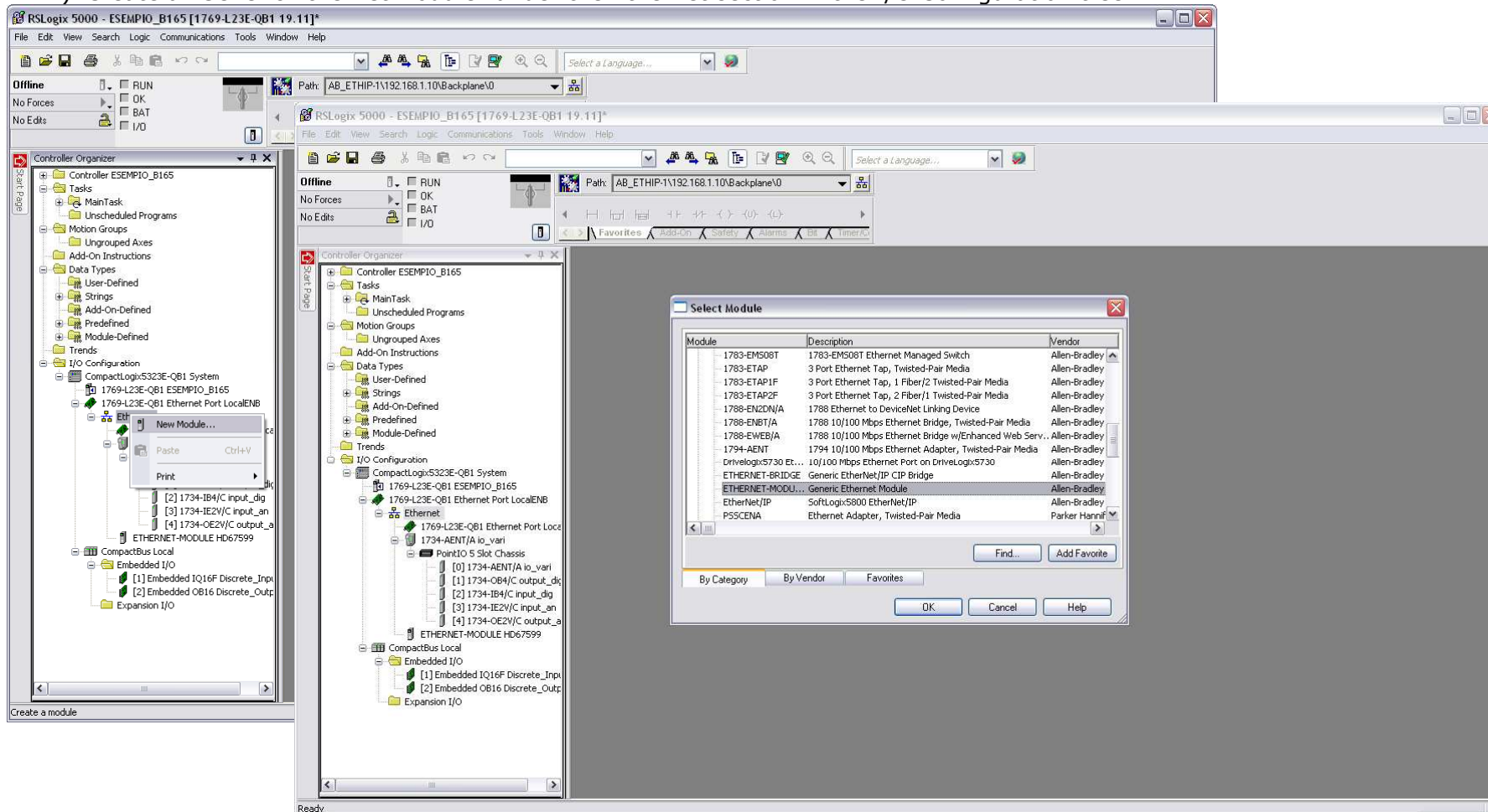
Order Code: **AC34002** - 35mm Rail DIN - Power Supply 110V AC 50/60Hz – 12 V AC

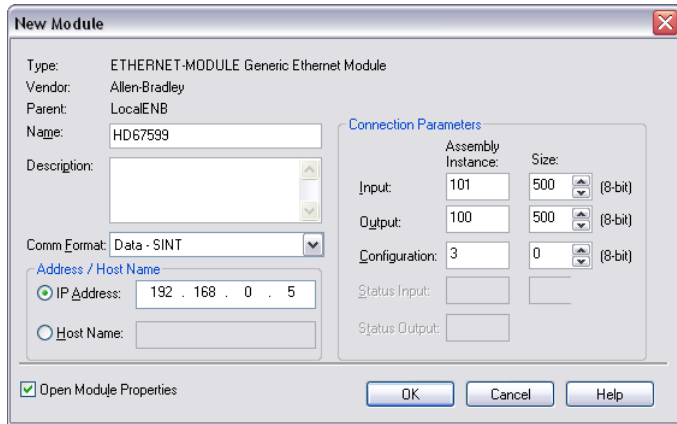
PLC CONFIGURATION:

The configuration and commissioning of the EtherNet/IP Converter as described on the following pages was accomplished with the help of the "RSLogix 5000" software of Rockwell Automation. In case of using a control system from another supplier please attend to the associated documentation.

These are the steps to follow:

- 1) Create a "Generic Ethernet Module" under the Ethernet section in the I/O Configuration tree.





2) Edit the settings of the new Generic Ethernet Module. As shown in the screen shot below, the module was named "HD67599" and the IP-address assigned is 192.168.0.5.

For the Comm Format "Data - SINT" shall be selected as the data type.

The HD67599-A1 can uses up to 500 bytes for input assembly instance 101 and 500 bytes for output assembly instance 100.

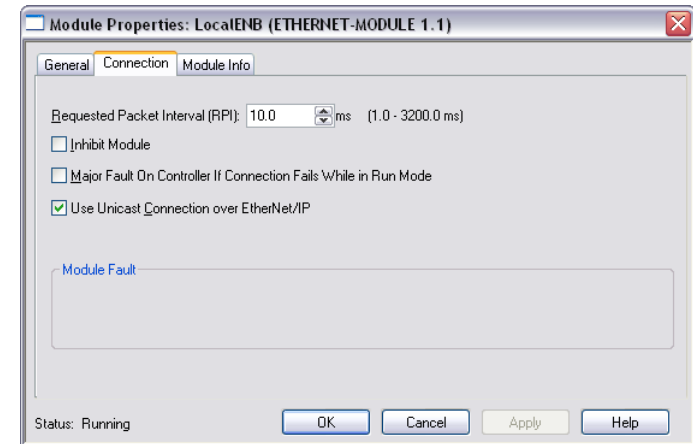
RSLogix 5000 requires a configuration assembly instance. Both modules do not provide a configuration assembly instance. Therefore it is allowed to select an instance of 3 and to set the value to zero.

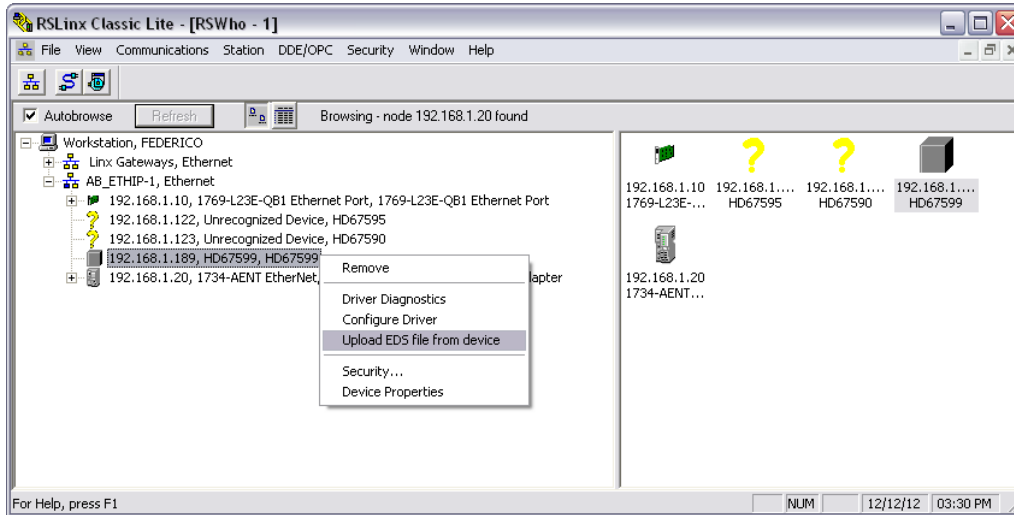
3) The setting of 10msec for the "Requested Packet Interval (RPI)" is adequate but it is possible to change this value as required. A lower value of 2ms shall not be selected.



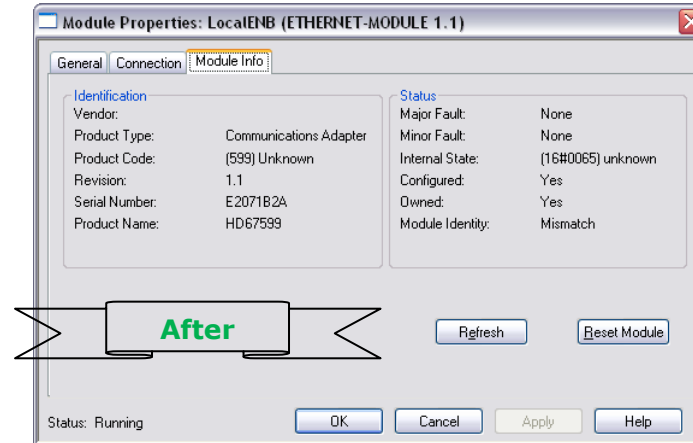
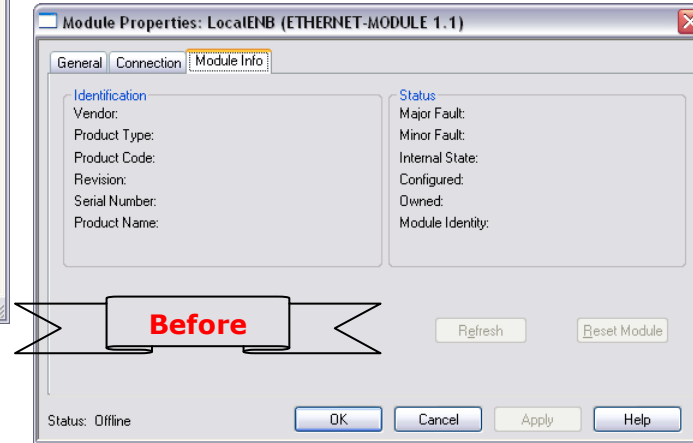
Warning:

The field "Use Unicast Connection over EtherNet/IP" must be checked.





5) With "RSLinks Classic Lite", after have done a network scan (RSWho), and finding the EtherNet/IP device, it is possible to load the EDS file for the device in order to have the "Module Info" compiled.



DISCLAIMER:

All technical content within this document can be modified without notice. The content of the document is a under continual renewal. For losses due to fire, earthquake, third party access or other accidents, or intentional or accidental abuse, misuse, or use under abnormal conditions repairs are charged to the user. ADFweb.com S.r.l. will not be liable for accidental loss of use or inability to use this product, such as loss of business income. ADFweb.com S.r.l. shall not be liable for consequences of improper use.

OTHER REGULATIONS AND STANDARDS:**WEEE INFORMATION**

Disposal of old electrical and electronic equipment (as in the European Union and other European countries with separate collection systems).

— This symbol on the product or on its packaging indicates that this product may not be treated as household rubbish. Instead, it should be taken to an applicable collection point for the recycling of electrical and electronic equipment. If the product is disposed correctly, you will help prevent potential negative environmental factors and impact of human health, which could otherwise be caused by inappropriate disposal. The recycling of materials will help to conserve natural resources. For more information about recycling this product, please contact your local city office, your household waste disposal service or the shop where you purchased the product.

RESTRICTION OF HAZARDOUS SUBSTANCES DIRECTIVE

The device respects the 2002/95/EC Directive on the restriction of the use of certain hazardous substances in electrical and electronic equipment (commonly referred to as Restriction of Hazardous Substances Directive or RoHS).

CE MARKING

The product conforms with the essential requirements of the applicable EC directives.

WARRANTIES AND TECHNICAL SUPPORT:

For fast and easy technical support for your ADFweb.com SRL products, consult our internet support at www.adfweb.com.
Otherwise contact us at the address support@adfweb.com

RETURN POLICY:

If while using your product you have any problem and you wish to exchange or repair it, please do the following:

- Obtain a Product Return Number (PRN) from our internet support at www.adfweb.com. Together with the request, you need to provide detailed information about the problem.
- Send the product to the address provided with the PRN, having prepaid the shipping costs (shipment costs billed to us will not be accepted).

If the product is within the warranty of twelve months, it will be repaired or exchanged and returned within three weeks. If the product is no longer under warranty, you will receive a repair estimate.



ADFweb.com S.r.l.
Via Strada Nuova, 17
IT-31010 Mareno di Piave
TREVISO (Italy)
Phone +39.0438.30.91.31
Fax +39.0438.49.20.99
www.adfweb.com

