

User Manual

Revision 1.000

English

LoRaWAN / CAN - Converter

(Order Code: HD67D19-B2-868MHz)

For Website information:

www.adfweb.com?Product=HD67D19-B2

For Price information:

www.adfweb.com?Price=HD67D19-B2-868MHz

Benefits and Main Features:

- ⊕ Very easy to configure
- ⊕ Power Supply 18...35V DC and 8...24 V AC
- ⊕ Temperature range: -40°C/+85°C (-40°F/+185°F)



For others LoRaWAN products, see also the following links:

Converter LoRaWAN to

- www.adfweb.com?Product=HD67D01
- www.adfweb.com?Product=HD67D02
- www.adfweb.com?Product=HD67D03
- www.adfweb.com?Product=HD67D04
- www.adfweb.com?Product=HD67D05
- www.adfweb.com?Product=HD67D15
- www.adfweb.com?Product=HD67D16
- www.adfweb.com?Product=HD67D17
- www.adfweb.com?Product=HD67D18
- www.adfweb.com?Product=HD67D20
- www.adfweb.com?Product=HD67D21
- www.adfweb.com?Product=HD67D22
- www.adfweb.com?Product=HD67D23
- www.adfweb.com?Product=HD67D24
- www.adfweb.com?Product=HD67D25
- www.adfweb.com?Product=HD67D26
- www.adfweb.com?Product=HD67D27
- www.adfweb.com?Product=HD67D28
- www.adfweb.com?Product=HD67D29
- www.adfweb.com?Product=HD67D30
- www.adfweb.com?Product=HD67D31
- www.adfweb.com?Product=HD67D32
- www.adfweb.com?Product=HD67D33
- www.adfweb.com?Product=HD67D34
- www.adfweb.com?Product=HD67D35
- www.adfweb.com?Product=HD67D36
- www.adfweb.com?Product=HD67D37
- www.adfweb.com?Product=HD67D38
- www.adfweb.com?Product=HD67D39
- www.adfweb.com?Product=HD67D40
- www.adfweb.com?Product=HD67D41

- (LoRaWAN)**
- (LoRaWAN)**
- (Modbus TCP Master)**
- (Modbus TCP Slave)**
- (Serial)**
- (M-Bus)**
- (BACnet Master)**
- (BACnet Slave)**
- (Ethernet)**
- (CANopen)**
- (DeviceNet Master)**
- (DeviceNet Slave)**
- (DMX)**
- (EtherNet/IP Master)**
- (EtherNet/IP Slave)**
- (J1939)**
- (KNX)**
- (NMEA 0183)**
- (NMEA 2000)**
- (PROFIBUS Master)**
- (PROFIBUS Slave)**
- (PROFINET Master)**
- (PROFINET Slave)**
- (IEC61850 Client)**
- (IEC61850 Server)**
- (MQTT)**
- (OPC UA Client)**
- (OPC UA Server)**
- (S7comm)**
- (SNMP Manager)**
- (SNMP Agent)**



User Manual

INDEX:

	Page
INDEX	2
UPDATED DOCUMENTATION	2
REVISION LIST	2
WARNING	2
TRADEMARKS	2
SECURITY ALERT	3
EXAMPLE OF CONNECTION	4
CONNECTION SCHEME	5
CHARACTERISTICS	6
CONFIGURATION	6
POWER SUPPLY	7
FUNCTION MODES	8
LEDS	9
LORAWAN	10
CAN	11
ETHERNET	12
USE OF COMPOSITOR SW67D19	13
NEW CONFIGURATION / OPEN CONFIGURATION	14
SOFTWARE OPTIONS	15
SET COMMUNICATION	17
LORAWAN ACCESS	19
RECEIVE FRAMES	21
SEND FRAMES	23
UPDATE DEVICE	25
LORAWAN PAYLOAD	27
MECHANICAL DIMENSIONS	28
ORDERING INFORMATIONS	29
ACCESSORIES	29
DISCLAIMER	30
OTHER REGULATIONS AND STANDARDS	30
WARRANTIES AND TECHNICAL SUPPORT	31
RETURN POLICY	31

UPDATED DOCUMENTATION:

Dear customer, we thank you for your attention and we remind you that you need to check that the following document is:

- ✚ Updated
- ✚ Related to the product you own

To obtain the most recently updated document, note the “document code” that appears at the top right-hand corner of each page of this document.

With this “Document Code” go to web page www.adfweb.com/download/ and search for the corresponding code on the page. Click on the proper “Document Code” and download the updates.

REVISION LIST:

Revision	Date	Author	Chapter	Description
1.000	04/12/2020	Ff	All	First release version

WARNING:

ADFweb.com reserves the right to change information in this manual about our product without warning. ADFweb.com is not responsible for any error this manual may contain.

TRADEMARKS:

All trademarks mentioned in this document belong to their respective owners.

SECURITY ALERT:**GENERAL INFORMATION**

To ensure safe operation, the device must be operated according to the instructions in the manual. When using the device, legal and safety regulation are required for each individual application. The same applies also when using accessories.

INTENDED USE

Machines and systems must be designed so the faulty conditions do not lead to a dangerous situation for the operator (i.e. independent limit switches, mechanical interlocks, etc.).

QUALIFIED PERSONNEL

The device can be used only by qualified personnel, strictly in accordance with the specifications. Qualified personnel are persons who are familiar with the installation, assembly, commissioning and operation of this equipment and who have appropriate qualifications for their job.

RESIDUAL RISKS

The device is state-of-the-art and is safe. The instruments can represent a potential hazard if they are inappropriately installed and operated by untrained personnel. These instructions refer to residual risks with the following symbol:



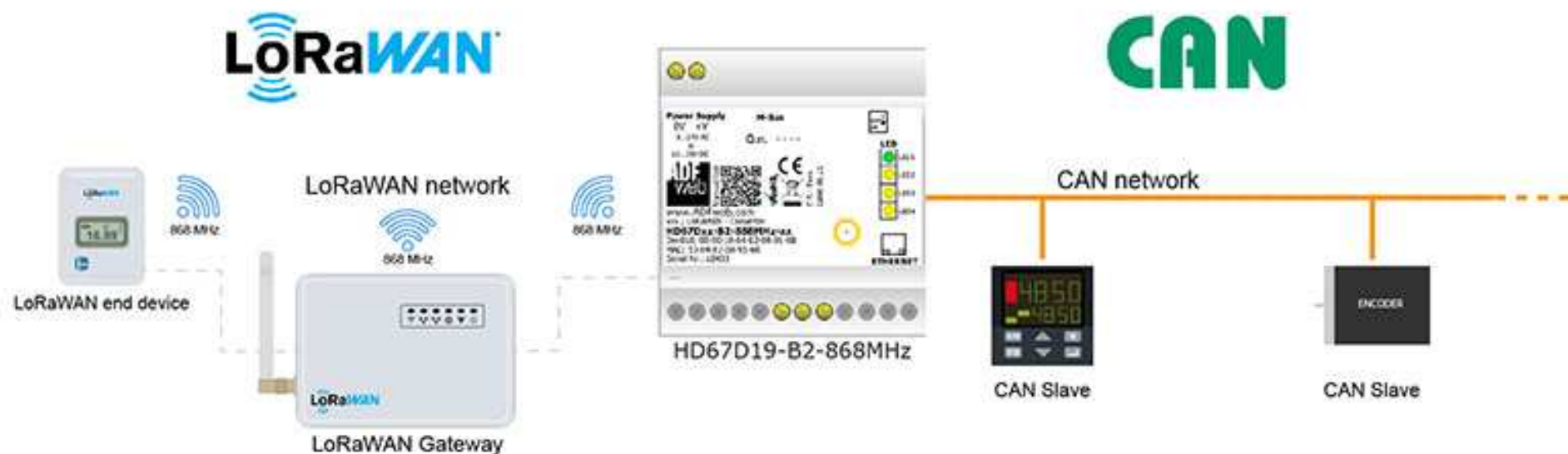
This symbol indicates that non-observance of the safety instructions is a danger for people that could lead to serious injury or death and / or the possibility of damage.

CE CONFORMITY

The declaration is made by our company. You can send an email to support@adfweb.com or give us a call if you need it.

EXAMPLE OF CONNECTION:

CAN / LoRaWAN - Converter
HD67D19-B2



ADFweb.com



+39 0438 309 131



+39 349 440 9592



support@adfweb.com

CONNECTION SCHEME:

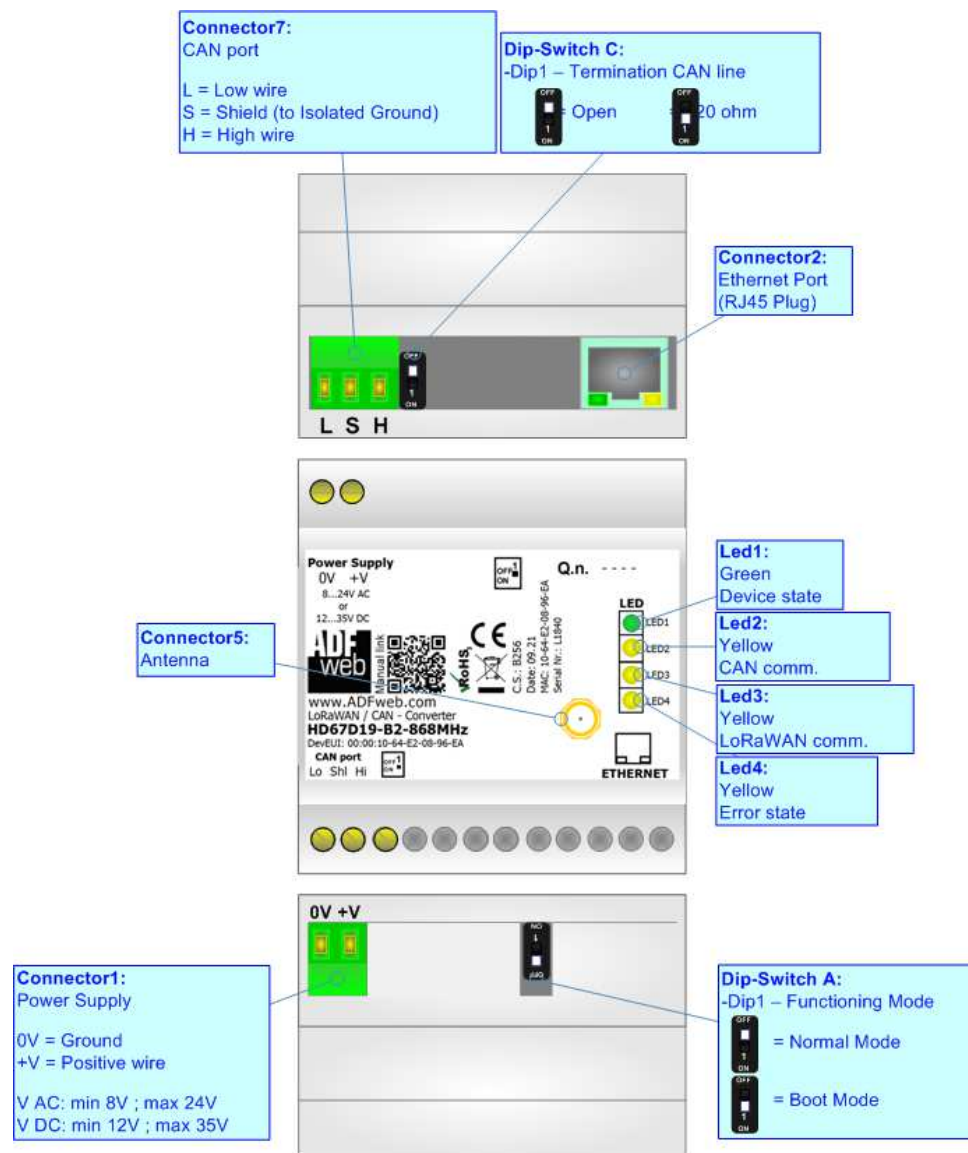


Figure 1: Connection scheme for HD67D19-B2-xxxMHz

CHARACTERISTICS:

The HD67D19-B2 is a LoRaWAN / CAN Converter.

It allows the following characteristics:

- Electrical isolation between CAN and Power Supply;
- Mountable on 35mm Rail DIN;
- Wide power supply input range: 12...35V DC and 8...24V AC;
- Wide temperature range: -40°C / 85°C [-40°F / +185°F].

CONFIGURATION:

You need Compositor SW67D19 software on your PC in order to perform the following:

- Define the parameter of LoRaWAN line;
- Define the parameter of CAN line;
- Define the list of LoRaWAN messages in uplink and downlink to the LoRaWAN gateway;
- Define the list of CAN messages in transmission and reception;
- Update the device.

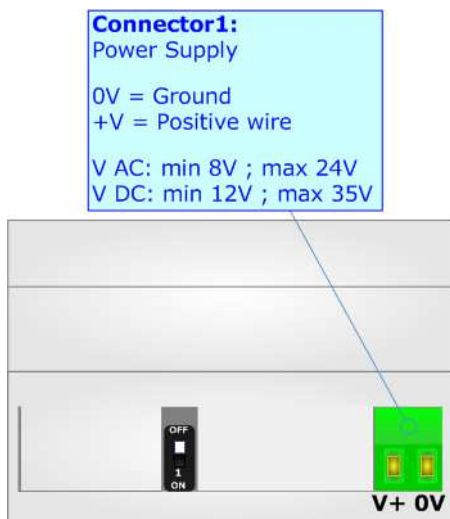
POWER SUPPLY:

The devices can be powered at 8...24V AC and 12...35V DC. For more details see the two tables below.

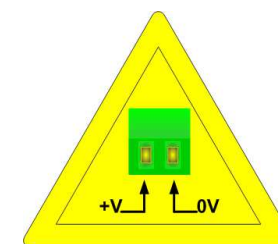
VAC 		VDC 	
Vmin	Vmax	Vmin	Vmax
8V	24V	12V	35V

Consumption at 24V DC:

Device	Consumption [W/VA]
HD67D19-B2-xxxMHz	3.5



Caution: Not reverse the polarity power



HD67D19-B2-xxxMHz

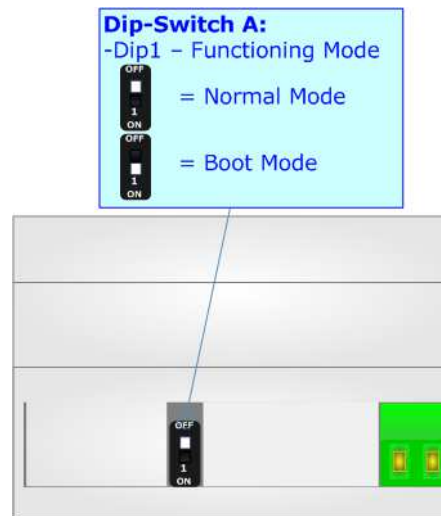
FUNCTION MODES:

The device has got two functions mode depending of the position of the 'Dip1 of Dip-Switch A':

- The first, with 'Dip1 of Dip-Switch A' at "OFF" position, is used for the normal working of the device.
- The second, with 'Dip1 of Dip-Switch A' at "ON" position, is used for upload the Project and/or Firmware.

For the operations to follow for the updating, see 'UPDATE DEVICE' section.

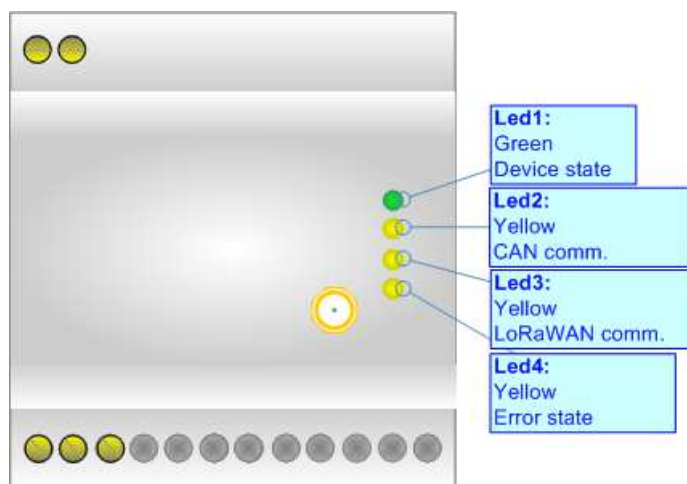
According to the functioning mode, the LEDs will have specifics functions, see 'LEDS' section.



LEDS:

The device has got four LEDs that are used to give information of the functioning status. The various meanings of the LEDs are described in the table below.

LED	Normal Mode	Boot Mode
1: Device State (green)	Blinks slowly (~1Hz)	Blinks quickly: Boot state Blinks very slowly (~0.5Hz): update in progress
2: CAN communication (yellow)	Blinks when a CAN message is received	Blinks quickly: Boot state Blinks very slowly (~0.5Hz): update in progress
3: LoRaWAN communication (yellow)	Blinks when LoRaWAN data is received	Blinks quickly: Boot state Blinks very slowly (~0.5Hz): update in progress
4: Error state (yellow)	ON: An error in the communication busses occurs OFF: No errors are present	Blinks quickly: Boot state Blinks very slowly (~0.5Hz): update in progress



LORAWAN:

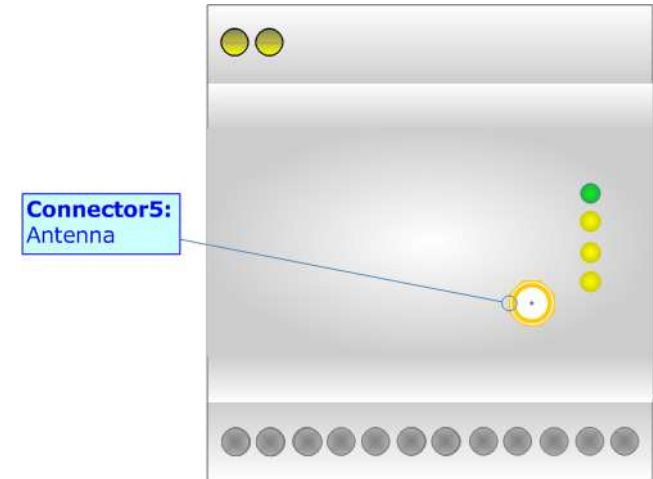
The LoRaWAN® specification is a Low Power, Wide Area (LPWA) networking protocol designed to wirelessly connect battery operated 'things' to the internet in regional, national or global networks, and targets key Internet of Things (IoT) requirements such as bi-directional communication, end-to-end security, mobility and localization services.

LoRaWAN® network architecture is deployed in a star-of-stars topology in which gateways relay messages between end-devices and a central network server.

The wireless communication takes advantage of the Long Range characteristics of the LoRa physical layer, allowing a single-hop link between the end-device and one or many gateways. All modes are capable of bi-directional communication, and there is support for multicast addressing groups to make efficient use of spectrum during tasks such as Firmware Over-The-Air (FOTA) upgrades or other mass distribution messages.

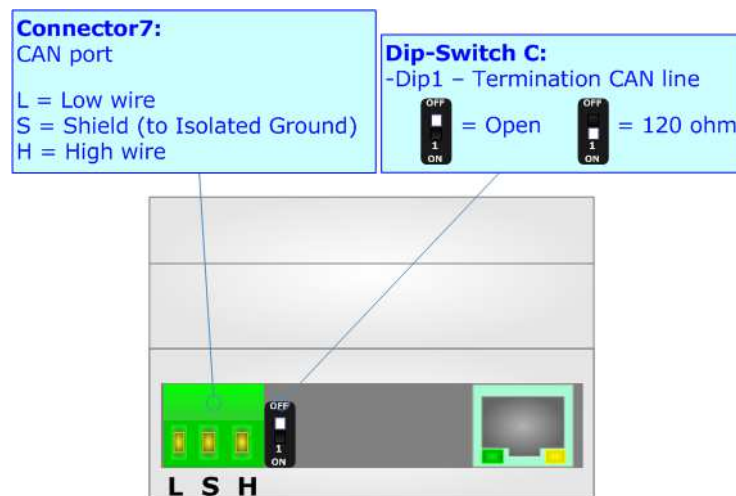
Converters from HD67D19 serie act as end-devices and they can communicate with one or more LoRaWAN Gateways.

The converters support all the standard datarates and they work both on public and private networks.



CAN:

For terminating the CAN line with a 120Ω resistor it is necessary that the Dip1 of 'Dip-Switch B' is at ON position.



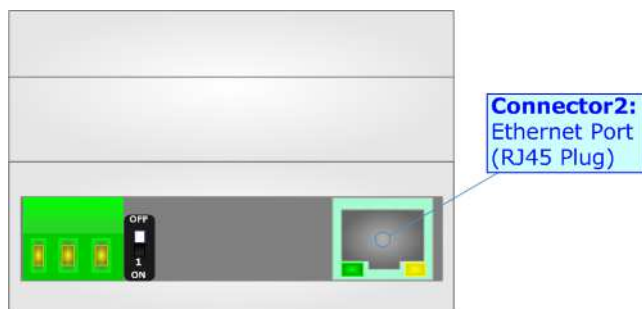
Cable characteristics:

DC parameter:	Impedance	70 Ohm/m
AC parameters:	Impedance	120 Ohm/m
	Delay	5 ns/m
Length	Baud Rate [bps]	Length MAX [m]
	10 K	5000
	20 K	2500
	50 K	1000
	100 K	650
	125 K	500
	250 K	250
	500 K	100
	800 K	50
	1000 K	25

ETHERNET:

The Ethernet port is used for programming the device.

The Ethernet connection must be made using Connector2 of HD67D19-B2 with at least a Category 5E cable. The maximum length of the cable should not exceed 100m. The cable has to conform to the T568 norms relative to connections in cat.5 up to 100 Mbps. To connect the device to an Hub/Switch is recommended the use of a straight cable, to connect the device to a PC is recommended the use of a cross cable.



USE OF COMPOSITOR SW67D19:

To configure the Converter, use the available software that runs with Windows called SW67D19. It is downloadable on the site www.adfweb.com and its operation is described in this document. The software works with MS Windows (XP, Vista, Seven, 8, 10; 32/64bit). When launching the SW67D19, the window below appears (Fig. 2).

**Note:**

It is necessary to have installed .Net Framework 4.



Figure 2: Main window for SW67D19

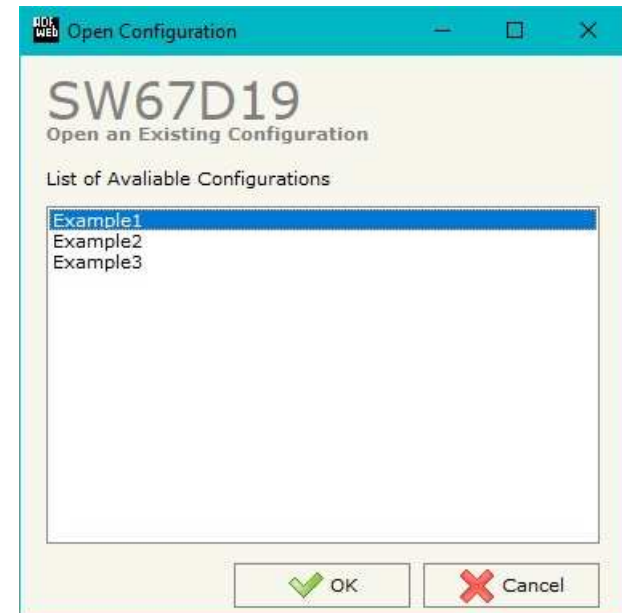
NEW CONFIGURATION / OPEN CONFIGURATION:

The “**New Configuration**” button creates the folder which contains the entire device’s configuration.




A device’s configuration can also be imported or exported:

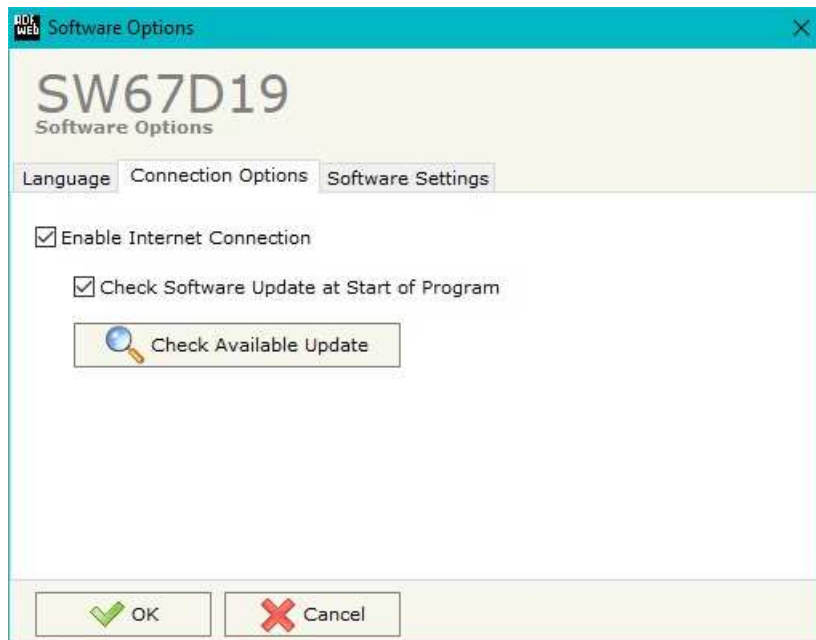
- To clone the configurations of a Programmable “LoRaWAN / CAN - Converter” in order to configure another device in the same manner, it is necessary to maintain the folder and all its contents;
- To clone a project in order to obtain a different version of the project, it is sufficient to duplicate the project folder with another name and open the new folder with the button “**Open Configuration**”.



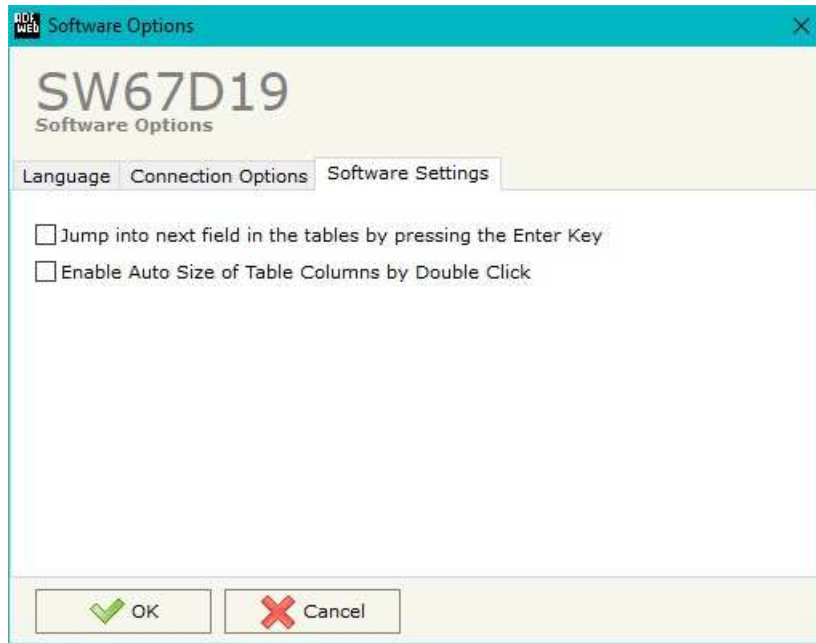
SOFTWARE OPTIONS:

By pressing the “**Settings**” () button there is the possibility to change the language of the software and check the updatings for the compositor.

In the section “Language” it is possible to change the language of the software.



In the section “Connection Options”, it is possible to check if there are some updatings of the software compositor in ADFweb.com website. Checking the option “**Check Software Update at Start of Program**”, the SW67D19 check automatically if there are updatings when it is launched.



In the section "Software Settings", it is possible to enable/disable some keyboard's commands for an easier navigation inside the tables contained in the different sections of the software.

SET COMMUNICATION:

By Pressing the **“Set Communication”** button from the main window for SW67D19 (Fig. 2) the window **“Set Communication”** appears (Fig. 3).

The means of the fields for the **“LoRaWAN”** section are:

- In the field **“RF Band”** the wireless band used for LoRaWAN communication is defined;
- In the field **“Network Type”** the type of LoRaWAN network is defined;
- If the field **“Adaptive Data Rate”** is checked, the converter will enable the ADR functionalities to select the best data rate to be used in relation to the environmental conditions;
- In the field **“Data Rate”** the data rate for LoRaWAN communication is defined;
- In the field **“Transmission Type”** the type of LoRaWAN communication is defined;
- In the field **“Max Payload Size”** the maximum dimension of the LoRaWAN messages is defined (fixed in relation to the data rate selected);
- In the field **“Activation Method”** the method used to join into a LoRaWAN network is defined;
- In the field **“Device Address”** the device identifier (DevEUI) is defined (only for ABP method);
- In the field **“Application Identifier”** the application identifier (AppEUI) is defined (only for ABP method);
- In the field **“Network Session Key”** the key used for the communication with the LoRaWAN gateway (NwksKey) is defined (only for ABP method);
- In the field **“Application Session Key”** the key for encryption and decryption of the payload (AppSKey) is defined (only for ABP method);
- If OTAA method is selected, in the field **“Application Key”** the secret key for the dynamic activation of the converter in the LoRAWAN network is defined.



Figure 3: **“Set Communication”** window

The means for the fields for the "CAN" are:

- ➔ In the field "**Baudrate**" the baudrate of the CAN line is defined;

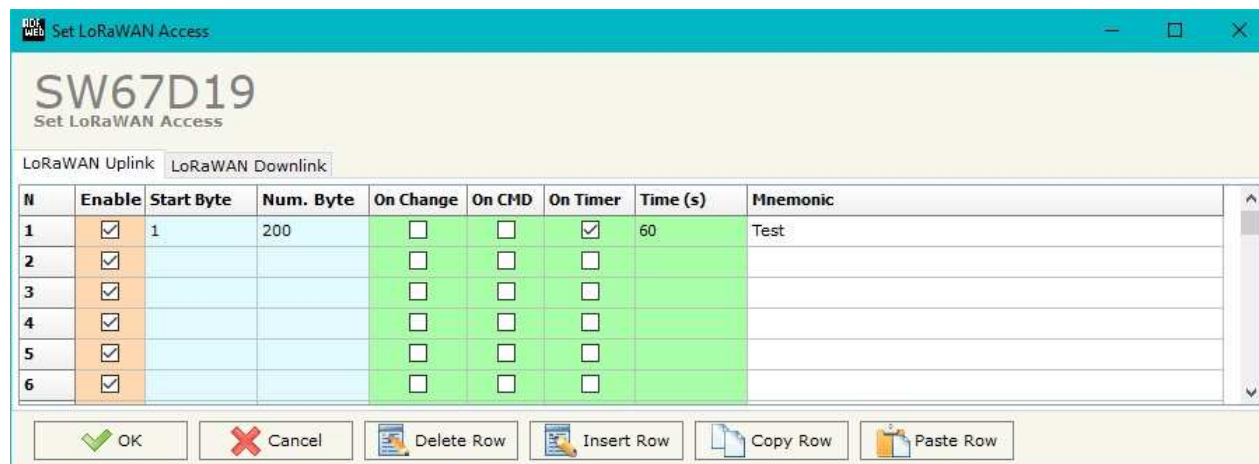
The means of the fields for "Ethernet" section are:

- ➔ In the fields "**IP Address**" the IP address for Ethernet side of the converter is defined;
- ➔ In the fields "**SubNet Mask**" the SubNet Mask for Ethernet side of the converter is defined;
- ➔ In the fields "**Gateway**" the default gateway of the net is defined. This feature can be enabled or disabled pressing the Check Box field. This feature is used for going out of the net;
- ➔ In the fields "**DNS**" the IP address of the DNS server is defined

LORAWAN ACCESS:

By Pressing the “**LoRaWAN Access**” button from the main window for SW67D19 (Fig. 2) the window “Set LoRaWAN Access” appears (Fig. 4). This section is used to define the LoRaWAN messages where the converter will place the data read from CAN (Uplink) and the LoRaWAN messages that the converter will take (Downlink) for writing the data to CAN.

LoRaWAN UPLINK



N	Enable	Start Byte	Num. Byte	On Change	On CMD	On Timer	Time (s)	Mnemonic
1	<input checked="" type="checkbox"/>	1	200	<input type="checkbox"/>	<input type="checkbox"/>	<input checked="" type="checkbox"/>	60	Test
2	<input checked="" type="checkbox"/>			<input type="checkbox"/>	<input type="checkbox"/>	<input type="checkbox"/>		
3	<input checked="" type="checkbox"/>			<input type="checkbox"/>	<input type="checkbox"/>	<input type="checkbox"/>		
4	<input checked="" type="checkbox"/>			<input type="checkbox"/>	<input type="checkbox"/>	<input type="checkbox"/>		
5	<input checked="" type="checkbox"/>			<input type="checkbox"/>	<input type="checkbox"/>	<input type="checkbox"/>		
6	<input checked="" type="checkbox"/>			<input type="checkbox"/>	<input type="checkbox"/>	<input type="checkbox"/>		

Figure 4a: “LoRaWAN Access → LoRaWAN Uplink” window

The means of the fields are:

- If the field “**Enable**” is checked, the LoRaWAN message is enabled;
- In the field “**Start Byte**” the starting byte of the internal memory array where taking the data is defined;
- In the field “**Num. Byte**” the number of consecutive bytes to take from the internal array starting from “Start Byte” is defined;
- If the field “**On Change**” is checked, the LoRaWAN message is sent only when the data from CAN change;
- If the field “**On CMD**” is checked, the LoRaWAN message is sent when a CAN message is received;
- If the field “**On Timer**” is checked, the LoRaWAN message is sent cyclically with the delay defined in “**Time (s)**” field;
- In the field “**Mnemonic**” a description of the message is defined.

LoRaWAN DOWNLINK

N	Enable	Start Byte	Num. Byte	Mnemonic
0	<input checked="" type="checkbox"/>	1	200	Test
1	<input checked="" type="checkbox"/>			
2	<input checked="" type="checkbox"/>			
3	<input checked="" type="checkbox"/>			
4	<input checked="" type="checkbox"/>			
5	<input checked="" type="checkbox"/>			

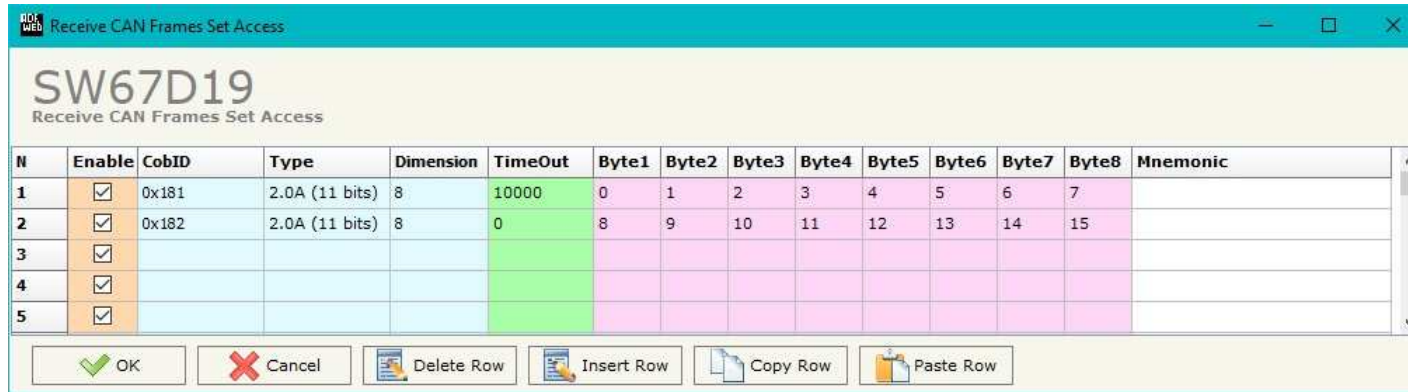
Figure 4b: "LoRAWAN Access → LoRaWAN Downlink" window

The means of the fields are:

- If the field "**Enable**" is checked, the LoRaWAN message is enabled;
- In the field "**Start Byte**" the starting byte of the internal memory array where placing the data is defined;
- In the field "**Num. Byte**" the number of consecutive bytes to write to the internal array starting from "Start Byte" is defined;
- In the field "**Mnemonic**" a description of the message is defined.

RECEIVE FRAMES:

By pressing the **Receive Frames** button from the main window for SW67D19 (Fig. 2) the "Receive CAN Frames" window appears (Fig. 5). The COB inserted in this table contains the data to write on LoRaWAN side. These frames are accepted by the converter.



N	Enable	CobID	Type	Dimension	TimeOut	Byte1	Byte2	Byte3	Byte4	Byte5	Byte6	Byte7	Byte8	Mnemonic
1	<input checked="" type="checkbox"/>	0x181	2.0A (11 bits)	8	10000	0	1	2	3	4	5	6	7	
2	<input checked="" type="checkbox"/>	0x182	2.0A (11 bits)	8	0	8	9	10	11	12	13	14	15	
3	<input checked="" type="checkbox"/>													
4	<input checked="" type="checkbox"/>													
5	<input checked="" type="checkbox"/>													

Figure 5: "Receive CAN Frames Set Access" window

The data of the columns have the following meanings:

- If the field **Enable** is checked, the CAN frame is enabled;
- In the field **Cob-ID** the COB of the CAN frame is defined;
- In the field **Type** the type of CAN packet use for the Cob-ID is defined (2.0A (11 bits) or 2.0B (29 bits));
- In the field **Dimension** the number of byte of the COB (from 1 to 8) is defined;
- The field **TimeOut** is used for put at zero the data into LoRaWAN array if the CAN frame arrives with a frequency less than the time expressed in the field. If the value in the field is '0', it means that you don't want to use this feature;
- In the field **Byte1** insert the byte of the internal array where saving 1st byte of the CAN message;
- In the field **Byte2** insert the byte of the internal array where saving 2nd byte of the CAN message;
- In the field **Byte3** insert the byte of the internal array where saving 3rd byte of the CAN message;
- In the field **Byte4** insert the byte of the internal array where saving 4th byte of the CAN message;
- In the field **Byte5** insert the byte of the internal array where saving 5th byte of the CAN message;

- In the field "**Byte6**" insert the byte of the internal array where saving 6th byte of the CAN message;
- In the field "**Byte7**" insert the byte of the internal array where saving 7th byte of the CAN message;
- In the field "**Byte8**" insert the byte of the internal array where saving 8th byte of the CAN message;
- In the field "**Mnemonic**" a brief description is defined.

SEND FRAMES:

By pressing the **Send Frames** button from the main window for SW67D19 (Fig. 2) the "Send CAN frames" window appears (Fig. 6). The COB inserted in this table contains the data received from LoRaWAN side. These frames are sent by the converter.

N	Enable	CobID	Type	Dimension	OnChange	OnCMD	OnTimer	Time	Byte1	Byte2	Byte3	Byte4	Byte5	Byte6	Byte7	Byte8	Mnemonic
1	<input checked="" type="checkbox"/>	0x201	2.0A (11 bits)	8	<input checked="" type="checkbox"/>	<input checked="" type="checkbox"/>	<input checked="" type="checkbox"/>	1000	0	1	2	3	4	5	6	7	
2	<input checked="" type="checkbox"/>	0x202	2.0A (11 bits)	8	<input type="checkbox"/>	<input type="checkbox"/>	<input checked="" type="checkbox"/>	2000	8	9	10	11	12	13	14	15	
3	<input checked="" type="checkbox"/>				<input type="checkbox"/>	<input type="checkbox"/>	<input type="checkbox"/>										
4	<input checked="" type="checkbox"/>				<input type="checkbox"/>	<input type="checkbox"/>	<input type="checkbox"/>										
5	<input checked="" type="checkbox"/>				<input type="checkbox"/>	<input type="checkbox"/>	<input type="checkbox"/>										

Figure 6: "Transmit CAN Frames Set Access" window

The data of the columns have the following meanings:

- If the field **Enable** is checked, the CAN frame is enabled;
- In the field **Cob-ID** the COB of the CAN frame is defined;
- In the field **Type** the type of CAN packet use for this Cob-ID is defined (2.0A (11 bits) or 2.0B (29 bits));
- In the field **Dimension** the number of byte of the COB (from 1 to 8) is defined;
- If the field **OnChange** is checked, the frame is sent when the data from LoRaWAN change;
- If the field **OnCMD** is checked, the frame is sent when a LoRaWAN message is received;
- If the field **OnTimer** is checked, the frame is sent cyclically with the delay defined in the field **Time** (expressed in ms);
- In the field **Byte1** insert the byte of the internal array where taking 1st byte of the CAN message;
- In the field **Byte2** insert the byte of the internal array where taking 2nd byte of the CAN message;
- In the field **Byte3** insert the byte of the internal array where taking 3rd byte of the CAN message;
- In the field **Byte4** insert the byte of the internal array where taking 4th byte of the CAN message;
- In the field **Byte5** insert the byte of the internal array where taking 5th byte of the CAN message;

- In the field "**Byte6**" insert the byte of the internal array where taking 6th byte of the CAN message;
- In the field "**Byte7**" insert the byte of the internal array where taking 7th byte of the CAN message;
- In the field "**Byte8**" insert the byte of the internal array where taking 8th byte of the CAN message;
- In the field "**Mnemonic**" it is possible to insert a brief description.

UPDATE DEVICE:

By pressing the “**Update Device**” button, it is possible to load the created Configuration into the device; and also the Firmware, if necessary. This by using the Ethernet port.

If you don't know the actual IP address of the device you have to use this procedure:

- Turn OFF the Device;
- Put Dip1 of 'Dip-Switch A' in ON position;
- Turn ON the device
- Connect the Ethernet cable;
- Insert the IP “**192.168.2.205**”;
- Select which operations you want to do;
- Press the “**Execute update firmware**” button to start the upload;
- When all the operations are “OK” turn OFF the Device;
- Put Dip1 of 'Dip-Switch A' in OFF position;
- Turn ON the device.

If you know the actual IP address of the device, you have to use this procedure:

- Turn ON the Device with the Ethernet cable inserted;
- Insert the actual IP of the Converter;
- Select which operations you want to do;
- Press the “**Execute update firmware**” button to start the upload;
- When all the operations are “OK” the device automatically goes at Normal Mode.

At this point the configuration/firmware on the device is correctly updated.

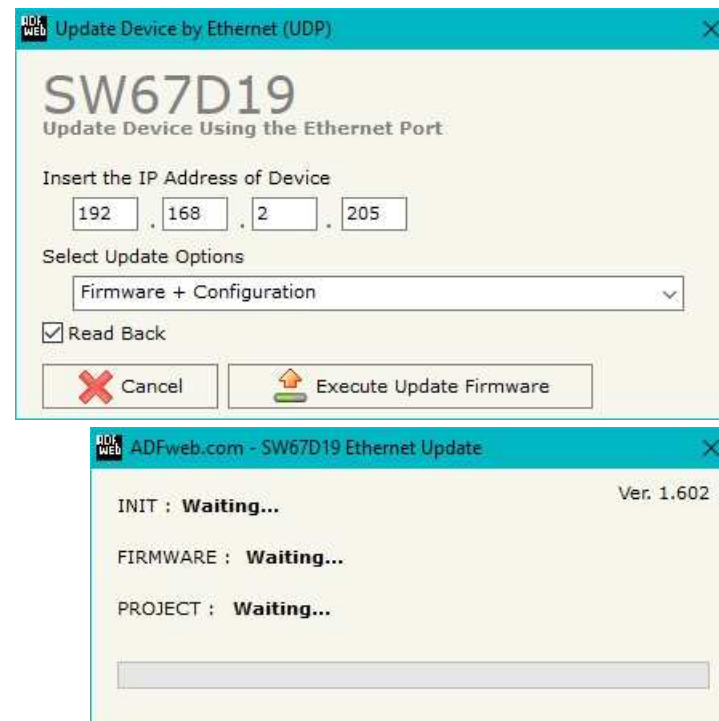


Figure 7: "Update device" windows

**Note:**

When you receive the device, for the first time, you also have to update the Firmware in the HD67D19 device.

**Warning:**

If Fig. 8 appears when you try to do the Update try these points before seeking assistance:

- ➔ Try to repeat the operations for the updating;
- ➔ Try with another PC;
- ➔ Try to restart the PC;
- ➔ Check the LAN settings;
- ➔ If you are using the program inside a Virtual Machine, try to use in the main Operating System;
- ➔ If you are using Windows Seven, Vista, 8 or 10 make sure that you have the administrator privileges;
- ➔ In case you have to program more than one device, using the "UDP Update", you have to cancel the ARP table every time you connect a new device on Ethernet. For do this you have to launch the "Command Prompt" and write the command "arp - d". Pay attention that with Windows Vista, Seven, 8, 10 you have to launch the "Command Prompt" with Administrator Rights;
- ➔ Pay attention at Firewall lock.

**Warning:**

In the case of HD67D19 you have to use the software "SW67D19": www.adfweb.com/download/filefold/SW67D19.zip.



Figure 8: "Error" window

LORAWAN PAYLOAD

The LoRaWAN messages in Uplink and Downlink are structured into a defined format in order to recognize them from LoRaWAN gateway side and to understand to which bytes of the internal memory array they are associated.

The payload of the LoRaWAN messages is defined in Hex format:

- The first byte refers to the row of the tables defined into "LoRaWAN Access" section of SW67D19: it can have a value between 0 and 255 (0xFF);
- The following bytes will contain the data to be linked to the internal memory arrays of the converter (using "Start Byte" and "Num. Byte" of "LoRaWAN Access" section of SW67D19);

Example 1:

the converter is sending a LoRaWAN message related to row 4 of "LoRaWAN Access → LoRaWAN Uplink" table of "LoRaWAN Access" section of SW67D19 with a "Num. Byte" set of '4'. The data from these 4 bytes is "01 02 03 04" (hex).

The payload of the LoRaWAN message will look like "04 01 02 03 04" where:

- 04: index of the row of "LoRaWAN Access → LoRaWAN Uplink" table;
- 01 02 03 04: data taken from internal memory array of the converter.

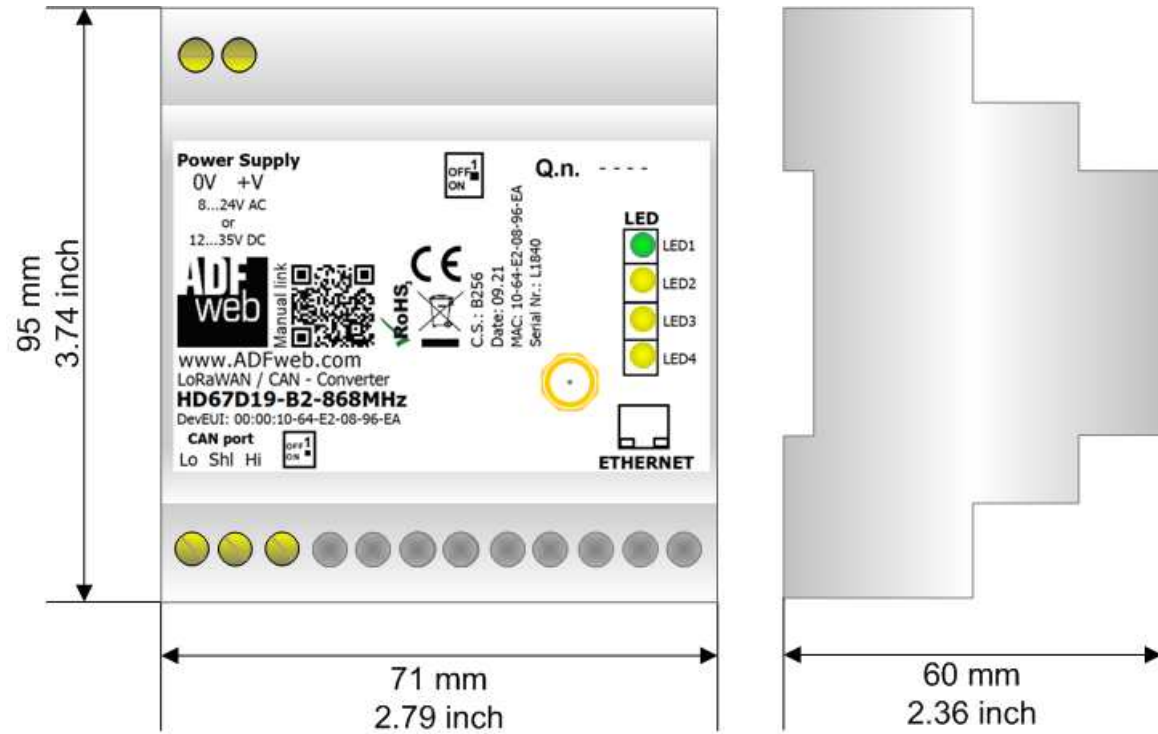
Example 2:

The external LoRaWAN gateway needs to send a LoRaWAN message to the converter and link it to row 3 of "LoRaWAN Access → LoRaWAN Downlink" table of "LoRaWAN Access" section of SW67D19. The "Num. Byte" set is '4' and the data to be written is "55 66 77 88" (hex).

The payload of the LoRaWAN message will look like "03 55 66 77 88" where:

- 03: index of the row of "LoRaWAN Access → LoRaWAN Downlink" table;
- 55 66 77 88: data to be written to the internal memory array of the converter.

MECHANICAL DIMENSIONS:



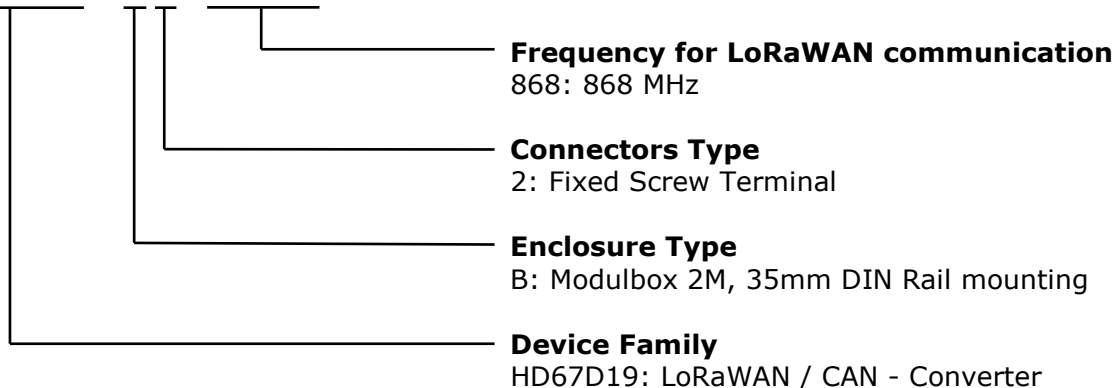
Housing: PVC
Weight: 200g (Approx)

Figure 9: Mechanical dimensions scheme for HD67D19-B2

ORDERING INFORMATIONS:

The ordering part number is formed by a valid combination of the following:

HD67D19 - B 2 - xxxMHz



Order Code: **HD67D19-B2-868MHz** - LoRaWAN / CAN – Converter

ACCESSORIES:

Order Code: **AC34011** - 35mm Rail DIN - Power Supply 220/240V AC 50/60Hz – 12 V DC

Order Code: **AC34012** - 35mm Rail DIN - Power Supply 220/240V AC 50/60Hz – 24 V DC

DISCLAIMER:

All technical content within this document can be modified without notice. The content of the document is a under continual renewal. For losses due to fire, earthquake, third party access or other accidents, or intentional or accidental abuse, misuse, or use under abnormal conditions repairs are charged to the user. ADFweb.com S.r.l. will not be liable for accidental loss of use or inability to use this product, such as loss of business income. ADFweb.com S.r.l. shall not be liable for consequences of improper use.

OTHER REGULATIONS AND STANDARDS:**WEEE INFORMATION**

Disposal of old electrical and electronic equipment (as in the European Union and other European countries with separate collection systems).

— This symbol on the product or on its packaging indicates that this product may not be treated as household rubbish. Instead, it should be taken to an applicable collection point for the recycling of electrical and electronic equipment. If the product is disposed correctly, you will help prevent potential negative environmental factors and impact of human health, which could otherwise be caused by inappropriate disposal. The recycling of materials will help to conserve natural resources. For more information about recycling this product, please contact your local city office, your household waste disposal service or the shop where you purchased the product.

RESTRICTION OF HAZARDOUS SUBSTANCES DIRECTIVE

The device respects the 2002/95/EC Directive on the restriction of the use of certain hazardous substances in electrical and electronic equipment (commonly referred to as Restriction of Hazardous Substances Directive or RoHS).

CE MARKING

The product conforms with the essential requirements of the applicable EC directives.

WARRANTIES AND TECHNICAL SUPPORT:

For fast and easy technical support for your ADFweb.com SRL products, consult our internet support at www.adfweb.com.
Otherwise contact us at the address support@adfweb.com

RETURN POLICY:

If while using your product you have any problem and you wish to exchange or repair it, please do the following:

- Obtain a Product Return Number (PRN) from our internet support at www.adfweb.com. Together with the request, you need to provide detailed information about the problem.
- Send the product to the address provided with the PRN, having prepaid the shipping costs (shipment costs billed to us will not be accepted).

If the product is within the warranty of twelve months, it will be repaired or exchanged and returned within three weeks. If the product is no longer under warranty, you will receive a repair estimate.



ADFweb.com S.r.l.
Via Strada Nuova, 17
IT-31010 Mareno di Piave
TREVISO (Italy)
Phone +39.0438.30.91.31
Fax +39.0438.49.20.99
www.adfweb.com

