

User Manual

Revision 1.000
English

BACnet Slave / PROFINET Master - Converter

(Order Code: HD67B81-IP-A1, HD67B81-MSTP-A1, HD67B81-MSTP-B2)

Benefits and Main Features:

- ⊕ Triple electrical isolation
- ⊕ Power Supply 18...35V DC and 8...24 V AC
- ⊕ Temperature range: -40°C/+85°C (-40°F/+185°F)



INDEX:

	Page
INDEX	2
UPDATED DOCUMENTATION	2
REVISION LIST	2
WARNING	2
TRADEMARKS	2
SECURITY ALERT	3
EXAMPLE OF CONNECTION	4
CONNECTION SCHEME	5
CHARACTERISTICS	8
CONFIGURATION	8
POWER SUPPLY	9
FUNCTION MODES	10
LEDS	11
ETHERNET	13
RS485	14
USE OF COMPOSITOR SW67B81	15
NEW PROJECT / OPEN PROJECT	16
SOFTWARE OPTIONS	17
SET COMMUNICATION	19
PROFINET ACCESS	21
SET BACNET ACCESS	24
BACNET EDE FILE	25
UPDATE DEVICE	26
MECHANICAL DIMENSIONS	28
ORDERING INFORMATIONS	30
ACCESSORIES	30
DISCLAIMER	31
OTHER REGULATIONS AND STANDARDS	31
WARRANTIES AND TECHNICAL SUPPORT	32
RETURN POLICY	32

UPDATED DOCUMENTATION:

Dear customer, we thank you for your attention and we remind you that you need to check that the following document is:

- ✚ Updated
- ✚ Related to the product you own

To obtain the most recently updated document, note the “document code” that appears at the top right-hand corner of each page of this document.

With this “Document Code” go to web page www.adfweb.com/download/ and search for the corresponding code on the page. Click on the proper “Document Code” and download the updates.

REVISION LIST:

Revision	Date	Author	Chapter	Description
1.000	13/03/2019	Ff	All	First release version
1.001	22/12/2020	Ff	All	Revision

WARNING:

ADFweb.com reserves the right to change information in this manual about our product without warning.
ADFweb.com is not responsible for any error this manual may contain.

TRADEMARKS:

All trademarks mentioned in this document belong to their respective owners.

SECURITY ALERT:**GENERAL INFORMATION**

To ensure safe operation, the device must be operated according to the instructions in the manual. When using the device, legal and safety regulation are required for each individual application. The same applies also when using accessories.

INTENDED USE

Machines and systems must be designed so the faulty conditions do not lead to a dangerous situation for the operator (i.e. independent limit switches, mechanical interlocks, etc.).

QUALIFIED PERSONNEL

The device can be used only by qualified personnel, strictly in accordance with the specifications.

Qualified personnel are persons who are familiar with the installation, assembly, commissioning and operation of this equipment and who have appropriate qualifications for their job.

RESIDUAL RISKS

The device is state-of-the-art and is safe. The instruments can represent a potential hazard if they are inappropriately installed and operated by untrained personnel. These instructions refer to residual risks with the following symbol:

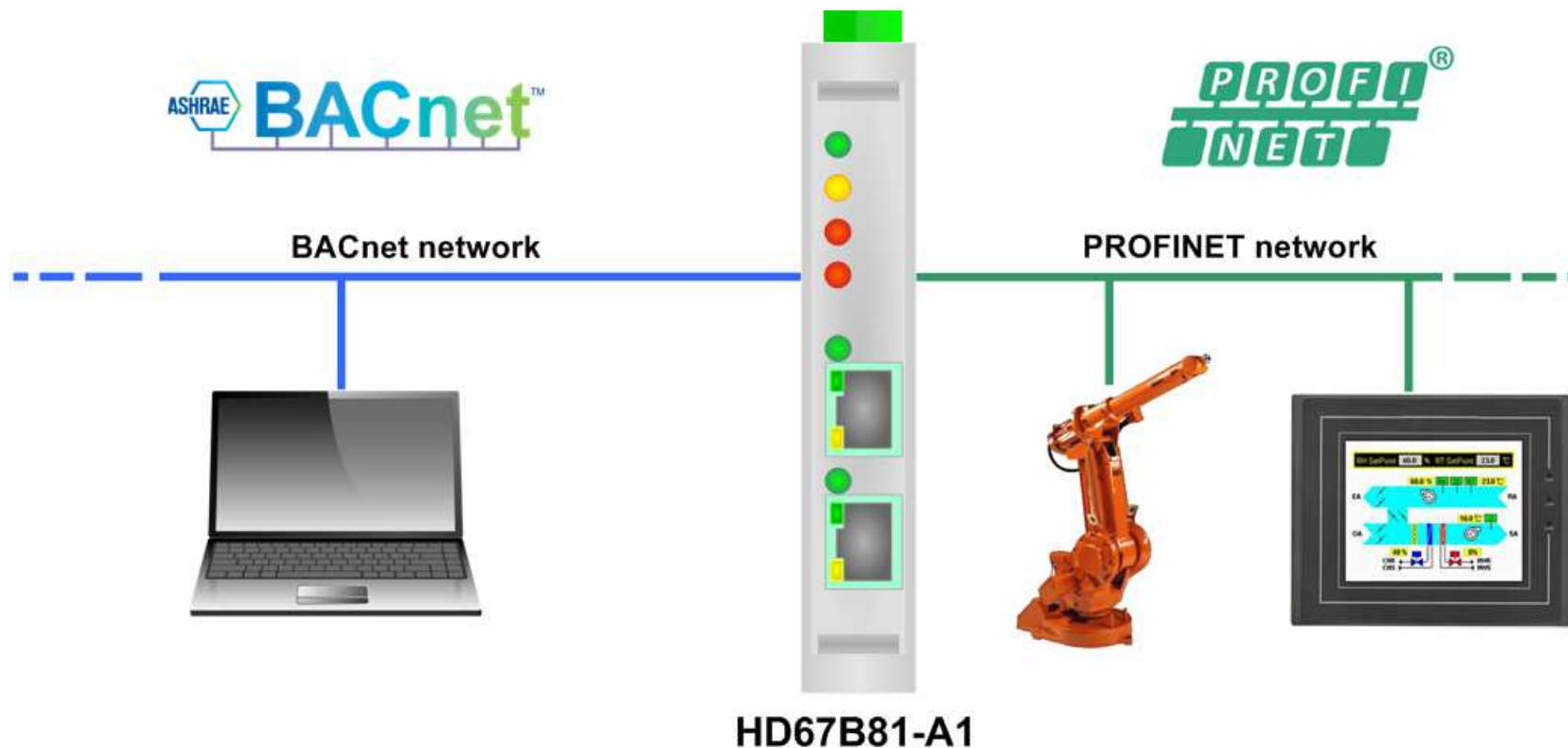


This symbol indicates that non-observance of the safety instructions is a danger for people that could lead to serious injury or death and / or the possibility of damage.

CE CONFORMITY

The declaration is made by our company. You can send an email to or give us a call if you need it.

EXAMPLE OF CONNECTION:



CONNECTION SCHEME:

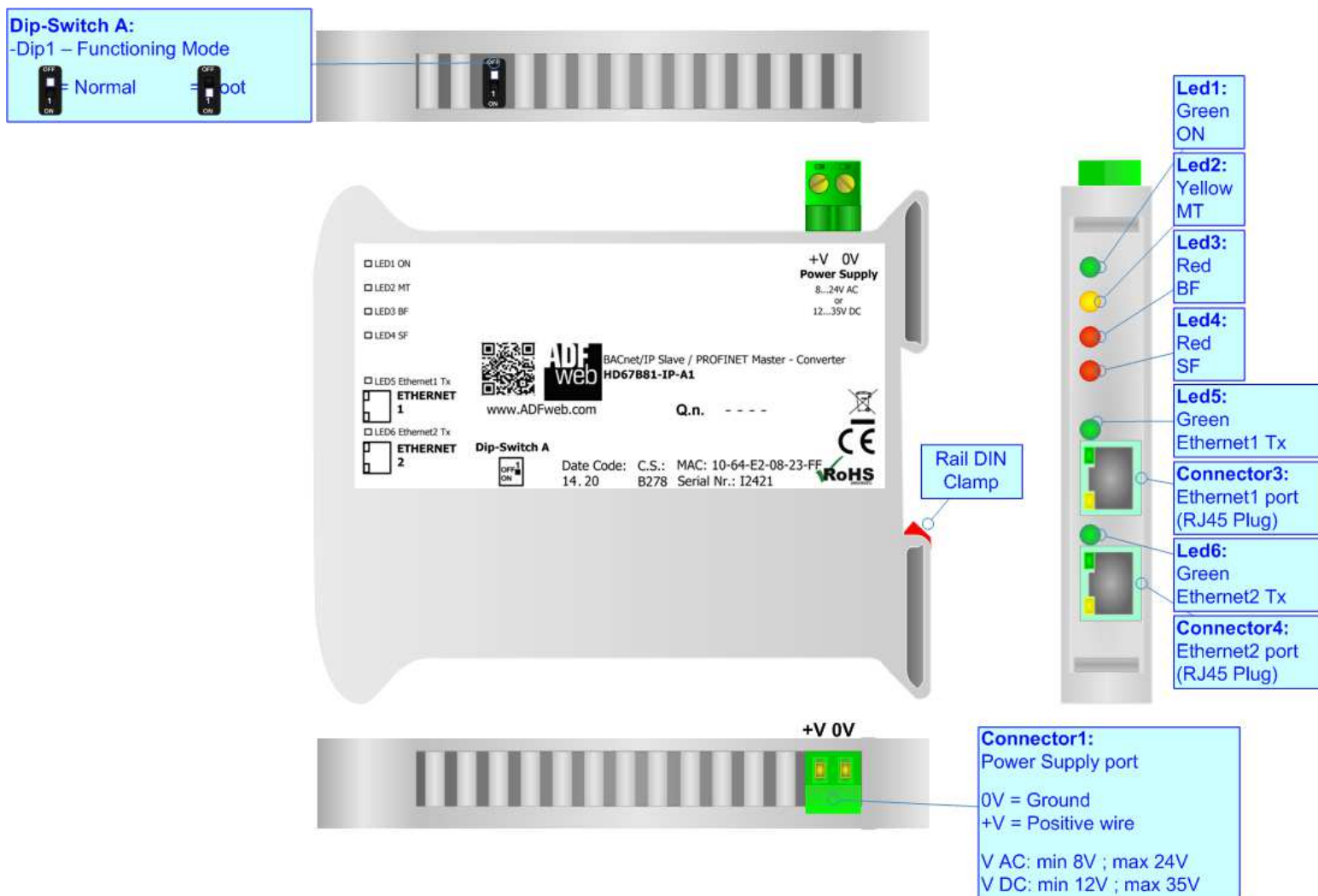


Figure 1a: Connection scheme for HD67B81-IP-A1

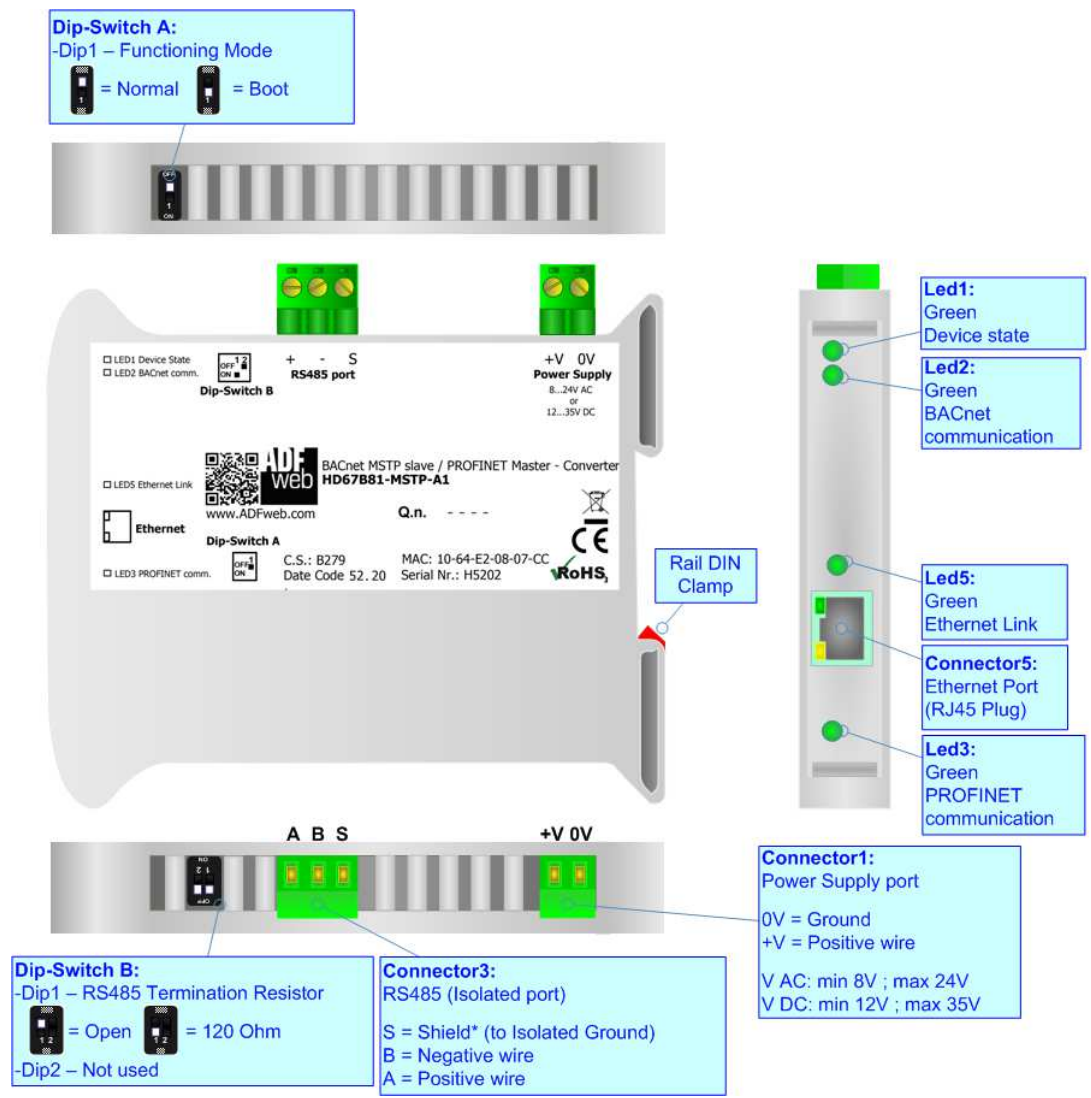


Figure 1b: Connection scheme for HD67B81-MSTP-A1

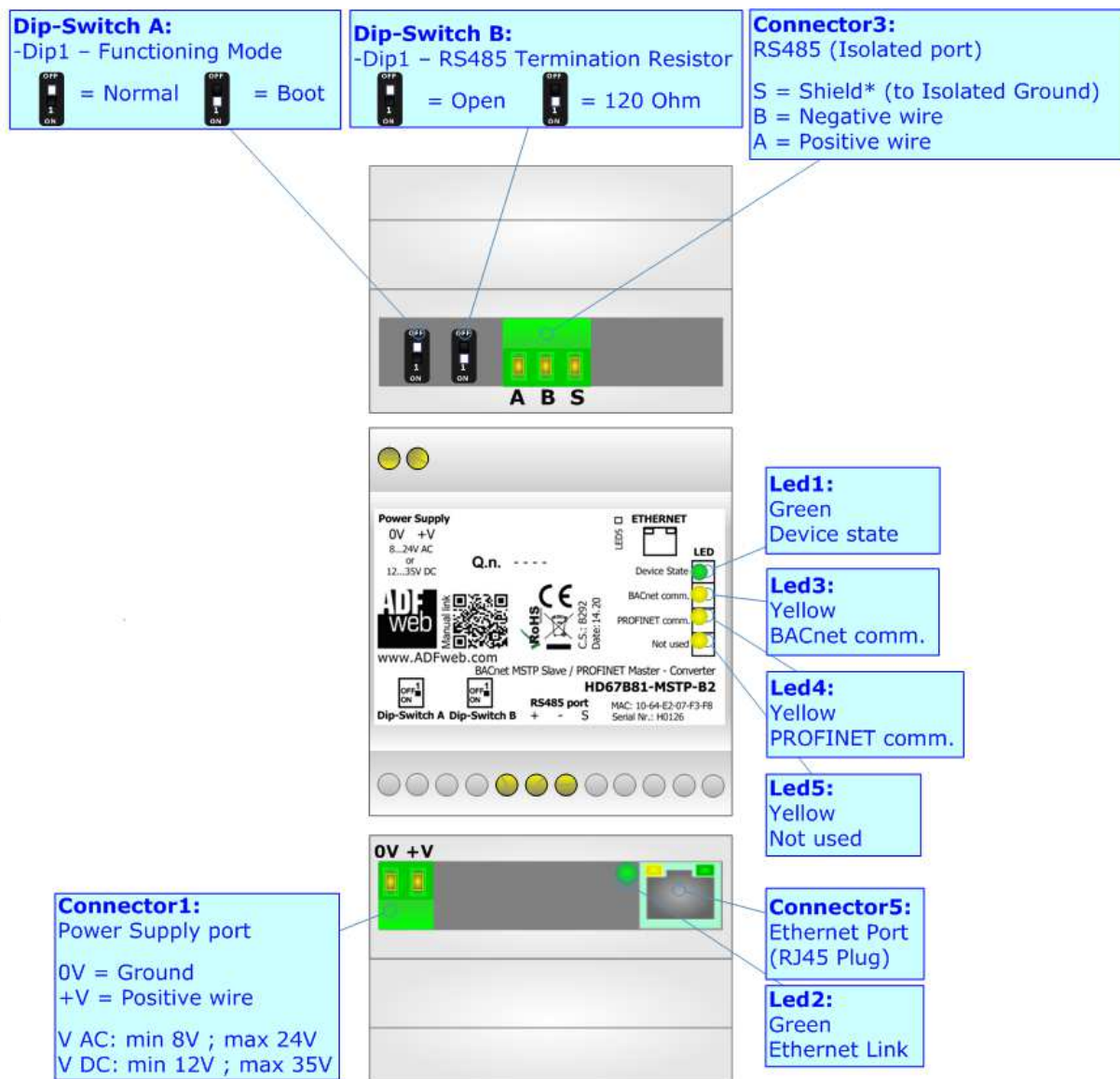


Figure 1c: Connection scheme for HD67B81-MSTP-B2

CHARACTERISTICS:

The HD67B81-xxx-A1/B2 is a BACnet Slave / PROFINET Master converter.

It allows the following characteristics:

- Triple isolation between RS485 - Power Supply, RS485 - Ethernet, Ethernet - Power Supply;
- Up to 1500 bytes in reading and 1500 bytes in writing;
- Two-directional information between PROFINET and BACnet;
- Mountable on 35mm Rail DIN;
- Wide power supply input range: 8...24V AC or 12...35V DC;
- Wide temperature range: -40°C / 85°C [-40°F / +185°F].

CONFIGURATION:

You need Compositor SW67B81 software on your PC in order to perform the following:

- Define the parameter of the BACnet;
- Define the parameter of the PROFINET;
- Define the list of PROFINET slaves connected to the converter;
- Define the list of BACnet objects available for reading and writing;
- Export the EDE file for BACnet;
- Update the device.

POWER SUPPLY:

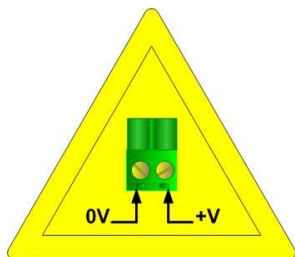
The devices can be powered between a wide range of tensions. For more details see the two tables below.

	VAC		VDC	
	Vmin	Vmax	Vmin	Vmax
HD67B81-xxx-A1/B2	8V	24V	12V	35V

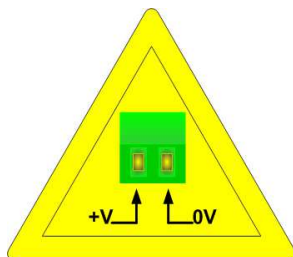
Consumption at 24V DC:

Device	W/VA
HD67B81-xxx-A1/B2	4

Caution: Not reverse the polarity power

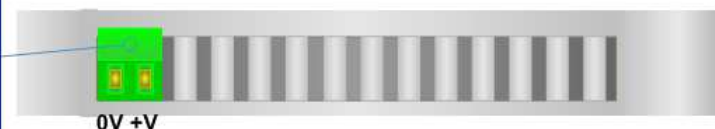


HD67B81-IP-A1
HD67B81-MSTP-A1

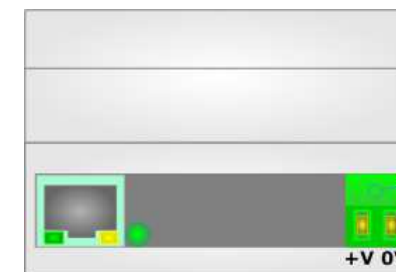
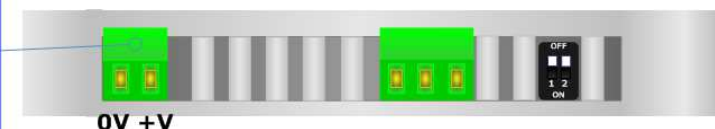


HD67B81-MSTP-B2

Connector1:
Power Supply port
0V = Ground
+V = Positive wire
V AC: min 8V ; max 24V
V DC: min 12V ; max 35V



Connector1:
Power Supply port
0V = Ground
+V = Positive wire
V AC: min 8V ; max 24V
V DC: min 12V ; max 35V



Connector1:
Power Supply port
0V = Ground
+V = Positive wire
V AC: min 8V ; max 24V
V DC: min 12V ; max 35V

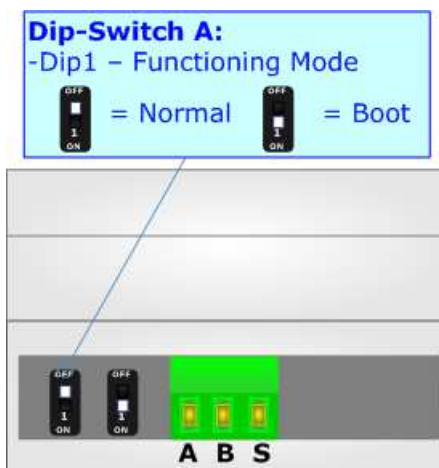
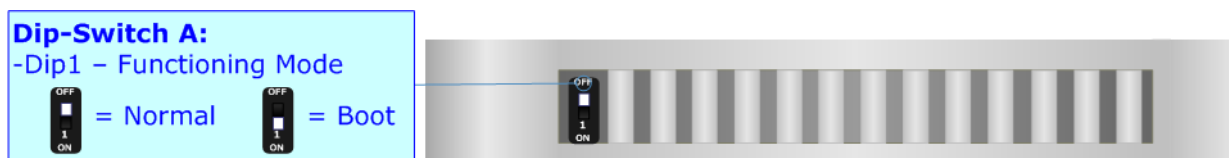
FUNCTION MODES:

The device has got two functions mode depending of the position of the Dip1 of 'Dip-Switch A':

- The first, with Dip1 in Off position (factory setting), is used for the normal working of the device.
- The second, with Dip1 in On position, is used for upload the Project/Firmware.

For the operations to follow for the updating (see 'UPDATE DEVICE' section).

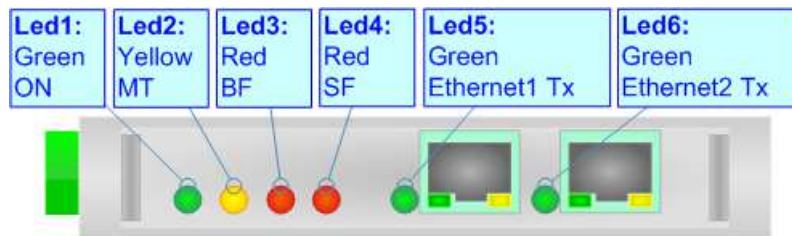
According to the functioning mode, the LEDs will have specifics functions (see 'LEDS' section).



LEDS (for HD67B81-IP-A1):

The device has got six LEDs that are used to give information of the functioning status. The various meanings of the LEDs are described in the table below.

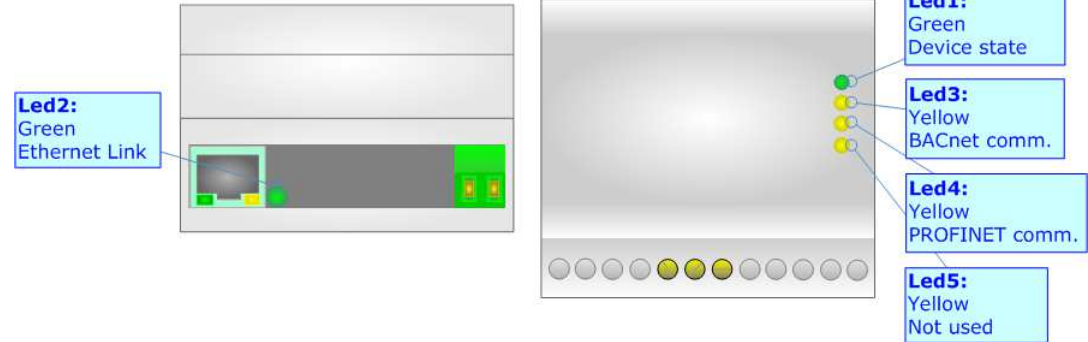
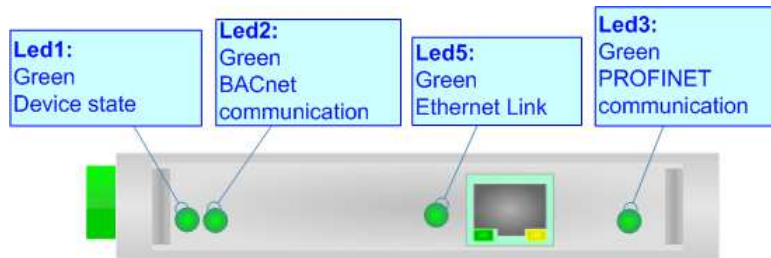
LED	Normal Mode	Boot Mode
1: ON [supply voltage] (green)	ON: Device powered OFF: Device not powered	ON: Device powered OFF: Device not powered
2: MT [maintenance display] (yellow)	ON: Maintenance are present OFF: No maintenance are present	Blinks quickly: Boot state Blinks very slowly (~0.5Hz): update in progress
3: BF [bus fault] (red)	ON: The Ethernet connection is defective; the IP address exists several times in the network; the own NameOfStation exists several times in the network; no IP address has been set Flashing: At least one configured AR is no longer in the data exchange OFF: No errors are present	Blinks quickly: Boot state Blinks very slowly (~0.5Hz): update in progress
4: SF [group error] (red)	ON: At least one AR is not in the data exchange OFF: No errors are present	Blinks quickly: Boot state Blinks very slowly (~0.5Hz): update in progress
5: Ethernet1 Tx (green)	Blinks when is transmitting Ethernet frames	Blinks quickly: Boot state Blinks very slowly (~0.5Hz): update in progress
6: Ethernet2 Tx (green)	Blinks when is transmitting Ethernet frames	Blinks quickly: Boot state Blinks very slowly (~0.5Hz): update in progress



LEDS (for HD67B81-MSTP-A1/B2):

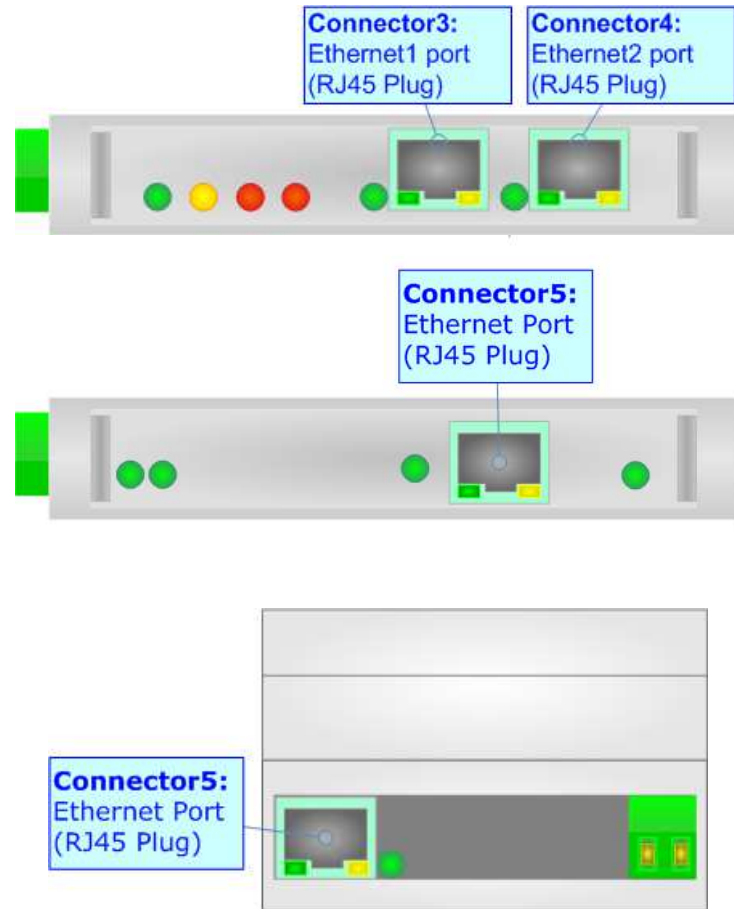
The device has got four LEDs (five the -B2 version) that are used to give information about the functioning status. The various meanings of the LEDs are described in the table below.

LED	Normal Mode	Boot Mode
1: Device State	Blinks slowly (~1Hz)	ON: Device powered OFF: Device not powered
2: BACnet comm.	Blinks quickly when receive BACnet requests	Blinks quickly: Boot state Blinks very slowly (~0.5Hz): update in progress
3: PROFINET comm.	Blinks quickly when PROFINET communication is running	Blinks quickly: Boot state Blinks very slowly (~0.5Hz): update in progress
4: Not used	OFF	Blinks quickly: Boot state Blinks very slowly (~0.5Hz): update in progress
5: Ethernet Link	ON: Ethernet cable connected OFF: Ethernet cable disconnected	Blinks quickly: Boot state Blinks very slowly (~0.5Hz): update in progress



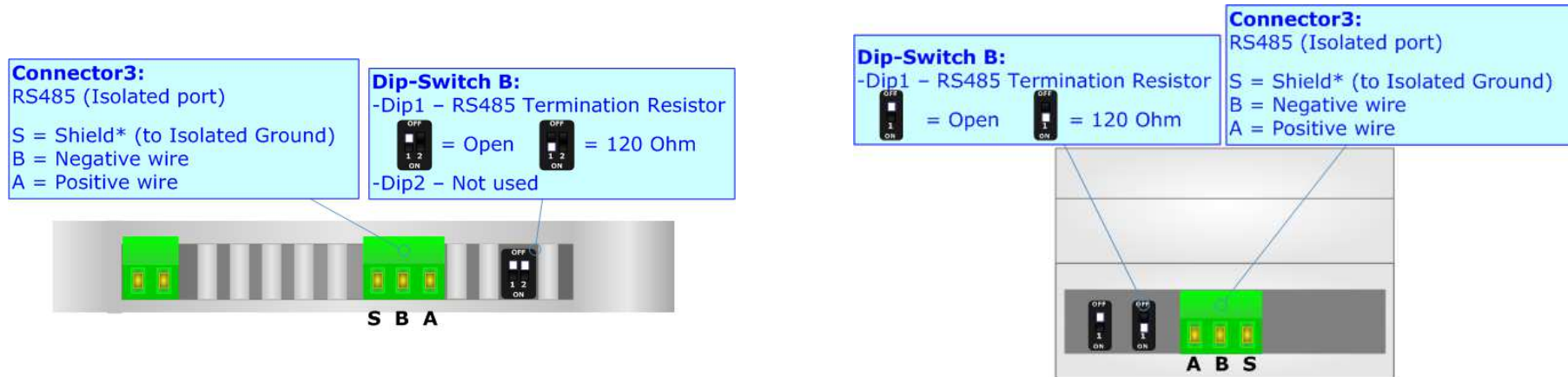
ETHERNET:

The Ethernet connection must be made using Connector3 of HD67B81-xxx-A1/B2 with at least a Category 5E cable. The maximum length of the cable should not exceed 100m. The cable has to conform to the T568 norms relative to connections in cat.5 up to 100 Mbps. To connect the device to an Hub/Switch is recommended the use of a straight cable, to connect the device to a PC/PLC/other is recommended the use of a cross cable.



RS485 (HD67B81-MSTP-A1/B2):

To terminate the RS485 line with a 120Ω resistor it is necessary to put ON dip 1, like in figure.



The maximum length of the cable should be 1200m (4000 feet).

Here some codes of cables:

- Belden: p/n 8132 - 2x 28AWG stranded twisted pairs conductor + foil shield + braid shield;
- Belden p/n 82842 - 2x 24AWG stranded twisted pairs conductor + foil shield + braid shield;
- Tasker: p/n C521 - 1x 24AWG twisted pair conductor + foil shield + braid shield;
- Tasker: p/n C522 - 2x 24AWG twisted pairs conductor + foil shield + braid shield.

USE OF COMPOSITOR SW67B81:

To configure the Converter, use the available software that runs with Windows called SW67B81. It is downloadable on the site www.adfweb.com and its operation is described in this document. *(This manual is referenced to the last version of the software present on our web site)*. The software works with MSWindows (XP, Vista, Seven, 8, 10; 32/64bit).

When launching the SW67B81, the window below appears (Fig. 2).



Note:

It is necessary to have installed .Net Framework 4.

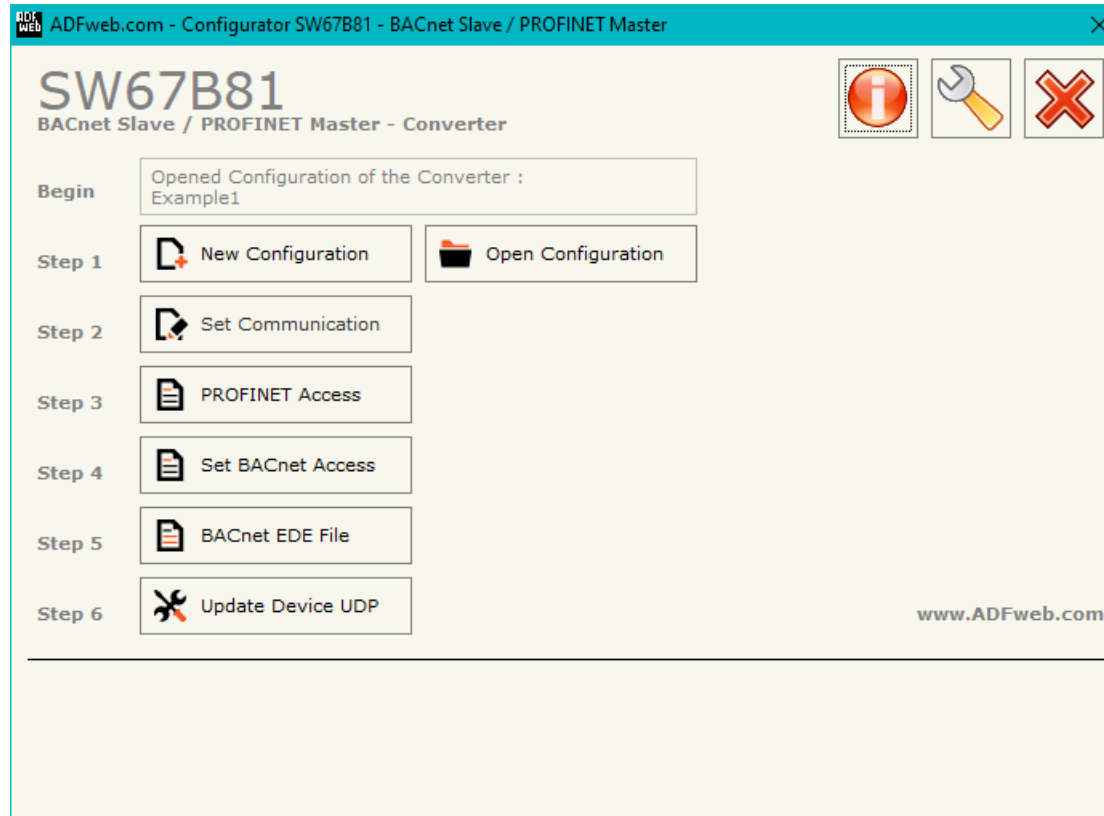
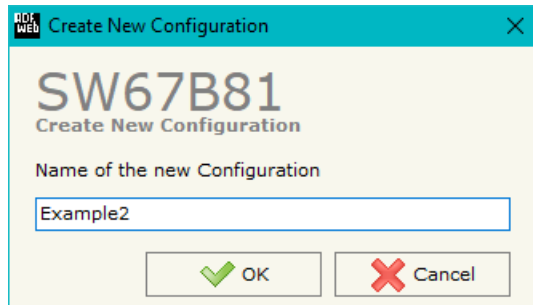


Figure 2: Main window for SW67B81

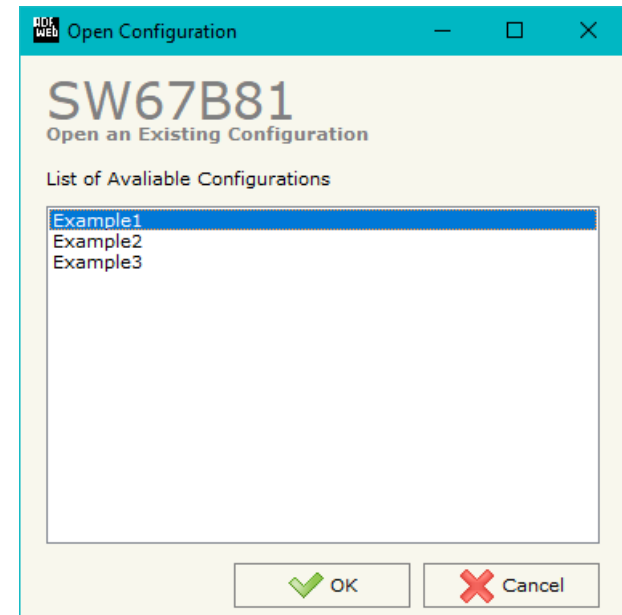
NEW CONFIGURATION / OPEN CONFIGURATION:

The “**New Configuration**” button creates the folder which contains the entire device’s configuration.




A device’s configuration can also be imported or exported:

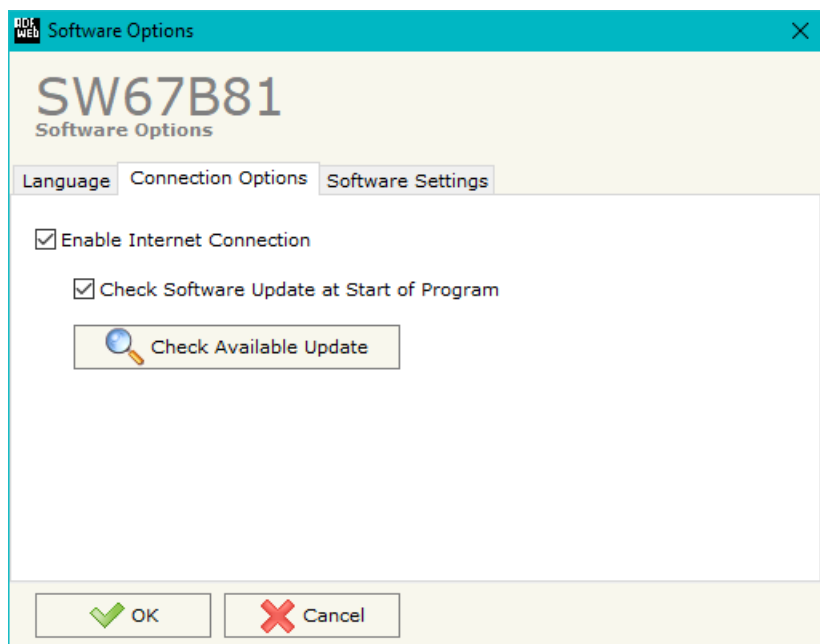
- To clone the configurations of a programmable “BACnet Slave / PROFINET Master - Converter” in order to configure another device in the same manner, it is necessary to maintain the folder and all its contents;
- To clone a project in order to obtain a different version of the project, it is sufficient to duplicate the project folder with another name and open the new folder with the button “**Open Configuration**”.



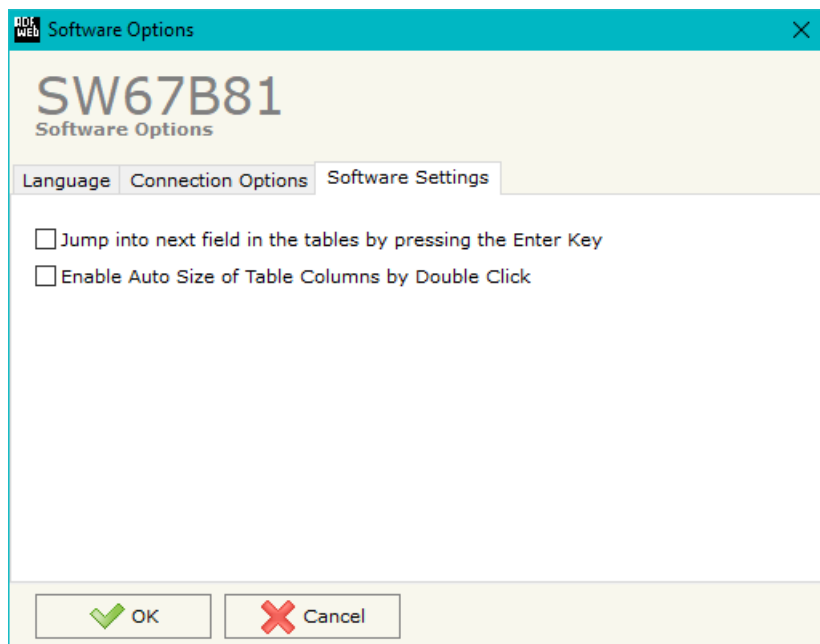
SOFTWARE OPTIONS:

By pressing the “**Settings**” () button there is the possibility to change the language of the software and check the updates for the compositor.

In the section “Language” it is possible to change the language of the software.



In the section “Connection Options”, it is possible to check if there are some updates of the software compositor in ADFweb.com website. Checking the option “**Check Software Update at Start of Program**”, the SW67B81 check automatically if there are updates when it is launched.



In the section "Software Settings", it is possible to enable/disable some keyboard's commands for an easier navigation inside the tables contained in the different sections of the software.

SET COMMUNICATION:

This section define the fundamental communication parameters of two buses, BACnet and PROFINET.

By Pressing the **"Set Communication"** button from the main window for SW67B81 (Fig. 2) the window "Set Communication" appears (Fig. 3).

The means of the fields for "PROFINET Master" are:

- In the fields **"IP Address"** the IP address for PROFINET side of the converter is defined;
- In the fields **"SubNet Mask"** the SubNet Mask for PROFINET side of the converter is defined;
- In the fields **"Gateway"** the default gateway of the net is defined. This feature can be enabled or disabled pressing the Check Box field. This feature is used for going out of the net;
- In the field **"Name of Station"** the name of the PROFINET node is defined.

If selected "BACnet/IP" the means of the fields for "BACnet Slave" are:

- In the fields **"IP Address"** the IP address for BACnet side of the converter is defined;
- In the fields **"SubNet Mask"** the SubNet Mask for BACnet side of the converter is defined;
- In the fields **"Gateway"** the default gateway of the net is defined. This feature can be enabled or disabled pressing the Check Box field. This feature is used for going out of the net;
- In the field **"Port"** the port used for BACnet communication is defined.
- In the field **"BACnet Device Name"** the name of BACnet side of the converter is defined;
- In the field **"Device Identifier"** the device instance of BACnet side of the converters is defined;
- If the field **"BACnet description up to 32 chars"** is checked, the description for the BACnet Objects can be up to 32 chars long.

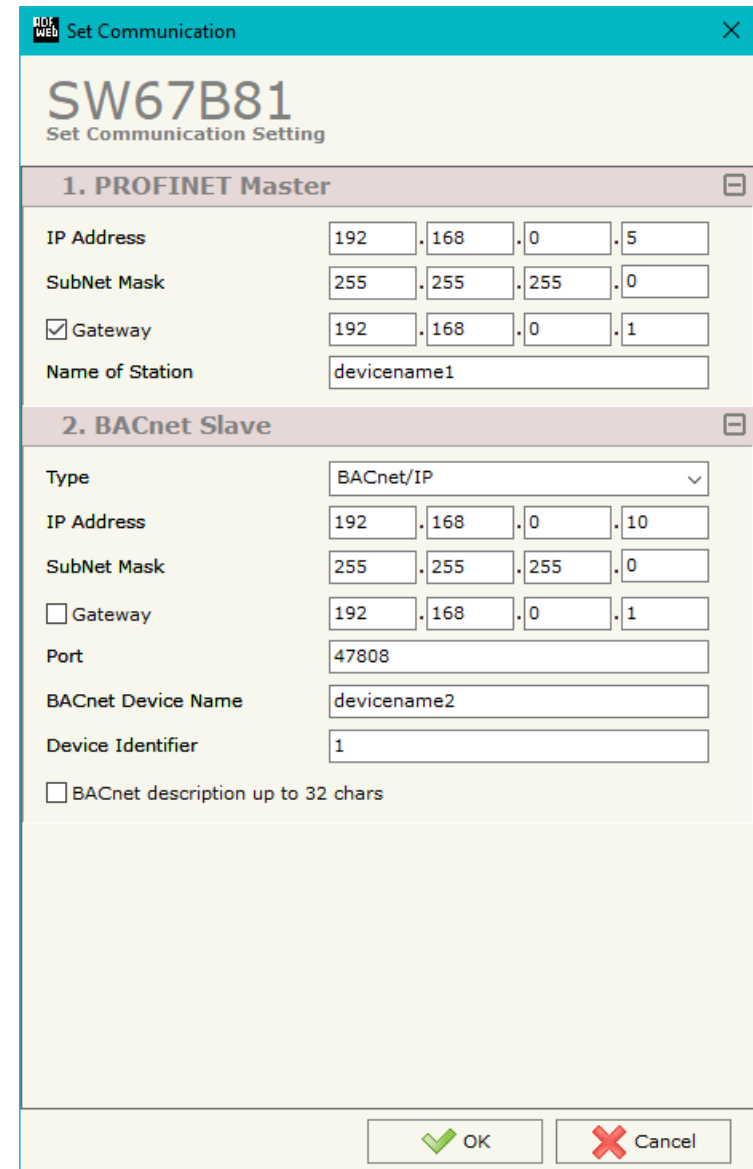
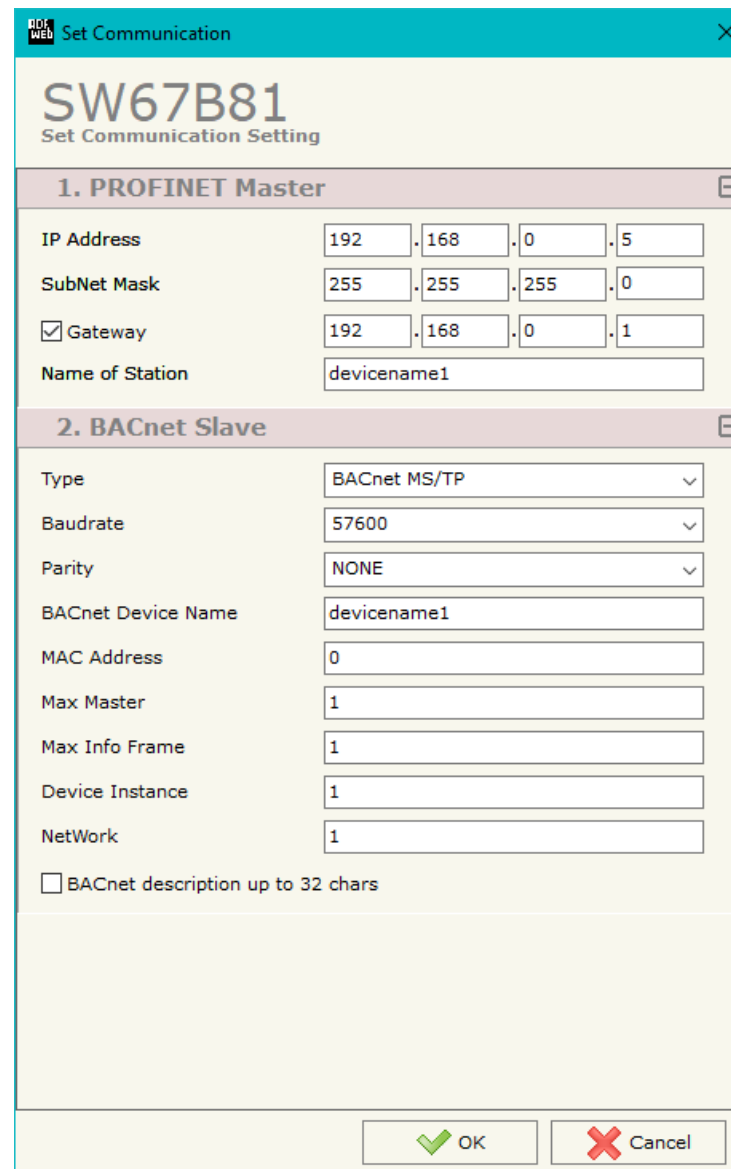


Figure 3: "Set Communication" window

If selected "BACnet MS/TP", the means of the fields for "BACnet" are:

- In the field "**Baudrate**" the baudrate of the BACnet line is defined;
- In the field "**Parity**" the parity of the BACnet line is defined;
- In the field "**BACnet Device Name**" the name of BACnet side of the converter is defined;
- In the field "**MAC Address**" the MAC of BACnet side of the converter is defined (from 0 to 254);
- In the field "**Max Master**" the highest allowable address for master nodes is defined. The value shall be less than or equal to 127;
- In the field "**Max Info Frames**" the maximum number of information frames the node may send before it must pass the token is defined;
- In the field "**Device Identifier**" the device instance of BACnet side of the converters is defined;
- In the field "**Network**" the BACnet MS/TP network number is defined;
- If the field "**BACnet description up to 32 chars**" is checked, the description for the BACnet Objects can be up to 32 chars long.



1. PROFINET Master	
IP Address	192 . 168 . 0 . 5
SubNet Mask	255 . 255 . 255 . 0
<input checked="" type="checkbox"/> Gateway	192 . 168 . 0 . 1
Name of Station	devicename1

2. BACnet Slave	
Type	BACnet MS/TP
Baudrate	57600
Parity	NONE
BACnet Device Name	devicename1
MAC Address	0
Max Master	1
Max Info Frame	1
Device Instance	1
NetWork	1
<input type="checkbox"/> BACnet description up to 32 chars	

PROFINET ACCESS:

By Pressing the “**PROFINET Access**” button from the main window for SW67B81 (Fig. 2) the window “Definition of PROFINET Devices Present in Network” appears (Fig. 4).

This section is used to define the list of the PROFINET slaves to read/write with the PROFINET Master. It is possible to add the PROFINET slaves from the hardware catalog. If a new device will be connected, it is possible to instal the GSDML file.

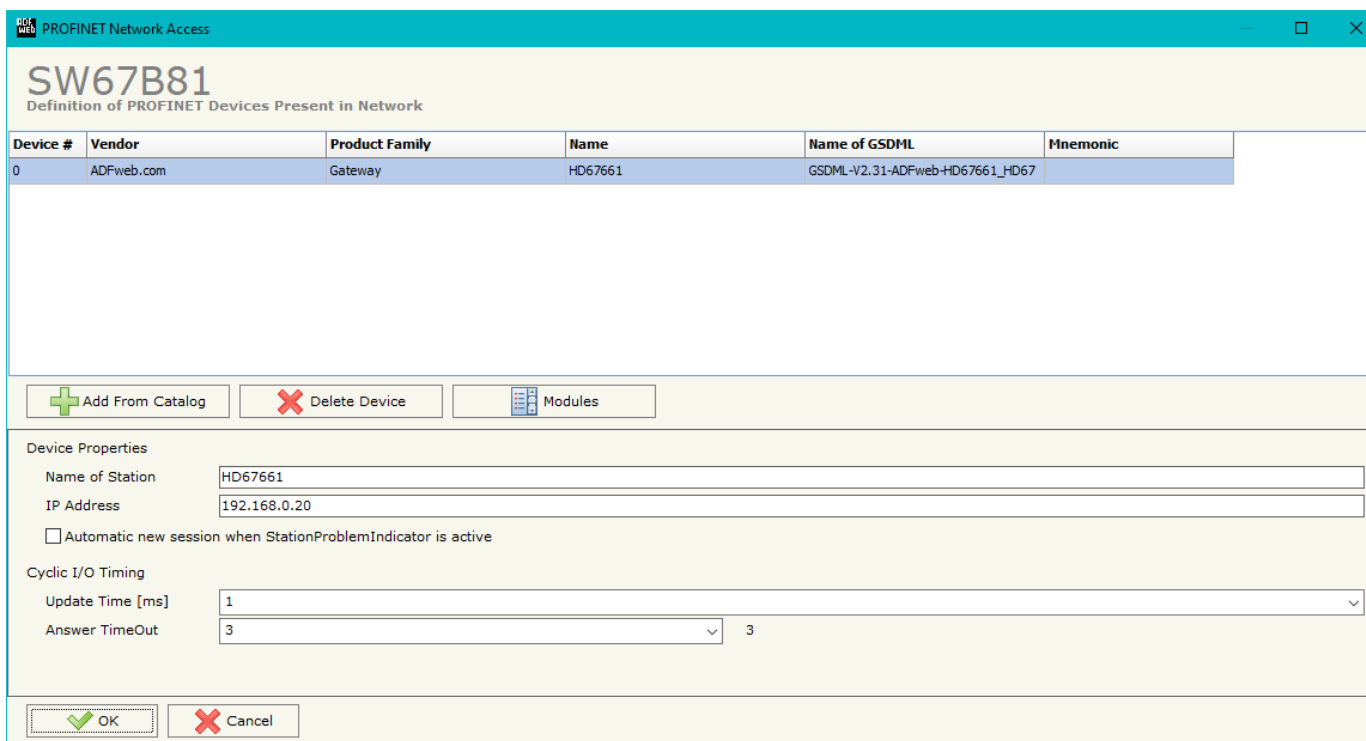



Figure 4: “Definition of PROFINET Devices Present in Network” window

The means of the fields below are:

- In the field "**Name of Station**" is checked, the name of the PROFINET slave is defined;
- In the field "**IP Address**" the IP Address of the PROFINET slave is defined;
- If the field "**Automatic new session when StationProblemIndicator is Active**" is checked, the converter opens a new communication session when an error is present in the slave station;
- In the field "**Update Time [ms]**" the delay used for IO communication is defined;
- In the field "**Answer TimeOut**" the allowed number of cycles without response from the slave is defined.

 Warning: The data from/to the slaves are mapped consecutively into the IN/OUT PROFINET arrays, following the order with which they are defined.

By clicking on “**Modules**” button, it is possible to import the modules for the selected PROFINET slave device. The window “Definition Module and/or Submodules of PROFINET Device” appears (Fig. 5). In the main table it is possible to import the Modules of the PROFINET device in use. In the properties below, it is possible to set the parameters of the slave. These options depends on the slave in use, refer to the manual of the PROFINET device.

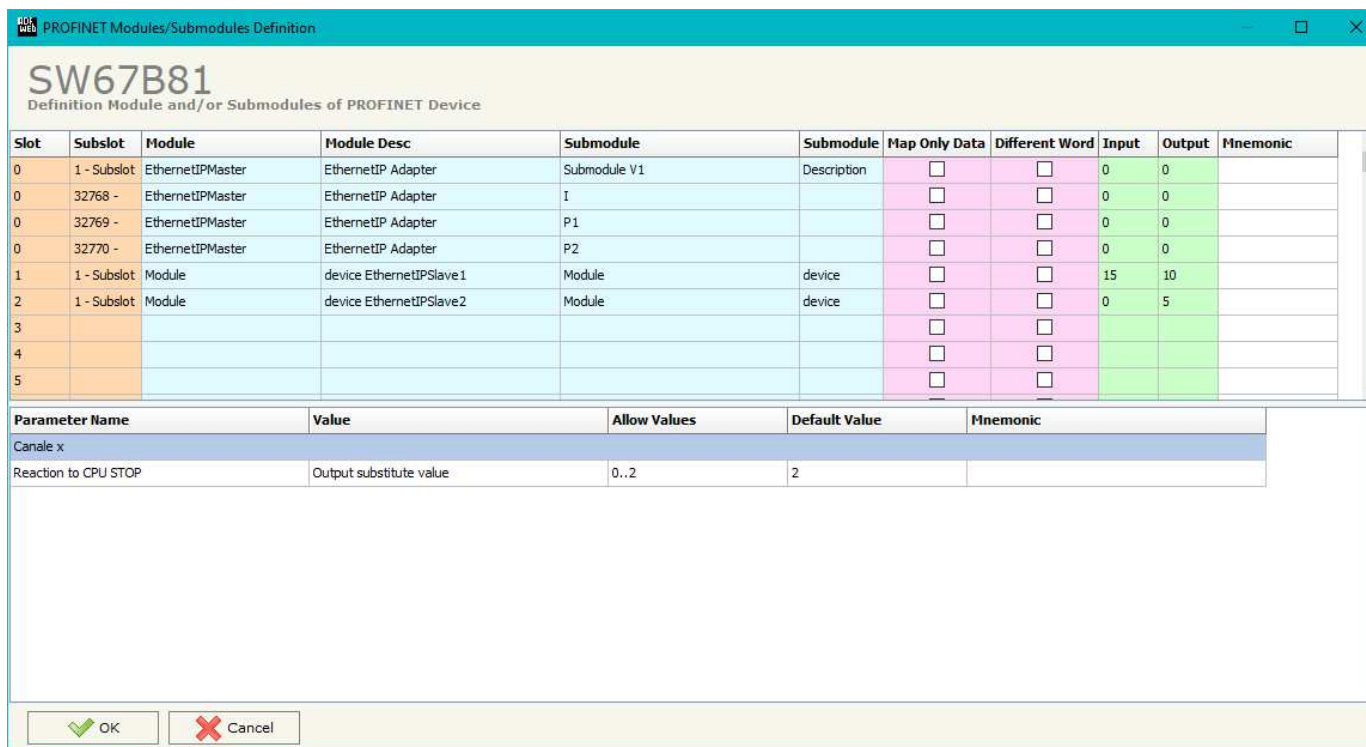


Figure 5: “Definition Module and/or Submodules of PROFINET Device” window

The means of the checkboxes inside the table are:

- If the field “**Map Only Data**” is checked, only the data of the modules are mapped into the BACnet map. Otherwise, for each module there will be the status of IN and OUT areas too (1 byte);
- If the field “**Different Word**” is checked, the data of the different modules are mapped in different and consecutive words.

SET BACNET ACCESS:

By Pressing the “**Set BACnet Access**” button from the main window for SW67B81 (Fig. 2) the window “BACnet Set Access” appears (Fig. 6).

The window is divided in two parts, the “BACnet in Read” that contains the BACnet objects readable by a BACnet Master (the PROFINET data associated to these objects are read from PROFINET slaves); and “BACnet in Write” that contains the BACnet objects writeable by a BACnet Master (the PROFINET data associated to these objects are written to PROFINET slaves).

The meaning of the fields in the window are the follows:

- In the field “**Data Type**” it is possible to select the BACnet object data type;
- In the field “**Eng. Unit**”, with double click the window “*Select the BACnet Engineering Unit*” appears (Fig. 7);
- In the field “**Position**” it is possible to select the position where take/save the data from PROFINET array;
- The field “**Start Bit**” it is used for binary objects;
- The field “**Length**” it is used for all the others BACnet objects (on “BACnet in Write” this field isn’t editable);
- In the field “**Mnemonic**” a description of the object is defined.



Notes:

The “BACnet in Write” objects are also readable.

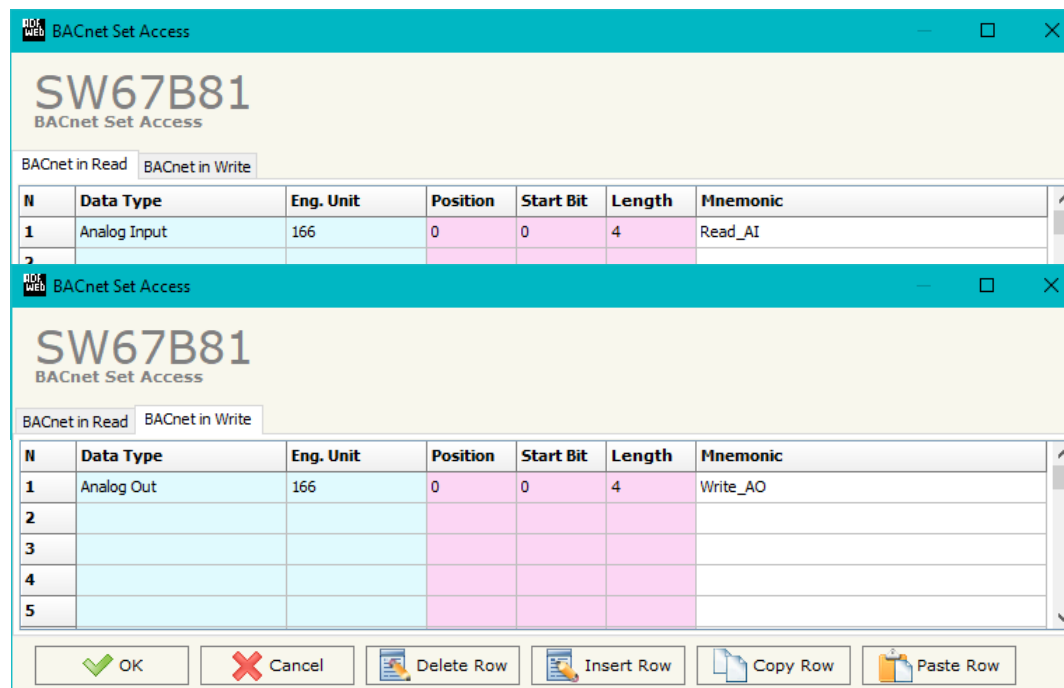
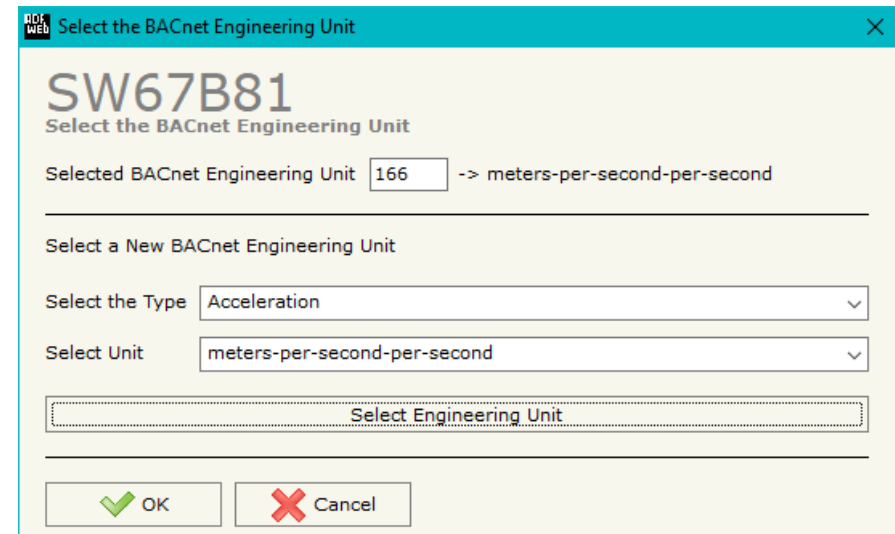


Figure 6: “BACnet Set Access” window

It is possible to insert directly the Unit (using its unique number) by compiling the **"Selected BACnet Engineering Unit"** field; or by selecting with the fields **"Select the Type"** and **"Select unit"** the Type/Unit desired. If the second way is used, is necessary to press the **"Select Engineering Unit"** button for confirm the choice.



The screenshot shows a dialog box titled "Select the BACnet Engineering Unit" for device "SW67B81". The dialog displays the "Selected BACnet Engineering Unit" as "166" with a corresponding unit of "meters-per-second-per-second". Below this, there is a section for "Select a New BACnet Engineering Unit" with two dropdown menus: "Select the Type" set to "Acceleration" and "Select Unit" set to "meters-per-second-per-second". A button labeled "Select Engineering Unit" is positioned below these dropdowns. At the bottom of the dialog, there are two buttons: "OK" (with a green checkmark icon) and "Cancel" (with a red X icon).

Figure 7: "Select the BACnet Engineering Unit" window

BACNET EDE FILE:

By Pressing the **"BACNET EDE FILE"** button from the main window for SW67B81 (Fig. 2) it is possible to generate the EDE file to be imported into the BACnet Master.

UPDATE DEVICE:

By pressing the **“Update Device”** button, it is possible to load the created Configuration into the device; and also the Firmware, if necessary. This by using the Ethernet port.

If you don't know the actual IP address of the device you have to use this procedure:

- Turn OFF the Device;
- Put Dip1 of 'Dip-Switch A' in ON position;
- Turn ON the device
- Connect the Ethernet cable;
- Insert the IP **“192.168.2.205”**;
- Select which operations you want to do;
- Press the **“Execute update firmware”** button to start the upload;
- When all the operations are “OK” turn OFF the Device;
- Put Dip1 of 'Dip-Switch A' in OFF position;
- Turn ON the device.

If you know the actual IP address of the device, you have to use this procedure:

- Turn ON the Device with the Ethernet cable inserted;
- Insert the actual IP of the Converter;
- Select which operations you want to do;
- Press the **“Execute update firmware”** button to start the upload;
- When all the operations are “OK” the device automatically goes at Normal Mode.

At this point the configuration/firmware on the device is correctly updated.

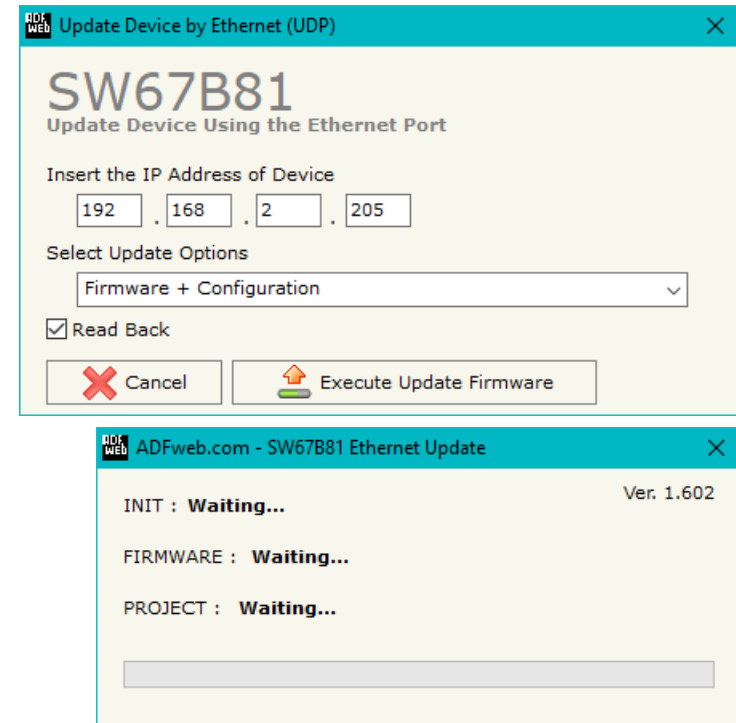


Figure 8: “Update device” windows

**Note:**

When you receive the device, for the first time, you also have to update the Firmware in the HD67B81 device.

**Warning:**

If Fig. 9 appears when you try to do the Update try these points before seeking assistance:

- Try to repeat the operations for the updating;
- Try with another PC;
- Try to restart the PC;
- Check the LAN settings;
- If you are using the program inside a Virtual Machine, try to use in the main Operating System;
- If you are using Windows Seven, Vista, 8 or 10 make sure that you have the administrator privileges;
- In case you have to program more than one device, using the "UDP Update", you have to cancel the ARP table every time you connect a new device on Ethernet. For do this you have to launch the "Command Prompt" and write the command "arp -d". Pay attention that with Windows Vista, Seven, 8, 10 you have to launch the "Command Prompt" with Administrator Rights;
- Pay attention at Firewall lock.

**Warning:**

In the case of HD67B81 you have to use the software "SW67B81": www.adfweb.com/download/filefold/SW67B81.zip.

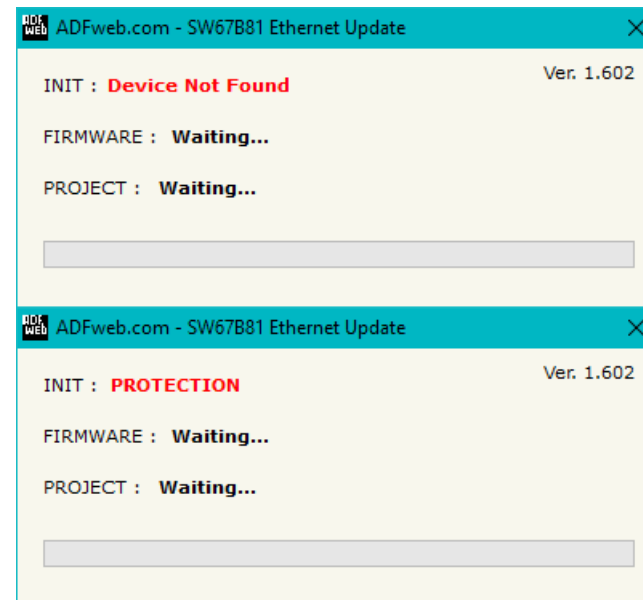
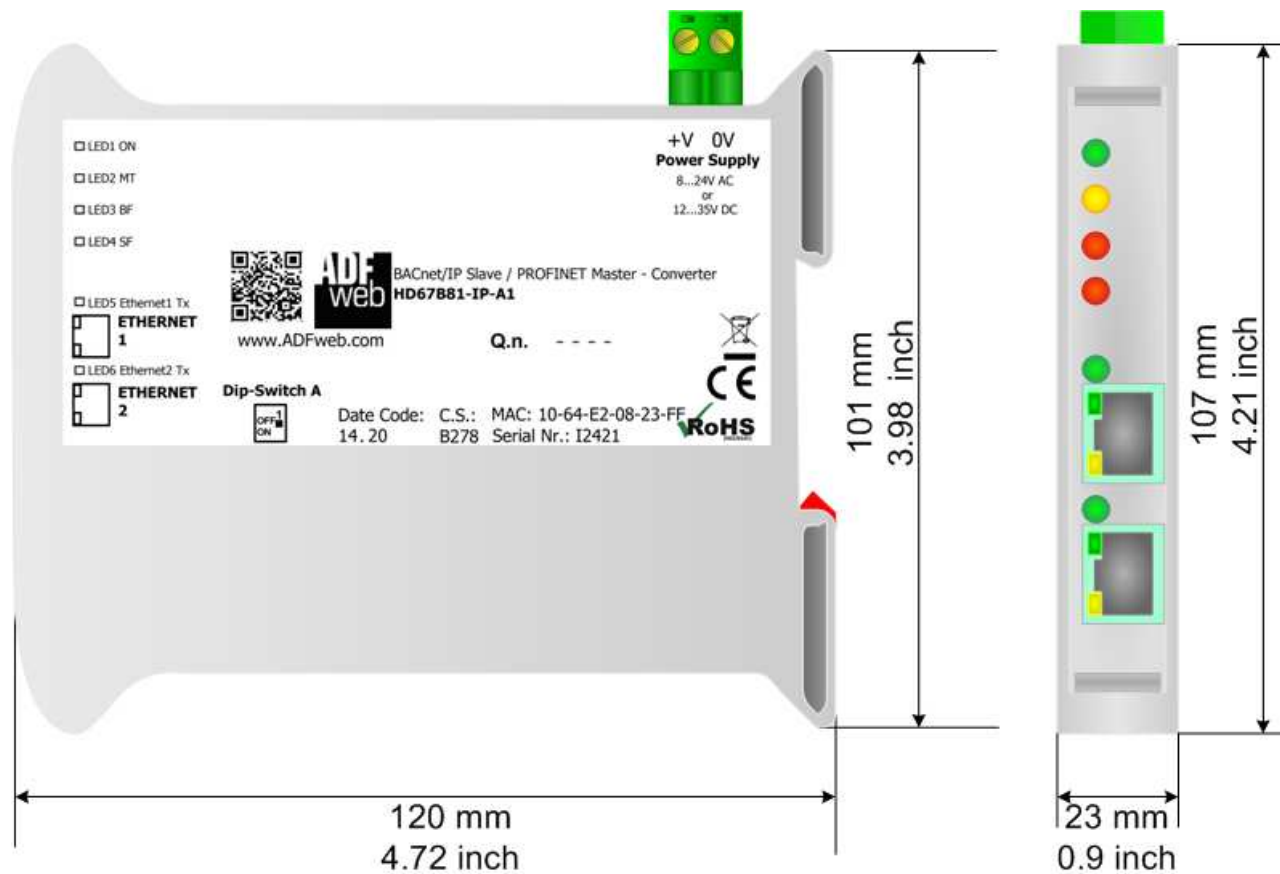


Figure 9: "Error" window

MECHANICAL DIMENSIONS:



Housing: PVC
 Weight: 200g (Approx)

Figure 10a: Mechanical dimensions scheme for HD67B81-IP-A1

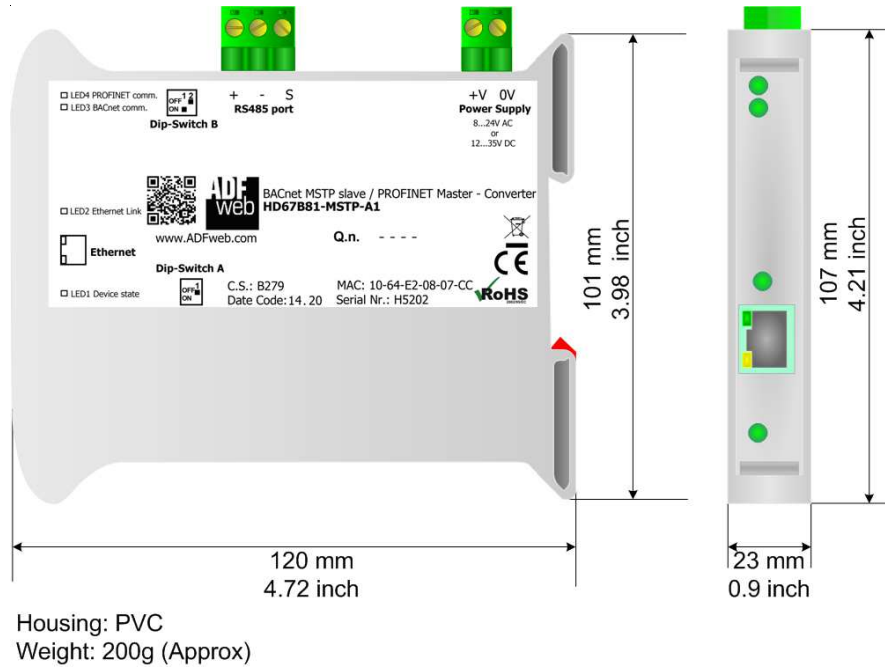


Figure 10b: Mechanical dimensions scheme for HD676B81-MSTP-A1

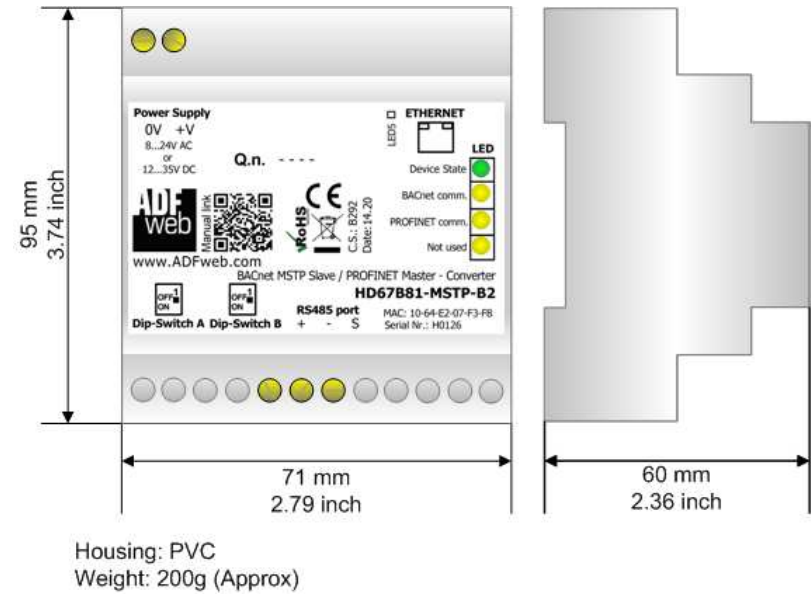
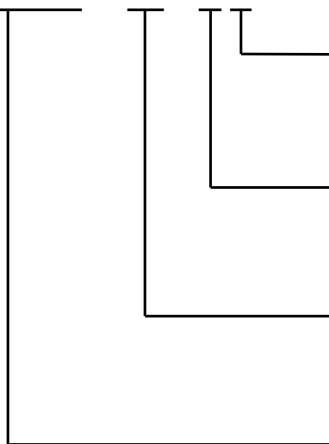


Figure 10c: Mechanical dimensions scheme for HD67B81-MSTP-B2

ORDERING INFORMATIONS:

The ordering part number is formed by a valid combination of the following:

HD67B81 - xxx - xx



Connectors Type

- 1: Removable 5mm Screw Terminal
- 2: Fixed 5mm Screw Terminal

Enclosure Type

- A: 1M, 35mm DIN Rail mounting
- B: 4M, 35mm DIN Rail mounting

BACnet type

- IP: BACnet/IP
- MSTP: BACnet MS/TP

Device Family

HD67B81: BACnet Slave / PROFINET Master - Converter

- Order Code: **HD67B81-IP-A1** - BACnet/IP Slave / PROFINET Master - Converter
- Order Code: **HD67B81-MSTP-A1** - BACnet MS/TP Slave / PROFINET Master - Converter
- Order Code: **HD67B81-MSTP-B2** - BACnet MS/TP Slave / PROFINET Master - Converter

ACCESSORIES:

- Order Code: **AC34011** - 35mm Rail DIN - Power Supply 220/240V AC 50/60Hz - 12 V DC
- Order Code: **AC34012** - 35mm Rail DIN - Power Supply 220/240V AC 50/60Hz - 24 V DC

DISCLAIMER:

All technical content within this document can be modified without notice. The content of the document is a under continual renewal. For losses due to fire, earthquake, third party access or other accidents, or intentional or accidental abuse, misuse, or use under abnormal conditions repairs are charged to the user. ADFweb.com S.r.l. will not be liable for accidental loss of use or inability to use this product, such as loss of business income. ADFweb.com S.r.l. shall not be liable for consequences of improper use.

OTHER REGULATIONS AND STANDARDS:**WEEE INFORMATION**

Disposal of old electrical and electronic equipment (as in the European Union and other European countries with separate collection systems).

— This symbol on the product or on its packaging indicates that this product may not be treated as household rubbish. Instead, it should be taken to an applicable collection point for the recycling of electrical and electronic equipment. If the product is disposed correctly, you will help prevent potential negative environmental factors and impact of human health, which could otherwise be caused by inappropriate disposal. The recycling of materials will help to conserve natural resources. For more information about recycling this product, please contact your local city office, your household waste disposal service or the shop where you purchased the product.

RESTRICTION OF HAZARDOUS SUBSTANCES DIRECTIVE

The device respects the 2002/95/EC Directive on the restriction of the use of certain hazardous substances in electrical and electronic equipment (commonly referred to as Restriction of Hazardous Substances Directive or RoHS).

CE MARKING

The product conforms with the essential requirements of the applicable EC directives.

WARRANTIES AND TECHNICAL SUPPORT:

For fast and easy technical support for your ADFweb.com SRL products, consult our internet support at www.adfweb.com. Otherwise contact us at the address support@adfweb.com

RETURN POLICY:

If while using your product you have any problem and you wish to exchange or repair it, please do the following:

- ➔ Obtain a Product Return Number (PRN) from our internet support at www.adfweb.com. Together with the request, you need to provide detailed information about the problem.
- ➔ Send the product to the address provided with the PRN, having prepaid the shipping costs (shipment costs billed to us will not be accepted).

If the product is within the warranty of twelve months, it will be repaired or exchanged and returned within three weeks. If the product is no longer under warranty, you will receive a repair estimate.

