

User Manual

Revision 1.000
English

EnOcean / Modbus Slave - Converter

(Order Code: HD67C52-2-B2, HD67C52-5-B2)

Benefits

- ⊕ Very easy to configure
- ⊕ Power Supply 18...35V DC and 8...24 V AC
- ⊕ Temperature range: -40°C/+85°C (-40°F/+185°F)



INDEX:

	Page
INDEX	2
UPDATED DOCUMENTATION	2
REVISION LIST	2
WARNING	2
TRADEMARKS	2
SECURITY ALERT	3
EXAMPLE OF CONNECTION	4
CONNECTION SCHEME	5
CHARACTERISTICS	7
CONFIGURATION	7
POWER SUPPLY	8
FUNCTION MODES	9
LEDS	10
ETHERNET	11
ENOCEAN	12
RS232	13
RS485	14
USE OF COMPOSITOR SW67C52	15
NEW CONFIGURATION / OPEN CONFIGURATION	16
SOFTWARE OPTIONS	17
SET COMMUNICATION	19
ENOCEAN ACCESS	20
UPDATE DEVICE	23
MODBUS MAP	25
MECHANICAL DIMENSIONS	27
ORDERING INFORMATIONS	28
ACCESSORIES	28
DISCLAIMER	29
OTHER REGULATIONS AND STANDARDS	29
WARRANTIES AND TECHNICAL SUPPORT	30
RETURN POLICY	30

UPDATED DOCUMENTATION:

Dear customer, we thank you for your attention and we remind you that you need to check that the following document is:

- ✚ Updated
- ✚ Related to the product you own

To obtain the most recently updated document, note the “document code” that appears at the top right-hand corner of each page of this document.

With this “Document Code” go to web page www.adfweb.com/download/ and search for the corresponding code on the page. Click on the proper “Document Code” and download the updates.

REVISION LIST:

Revision	Date	Author	Chapter	Description
1.000	05/12/2019	Ff	All	First release version

WARNING:

ADFweb.com reserves the right to change information in this manual about our product without warning.
ADFweb.com is not responsible for any error this manual may contain.

TRADEMARKS:

All trademarks mentioned in this document belong to their respective owners.

SECURITY ALERT:**GENERAL INFORMATION**

To ensure safe operation, the device must be operated according to the instructions in the manual. When using the device, legal and safety regulation are required for each individual application. The same applies also when using accessories.

INTENDED USE

Machines and systems must be designed so the faulty conditions do not lead to a dangerous situation for the operator (i.e. independent limit switches, mechanical interlocks, etc.).

QUALIFIED PERSONNEL

The device can be used only by qualified personnel, strictly in accordance with the specifications. Qualified personnel are persons who are familiar with the installation, assembly, commissioning and operation of this equipment and who have appropriate qualifications for their job.

RESIDUAL RISKS

The device is state-of-the-art and is safe. The instruments can represent a potential hazard if they are inappropriately installed and operated by untrained personnel. These instructions refer to residual risks with the following symbol:



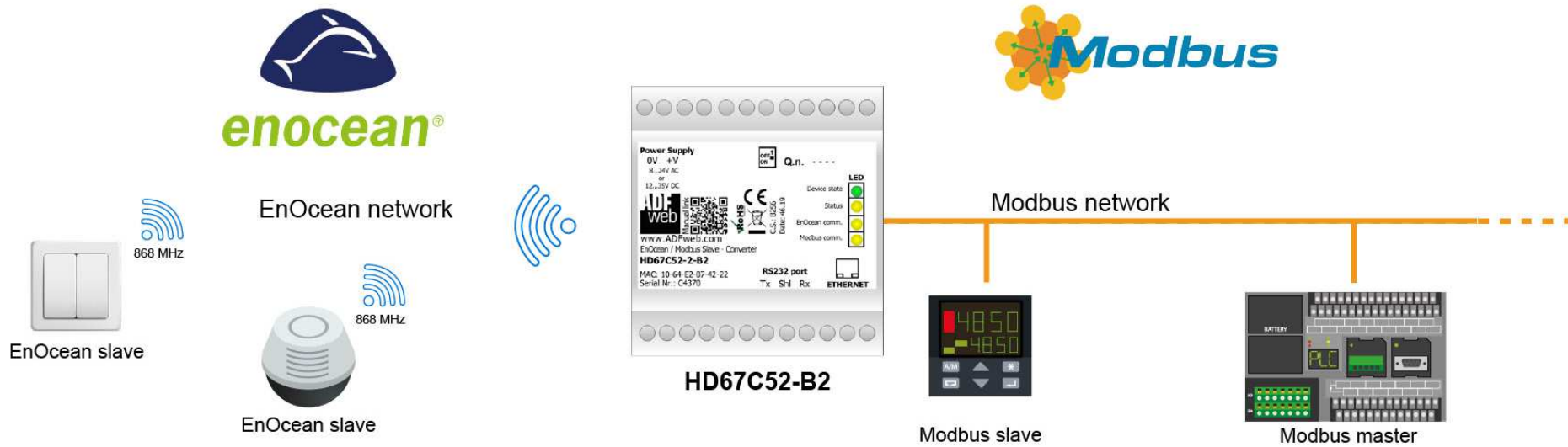
This symbol indicates that non-observance of the safety instructions is a danger for people that could lead to serious injury or death and / or the possibility of damage.

CE CONFORMITY

The declaration is made by our company. You can send an email to [or](#) give us a call if you need it.

EXAMPLE OF CONNECTION:

EnOcean / Modbus - Converter HD67C52-B2



ADFweb.com



+39 0438 309 131



+39 349 440 9592



support@adfweb.com

CONNECTION SCHEME:

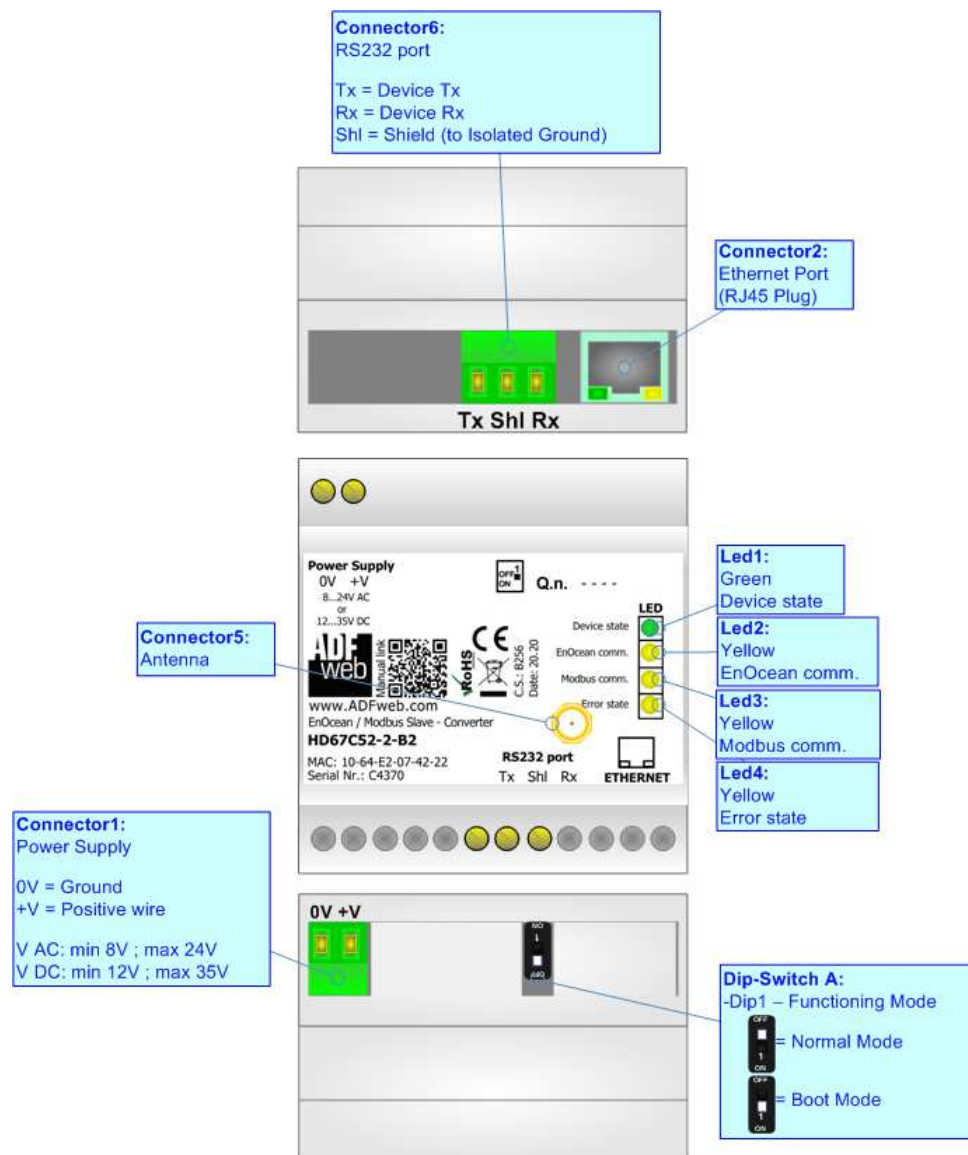


Figure 1a: Connection scheme for HD67C52-2-B2

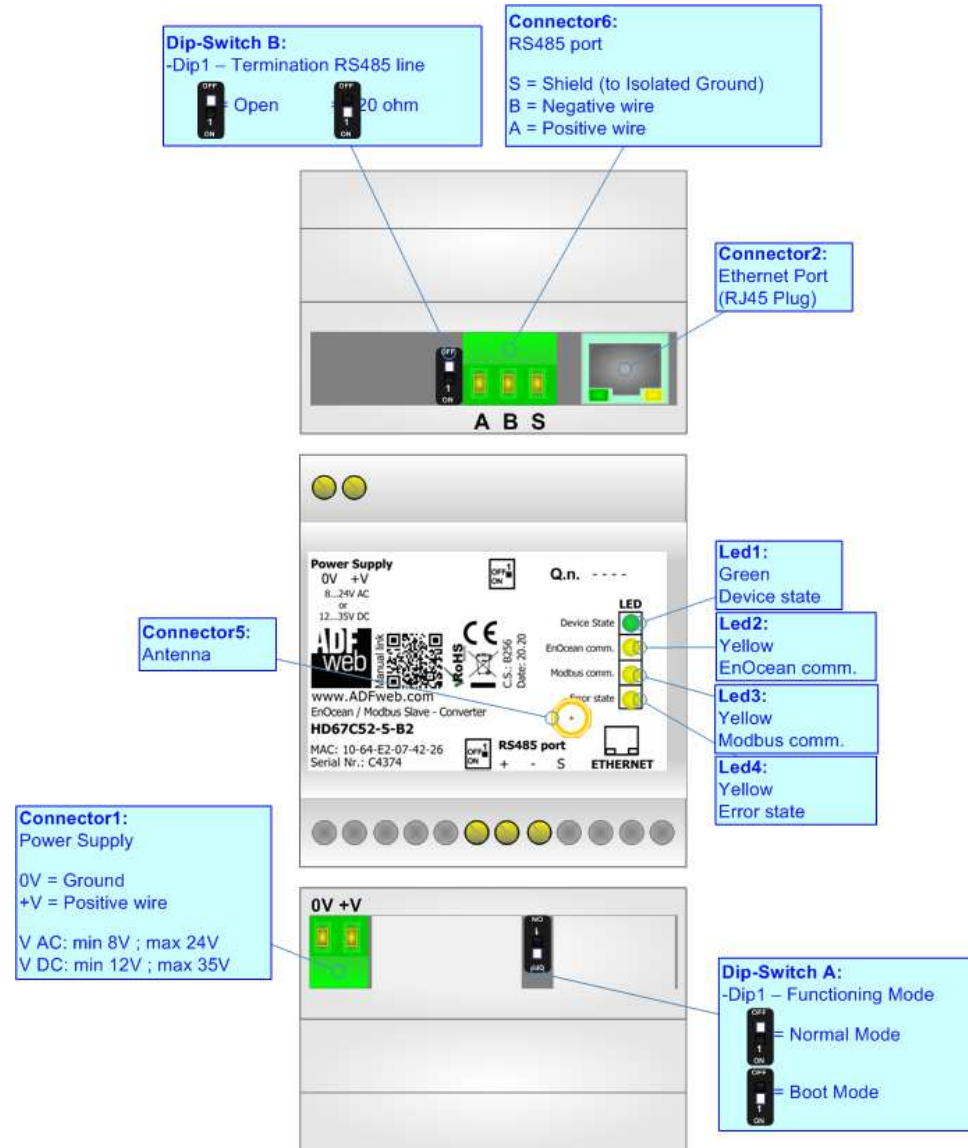


Figure 1b: Connection scheme for HD67C52-5-B2

CHARACTERISTICS:

The HD67C52-B2 is a EnOcean / Modbus Slave Converter.

It allows the following characteristics:

- Electrical isolation between Modbus and Power Supply;
- Mountable on 35mm Rail DIN;
- Wide power supply input range: 18...35V DC and 8...24V AC;
- Wide temperature range: -40°C / 85°C [-40°F / +185°F].



CONFIGURATION:

You need Compositor SW67C52 software on your PC in order to perform the following:

- Define the parameter of Modbus line;
- Define the parameter of EnOcean line;
- Update the device.

POWER SUPPLY:

The devices can be powered at 8...24V AC and 12...35V DC. For more details see the two tables below.

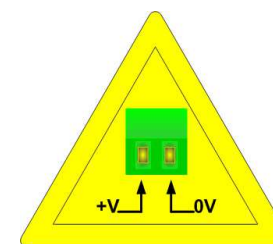
VAC 		VDC 	
Vmin	Vmax	Vmin	Vmax
8V	24V	12V	35V

Consumption at 24V DC:

Device	Consumption [W/VA]
HD67C52-x-B2	3.5



Caution: Not reverse the polarity power



HD67C52-x-B2

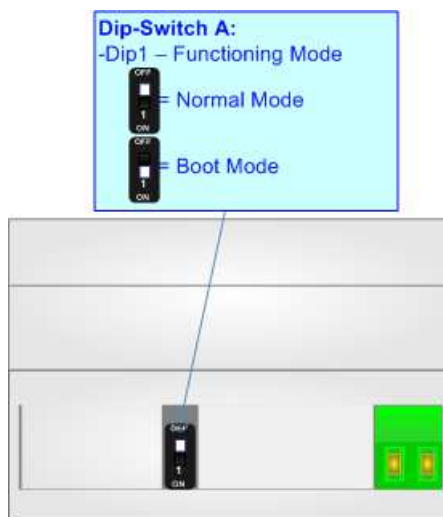
FUNCTION MODES:

The device has got two functions mode depending of the position of the 'Dip1 of Dip-Switch A':

- The first, with 'Dip1 of Dip-Switch A' at "OFF" position, is used for the normal working of the device.
- The second, with 'Dip1 of Dip-Switch A' at "ON" position, is used for upload the Project and/or Firmware.

For the operations to follow for the updating, see 'UPDATE DEVICE' section.

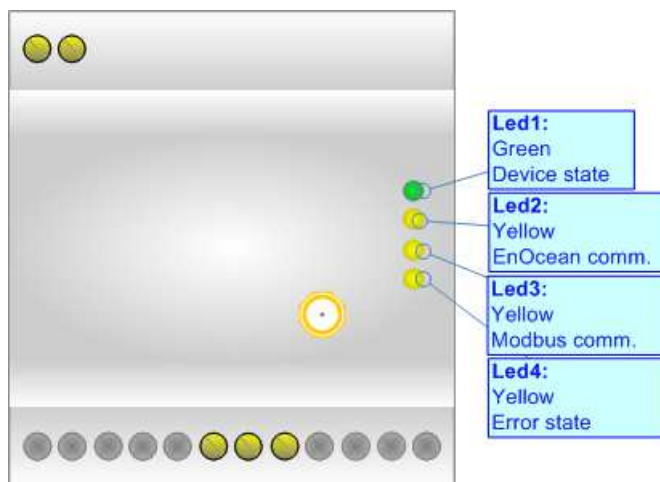
According to the functioning mode, the LEDs will have specifics functions, see 'LEDS' section.



LEDS:

The device has got four LEDs that are used to give information of the functioning status. The various meanings of the LEDs are described in the table below.

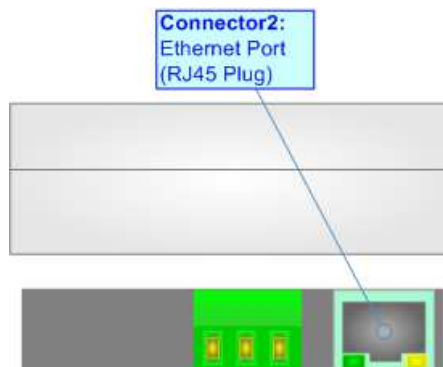
LED	Normal Mode	Boot Mode
1: Device State (green)	Blinks slowly (~1Hz)	Blinks quickly: Boot state Blinks very slowly (~0.5Hz): update in progress
2: EnOcean communication (yellow)	Blinks when EnOcean data is received	Blinks quickly: Boot state Blinks very slowly (~0.5Hz): update in progress
3: Modbus communication (yellow)	Blinks when Modbus communication is running	Blinks quickly: Boot state Blinks very slowly (~0.5Hz): update in progress
4: Error state (yellow)	ON: An error in the communication busses occurs OFF: No errors are present	Blinks quickly: Boot state Blinks very slowly (~0.5Hz): update in progress



ETHERNET:

The Ethernet port is used for programming the device.

The Ethernet connection must be made using Connector2 of HD67C52-x-B2 with at least a Category 5E cable. The maximum length of the cable should not exceed 100m. The cable has to conform to the T568 norms relative to connections in cat.5 up to 100 Mbps. To connect the device to an Hub/Switch is recommended the use of a straight cable, to connect the device to a PC is recommended the use of a cross cable.



ENOCEAN:

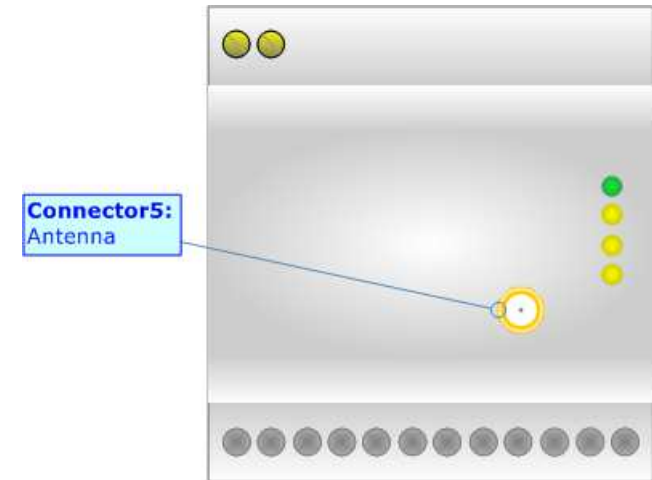
EnOcean is a protocol designed for energy harvesting devices communication. The main fields of application are building automation and domotics, but it can also be potentially used in the industrial field.

EnOcean products include solutions for environment monitoring, smart metering and lighting. Each device uses a unique ID for identification and one of the standardized profiles (EEPs) for data transmission. Communication process may be secure or unsecure and may be unidirectional or bidirectional (for devices that support Smart Acknowledge operating mode).

EnOcean is based on wireless communication on 868.3 MHz ASK.

It is possible to connect up to 100 EnOcean devices to a single converter, where up to 32 can be in Secure Mode and up to 19 with Smart Acknowledge.

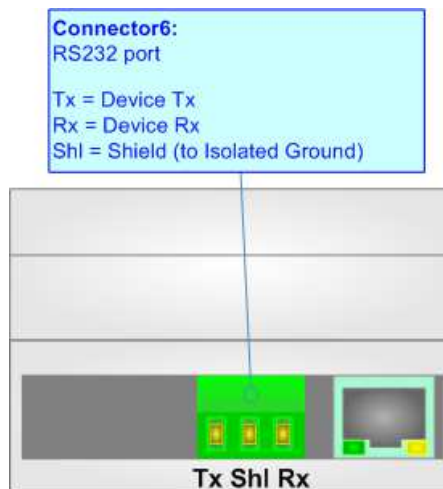
The Antenna connector is a SMA Female ('Female Outer Shell' and 'Female Receptacle') so the Antenna must have a SMA Male connector.



RS232:

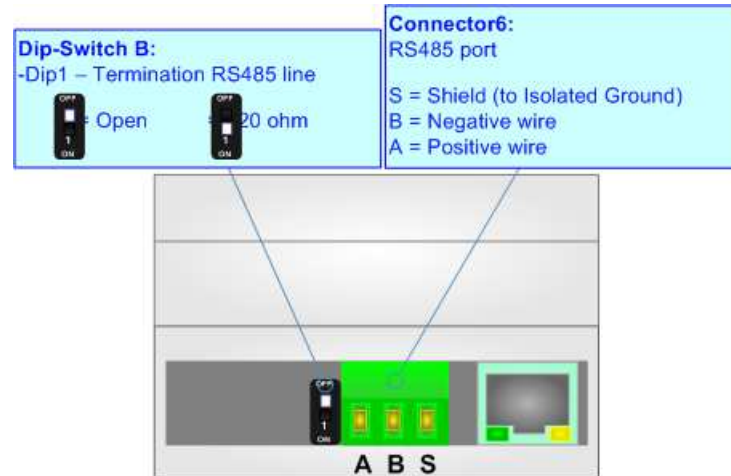
The connection from RS232 socket to a serial port (example one from a personal computer) must be made with a NULL MODEM cable (a serial cable where the pins 2 and 3 are crossed).

It is recommended that the RS232 cable not exceed 15 meters.



RS485:

For terminate the RS485 line with a 120Ω resistor it is necessary to put ON dip 1, like in figure.



The maximum length of the cable should be 1200m (4000 feet).

Here some codes of cables:

- Belden: p/n 8132 - 2x 28AWG stranded twisted pairs conductor + foil shield + braid shield;
- Belden p/n 82842 - 2x 24AWG stranded twisted pairs conductor + foil shield + braid shield;
- Tasker: p/n C521 - 1x 24AWG twisted pair conductor + foil shield + braid shield;
- Tasker: p/n C522 - 2x 24AWG twisted pairs conductor + foil shield + braid shield.

USE OF COMPOSITOR SW67C52:

To configure the Converter, use the available software that runs with Windows called SW67C52. It is downloadable on the site www.adfweb.com and its operation is described in this document. The software works with MS Windows (XP, Vista, Seven, 8, 10; 32/64bit).

When launching the SW67C52, the window below appears (Fig. 2).

**Note:**

It is necessary to have installed .Net Framework 4.

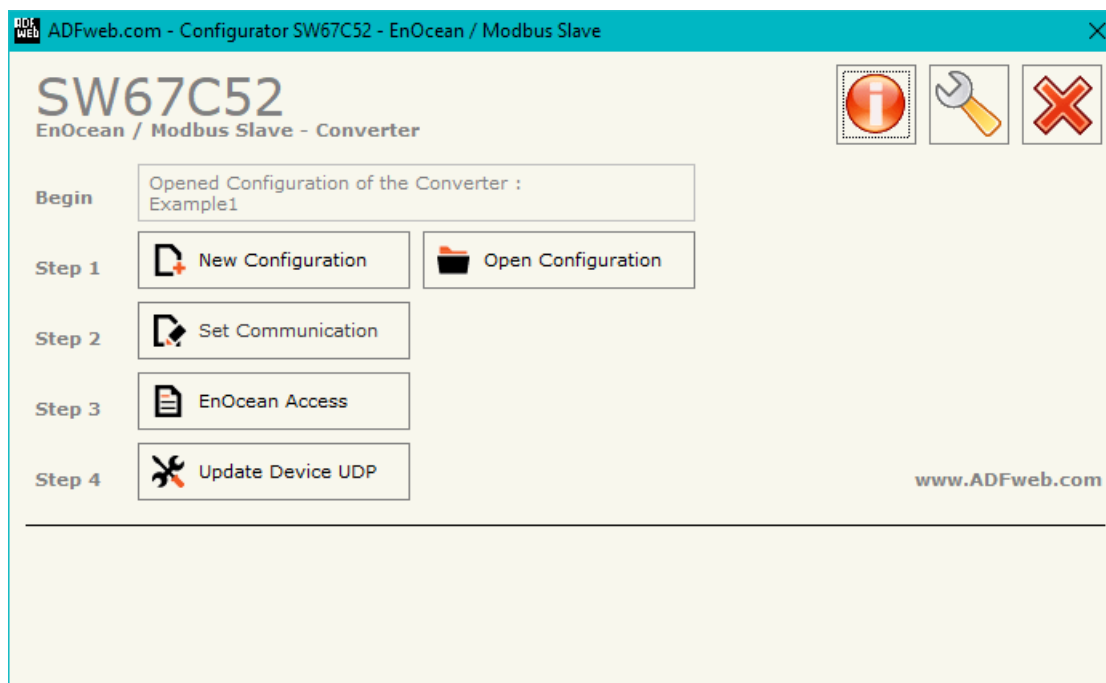
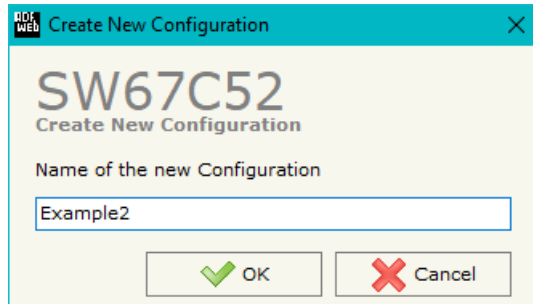


Figure 2: Main window for SW67C52

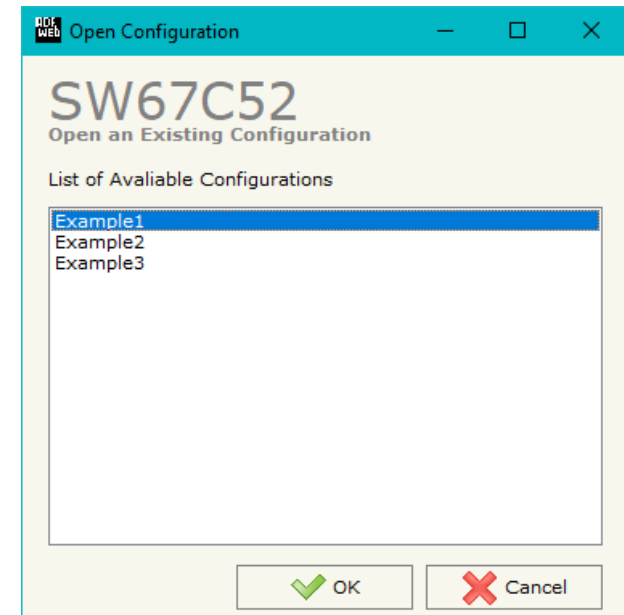
NEW CONFIGURATION / OPEN CONFIGURATION:

The “**New Configuration**” button creates the folder which contains the entire device’s configuration.




A device’s configuration can also be imported or exported:

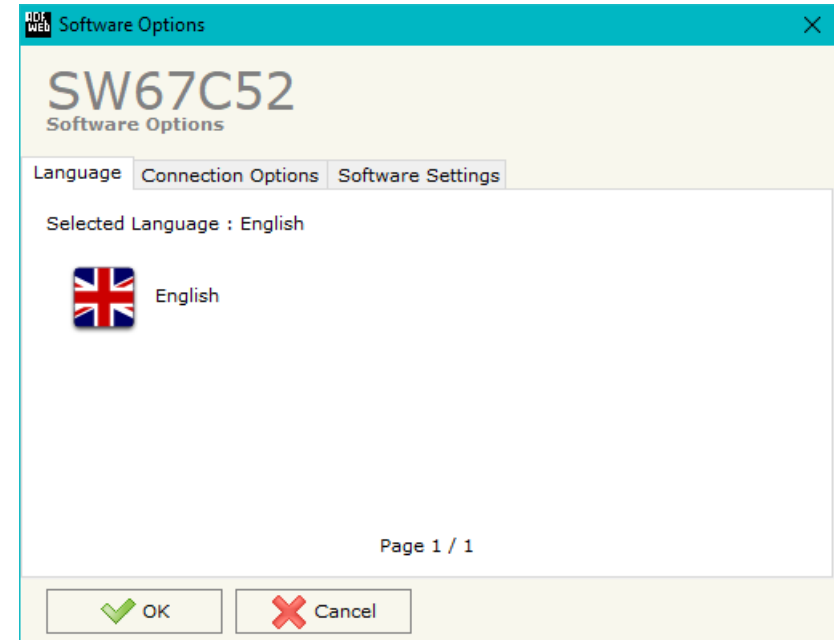
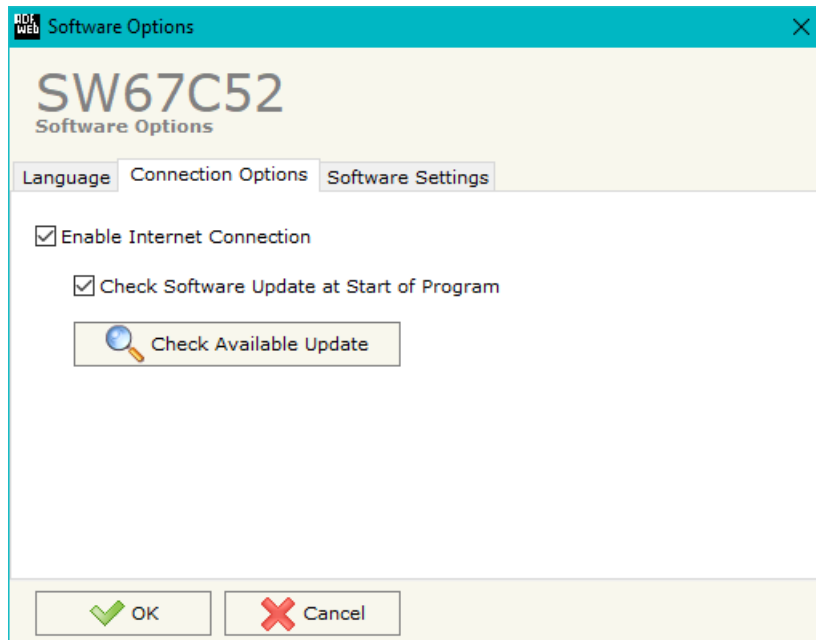
- To clone the configurations of a Programmable “EnOcean / Modbus Slave - Converter” in order to configure another device in the same manner, it is necessary to maintain the folder and all its contents;
- To clone a project in order to obtain a different version of the project, it is sufficient to duplicate the project folder with another name and open the new folder with the button “**Open Configuration**”.



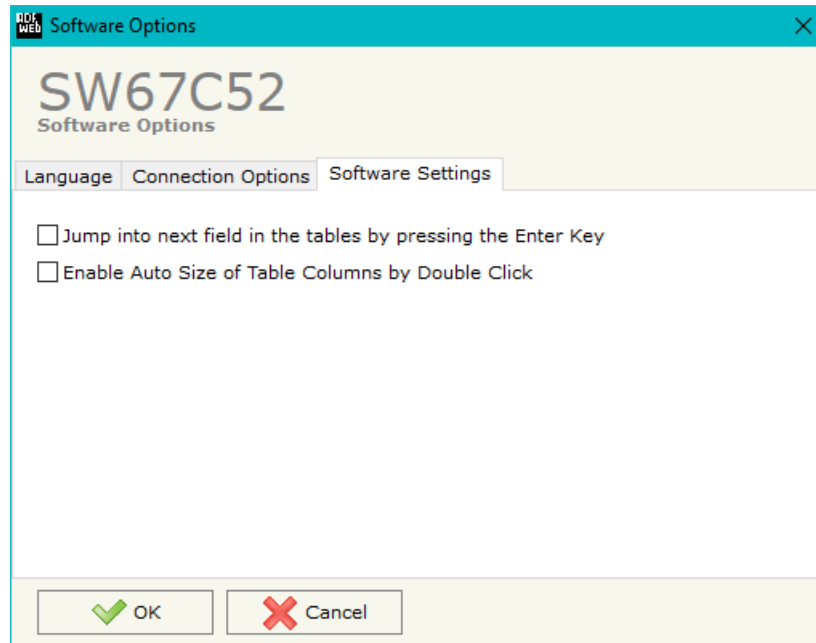
SOFTWARE OPTIONS:

By pressing the “**Settings**” () button there is the possibility to change the language of the software and check the updatings for the compositor.

In the section “Language” it is possible to change the language of the software.



In the section “Connection Options”, it is possible to check if there are some updatings of the software compositor in ADFweb.com website. Checking the option “**Check Software Update at Start of Program**”, the SW67C52 check automatically if there are updatings when it is launched.



In the section "Software Settings", it is possible to enable/disable some keyboard's commands for an easier navigation inside the tables contained in the different sections of the software.

SET COMMUNICATION:

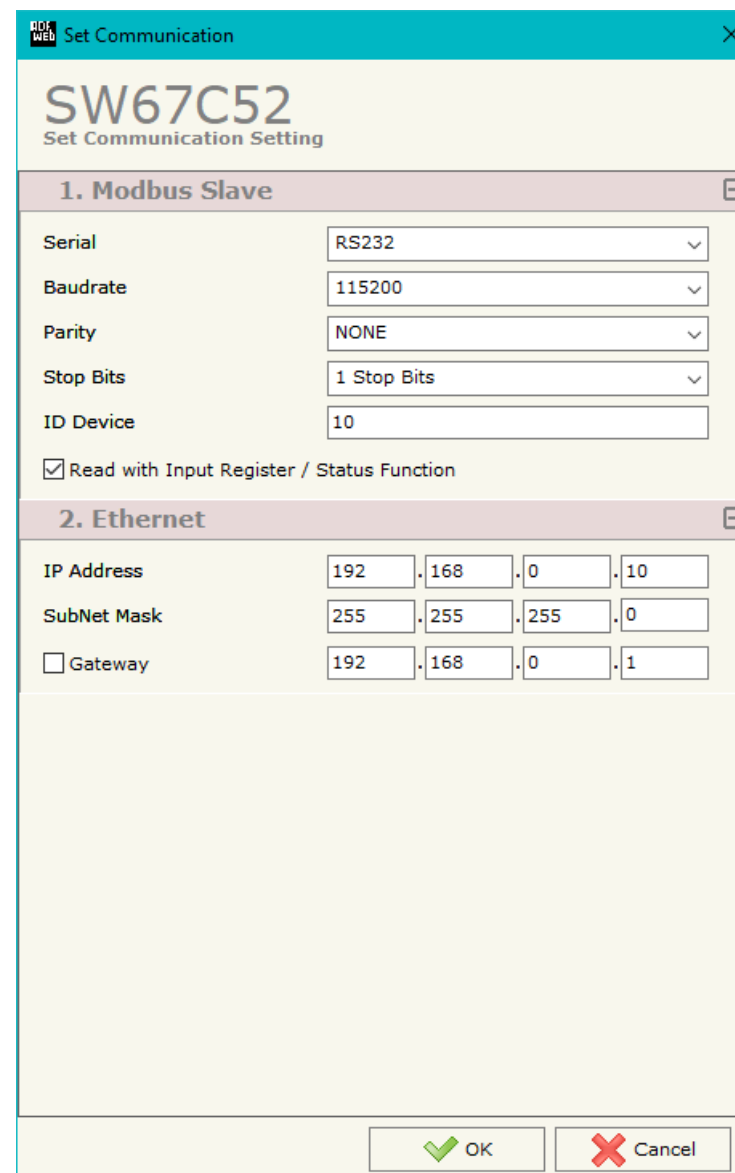
By Pressing the **"Set Communication"** button from the main window for SW67C52 (Fig. 2) the window "Set Communication" appears (Fig. 3).

The means for the fields for the "Modus Slave" are:

- In the field **"Serial"** the serial port to use is defined (RS232 or RS485);
- In the field **"Baudrate"** the baudrate for the serial line is defined;
- In the field **"Parity"** the parity of the serial line is defined;
- In the field **"Stop Bits"** the number of Stop Bits of the serial line is defined;
- In the field **"ID Device"** the ID of Modbus side of the converter is defined;
- If the field **"Read with Input Register / Status Function"** is checked, it is possible to read the Input bytes of EnOcean side with Input Registers (Function 04) and write the Output bytes of EnOcean side with Holding Registers (Function 06/16). The Output bytes are readable with Function 03. Otherwise, only Holding Registers will be used and the Output bytes of EnOcean side cannot be read back.

The means of the fields for "Ethernet" are:

- In the fields **"IP Address"** the IP address for Ethernet side of the converter is defined;
- In the fields **"SubNet Mask"** the SubNet Mask for Ethernet side of the converter is defined;
- In the fields **"Gateway"** the default gateway of the net is defined. This feature can be enabled or disabled pressing the Check Box field. This feature is used for going out of the net;



1. Modbus Slave	
Serial	RS232
Baudrate	115200
Parity	NONE
Stop Bits	1 Stop Bits
ID Device	10
<input checked="" type="checkbox"/> Read with Input Register / Status Function	

2. Ethernet	
IP Address	192 . 168 . 0 . 10
SubNet Mask	255 . 255 . 255 . 0
<input type="checkbox"/> Gateway	192 . 168 . 0 . 1

Figure 3: "Set Communication" window

ENOCEAN ACCESS:

By Pressing the “**EnOcean Set Access**” button from the main window for SW67C52 (Fig. 2) the window “EnOcean Set Access” appears (Fig. 4). This section is used to define the list of the EnOcean devices to read/write.

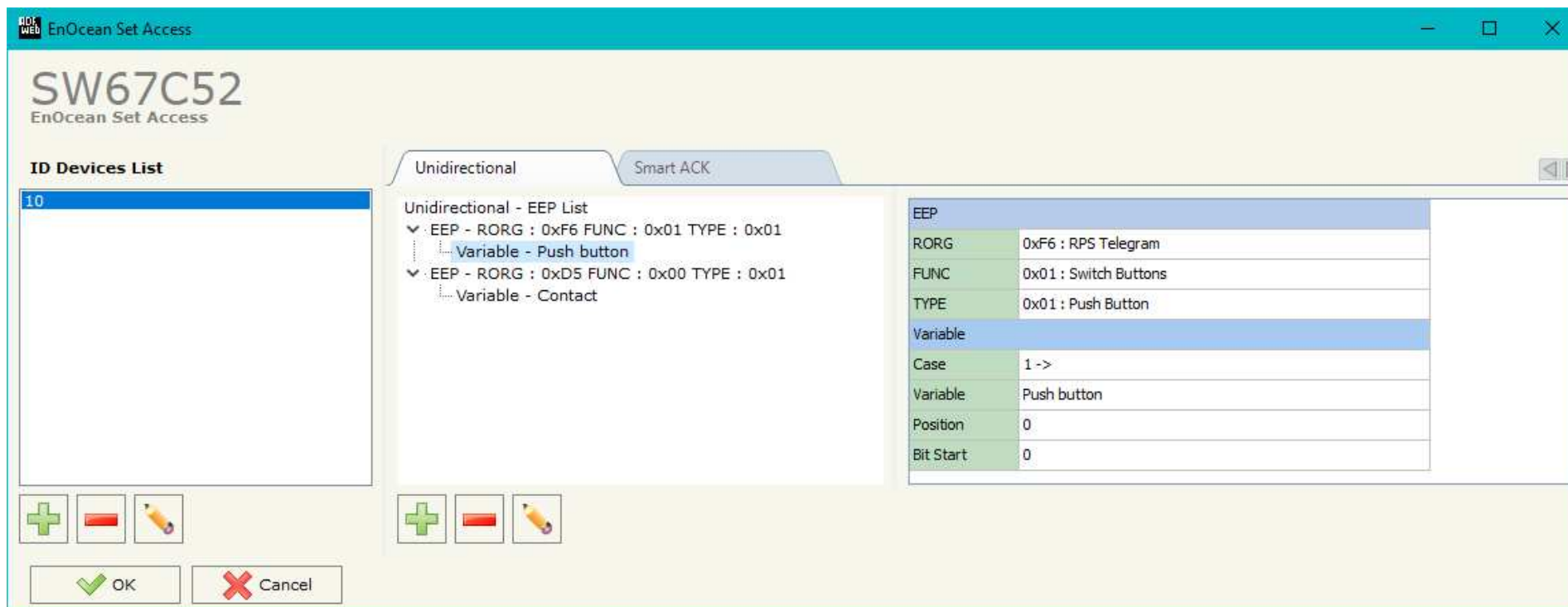
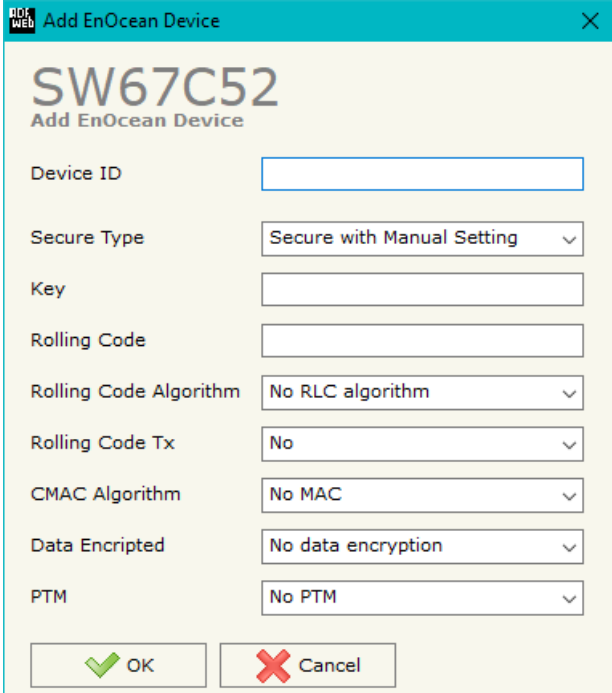


Figure 4: “EnOcean Access” window

By clicking on “+” or “**Modify**” under “ID Devices List”, it is possible to add/modify a new EnOcean device inserting its characteristics. The window “Add/Modify EnOcean device” appears (Fig. 5).

The means of the fields are:

- In the field “**Device ID**” the ID of the EnOcean device is defined;
- In the field “**Secure Type**” the type of EnOcean communication is defined;
- In the field “**Key**” the key used for encryption of frames in Secure Mode is defined;
- In the field “**Rolling Code**” the Rolling Code for the EnOcean communication is defined;
- In the field “**Rolling Code Algorithm**” the type of Rolling Code is defined;
- In the field “**Rolling Code Tx**” the transmission of the Rolling Code is enabled/disabled;
- In the field “**CMAC Algorithm**” the MAC field at the end of the EnOcean frame is defined;
- In the field “**Data Encrypted**” the encryption of the data is enabled/disabled;
- In the field “**PTM**” the type of EnOcean device is defined.



The screenshot shows a web-based configuration window titled "Add EnOcean Device" for a device with ID "SW67C52". The window contains the following fields and options:

Field Name	Value / Option
Device ID	[Empty text input field]
Secure Type	Secure with Manual Setting (dropdown)
Key	[Empty text input field]
Rolling Code	[Empty text input field]
Rolling Code Algorithm	No RLC algorithm (dropdown)
Rolling Code Tx	No (dropdown)
CMAC Algorithm	No MAC (dropdown)
Data Encrypted	No data encryption (dropdown)
PTM	No PTM (dropdown)

At the bottom of the window, there are two buttons: "OK" (with a green checkmark icon) and "Cancel" (with a red X icon).

Figure 5: "Add/Modify EnOcean device" window

By clicking on "+" or **Modify**, it is possible to add/modify a new variable for the selected ID. The window "Add/Modify EnOcean variable" appears (Fig. 6).

The means of the EEP fields are:

- In the field "**Rorg**" the type of EnOcean telegram is defined;
- In the field "**Func**" the type of EnOcean instance is defined;
- In the field "**Type**" the type of event is defined.

The means of the Variable fields are:

- In the field "**Case**" the format of the EnOcean telegram is defined;
- In the field "**Variable**" the variable to read/write is defined;
- In the field "**Position**" the starting byte of the internal array where mapping/taking the variable is defined;
- In the field "**Bit Start**" the starting bit of the defined Position where mapping/taking the variable is defined.

The screenshot shows a web-based interface for adding or modifying an EnOcean variable. The window title is "Add EnOcean Variable" and it is for device "SW67C52". The interface is organized into two main sections: "EEP" and "Variable".

EEP Section:

- Rorg:** A dropdown menu showing "0xF6 : RPS Telegram".
- Func:** A dropdown menu showing "0x01 : Switch Buttons".
- Type:** A dropdown menu showing "0x01 : Push Button".

Variable Section:

- Case:** A dropdown menu showing "1 ->".
- Variable:** A dropdown menu showing "Push button : 3, 1".
- Position:** A text input field containing "0".
- Bit Start:** A dropdown menu showing "0".

At the bottom of the window, there are two buttons: "OK" (with a green checkmark icon) and "Cancel" (with a red X icon).

Figure 6: "Add/Modify EnOcean variable" window

UPDATE DEVICE:

By pressing the **“Update Device”** button, it is possible to load the created Configuration into the device; and also the Firmware, if necessary. This by using the Ethernet port.

If you don't know the actual IP address of the device you have to use this procedure:

- Turn OFF the Device;
- Put Dip1 of 'Dip-Switch A' in ON position;
- Turn ON the device
- Connect the Ethernet cable;
- Insert the IP **“192.168.2.205”**;
- Select which operations you want to do;
- Press the **“Execute update firmware”** button to start the upload;
- When all the operations are “OK” turn OFF the Device;
- Put Dip1 of 'Dip-Switch A' in OFF position;
- Turn ON the device.

If you know the actual IP address of the device, you have to use this procedure:

- Turn ON the Device with the Ethernet cable inserted;
- Insert the actual IP of the Converter;
- Select which operations you want to do;
- Press the **“Execute update firmware”** button to start the upload;
- When all the operations are “OK” the device automatically goes at Normal Mode.

At this point the configuration/firmware on the device is correctly updated.

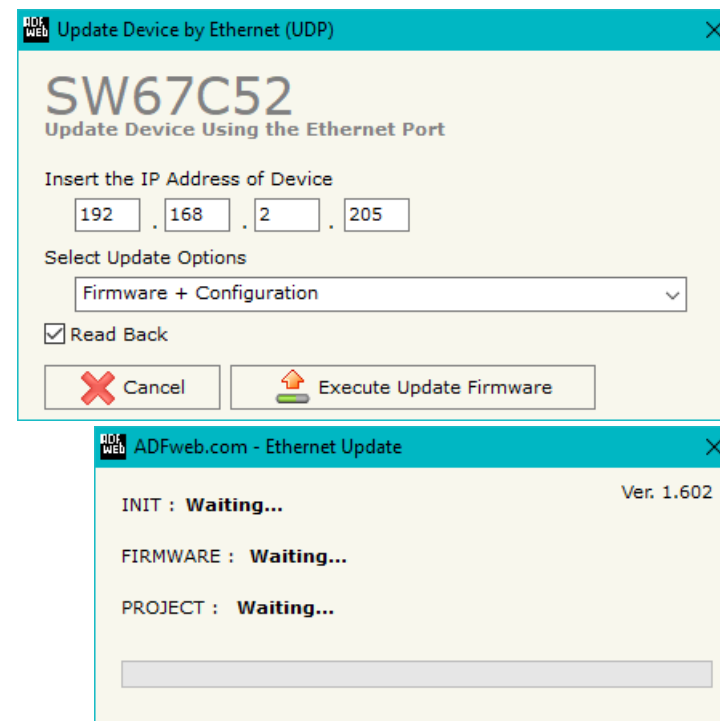


Figure 7: "Update device" windows

**Note:**

When you receive the device, for the first time, you also have to update the Firmware in the HD67C52 device.

**Warning:**

If Fig. 8 appears when you try to do the Update try these points before seeking assistance:

- Try to repeat the operations for the updating;
- Try with another PC;
- Try to restart the PC;
- Check the LAN settings;
- If you are using the program inside a Virtual Machine, try to use in the main Operating System;
- If you are using Windows Seven, Vista, 8 or 10 make sure that you have the administrator privileges;
- In case you have to program more than one device, using the "UDP Update", you have to cancel the ARP table every time you connect a new device on Ethernet. For do this you have to launch the "Command Prompt" and write the command "arp -d". Pay attention that with Windows Vista, Seven, 8, 10 you have to launch the "Command Prompt" with Administrator Rights;
- Pay attention at Firewall lock.

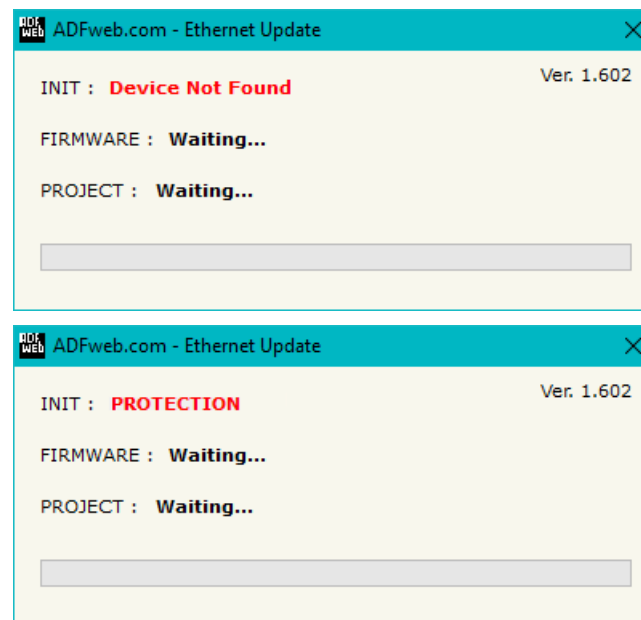


Figure 8: "Error" window

**Warning:**

In the case of HD67C52 you have to use the software "SW67C52": www.adfweb.com/download/filefold/SW67C52.zip.

MODBUS MAP:

On Modbus side, the map is created automatically. In relation to the configuration defined, it is possible to have two different maps.

Read with Input Register / Status Function not enabled

Data in reading:

Type	Address	Function	Description
Holding Register	0	03	Input Bytes 0-1 of internal array
Holding Register	1	03	Input Bytes 2-3 of internal array
Holding Register	2	03	Input Bytes 4-5 of internal array

.
.

.

Data in writing:

Type	Address	Function	Description
Holding Register	0	06/16	Output Bytes 0-1 of internal array
Holding Register	1	06/16	Output Bytes 2-3 of internal array
Holding Register	2	06/16	Output Bytes 4-5 of internal array

.
.

.



Note:

The data can be read/written as single bits too using Coil Status (Function 01 and Functions 05/15).

Read with Input Register / Status Function enabled

Data in reading:

Type	Address	Function	Description
Input Register	0	04	Input Bytes 0-1 of internal array
Input Register	1	04	Input Bytes 2-3 of internal array
Input Register	2	04	Input Bytes 4-5 of internal array

.
.

.

Data in writing:

Type	Address	Function	Description
Holding Register	0	R: 03 W: 06/16	Output Bytes 0-1 of internal array
Holding Register	1	R: 03 W: 06/16	Output Bytes 2-3 of internal array
Holding Register	2	R: 03 W: 06/16	Output Bytes 4-5 of internal array

.
.

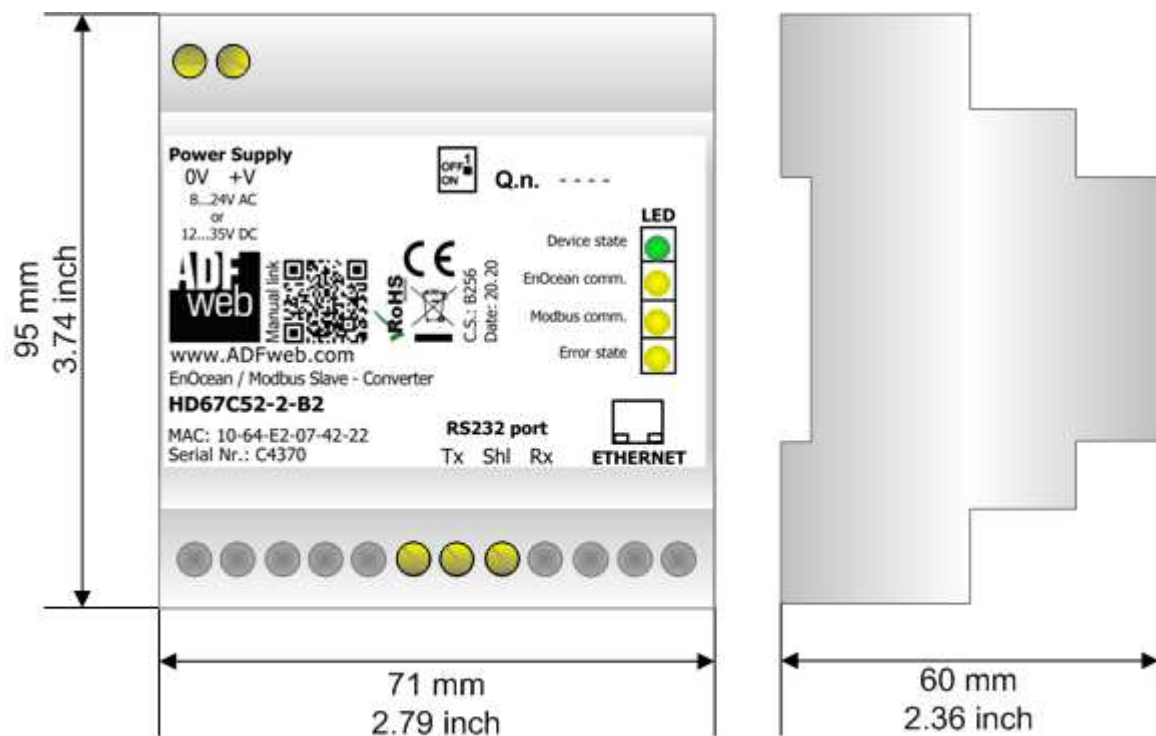
.



Note:

The data can be read/written as single bits too using Input/Coil Status (Function 02 and Functions 01/05/15).

MECHANICAL DIMENSIONS:



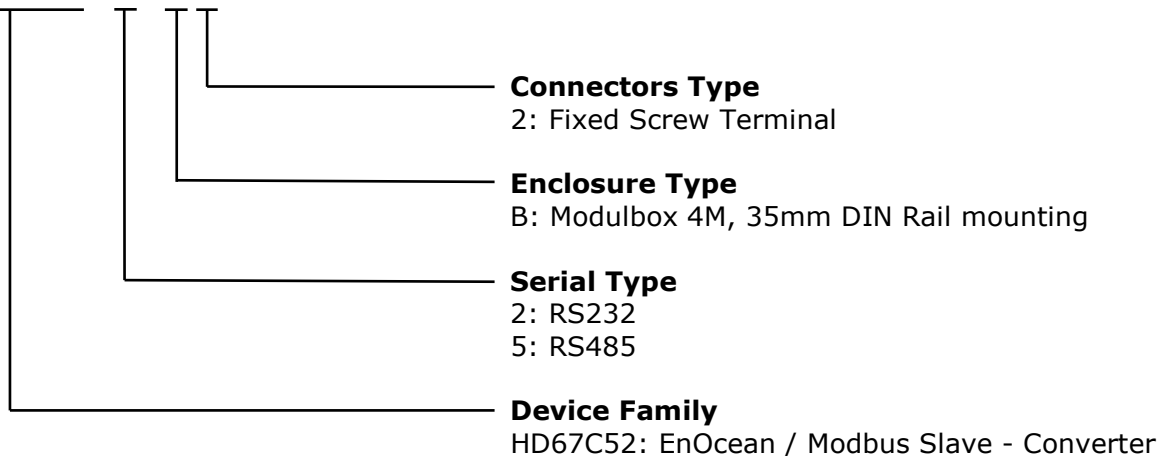
Housing: PVC
 Weight: 200g (Approx)

Figure 9: Mechanical dimensions scheme for HD67C52-x-B2

ORDERING INFORMATIONS:

The ordering part number is formed by a valid combination of the following:

HD67C52 - x - B 2



- Order Code: **HD67C52-2-B2** - EnOcean / Modbus Slave – Converter (Modbus port: RS232)
- Order Code: **HD67C52-5-B2** - EnOcean / Modbus Slave – Converter (Modbus port: RS485)

ACCESSORIES:

- Order Code: **AC34011** - 35mm Rail DIN - Power Supply 220/240V AC 50/60Hz – 12 V DC
- Order Code: **AC34012** - 35mm Rail DIN - Power Supply 220/240V AC 50/60Hz – 24 V DC

DISCLAIMER:

All technical content within this document can be modified without notice. The content of the document is a under continual renewal. For losses due to fire, earthquake, third party access or other accidents, or intentional or accidental abuse, misuse, or use under abnormal conditions repairs are charged to the user. ADFweb.com S.r.l. will not be liable for accidental loss of use or inability to use this product, such as loss of business income. ADFweb.com S.r.l. shall not be liable for consequences of improper use.

OTHER REGULATIONS AND STANDARDS:**WEEE INFORMATION**

Disposal of old electrical and electronic equipment (as in the European Union and other European countries with separate collection systems).

— This symbol on the product or on its packaging indicates that this product may not be treated as household rubbish. Instead, it should be taken to an applicable collection point for the recycling of electrical and electronic equipment. If the product is disposed correctly, you will help prevent potential negative environmental factors and impact of human health, which could otherwise be caused by inappropriate disposal. The recycling of materials will help to conserve natural resources. For more information about recycling this product, please contact your local city office, your household waste disposal service or the shop where you purchased the product.

RESTRICTION OF HAZARDOUS SUBSTANCES DIRECTIVE

The device respects the 2002/95/EC Directive on the restriction of the use of certain hazardous substances in electrical and electronic equipment (commonly referred to as Restriction of Hazardous Substances Directive or RoHS).

CE MARKING

The product conforms with the essential requirements of the applicable EC directives.

WARRANTIES AND TECHNICAL SUPPORT:

For fast and easy technical support for your ADFweb.com SRL products, consult our internet support at www.adfweb.com.
Otherwise contact us at the address support@adfweb.com

RETURN POLICY:

If while using your product you have any problem and you wish to exchange or repair it, please do the following:

- Obtain a Product Return Number (PRN) from our internet support at www.adfweb.com. Together with the request, you need to provide detailed information about the problem.
- Send the product to the address provided with the PRN, having prepaid the shipping costs (shipment costs billed to us will not be accepted).

If the product is within the warranty of twelve months, it will be repaired or exchanged and returned within three weeks. If the product is no longer under warranty, you will receive a repair estimate.



ADFweb.com S.r.l.
Via Strada Nuova, 17
IT-31010 Mareno di Piave
TREVISO (Italy)
Phone +39.0438.30.91.31
Fax +39.0438.49.20.99
www.adfweb.com

