

# User Manual

Revision 1.104  
English

## J1939 / Modbus Slave - Converter

(Order Code: HD67212)

### Benefits and Main Features:

- ▶ Very easy to configure
- ▶ Low cost
- ▶ Modbus RTU on Serial RS232/485
- ▶ RS232/485 selection
- ▶ Galvanic isolation
- ▶ Industrial temperature range:  
-40°C / 85°C (-40°F / 185°F)



HD67212

Similar Products  
→

←  
Benefit

**INDEX:**

	Page
INDEX	2
UPDATED DOCUMENTATION	2
REVISION LIST	2
WARNING	2
TRADEMARKS	2
SECURITY ALERT	3
CONNECTION SCHEME	4
CHARACTERISTICS	5
POWER SUPPLY	5
CONFIGURATION	6
USE OF COMPOSITOR SW67212	6
NEW PROJECT / OPEN PROJECT	7
SET COMMUNICATION	8
RECIVE J1939	9
DEFINE RECEIVE J1939	10
TRANSMIT J1939	11
DEFINE TANSMIT J1939	12
REMOTE REQUEST	13
UPDATE DEVICE	14
CHARACTERISTICS OF THE CABLES	15
MECHANICAL DIMENSIONS	15
ORDER CODE	16
ACCESSORIES	16
DISCLAIMER	17
OTHER REGULATIONS AND STANDARDS	17
WARRANTIES AND TECHNICAL SUPPORT	18
RETURN POLICY	18
PRODUCTS AND RELATED DOCUMENTS	18

**UPDATED DOCUMENTATION:**

Dear customer, we thank you for your attention and we remind you that you need to check that the following document is:

- Updated
- Related to the product you own

To obtain the most recently updated document, note the “document code” that appears at the top right-hand corner of each page of this document.

With this “Document Code” go to web page [www.adfweb.com/download/](http://www.adfweb.com/download/) and search for the corresponding code on the page. Click on the proper “Document Code” and download the updates.

To obtain the updated documentation for the product that you own, note the “Document Code” (Abbreviated written "Doc. Code" on the label on the product) and download the updated from our web site [www.adfweb.com/download/](http://www.adfweb.com/download/)

**REVISION LIST:**

Revision	Date	Author	Chapter	Description
1.102	13/03/2009	Fl	All	Added new features
1.103	11/05/2010	Dp	All	Revision
1.104	13/02/2013	Nt	All	Added new chapters

**WARNING:**

ADFweb.com reserves the right to change information in this manual about our product without warning.

ADFweb.com is not responsible for any error this manual may contain.

**TRADEMARKS:**

All trademarks mentioned in this document belong to their respective owners.

**SECURITY ALERT:****GENERAL INFORMATION**

To ensure safe operation, the device must be operated according to the instructions in the manual. When using the device are required for each individual application, legal and safety regulation. The same applies also when using accessories.

**INTENDED USE**

Machines and systems must be designed so the faulty conditions do not lead to a dangerous situation for the operator (i.e. independent limit switches, mechanical interlocks, etc.).


**QUALIFIED PERSONNEL**

The device can be used only by qualified personnel, strictly in accordance with the specifications.

Qualified personnel are persons who are familiar with the installation, assembly, commissioning and operation of this equipment and who have appropriate qualifications for their job.

**RESIDUAL RISKS**

The device is state of the art and is safe. The instrument can represent a potential hazard if they are inappropriately installed and operated by personnel untrained. These instructions refer to residual risks with the following symbol:

 This symbol indicates that non-observance of the safety instructions is danger for people to serious injury or death and / or the possibility of damage.

**CE CONFORMITY**

The declaration is made by us. You can send an email to or give us a call if you need it.

**CONNECTION SCHEME:**

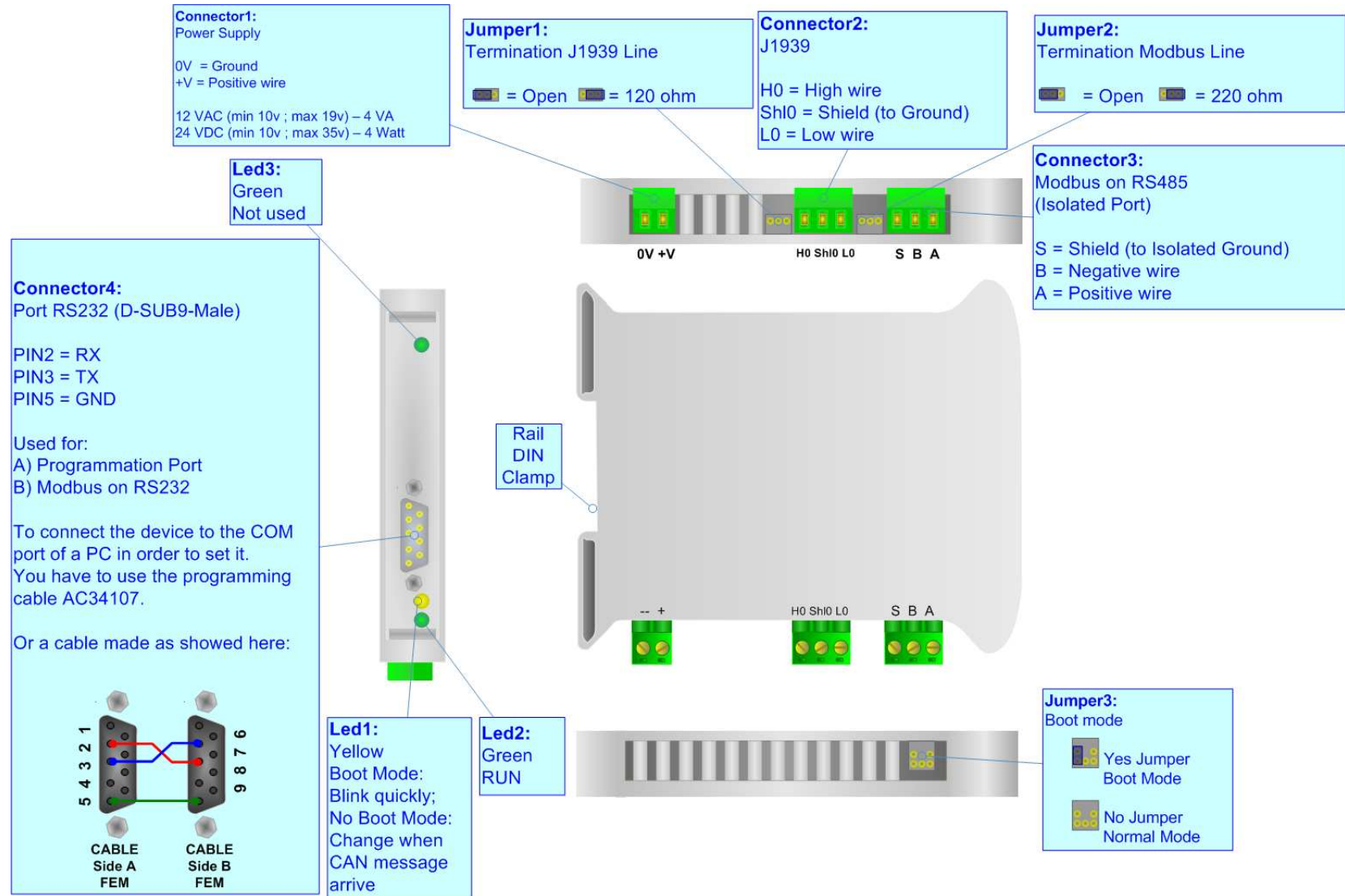


Figure 1: Connection scheme for HD67212

**CHARACTERISTICS:**

The configurable J1939 into Modbus Slave gateway allow the following:

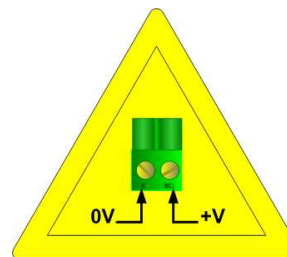
- Baud rate changeable with software;
- Mountable on Rail DIN;
- Temperature range from -40°C to 85°C.

**POWER SUPPLY:**

Recommended Power Supply	
VDC	VAC
24v	12v

VDC		VAC	
Vmin	Vmax	Vmin	Vmax
10v	35v	10v	19v

**Caution: Not reverse the polarity power .**



HD67212

## CONFIGURATION:

The "Gateway J1939 to Modbus", allows a J1939 network to communicate with a Modbus network.

You need Compositor SW67212 software on your PC in order to perform the following:

- Define that the J1939 frame of the J1939 are reading from Modbus;
- Define that the J1939 frame of the J1939 are writing from Modbus.

## USE OF COMPOSITOR SW67212:

To configure the Gateway, use the available software that runs with Windows, called SW67212. It is downloadable on the site [www.adfweb.com](http://www.adfweb.com) and its operation is described in this document.

When launching the SW67212 the right window appears (Fig. 2).

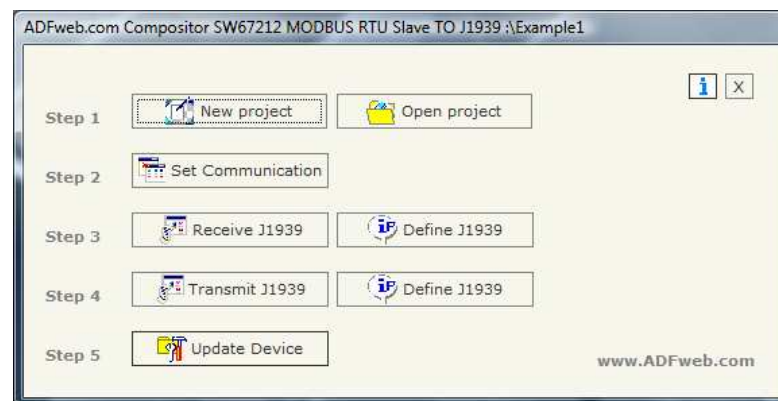


Figure 3: Main window for SW67212

**NEW PROJECT / OPEN PROJECT:**

The “New Project” button creates the folder which contains the entire device configuration. A device configuration can also be imported and exported:

- To clone the configurations of a Programmable J1939 to Modbus Gateway in order to configure another device in the same manner, it is necessary to maintain the folder and all its contents;
- To clone a project in order to obtain a different version of the project, it is sufficient to duplicate the project folder with another name and open the new folder with the button “Open Project”;

When a new project is created or an existent project is open, it will be possible to access the various configuration section of the software:

- **Set Communication;**
- **Receive J1939;**
- **Transmit J1939.**

**GENERAL PARAMETER:**

This section defines the fundamental communication parameters of two Buses, J1939 and Modbus.

By pressing the "Set communication" button from the main window for SW67212 (Fig. 3) the window "Set Communication" appears (Fig. 4):

- In the fields "Baud Rate" the velocity of the two buses are defined;
- In the field "TimeOut Data" insert a time, when this time is elapsed the data isn't reliable, and in the Modbus register you can read "FFFF";
- The field "Modbus register" insert a number of register, in this register you can visualize if the data is reliable, if 1 the data is ok, if 0 the data is oldest of the time inserted in the time out data;
- If the field "Peer to Peer" is checked the gateway accept any ID that have the PGN inserted in the section "Receive J1939";
- If the field "Enable write J1939 on request" is checked, the field "Write J1939 frame" in "Transmit J1939 frame info" is enabled. If this field is not checked, the device send a J1939 frame for every written register. Otherwise it is possible to select when to send the J1939 frame;
- If the field "Enable Remote Request" is checked it is possible to use the "Remote Request". To use this, is necessary to insert in the four fields under the four Modbus Registers.
- In the field "parity", the serial parity is defined;
- The Gateway has two alternative outlets from the Modbus side: RS485 or RS232. Select the desired choice;
- In the field "Dev ID" the Modbus address is defined.



Figure 4: "Set Communication" window



**RECEIVE J1939:**

By pressing the "Receive J1939" button from the main window for SW67212 (Fig. 3) the window "Receive J1939 frame" appears (Fig. 5):

In the right scenario:

- In the field "PGN" insert the PGN of the data you would to read from Modbus. (in the J1939 protocol the PGN is an identifier);
- In the field "ID Device", insert the ID of J1939 device that transmit the frame;
- If the field "Delete" is checked and the Modbus Register in the section "Set communication" is 0 the gateway when the data is oldest of the time inserted in the "time out data" you visualize "FFFF" in the Modbus registers of this PGN.

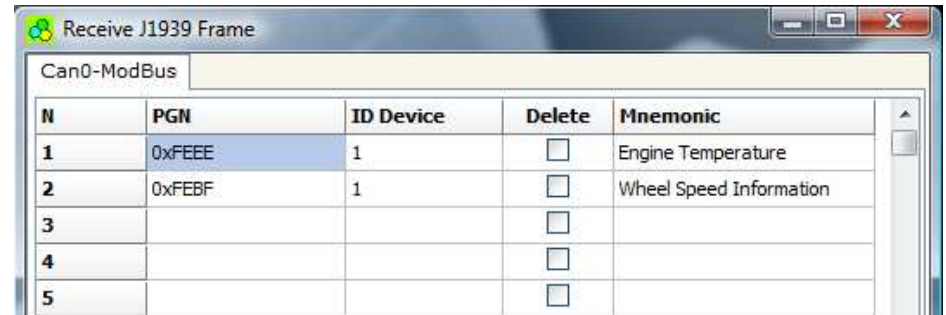


Figure 5: "Receive J1939 frame" window

### DEFINE RECEIVE J1939

By pressing the "Define J1939" button from the main window for SW67212 (Fig. 3) the window "Receive J1939 frame info" appears (Fig. 6):

- In the field "PGN" there are PGN who you insert in the list;
- In the field "MODBUS" there are the modbus words;
- In the field "Index MODBUS" there is the address who contain the Modbus word;
- In the field "Selecet Frame Byte" you select the position of the byte.

For example:

Click on the PGN, insert the valid address in the field Index MODBUS, select the byte position(B1 in high MODBUS byte and B2 in low MODBUS byte), click the "New" button, in the field MODBUS appears the names of modbus words (The fist word is name IND MB 0, second IND MB 1, third Ind MB 2 and so on).

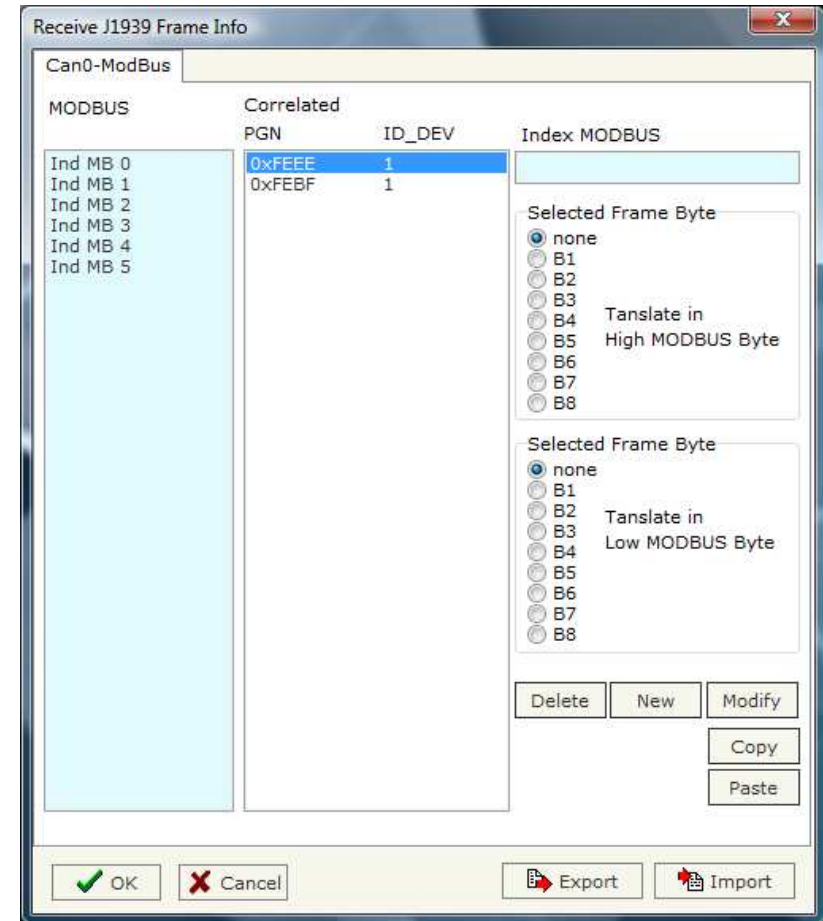


Figure 6: "Receive J1939 frame info" window

### TRANSMIT J1939

By pressing the "Trnsmit J1939" button from the main window of SW67212 the window "Transmit J1939 frame" appears (Fig. 7):

In the right scenario:

- In the field "Priority" insert the priority of the frame, in J1939 protocol is a number among 0,1,2,3,4,5,6,7. The number 0 is the highest priority and 7 is the lowest;
- In the field "Data Page" insert the data page, in the J1939 protocol is 0 or 1;
- In the field "PGN" insert the PGN of the data you would to write from modbus to J1939. (in the J1939 protocol the PGN is an identifier);
- In the field "ID device" you insert the ID of device that send the frame.

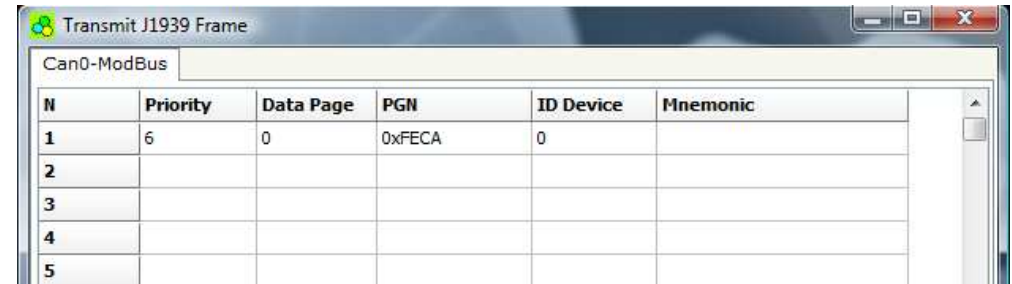


Figure 7: "Transmit J1939 frame" window

### DEFINE TRNASMIT J1939

By pressing the "Define J1939" button from the main window for SW67212 (Fig. 3) the window "Transmit J1939 Frame Info" appears (Fig. 8):

- In the field "PGN" there are PGN who you insert in the list of transmit J1939;
- In the field "MODBUS" there are the modbus words.
- In the field "Index MODBUS" there is the address who contain the Modbus word;
- In the field "Selecet Frame Byte" you select the position of the byte;
- With the field "Write J1939 Frame" it is possible to decide when to send the J1939 frame. If a modbus register has setted "True" in this field and it is written the frame j1939 will be sent, otherwise if is setted to False the J1939 frame will not be sent. It is possible to have this function only if the field "Enable write J1939 on request" in the "Set Communication" window is checked.

For example:

Click on the PGN, insert the valid address in the field Index MODBUS, select the byte position(B1 in high MODBUS byte and B2 in low MODBUS byte), click the "New" button, in the field MODBUS appears the names of modbus words (The fist word is name IND MB 0, second IND MB 1, third Ind MB 2 and so on).

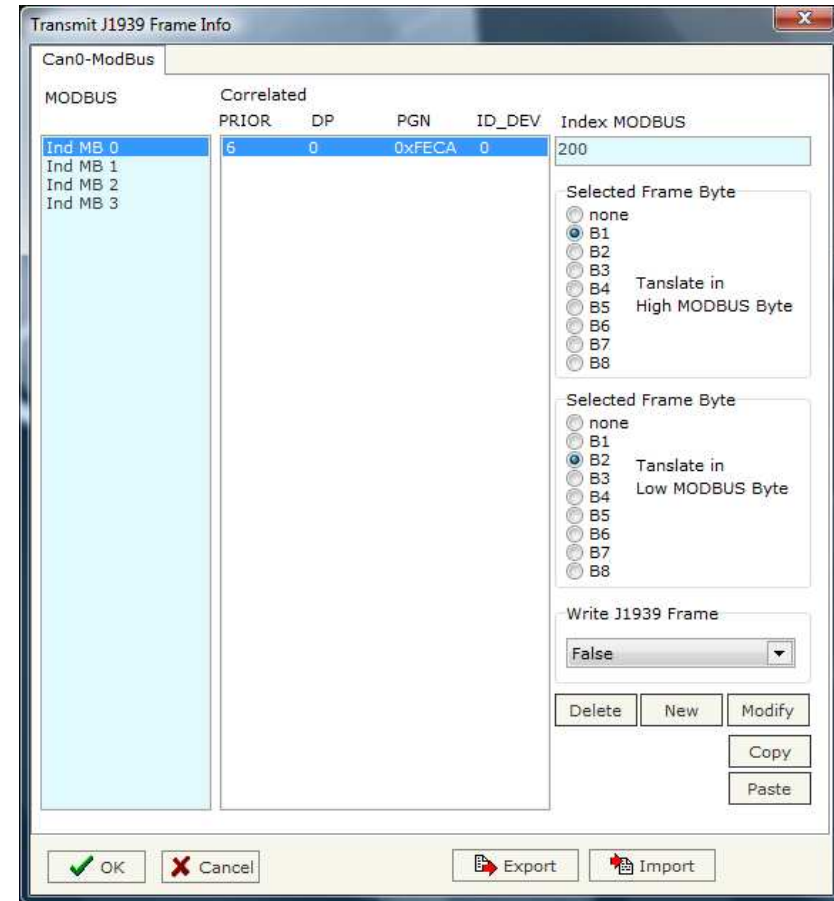


Figure 8: "Transmit J1939 frame info" window

## REMOTE REQUEST

In the "Priority and Destination" Register you have to indicate the Priority of the request in the high byte of the register (usually this value is equal to 6) and the Address of the Destination Device in the low byte of register.

In the "PGN Part 1" you have to indicate the first two byte of the PGN while in the "PGN Part 2" Register you have to indicate, in the high byte of register, the third byte of the PGN.

In the "Source Address" Register you have to indicate the Source Address of the request in the high part of the register.

Only when you write the "Souce Address" register the request will be send to the J1939 network.

For example if you want to request the PGN 0x00FEE5 at device with address 5 you have to write:

1st reg = 0x0605

2nd reg = 0xE5FE

3rd reg = 0x0000

4th reg = 0x0100

### UPDATE DEVICE:

Section "UP date Device".

In order to load the parameters or update the firmware in the gateway, follow these instructions:

- Turn off the device;
- Connect the Null Modem Cable from your PC to the Gateway;
- Insert the Boot Jumper (See the Fig. 1 for more info);
- Turn on the Device;
- Check the Boot Led. It must blink quickly (See the Fig. 1 for more info)
- Select COM port and press "Execute update firmware" to start the upload;
- When all the operation are "OK" turn off the Device;
- Disconnect the Boot Jumper;
- Disconnect the RS232 cable;
- Turn on the device.

At this point the configuration/firmware on the Device is correctly updated.

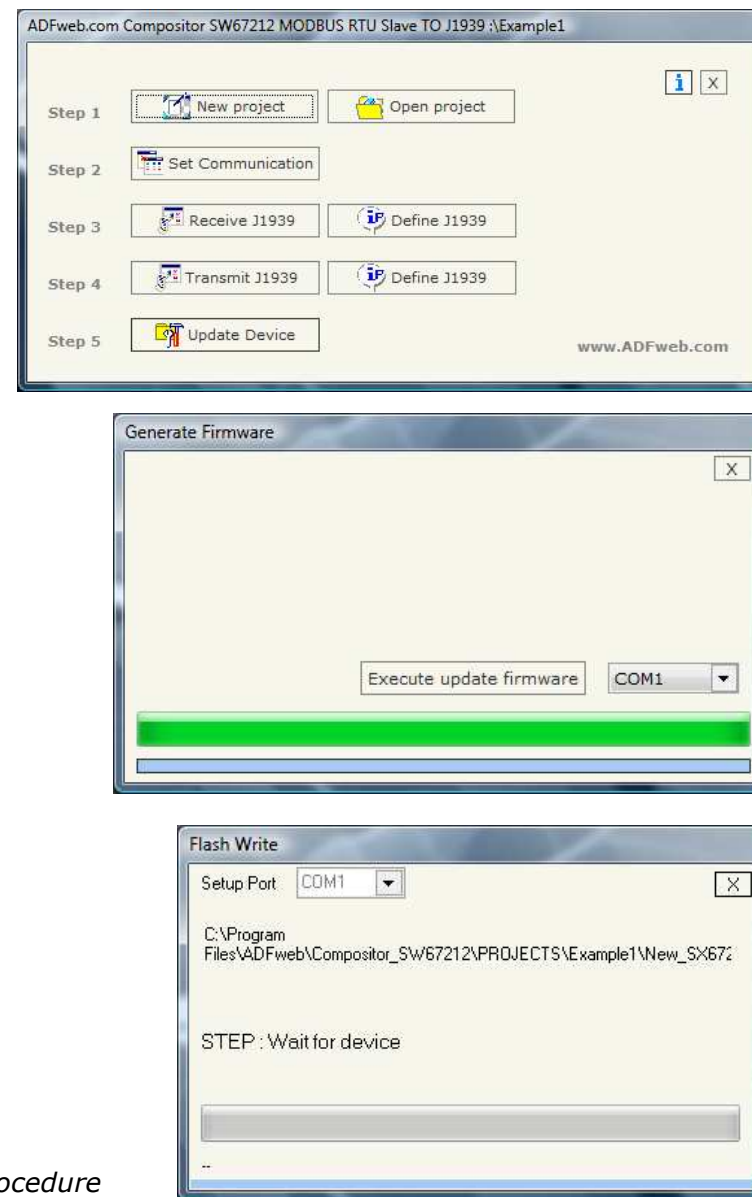


Figure 9: Update device procedure

**CHARACTERISTICS OF THE CABLES:**

The connection from RS232 socket to a serial port (example one from a personal computer), must be made with a Null Modem cable (a serial cable where the pins 2 and 3 are crossed).

It is recommended that the RS232C Cable not exceed 15 meters.

**MECHANICAL DIMENSIONS:**

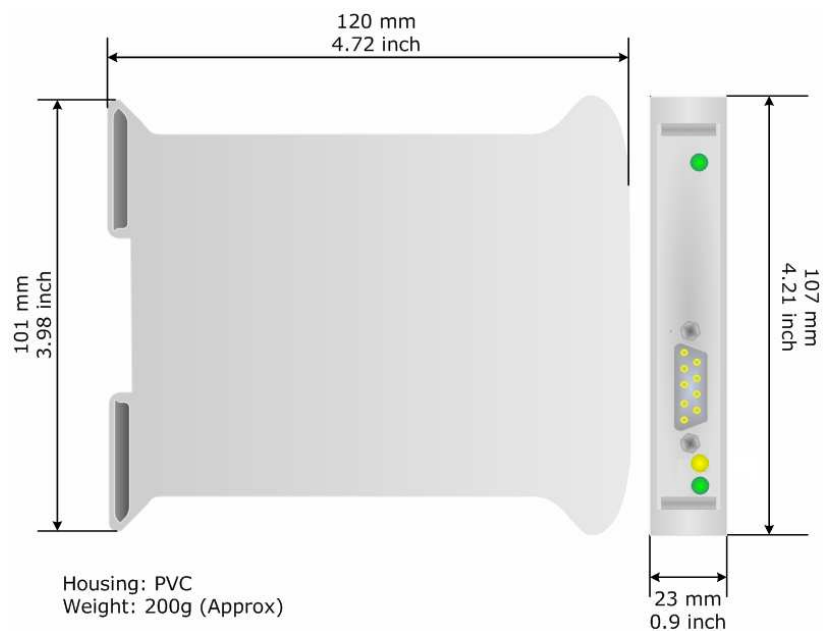


Figure 10: Mechanical dimensions scheme for HD67212

**ORDER CODES:**

Order Code: **HD67212** - J1939 / Modbus Slave - Converter

**ACCESSORIES:**

Order Code: **AC34107** - Null Modem Cable Fem/Fem DSub 9 Pin 1,5 m

Order Code: **AC34114** - Null Modem Cable Fem/Fem DSub 9 Pin 5 m

Order Code: **AC34001** - Rail DIN - Power Supply 220/240V AC 50/60Hz - 12 V AC

Order Code: **AC34002** - Rail DIN - Power Supply 110V AC 50/60Hz - 12 V AC



## DISCLAIMER

All technical content within this document can be modified without notice. The content of the document content is a recurring audit. For losses due to fire, earthquake, third party access or other accidents, or intentional or accidental abuse, misuse, or use under abnormal conditions repairs are charged to the user. ADFweb.com S.r.l. will not be liable for accidental loss of use or inability to use this product, such as loss of business income. ADFweb.com S.r.l. shall not be liable for consequences of improper use.

## OTHER REGULATIONS AND STANDARDS

### WEEE INFORMATION



Disposal of old electrical and electronic equipment (as in the European Union and other European countries with separate collection systems).

This symbol on the product or on its packaging indicates that this product may not be treated as household rubbish. Instead, it should be taken to an applicable collection point for the recycling of electrical and electronic equipment. If the product is disposed correctly, you will help prevent potential negative environmental factors and human health, which could otherwise be caused by inappropriate disposal. The recycling of materials will help to conserve natural resources. For more information about recycling this product, please contact your local city office, your household waste disposal service or the shop where you purchased the product.

### RESTRICTION OF HAZARDOUS SUBSTANCES DIRECTIVE



The device respects the 2002/95/EC Directive on the restriction of the use of certain hazardous substances in electrical and electronic equipment (commonly referred to as Restriction of Hazardous Substances Directive or RoHS).

### CE MARKING



The product conforms with the essential requirements of the applicable EC directives.

### WARRANTIES AND TECHNICAL SUPPORT:

For fast and easy technical support for your ADFweb.com SRL products, consult our internet support at [www.adfweb.com](http://www.adfweb.com).

Otherwise contact us at the address support@adfweb.com

### RETURN POLICY:

If while using your product you have any problem and you wish to exchange or repair it, please do the following:

- 1) Obtain a Product Return Number (PRN) from our internet support at [www.adfweb.com](http://www.adfweb.com). Together with the request, you need to provide detailed information about the problem.
- 2) Send the product to the address provided with the PRN, having prepaid the shipping costs (shipment costs billed to us will not be accepted).

If the product is within the warranty of twelve months, it will be repaired or exchanged and returned within three weeks.

If the product is no longer under warranty, you will receive a repair estimate.

### PRODUCTS AND RELATED DOCUMENTS:

Part	Description	URL
HD67121	Gateway CANopen / Canopen	<a href="http://www.adfweb.com?product=HD67121">www.adfweb.com?product=HD67121</a>
HD67002	Gateway CANopen / Modbus - RTU	<a href="http://www.adfweb.com?product=HD67002">www.adfweb.com?product=HD67002</a>
HD67004 HD67005	Gateway CANopen / Modbus - Ethernet TCP	<a href="http://www.adfweb.com?product=HD67004">www.adfweb.com?product=HD67004</a>
HD67134	Gateway CANopen / DeviceNet	<a href="http://www.adfweb.com?product=HD67134">www.adfweb.com?product=HD67134</a>
HD67117	CAN bus Repeater	<a href="http://www.adfweb.com?product=HD67117">www.adfweb.com?product=HD67117</a>
HD67216	CAN bus Analyzer	<a href="http://www.adfweb.com?product=HD67216">www.adfweb.com?product=HD67216</a>