

# User Manual

Revision 1.100  
English

## M-Bus / M-Bus Wireless / Modbus TCP Slave - Converter

(Order Code: HD67083-B2-xxxMHz-0, HD67083-B2-xxxMHz-20,



**INDEX:**

	Page
INDEX	2
UPDATED DOCUMENTATION	2
REVISION LIST	2
WARNING	2
TRADEMARKS	2
SECURITY ALERT	3
EXAMPLE OF CONNECTION	4
CONNECTION SCHEME	5
CHARACTERISTICS	7
CONFIGURATION	7
POWER SUPPLY	8
FUNCTION MODES	9
LEDS	10
ETHERNET	11
WM-BUS	11
M-BUS	12
USE OF COMPOSITOR SW67083	13
NEW CONFIGURATION / OPEN CONFIGURATION	14
SOFTWARE OPTIONS	15
SET COMMUNICATION	16
M-BUS	17
MANUFACTURER SPECIFIC DATA	33
UPDATE DEVICE	34
SCAN & DECODE FUNCTION	36
MECHANICAL DIMENSIONS	37
ORDERING INFORMATIONS	38
ACCESSORIES	39
DISCLAIMER	40
OTHER REGULATIONS AND STANDARDS	40
WARRANTIES AND TECHNICAL SUPPORT	41
RETURN POLICY	41

**UPDATED DOCUMENTATION:**

Dear customer, we thank you for your attention and we remind you that you need to check that the following document is:

- Updated
- Related to the product you own

To obtain the most recently updated document, note the “document code” that appears at the top right-hand corner of each page of this document.

With this “Document Code” go to web page [www.adfweb.com/download/](http://www.adfweb.com/download/) and search for the corresponding code on the page. Click on the proper “Document Code” and download the updates.

**REVISION LIST:**

Revision	Date	Author	Chapter	Description
1.000	03/03/2013	Ff	All	First Release
1.001	25/03/2015	Ff	All	Revision
1.002	07/04/2015	Ff	All	Revision
1.100	17/07/2018	Ff	All	New hardware version

**WARNING:**

ADFweb.com reserves the right to change information in this manual about our product without warning. ADFweb.com is not responsible for any error this manual may contain.

**TRADEMARKS:**

All trademarks mentioned in this document belong to their respective owners.

**SECURITY ALERT:****GENERAL INFORMATION**

To ensure safe operation, the device must be operated according to the instructions in the manual. When using the device, legal and safety regulation are required for each individual application. The same applies also when using accessories.

**INTENDED USE**

Machines and systems must be designed so the faulty conditions do not lead to a dangerous situation for the operator (i.e. independent limit switches, mechanical interlocks, etc.).

**QUALIFIED PERSONNEL**

The device can be used only by qualified personnel, strictly in accordance with the specifications.

Qualified personnel are persons who are familiar with the installation, assembly, commissioning and operation of this equipment and who have appropriate qualifications for their job.

**RESIDUAL RISKS**

The device is state-of-the-art and is safe. The instruments can represent a potential hazard if they are inappropriately installed and operated by untrained personnel. These instructions refer to residual risks with the following symbol:

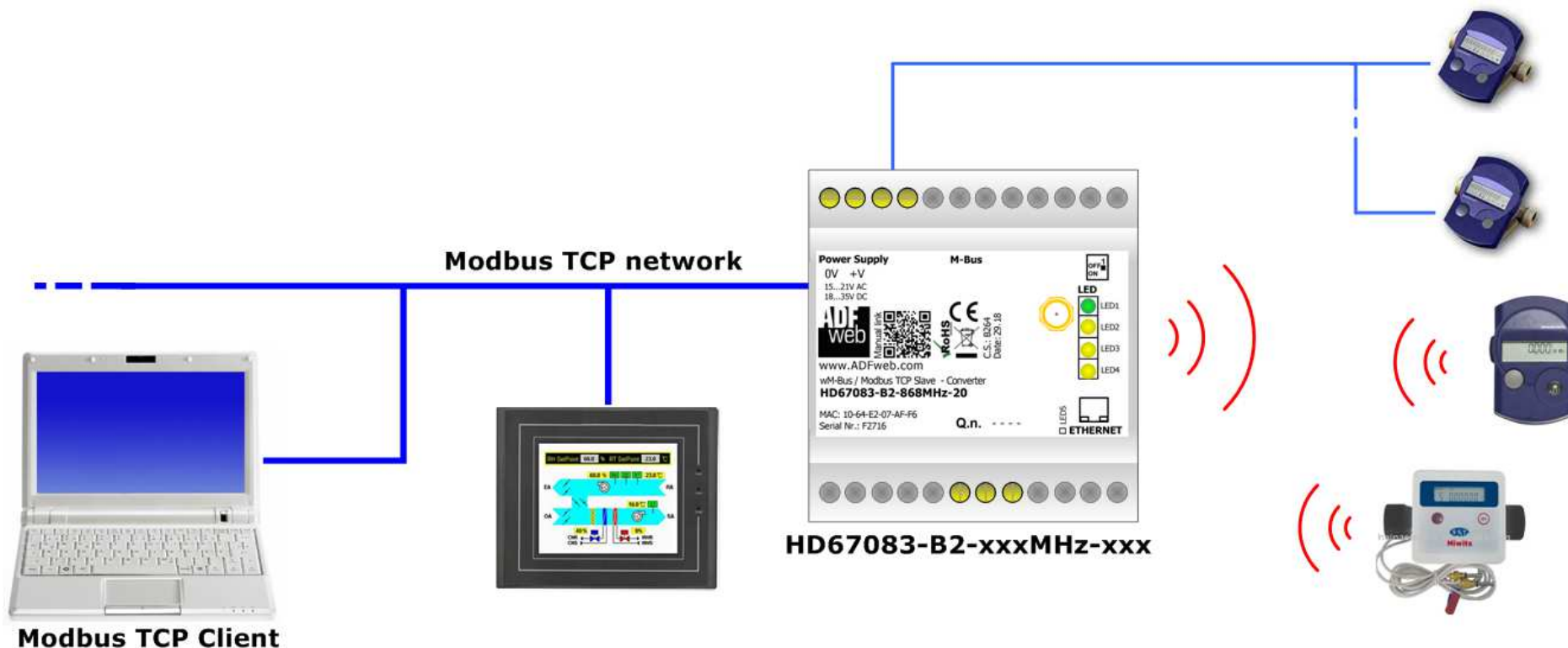


This symbol indicates that non-observance of the safety instructions is a danger for people that could lead to serious injury or death and / or the possibility of damage.

**CE CONFORMITY**

The declaration is made by our company. You can send an email to [or](#) give us a call if you need it.

**EXAMPLE OF CONNECTION:**



**ADFweb** ADFweb.com srl  
 tel. +39 - 0438.30.91.31  
[www.adfweb.com](http://www.adfweb.com)  
[info@adfweb.com](mailto:info@adfweb.com)

**CONNECTION SCHEME:**

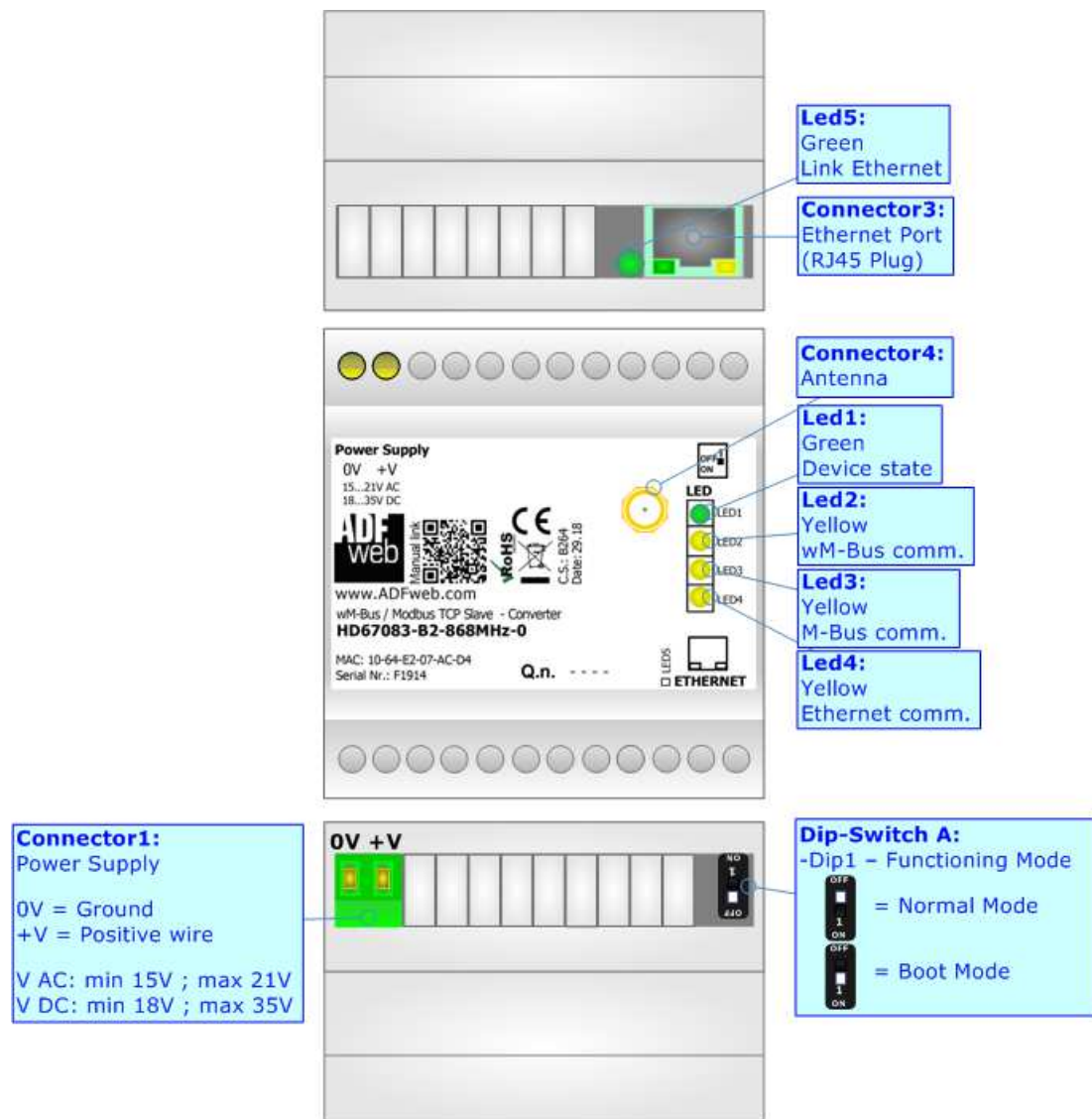


Figure 1a: Connection scheme for HD67083-B2-xxxMHz-0

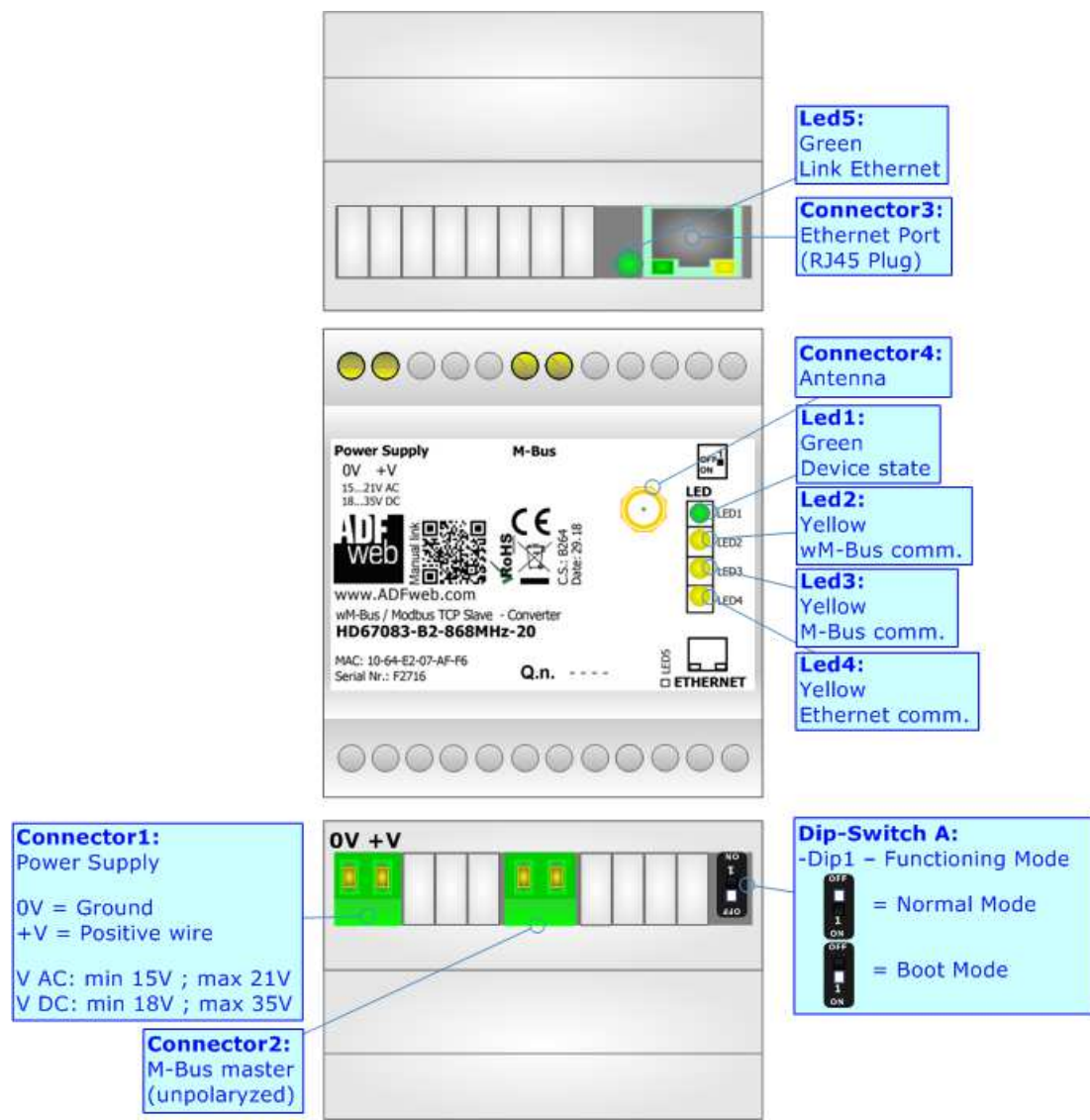


Figure 1b: Connection scheme for HD67083-B2-xxxMHz-xxx

**CHARACTERISTICS:**

The HD67083-B2-xxxMHz-0 and HD67083-B2-xxxMHz-xxx are converters from wM-Bus and M-Bus to Modbus TCP Slave and vice-versa.

They allow the following characteristics:

- Electrical isolation between Ethernet and M-Bus;
- Baud Rate and Parity (for M-Bus on wire) changeable with software;
- Available wM-Bus frequency: 169 MHz or 433 MHz or 868 MHz (in relation to the order code);
- Mountable on 35mm Rail DIN;
- Wide power supply input range: 15...21V AC or 18...35V DC;
- Wide temperature range: -40°C / 85°C [-40°F / +185°F].

**CONFIGURATION:**

You need Compositor SW67083 software on your PC in order to perform the following:

- Define the parameter of Modbus TCP;
- Define the parameter of M-Bus line;
- Define the parameter of wM-Bus line;
- Define which M-Bus variables are readable on Modbus TCP;
- Update the device.

**POWER SUPPLY:**

The devices can be powered at 15...21V AC and 18...35V DC. The consumption depends to the code of the device. For more details see the two tables below.

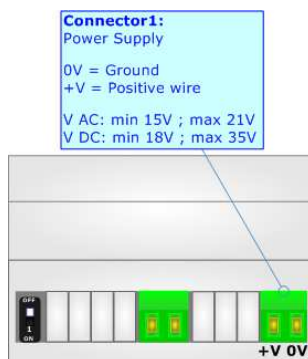
VAC		VDC	
Vmin	Vmax	Vmin	Vmax
15V	21V	18V	35V

Consumption at 24V DC:

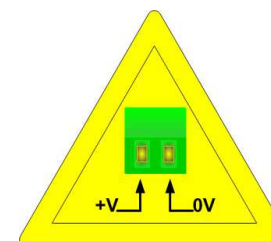
Device	[W/VA]
HD67083-B2-xxxMHz-0	3.5

Device	No Load [W/VA]	Full Load [W/VA]*
HD67083-B2-xxxMHz-20	3.5	4
HD67083-B2-xxxMHz-40		5
HD67083-B2-xxxMHz-80		8
HD67083-B2-xxxMHz-160		14
HD67083-B2-xxxMHz-250		30

\* This value is with all the Slave M-Bus devices of the code (20, 40, 80, 160, 250) connected to the line (wired side)



**Caution: Not reverse the polarity power**



HD67083-B2-xxxMHz-0  
 HD67083-B2-xxxMHz-xxx



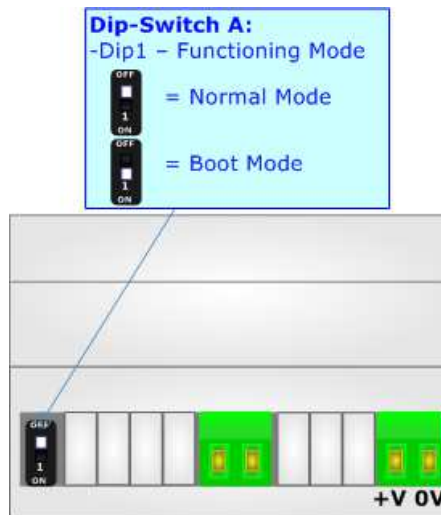
### FUNCTION MODES:

The device has got two functions mode depending of the position of the 'Dip1 of Dip-Switch A':

- The first, with 'Dip1 of Dip-Switch A' at "OFF" position, is used for the normal working of the device;
- The second, with 'Dip1 of Dip-Switch A' at "ON" position, is used for uploading the Project and/or Firmware.

For the operations to follow for the updating, see 'UPDATE DEVICE' section.

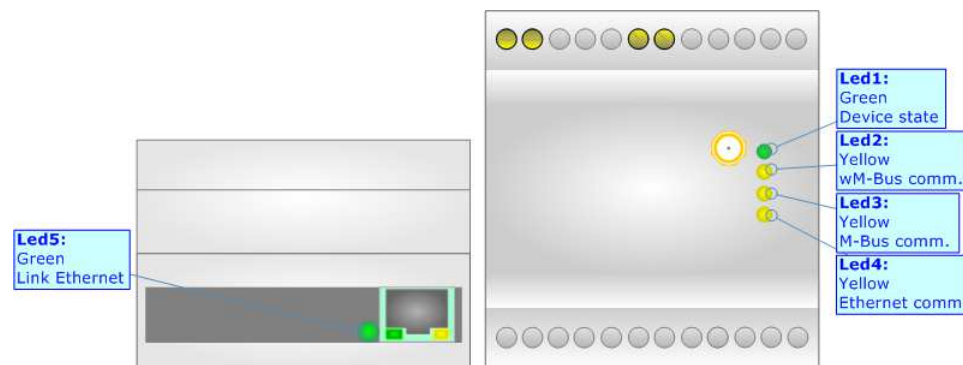
According to the functioning mode, the LEDs will have specifics functions, see 'LEDS' section.



**LEDS:**

The device has got five LEDs that are used to give information of the functioning status. The various meanings of the LEDs are described in the table below.

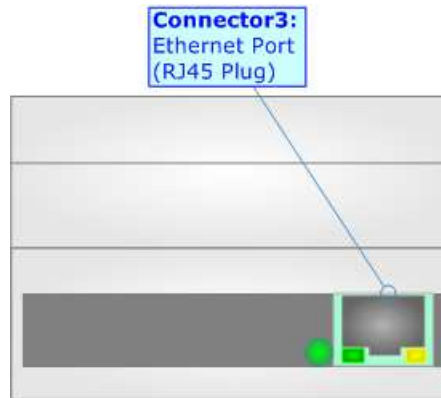
LED	Normal Mode	Boot Mode
1: Device state (green)	Blinks slowly (~1Hz)	Blinks quickly
2: wM-Bus comm. (green)	Blinks quickly when data on wM-Bus arrives	Blinks quickly
3: M-Bus comm. (green) (only for HD67083-B2-xxxMHz-xxx)	Blinks quickly when a reply to a M-Bus request arrives	Blinks quickly
4: Modbus comm.	Changes state when a Modbus TCP request arrives	Blinks quickly
5: Link Ethernet (green)	<b>ON:</b> Ethernet cable connected <b>OFF:</b> Ethernet cable disconnected	<b>ON:</b> Ethernet cable connected <b>OFF:</b> Ethernet cable disconnected



**ETHERNET:**

The Ethernet port is used for the Modbus TCP communication and for programming the device.

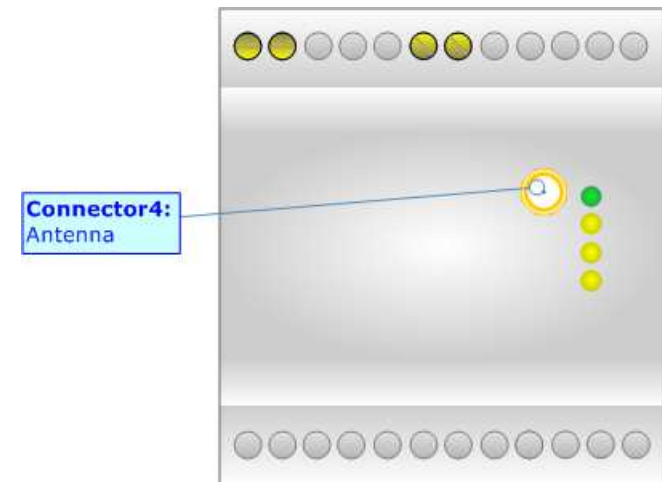
The Ethernet connection must be made using Connector2 of HD67083-B2-xxxMHz-0 or HD67083-B2-xxxMHz-xxx with at least a Category 5E cable. The maximum length of the cable should not exceed 100m. The cable has to conform to the T568 norms relative to connections in cat.5 up to 100 Mbps. To connect the device to an Hub/Switch is recommended the use of a straight cable, to connect the device to a PC/PLC/other is recommended the use of a cross cable.



**WM-BUS:**

The standards of M-Bus Wireless are specified in EN 13757-4. The signal is @ 868Mhz or 433 MHz or 169 MHz (in relation to the order code). Our converter supports wM-Bus Mode S, Mode T and Mode C.

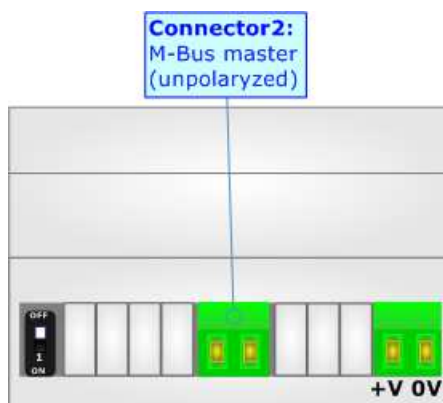
The Antenna connector is a SMA Female ('Female Outer Shell' and 'Female Receptacle') so the Antenna must have a SMA Male connector.



**M-BUS:**

The M-Bus is a unpolarized bus.

A two wire standard telephone cable (JYStY N\*2\*0.8 mm) is used as the transmission medium for the M-Bus. The maximum distance between a slave and the repeater is 350m; this length corresponds to a cable resistance of up 29 $\Omega$ . This distance applies for the standard configuration having Baud rates between 300 and 9600 Baud, and a maximum of 250 slaves. The maximum distance can be increased by limiting the Baud rate and using fewer slaves, but the bus voltage in the space state must at no point in a segment fall below 12V, because of the remote powering of the slaves. In the standard configuration the total cable length should not exceed 1000m, in order to meet the requirement of a maximum cable capacitance of 180nF. (*Taken from M-Bus specifics*)



### USE OF COMPOSITOR SW67083:

To configure the Converter, use the available software that runs with Windows called SW67083. It is downloadable from the site [www.adfweb.com](http://www.adfweb.com) and its operation is described in this document (*this manual is referenced to the last version of the software present on our web site*). The software works with MSWindows (XP, Vista, Seven, 8, 10; 32/64bit).

When launching the SW67083, the window below appears (Fig. 2).



**Note:**

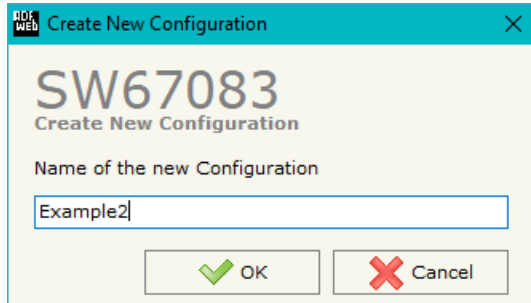
It is necessary to have installed .Net Framework 4.



Figure 2: Main window for SW67083

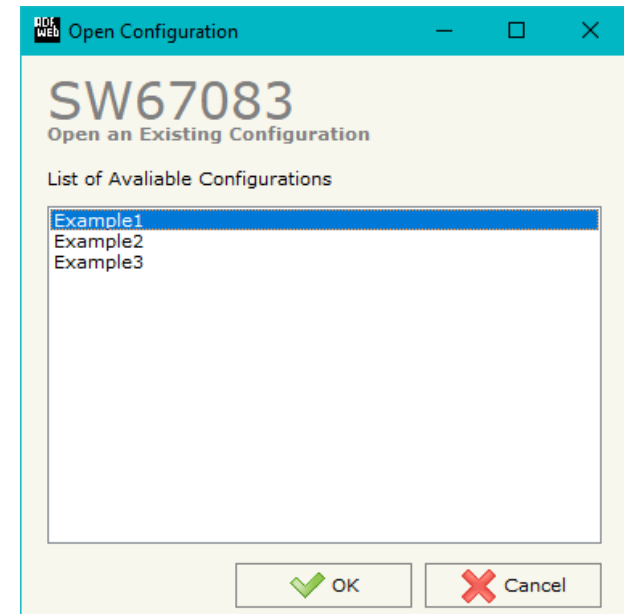
**NEW CONFIGURATION / OPEN CONFIGURATION:**

The “**New Configuration**” button creates the folder which contains the entire device’s configuration.




A device’s configuration can also be imported or exported:

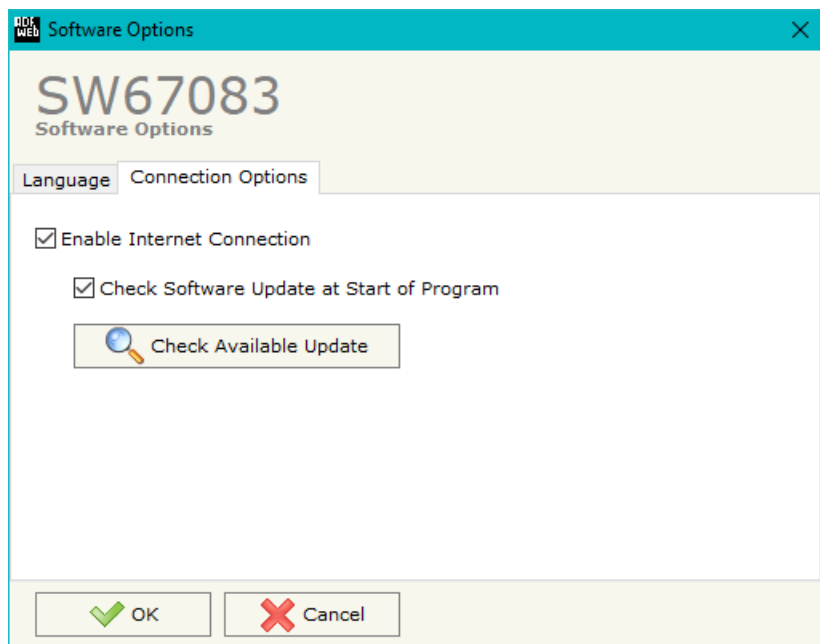
- To clone the configurations of a Programmable “M-Bus / M-Bus Wireless / Modbus TCP Slave - Converter” in order to configure another device in the same manner, it is necessary to maintain the folder and all its contents;
- To clone a project in order to obtain a different version of the project, it is sufficient to duplicate the project folder with another name and open the new folder with the button “**Open Configuration**”.



### SOFTWARE OPTIONS:

By pressing the “**Settings**” () button there is the possibility to change the language of the software and check the updatings for the compositor.

In the section “Language” it is possible to change the language of the software.



In the section “Connection Options”, it is possible to check if there are some updatings of the software compositor in ADFweb.com website. Checking the option “**Check Software Update at Start of Program**”, the SW67083 check automatically if there are updatings when it is launched.

## SET COMMUNICATION:

This section define the fundamental communication parameters of buses, Modbus, M-Bus and wM-Bus.

By Pressing the **"Set Communication"** button from the main window for SW67083 (Fig. 2) the window "Set Communication" appears (Fig. 3). The window is divided in four sections.

In the section "Select Device" it is possible to select the type of converter (M-Bus port present or not).

The means of the fields for "Modbus TCP Slave" are:

- ➔ In the field **"IP ADDRESS"** the IP address to assign to the converter is defined;
- ➔ In the fields **"SUBNET Mask"** the SubNet Mask to assign to the converter is defined;
- ➔ In the fields **"GATEWAY"** the default gateway of the net is defined. This feature can be enabled or disabled pressing the Check Box field. This feature is used for going out of the net.
- ➔ In the field **"Port"** the TCP port used for the Modbus TCP communication is defined;
- ➔ In the field **"Connection TimeOut (min)"** the time that the converter will wait before closing the unused TCP connections opened is defined.

The means of the fields for "wM-Bus" are:

- ➔ In the field **"Mode"** the communication mode used for the M-Bus Wireless communication is defined;
- ➔ In the field **"Radio Channel"** the Radio Channel used for the M-Bus Wireless communication is defined (only for 169 MHz version).

The means of the fields for "M-Bus" are (present only if the M-Bus port is "Present"):

- ➔ In the field **"Baudrate"** the data rate of the M-Bus line is defined;
- ➔ In the field **"Parity"** the parity of the M-Bus line is defined;
- ➔ If the field **"M-Bus Polls"** it is possible to select how the M-Bus polls are sent (fixed to "Cyclic");
- ➔ In the field **"Node State value when slave device is not present"** it is possible to insert the value to assign to the "Node State" when the Gateway doesn't find the interrogated M-Bus slave.

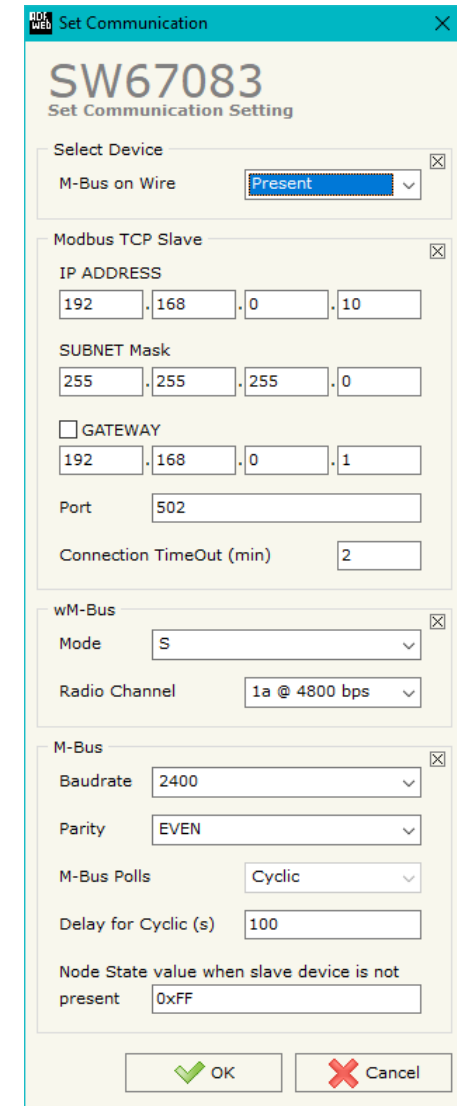


Figure 3: "Set Communication" window



## M-BUS

By Pressing the **"M-Bus"** button from the main window for SW67083 (Fig. 2) the window "M-Bus Network" appears (Fig. 4).

In the section "Nodes" it is possible to create the nodes of M-Bus line:

- In the field **"Description"** it is possible to write a short description of the node.
- In the field **"M-Bus Type"** it is possible to select if the node uses M-Bus (on wire) or wM-Bus.

### SECTION NODES (M-BUS NODES):

- In order to create a new node it is necessary to select which address use, selecting **"Primary ID"** or **"Secondary ID"**, to makes the requests and then insert the "Primary Address" (from 1 to 250) or the Secondary Address" (from 0 to 99999999) of M-Bus device.
- In the field **"Node State"** it is possible to insert an address Modbus that contain the Status of the M-Bus device. If you don't need to know this, put this register at 0.
- In the field **"Identification Number"** it is possible to insert an address Modbus that contain the Identification Number of the M-Bus device. You have to read two consecutive registers for knowing the value. If you don't need to know this, put this register at 0.
- If the field **"Convert BCD in Integer Identification Num."** is checked the Converter converts the Identification Number that is normally expressed in BCD in a Integer.
- In the field **"Swap Identification Num."** it is possible to select the swap mode of the Identification Number. If swap isn't necessary you have to select "None"; otherwise see the section "Swap Identification" (page xxx) of this document for select the swap mode.
- If the field **"Send SND\_NKE"** is checked, the Converter send the "SND\_NKE" frame to start the communication.

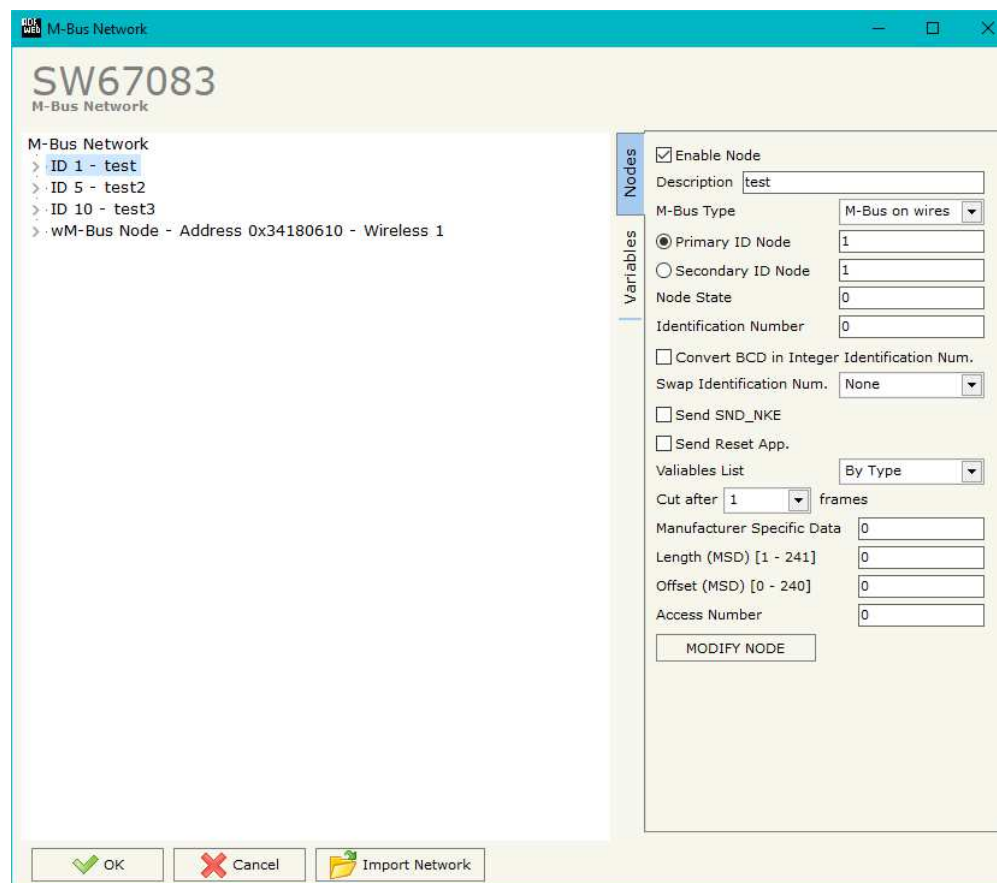


Figure 4a: "M-Bus Network" window

- In the field "**Send Reset App.**" Is checked the Converter send the "Application Reset" command to the slave.
- In the field "**Variables List**" it is possible to select which type of variables definition to use. If is selected "By Type" it is necessary to fill all fields, in the section Variables, with the correct values; otherwise if "By Position" is selected you can insert the progressive number of the variable that you need (page 29 for more information).
- In the field "**Cut after**" it is possible to select after how many frames stops data requests. It is used when the slave has got many data frames and you don't need to read all them.
- In the field "**Manufacturing Specific Data**" is possible to insert the starting address Modbus from which you want to save the information of Manufacturer Specific (after DIF=0x0F or DIF=0x1F).
- In the field "**Length (MSD) [1 - 241]**" is possible to insert the length of the data you need to save.
- In the field "**Offset (MSD) [0 - 240]**" is possible to insert the offset from where save the data;
- In the field "**Access Number**" is possible to define a Modbus register where saving the number of accesses to the meter.

After that, pressing the "**ADD NODE**" button, a new node appears in the left side of the window. In order to modify a created node it is necessary to select the desired node, change the wrong items and then press the "**MODIFY NODE**" button.

**SECTION NODES (WM-BUS NODES):**

- In the field "**Manufacturer ID**" it is necessary to define the Manufacturer ID of the wM-Bus node.
- In the field "**Address**" it is necessary to define the ID of the wM-Bus node.
- If the field "**Version**" it is necessary to define the version of the wM-Bus node.
- In the field "**Device Type**" it is possible to define the Type of the wM-Bus node.
- The field "**Key Enable**" is used to decode the M-Bus frame sent by the wM-Bus node if it uses encrypted communication. In the following 16 fields, you have to specify the key to decode the message.
- If the field "**Node State**" is checked the gateway reserves one byte at the starting of internal data array and saves the status of the counter.
- If the field "**Identification Number**" is checked the gateway reserves four bytes at the starting of internal data array and saves the Secondary Address of the device.
- If the field "**RSSI**" is checked the gateway reserves one byte at the starting of internal data array and saves the signal quality of the device.
- In the field "**Access Number**" is possible to define a Modbus register where saving the number of accesses to the meter.
- If the field "**Convert BCD in Integer Identification Num.**" is checked the Converter converts the Identification Number that is normally expressed in BCD in a Integer.

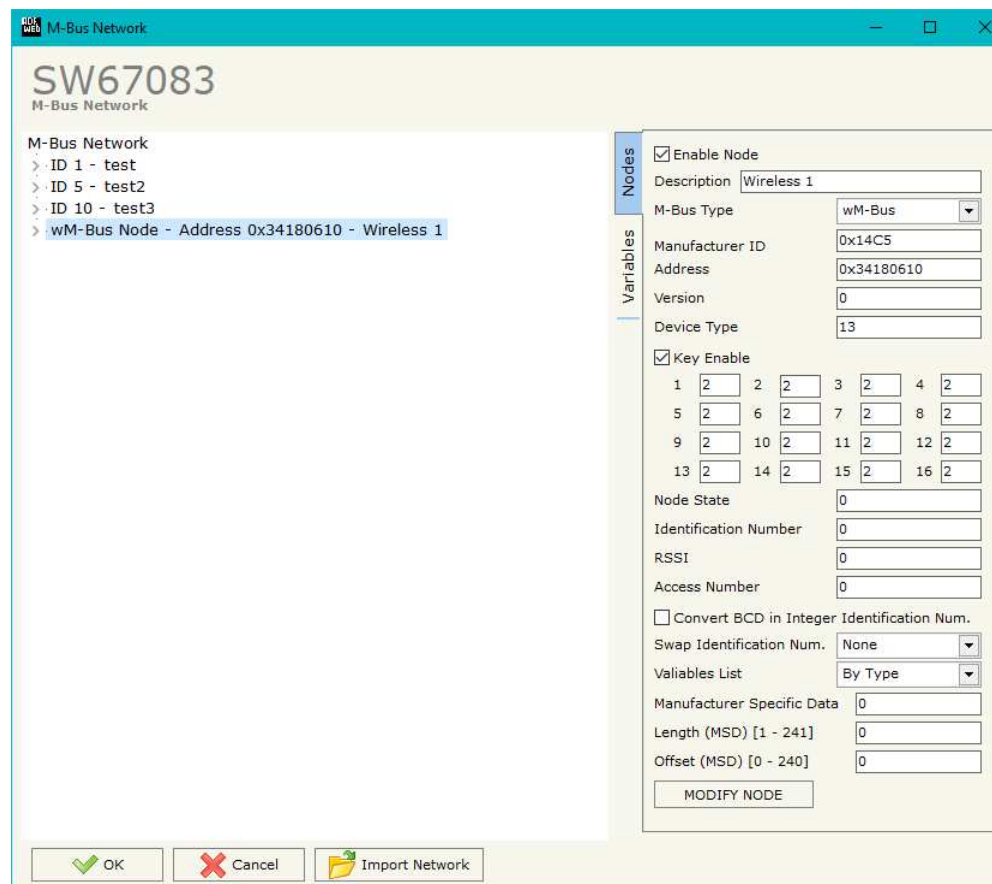


Figure 4b: "M-Bus Network" window

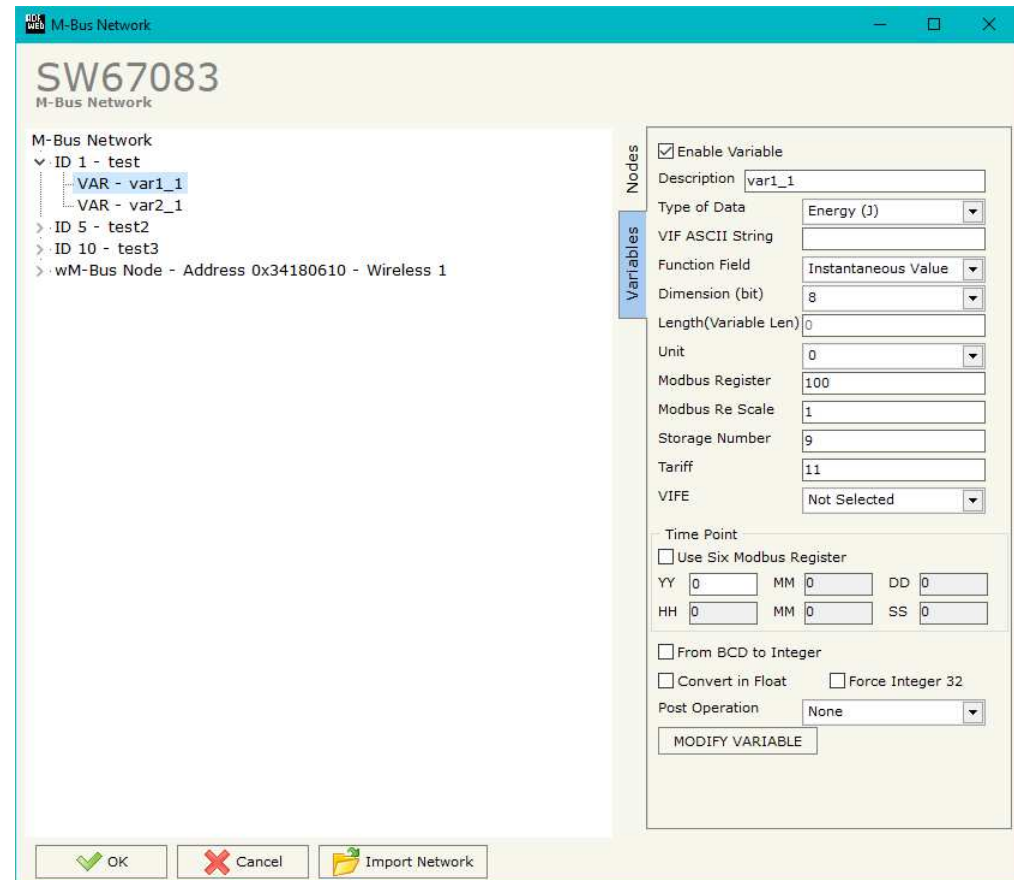
- In the field "**Swap Identification Num.**" it is possible to select the swap mode of the Identification Number. If swap isn't necessary you have to select "None"; otherwise see the section "Swap Identification" (page 32) of this document for select the swap mode.
- In the field "**Variables List**" it is necessary to select which type of variables definition to use. If is selected "By Type" it is necessary to fill all fields, in the section Variables, with the correct values; otherwise if "By Position" is selected you can insert the progressive number of the variable that you need (page 29 for more information).
- In the field "**Manufacturing Specific Data**" is possible to insert the starting address Modbus from which you want to save the information of Manufacturer Specific (after DIF=0x0F or DIF=0x1F).
- In the field "**Length (MSD) [1 - 241]**" is possible to insert the length of the data you need to save.
- In the field "**Offset (MSD) [0 - 240]**" is possible to insert the offset from where save the data.

After that, pressing the "**ADD NODE**" button, a new node appears in the left side of the window. In order to modify a created node it is necessary to select the desired node, change the wrong items and then press the "**MODIFY NODE**" button.

### SECTION VARIABLES (BY TYPE):

Selecting the desired node it is possible to add a variable. In order to create a new variable it is necessary to fill these items:

- To use the created variable the field **"Enable Variable"** must be checked. If you have created a variable but for the moment it is unused it is possible to uncheck the field "Enable Variable" without delete it;
- In the field **"Description"** it is possible to write a description of the variable (it isn't a necessary information, it helps the readability of the tree of network);
- The field **"Type of Data"** is used to select the unit of measure;
- In the field **"VIF ASCII String"** insert the string of VIF. It is possible to use this field only if the "Type of Data" is "VIF is in ASCII";
- In the field **"Function Field"** it is necessary to select the type of data;
- The field **"Dimension"** is used to select the dimension of the variable (8, 16, 24, 32, 32 real, 48, 64 bit, Variable Length);
- In the field **"Length(Variable Len)"** insert the length of the data in the case of the dimension is "Variable Length";
- In the field **"Unit"** if it is necessary it is possible to select the unit of that variable. The Unit is used for indicates from which device the data come;
- In the field **"Modbus Register"** it is necessary to insert the value of Modbus Register that contains the data of the M-Bus device. It is possible to insert from Modbus Register "1" to "60000";
- In the field **"Modbus Re Scale"** it is necessary to insert the value of Modbus Register that contains the value of measure scale. If the scale is not necessary, you have to insert the number "0" in this field. It is possible to insert from Modbus Register "1" to "60000";
- In the field **"Storage Number"** if it is necessary it is possible to insert the value of storage counter of that variable. With this field the slave can indicate and transmit various stored counter states or historical values, in the order in which they occur;



- In the field "**Tariff**" if it is necessary it is possible to insert the value of the tariff of that variable. The Tariff is used for indicates from which device the data come;
- In the field "**VIFE**" it is possible to select a sub-type of "Type of Data";
- If the field "**Use Six Modbus Register**" and the "Type of Data" is "Time Point" it is possible to read the information of Year, Month, Day, Hour, Minutes, Seconds on six consecutive Modbus registers without decoding the data (if not selected the values are the same of the reply of the slave device, so coded with a determinate structure). You have to insert the first Modbus Register.
- If the field "**From BCD to Integer**" is checked the Converter converts the BCD value of variable in Integer format. This happens only if the variable is in BCD format; if it isn't nothing changes.
- If the field "**Convert in Float**" is checked the Converter converts the data into Float type. Every variable occupies two consecutive Modbus Registers and the first one is the one defined in "Modbus Register". In this case the float value is multiplied by the "Modbus Re Scale" automatically;
- If the field "**Force Integer 32**" is checked the Converter maps the variables with a dimension <32 bit in two consecutive Modbus registers as a 32 bit variables;
- In the field "**Post Operation**" it is possible to define an operation on the data read before mapping them on Modbus registers.

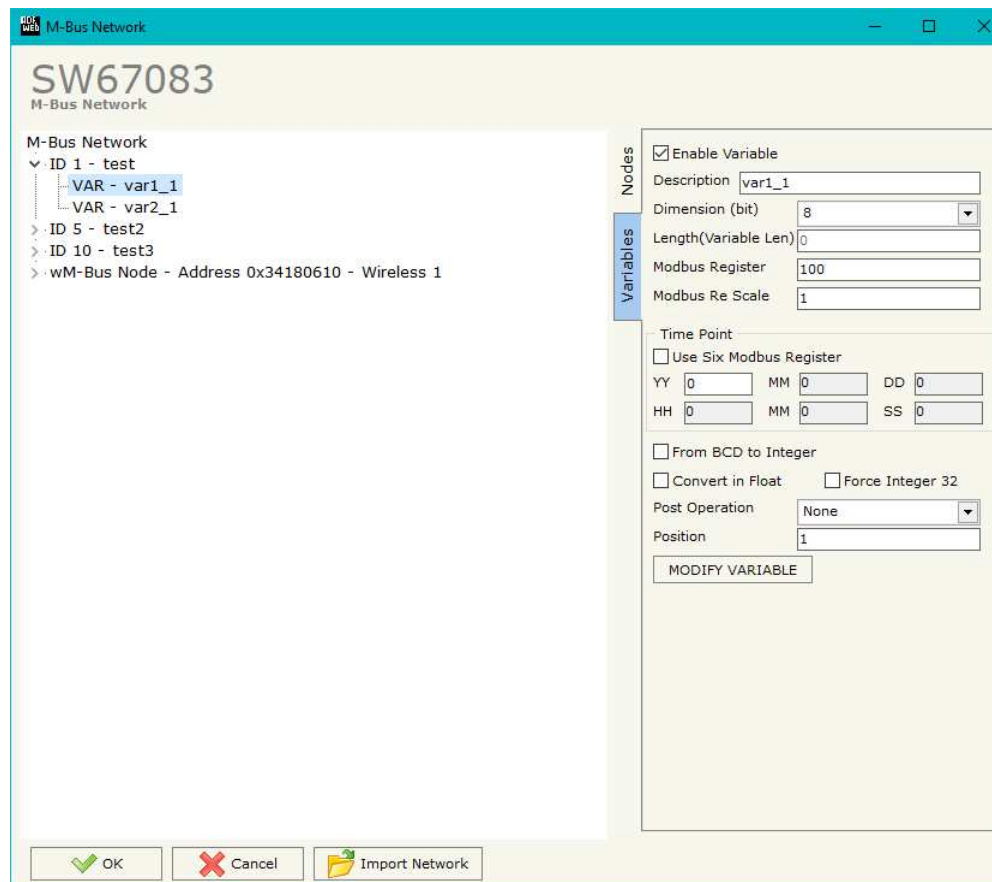
Having completed this fields, to add the variable the button "**ADD VARIABLE**" must be pressed.

In order to modify a created variable it is necessary to select the desired variable, change the wrong items and then press the "**MODIFY VARIABLE**" button.

### **SECTION VARIABLES (BY POSITION):**

Selecting the desired node it is possible to add a variable. In order to create a new variable it is necessary to fill these items:

- To use the created variable the field **“Enable Variable”** must be checked. If you have created a variable but for the moment it is unused it is possible to uncheck the field **“Enable Variable”** without delete it;
- In the field **“Description”** it is possible to write a description of the variable (it isn't a necessary information, it helps the readability of the tree of network);
- The field **“Dimension”** is used to select the dimension of the variable (8, 16, 24, 32, 32 real, 48, 64 bit, Variable Length);
- In the field **“Length(Variable Len)”** insert the length of the data in the case of the dimension is **“Variable Length”**;
- In the field **“Modbus Register”** it is necessary to insert the value of Modbus Register that contains the data of the M-Bus device. It is possible to insert from Modbus Register **“1”** to **“60000”**;
- In the field **“Modbus Re Scale”** it is necessary to insert the value of Modbus Register that contains the value of measure scale. If the scale is not necessary, you have to insert the number **“0”** in this field. It is possible to insert from Modbus Register **“1”** to **“60000”**;
- If the field **“Use Six Modbus Register”** and the **“Type of Data”** is **“Time Point”** it is possible to read the information of Year, Month, Day, Hour, Minutes, Seconds on six consecutive Modbus registers without decoding the data (if not selected the values are the same of the reply of the slave device, so coded with a determinate structure). You have to insert the first Modbus Register;
- If the field **“From BCD to Integer”** is checked the Converter converts the BCD value of variable in Integer format. This happens only if the variable is in BCD format; if it isn't nothing changes;



- If the field "**Force Integer 32**" is checked the Converter maps the variables with a dimension <32 bit in two consecutive Modbus registers as a 32 bit variables;
- In the field "**Post Operation**" it is possible to define an operation on the data read before mapping them on Modbus registers.

In the field "**Position**" insert the number of the variable that you want on Modbus.

Having completed this fields, to add the variable the button "**ADD VARIABLE**" must be pressed.

In order to modify a created variable it is necessary to select the desired variable, change the wrong items and then press the "**MODIFY VARIABLE**" button.



Example:

0x68 - Start Byte  
 0xBD - L Field  
 0xBD - L Field  
 0x68 - Start Byte  
 0x08 - C Field  
 0x02 - A Field  
 0x72 - CI Field

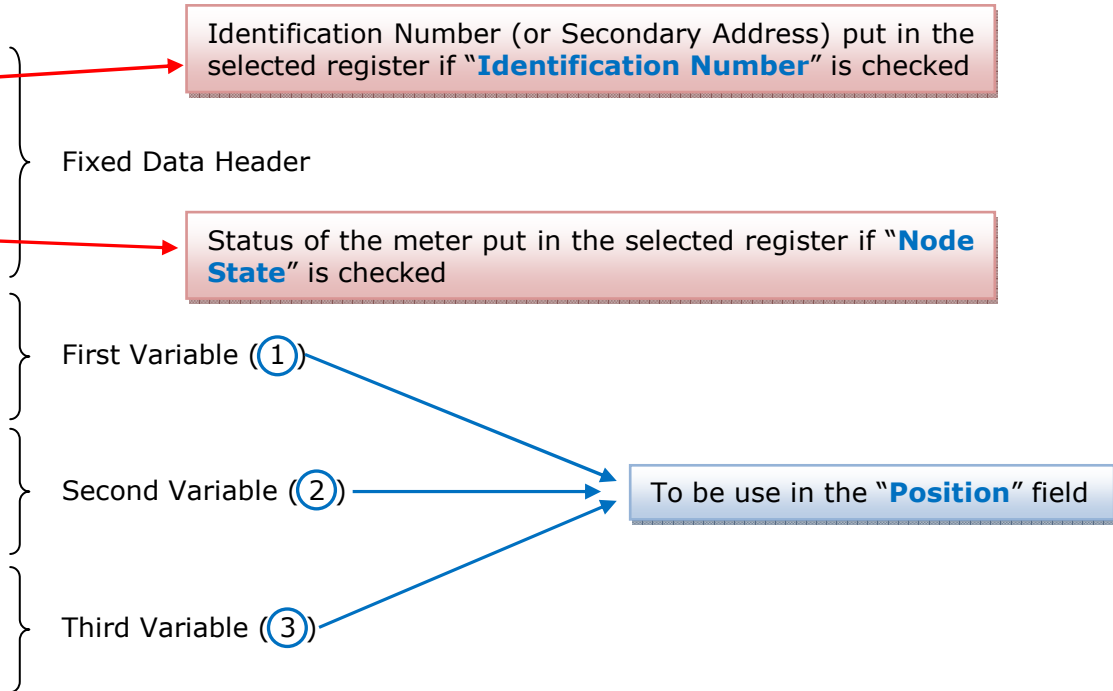
0x71 - Identification Number (Byte 4of4)  
 0x65 - Identification Number (Byte 3of4)  
 0x45 - Identification Number (Byte 2of4)  
 0x28 - Identification Number (Byte 1of4)  
 0x4D - Manufacturer (Byte 2of2)  
 0x6A - Manufacturer (Byte 1of2)  
 0x81 - Version  
 0x04 - Medium  
 0x3E - Access Number  
 0x27 - Status  
 0x00 - Signature (Byte 2of2)  
 0x00 - Signature (Byte 1of2)

0x04 - DIF  
 0x79 - VIF Identification  
 0x00 - Data (Byte 4of4)  
 0x00 - Data (Byte 3of4)  
 0x00 - Data (Byte 2of4)  
 0x00 - Data (Byte 1of4)

0x04 - DIF  
 0x06 - VIF Energy  
 0x00 - Data (Byte 4of4)  
 0x00 - Data (Byte 3of4)  
 0x00 - Data (Byte 2of4)  
 0x00 - Data (Byte 1of4)

0x44 - DIF  
 0x06 - VIF Energy  
 0x00 - Data (Byte 4of4)  
 0x00 - Data (Byte 3of4)  
 0x00 - Data (Byte 2of4)  
 0x00 - Data (Byte 1of4)

... Other Variables  
 ...  
 0x55 - Check Sum  
 0x16 - Stop Byte



**COPY, PASTE AND DELETE ITEMS:**

By pressing the right button of the mouse over an item (Variable or Node) it is possible to Copy, Paste and Delete.

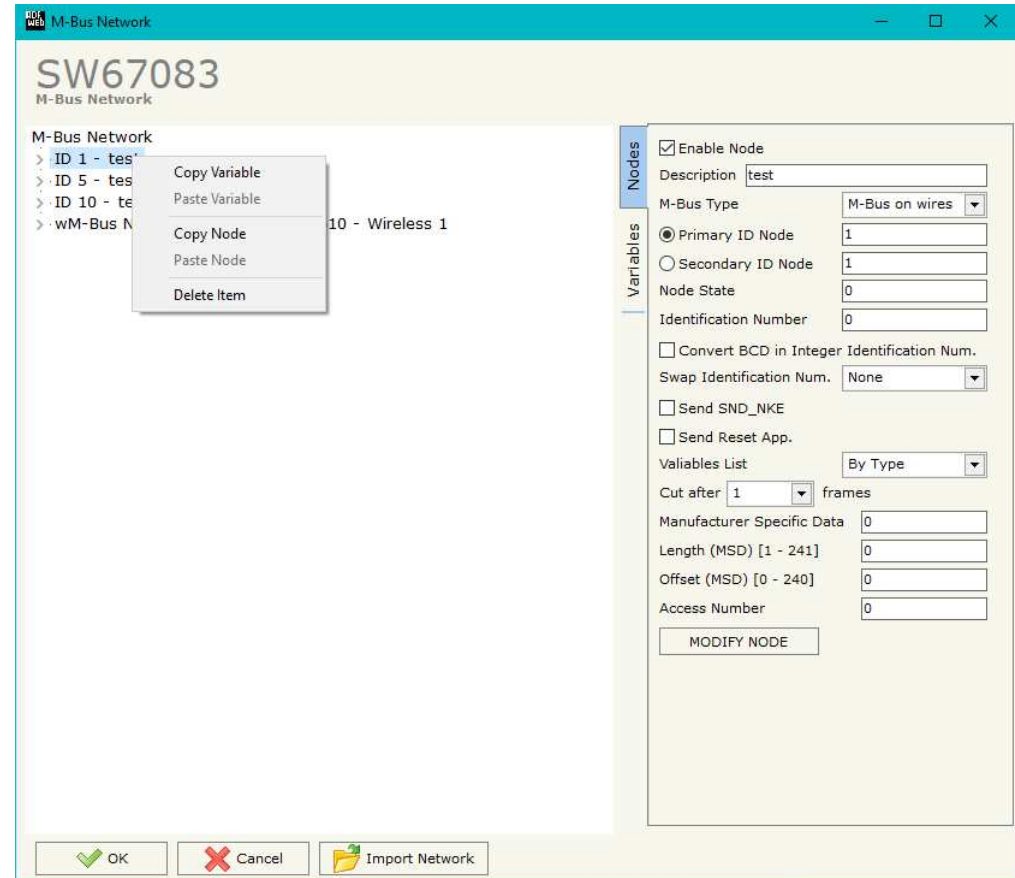
It is possible to Copy a variable from a Node and copy it to another Node, or copy a Variable from a project and paste in another one.

It is also possible to copy an entire Node with all its Variables.



**Note:**

By pressing the **“Import Network”** button is possible to import the file generated by the Analyzer HD67031.



Possible choices for the fields used to create a variable:

**Type of Data:**

- |\_Energy (Wh)
- |\_Energy (J)
- |\_Volume (m<sup>3</sup>)
- |\_Mass (Kg)
- |\_On Time
- |\_Operating Time
- |\_Power (W)
- |\_Power (J/h)
- |\_Volume Flow (m<sup>3</sup>/h)
- |\_Volume Flow Ext. (m<sup>3</sup>/min)
- |\_Volume Flow Ext. (m<sup>3</sup>/s)
- |\_Mass Flow (Kg/h)
- |\_Flow Temperature (°C)
- |\_Return Temperature (°C)
- |\_Temperature Difference (K)
- |\_External Temperature (°C)
- |\_Pressure (bar)
- |\_Averaging Duration
- |\_Actuality Duration
- |\_Type of data in VIFE
- |\_Time Point
- |\_VIF is in ASCII
- |\_Unit for H.C.A.
- |\_Fabrication No
- |\_(Enhaced) Identification
- |\_Bus Address

**Function Field:**

- |\_Instantaneous Value
- |\_Minimum Value
- |\_Maximum Value
- |\_Value During Error State

**Dimension (bit):**

- |\_8
- |\_16
- |\_24
- |\_32
- |\_32 real
- |\_48
- |\_64
- |\_Variable Length

**VIFE:**

- |   |   |
|---|---|
| <ul style="list-style-type: none"> <li>[_ Not Selected</li> <li>[_ Credit of the nominal local legal currency units</li> <li>[_ Debit of the nominal local legal currency units</li> <li>[_ Access Number (transmission count)</li> <li>[_ Medium (as in fixed header)</li> <li>[_ Manufacturer (as in fixed header)</li> <li>[_ Parameter set identification</li> <li>[_ Model/Version</li> <li>[_ Hardware Version #</li> <li>[_ Firmware Version #</li> <li>[_ Software Version #</li> <li>[_ Customer Location</li> <li>[_ Customer</li> <li>[_ Access Code User</li> <li>[_ Access Code Operator</li> <li>[_ Access Code System Operator</li> <li>[_ Access Code Developer</li> <li>[_ Password</li> <li>[_ Error flags (binary)</li> <li>[_ Error mask</li> <li>[_ Digital Output (binary)</li> <li>[_ Digital Input (binary)</li> <li>[_ Baudrate [Baud]</li> <li>[_ response delay time [bittimes]</li> <li>[_ Retry</li> <li>[_ First storage # for cyclic storage</li> <li>[_ Last storage # for cyclic storage</li> <li>[_ Size of storage block</li> <li>[_ Storage interval [sec(s)..day(s)]</li> <li>[_ Storage interval month(s)</li> <li>[_ Storage interval year(s)</li> <li>[_ Duration since last readout[sec(s)..day(s)]</li> <li>[_ Start (date/time) of tariff</li> <li>[_ Duration of tariff (nn=01..11:min to day)</li> <li>[_ Period of tariff [sec(s) to day(s)]</li> </ul> | <ul style="list-style-type: none"> <li>[_ Period of tariff months(s)</li> <li>[_ Period of tariff year(s)</li> <li>[_ dimensionless/ no VIF</li> <li>[_ Volts</li> <li>[_ Ampere</li> <li>[_ Reset counter</li> <li>[_ Comulation counter</li> <li>[_ Control signal</li> <li>[_ Day of week</li> <li>[_ Week number</li> <li>[_ Time point of day change</li> <li>[_ State of parameter activation</li> <li>[_ Special supplier information</li> <li>[_ Duration since last comulation [hour(s)..year(s)]</li> <li>[_ Operation time battery [hour(s)..year(s)]</li> <li>[_ Date and time of battery change</li> <li>[_ Energy MWh</li> <li>[_ Energy GJ</li> <li>[_ Volume</li> <li>[_ Mass</li> <li>[_ Volume 0,1 feet<sup>3</sup></li> <li>[_ Volume 0,1 american gallon</li> <li>[_ Volume 1 american gallon</li> <li>[_ Volume flow 0,001 american gallon/min</li> <li>[_ Volume flow 1 american gallon/min</li> <li>[_ Volume flow 1 american gallon/h</li> <li>[_ Power MW</li> <li>[_ Power GJ/h</li> <li>[_ Flow Temperature</li> <li>[_ Return Temperature</li> <li>[_ Temperature Difference</li> <li>[_ External Temperature</li> <li>[_ Cold/Warm Temperature Limit °F</li> <li>[_ Cold/Worm Temperature Limit °C</li> <li>[_ Cumul. count max power</li> </ul> |
|---|---|

- \_ per second
- \_ per minute
- \_ per hour
- \_ per day
- \_ per week
- \_ per month
- \_ per year
- \_ per revolution/measurement
- \_ increment per input pulse on input channel
- \_ increment per output pulse on output channel
- \_ per liter
- \_ per m<sup>3</sup>
- \_ per kg
- \_ per K (Kelvin)
- \_ per kWh
- \_ per GJ
- \_ per kW
- \_ per (K\*I)(Kelvin\*liter)
- \_ per V (Volt)
- \_ per A (Ampere)
- \_ multiplied by sek
- \_ multiplied by sek/V
- \_ multiplied by sek/A
- \_ start date(/time) of
- \_ VIF contains uncorrected unit instead of corrected unit
- \_ Accumulation only if positive contributions
- \_ Accumulation of abs value only if negative contributions
- \_ upper/lower limit value
- \_ # of exceeds of lower/upper limit
- \_ Date(/time) of begin/end of first/last lower/upper limit exceed

- \_ Duration of limit exceed
- \_ Duration of first/last
- \_ Date(/time) of first/last begin/end
- \_ Multiplicative currection factor
- \_ Additive correction constant \* unit of VIF (offset)
- \_ Multiplicative correction factor: 10<sup>3</sup>
- \_ future value
- \_ next VIFE's and data of this block are manufacturer specific
- \_ None
- \_ Too many DIFE's
- \_ Storage number not implemented
- \_ Unit number not implemented
- \_ Tariff number not implemented
- \_ Function not implemented
- \_ Data class not implemented
- \_ Data size not implemented
- \_ Too many VIFE's
- \_ Illegal VIF-Group
- \_ Illegal VIF-Exponent
- \_ VIF/DIF mismatch
- \_ Unimplemented action
- \_ No data available (undefined value)
- \_ Data overflow
- \_ Data underflow
- \_ Data error
- \_ Premature end of record

**Swap Identification:**

This field is used for select the Swap mode of Identification Number.

At the moment there are these possibilities:

- None;
- Type 1.

Examples:

- Identification Number (Secondary Address): 12345678; Address Register 1000; Convert BCD in Integer Identification Num. not checked.

None	Type 1
1000: 0x1234	1000: 0x5678
1001: 0x5678	1001: 0x1234

- Identification Number (Secondary Address): 12345678; Address Register 1000; Convert BCD in Integer Identification Num. checked.

None	Type 1
1000: 0x00BC	1000: 0x614E
1001: 0x614E	1001: 0x00BC

To know the meaning of value read in the "Modbus Re Scale" field, you must follow this table (x = Value read in Modbus Re Scale):

Description	Range Coding	Range
Energy	$10^{(x-3)}$ Wh	0.001 Wh to 10000 Wh
Energy	$10^{(x)}$ J	0.001 kJ to 10000 kJ
Volume	$10^{(x-6)}$ m <sup>3</sup>	0.001 l to 10000 l
Mass	$10^{(x-3)}$ kg	0.001 kg to 10000 kg
On Time	x = 0 Seconds x = 1 Minutes x = 2 Hours x = 3 Days	
Operating Time	coded like On Time	
Power	$10^{(x-3)}$ W	0.001 W to 10000 W
Power	$10^{(x)}$ J/h	0.001 kJ/h to 10000 kJ/h
Volume Flow	$10^{(x-6)}$ m <sup>3</sup> /h	0.001 l/h to 10000 l/h
Volume Flow Ext.	$10^{(x-7)}$ m <sup>3</sup> /min	0.0001 l/min to 1000 l/min
Volume Flow Ext.	$10^{(x-9)}$ m <sup>3</sup> /s	0.001 ml/s to 10000 ml/s
Mass Flow	$10^{(x-3)}$ kg/h	0.001 kg/h to 10000 kg/h
Flow Temperature	$10^{(x-3)}$ °C	0.001 °C to 1 °C
Return Temperature	$10^{(x-3)}$ °C	0.001 °C to 1 °C
Temperature Difference	$10^{(x-3)}$ K	1 mK to 1000 mK
External Temperature	$10^{(x-3)}$ °C	0.001 °C to 1 °C
Pressure	$10^{(x-3)}$ bar	1 mbar to 1000 mbar
Averaging Duration	coded like On Time	
Actuality Duration	coded like On Time	
Time Point	x = 0 Date x = 1 Time&Date	Data type G Data type F
Unit for H.C.A.		dimensionless

Data type F:

$2^7$	$2^6$	$2^5$	$2^4$	$2^3$	$2^2$	$2^1$	$2^0$
$2^{15}$	$2^{14}$	$2^{13}$	$2^{12}$	$2^{11}$	$2^{10}$	$2^9$	$2^8$
$2^{23}$	$2^{22}$	$2^{21}$	$2^{20}$	$2^{19}$	$2^{18}$	$2^{17}$	$2^{16}$
$2^{31}$	$2^{30}$	$2^{29}$	$2^{28}$	$2^{27}$	$2^{26}$	$2^{25}$	$2^{24}$

- Min (0 ... 59);
- Hour (0 ... 23);
- Day (1 ... 31);
- Month (1 ... 12);
- Year (0 ... 99);
- Time Invalid (0=Valid, 1=Invalid);
- Summer Time (0=Standard Time, 1=Summer Time);
- Reserved (0).

Data type G:

$2^7$	$2^6$	$2^5$	$2^4$	$2^3$	$2^2$	$2^1$	$2^0$
$2^{15}$	$2^{14}$	$2^{13}$	$2^{12}$	$2^{11}$	$2^{10}$	$2^9$	$2^8$

- Day (1 ... 31);
- Month (1 ... 12);
- Year (0 ... 99).

For example, if you have defined:

- Type of Data= Energy (J);
- Function Field=Instantaneous Value;
- Dimension= 32 bit;
- Modbus Register=150 (Register 151 declared implicitly because the dimension is 32 bit);
- Modbus Re Scale=152.

After the request, in Modbus register 150 you read 0x0004, in 151 you read 0x5678 and in register 152 is write 0x0006. The value obtained is:  $284280 \times 10^{(6)}$  J.



## MANUFACTURER SPECIFIC DATA

Using this function is possible to save into Modbus registers the part of M-Bus frame that is coded like Manufacturer Specific Data. Usually these data are at the end of the frame and after a DIF byte with the value 0x0F or 0x1F.

Here an example of the frame and the mentioned data (hexadecimal):

68 20 20 68 08 01 72 78 56 34 12 86 04 05 00 08 00 00 00 0C 78 78 56 34 12 0F 11 22 33 44 55 66 77 88 99 AA 74 16

If you want to save all ten bytes from Modbus register 200 you have to compile the fields "Manufacturer Specific Data", "Length (MSD) [1 - 241]" and Offset (MSD) [0 - 240] in this way: Manufacturer Specific Data: 200 | Length: 10 | Offset: 0.

On Modbus you will have this result: reg.200=1122h, reg.201=3344h, reg.202=5566h, reg.203=7788h, reg.204=99AAh

If you want to save only the byte 33 and 44 in the Modbus register 200 you have to compile the fields "Manufacturer Specific Data", "Length (MSD) [1 - 241]" and Offset (MSD) [0 - 240] in this way: Manufacturer Specific Data: 200 | Length: 2 | Offset: 2.

On Modbus you will have this result: reg.200=3344h

If you want to save only the byte 66 in the Modbus register 200 you have to compile the fields "Manufacturer Specific Data", "Length (MSD) [1 - 241]" and Offset (MSD) [0 - 240] in this way: Manufacturer Specific Data: 200 | Length: 1 | Offset: 5.

On Modbus you will have this result: reg.200=6600h

### UPDATE DEVICE:

By pressing the **“Update Device”** button, it is possible to load the created Configuration into the device; and also the Firmware, if necessary.

If you don't know the actual IP address of the device you have to use this procedure:

- Turn off the Device;
- Put Dip1 of 'Dip-Switch A' at ON position;
- Turn on the device
- Connect the Ethernet cable;
- Insert the IP **“192.168.2.205”**;
- Press the **“Ping”** button, **“Device Found!”** must appear”;
- Press the **“Next”** button;
- Select which operations you want to do;
- Press the **“Execute update firmware”** button to start the upload;
- When all the operations are **“OK”** turn off the Device;
- Put Dip1 of 'Dip-Switch A' at OFF position;
- Turn on the device.

If you know the actual IP address of the device you have to use this procedure:

- Turn on the Device with the Ethernet cable inserted;
- Insert the actual IP of the Converter;
- Press the **“Ping”** button, must appear **“Device Found!”**;
- Press the **“Next”** button;
- Select which operations you want to do;
- Press the **“Execute update firmware”** button to start the upload;
- When all the operations are **“OK”** the device automatically goes at Normal Mode.

At this point the configuration/firmware on the device is correctly updated.

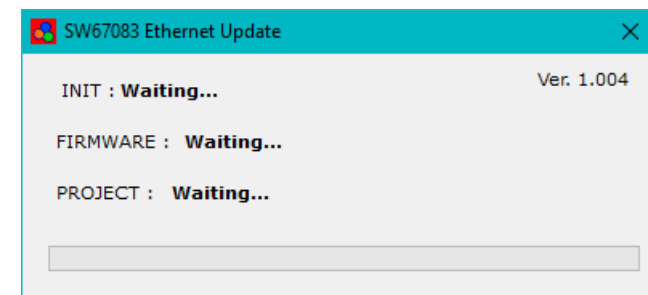
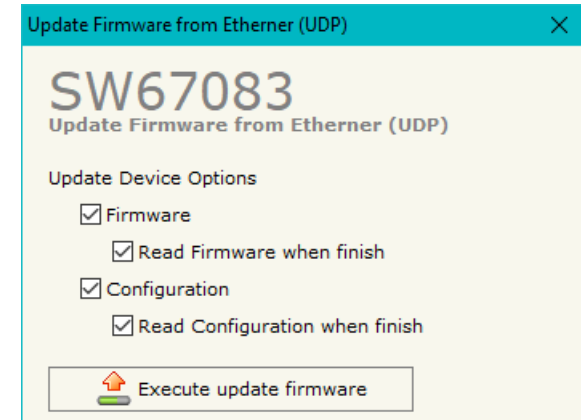
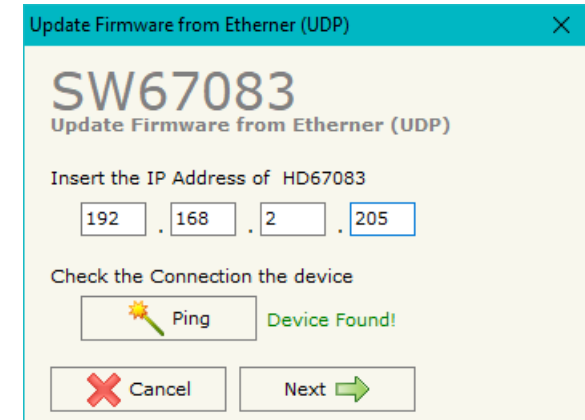


Figure 5: "Update device" windows

**Note:**

When you install a new version of the software, if it is the first time it is better you do the update of the Firmware in the HD67083 device.

**Note:**

When you receive the device, for the first time, you also have to update the Firmware in the HD67083 device.

**Warning:**

If Fig. 6 appears when you try to do the Update try these points before seeking assistance:

- Try to repeat the operations for the updating;
- Try with another PC;
- Try to restart the PC;
- If you are using the program inside a Virtual Machine, try to use in the main Operating System;
- If you are using Windows Seven or Vista or 8, make sure that you have the administrator privileges;
- Take attention at Firewall lock;
- Check the LAN settings.



In the case of HD67083 you have to use the software "SW67083": [www.adfweb.com/download/filefold/SW67083.zip](http://www.adfweb.com/download/filefold/SW67083.zip).

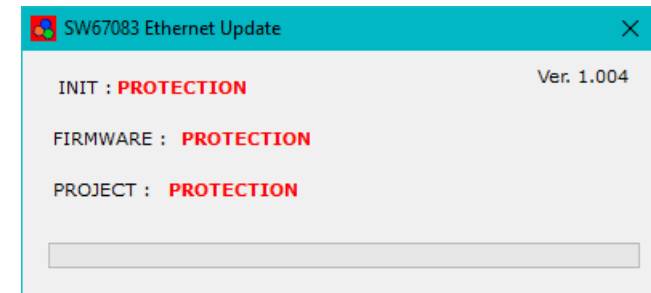



Figure 6: "Protection" window

**SCAN & DECODE FUNCTION:**

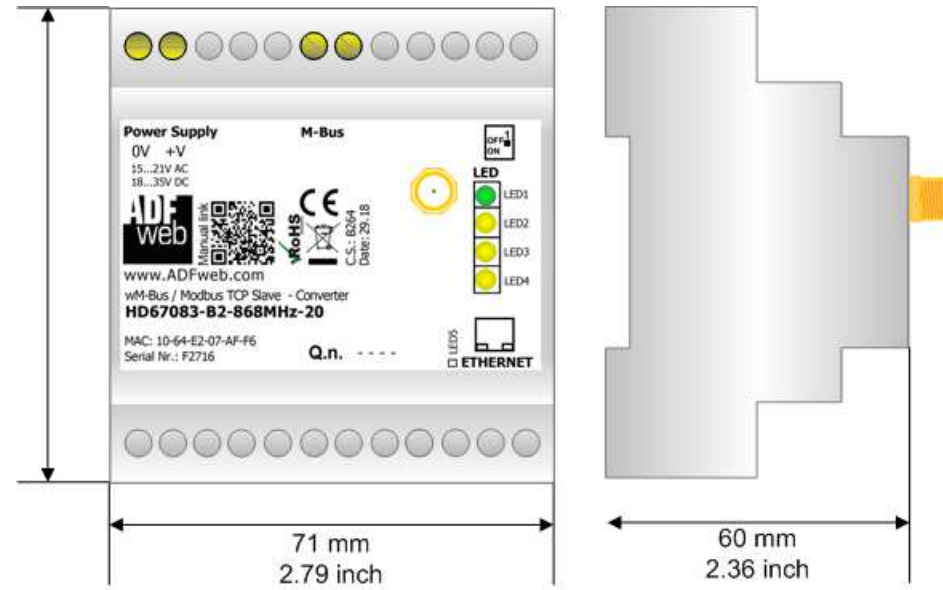
“SCAN & DECODE” functions are integrated in the configurator software SW67083. It is possible to access to these functions by simple click on the “ Scan & Decode” button.

It has the following characteristics:

- Possibility to scan M-Bus network;
- Automatic decode of M-Bus telegrams;
- Easy connection directly through the Ethernet port of the converters.

For the description of the function, it is possible to refer to this manual: [www.adfweb.com/download/filefold/SCAN&DECODE\\_ENG.pdf](http://www.adfweb.com/download/filefold/SCAN&DECODE_ENG.pdf)

**MECHANICAL DIMENSIONS:**



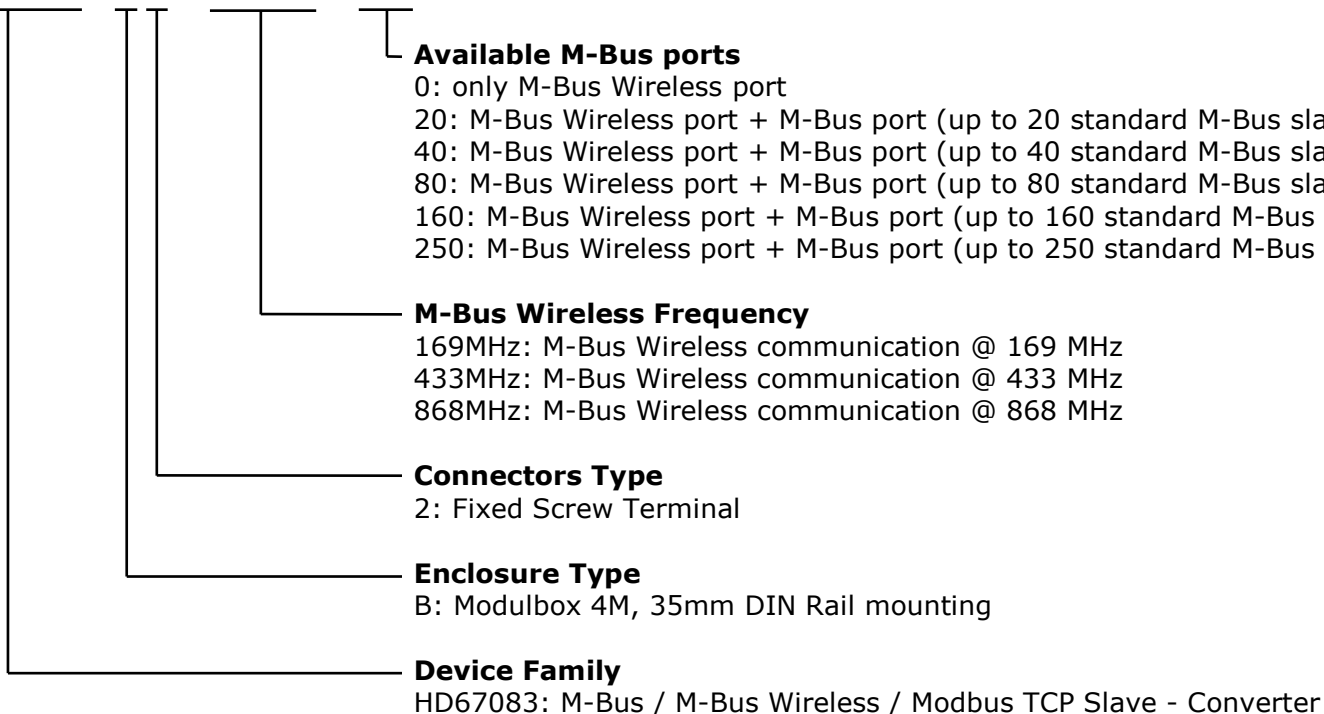
Housing: PVC  
Weight: 200g (Approx)

Figure 7: Mechanical dimensions scheme for HD67083-B2-xxxMHz-xxx

**ORDERING INFORMATIONS:**

The ordering part number is formed by a valid combination of the following:

**HD67083 – B 2 – xxxMHz – xxx**



Order Code: <b>HD67083-B2-169MHz-0</b>	-	M-Bus Wireless / Modbus TCP Slave – Converter
Order Code: <b>HD67083-B2-433MHz-0</b>	-	M-Bus Wireless / Modbus TCP Slave – Converter
Order Code: <b>HD67083-B2-868MHz-0</b>	-	M-Bus Wireless / Modbus TCP Slave – Converter
Order Code: <b>HD67083-B2-169MHz-20</b>	-	M-Bus / M-Bus Wireless / Modbus TCP Slave - Converter
Order Code: <b>HD67083-B2-433MHz-20</b>	-	M-Bus / M-Bus Wireless / Modbus TCP Slave - Converter
Order Code: <b>HD67083-B2-868MHz-20</b>	-	M-Bus / M-Bus Wireless / Modbus TCP Slave - Converter)
Order Code: <b>HD67083-B2-169MHz-40</b>	-	M-Bus / M-Bus Wireless / Modbus TCP Slave - Converter)
Order Code: <b>HD67083-B2-433MHz-40</b>	-	M-Bus / M-Bus Wireless / Modbus TCP Slave - Converter
Order Code: <b>HD67083-B2-868MHz-40</b>	-	M-Bus / M-Bus Wireless / Modbus TCP Slave - Converter
Order Code: <b>HD67083-B2-169MHz-80</b>	-	M-Bus / M-Bus Wireless / Modbus TCP Slave - Converter
Order Code: <b>HD67083-B2-433MHz-80</b>	-	M-Bus / M-Bus Wireless / Modbus TCP Slave - Converter
Order Code: <b>HD67083-B2-868MHz-80</b>	-	M-Bus / M-Bus Wireless / Modbus TCP Slave - Converter
Order Code: <b>HD67083-B2-169MHz-160</b>	-	M-Bus / M-Bus Wireless / Modbus TCP Slave - Converter
Order Code: <b>HD67083-B2-433MHz-160</b>	-	M-Bus / M-Bus Wireless / Modbus TCP Slave - Converter
Order Code: <b>HD67083-B2-868MHz-160</b>	-	M-Bus / M-Bus Wireless / Modbus TCP Slave - Converter
Order Code: <b>HD67083-B2-169MHz-250</b>	-	M-Bus / M-Bus Wireless / Modbus TCP Slave - Converter
Order Code: <b>HD67083-B2-433MHz-250</b>	-	M-Bus / M-Bus Wireless / Modbus TCP Slave - Converter
Order Code: <b>HD67083-B2-868MHz-250</b>	-	M-Bus / M-Bus Wireless / Modbus TCP Slave - Converter

**ACCESSORIES:**

Order Code: <b>APW020</b>	-	Power Supply for M-Bus Master device that supports up to 20 Slaves
Order Code: <b>APW040</b>	-	Power Supply for M-Bus Master device that supports up to 40 Slaves
Order Code: <b>APW080</b>	-	Power Supply for M-Bus Master device that supports up to 80 Slaves
Order Code: <b>APW160</b>	-	Power Supply for M-Bus Master device that supports up to 160 Slaves
Order Code: <b>APW250</b>	-	Power Supply for M-Bus Master device that supports up to 250 Slaves

**DISCLAIMER:**

All technical content within this document can be modified without notice. The content of the document is a under continual renewal. For losses due to fire, earthquake, third party access or other accidents, or intentional or accidental abuse, misuse, or use under abnormal conditions repairs are charged to the user. ADFweb.com S.r.l. will not be liable for accidental loss of use or inability to use this product, such as loss of business income. ADFweb.com S.r.l. shall not be liable for consequences of improper use.

**OTHER REGULATIONS AND STANDARDS:****WEEE INFORMATION**

Disposal of old electrical and electronic equipment (as in the European Union and other European countries with separate collection systems).

— This symbol on the product or on its packaging indicates that this product may not be treated as household rubbish. Instead, it should be taken to an applicable collection point for the recycling of electrical and electronic equipment. If the product is disposed correctly, you will help prevent potential negative environmental factors and impact of human health, which could otherwise be caused by inappropriate disposal. The recycling of materials will help to conserve natural resources. For more information about recycling this product, please contact your local city office, your household waste disposal service or the shop where you purchased the product.

**RESTRICTION OF HAZARDOUS SUBSTANCES DIRECTIVE**

The device respects the 2002/95/EC Directive on the restriction of the use of certain hazardous substances in electrical and electronic equipment (commonly referred to as Restriction of Hazardous Substances Directive or RoHS).

**CE MARKING**

The product conforms with the essential requirements of the applicable EC directives.



**WARRANTIES AND TECHNICAL SUPPORT:**

For fast and easy technical support for your ADFweb.com SRL products, consult our internet support at [www.adfweb.com](http://www.adfweb.com).  
Otherwise contact us at the address [support@adfweb.com](mailto:support@adfweb.com)

**RETURN POLICY:**

If while using your product you have any problem and you wish to exchange or repair it, please do the following:

- Obtain a Product Return Number (PRN) from our internet support at [www.adfweb.com](http://www.adfweb.com). Together with the request, you need to provide detailed information about the problem.
- Send the product to the address provided with the PRN, having prepaid the shipping costs (shipment costs billed to us will not be accepted).

If the product is within the warranty of twelve months, it will be repaired or exchanged and returned within three weeks. If the product is no longer under warranty, you will receive a repair estimate.



**ADFweb.com S.r.l.**  
Via Strada Nuova, 17  
IT-31010 Mareno di Piave  
TREVISO (Italy)  
Phone +39.0438.30.91.31  
Fax +39.0438.49.20.99  
[www.adfweb.com](http://www.adfweb.com)

