

User Manual

Revision 1.000
English

- ✦
- ✦ Power Supply 18...35V DC and 8...24 V AC
- ✦ Temperature range: -40°C/+85°C (-40°F/+185°F)



User Manual

INDEX:

	Page
INDEX	2
UPDATED DOCUMENTATION	2
REVISION LIST	2
WARNING	2
TRADEMARKS	2
SECURITY ALERT	3
EXAMPLE OF CONNECTION	4
CONNECTION SCHEME	5
CHARACTERISTICS	6
CONFIGURATION	6
POWER SUPPLY	7
FUNCTION MODES	8
LEDS	9
RS485	10
ETHERNET	11
USE OF COMPOSITOR SW67B37	12
NEW PROJECT / OPEN PROJECT	13
SOFTWARE OPTIONS	14
SET COMMUNICATION	16
OPC UA ACCESS	18
DMX DEFAULT VALUE	19
UPDATE DEVICE	20
MECHANICAL DIMENSIONS	22
ORDERING INFORMATIONS	23
ACCESSORIES	23
DISCLAIMER	24
OTHER REGULATIONS AND STANDARDS	24
WARRANTIES AND TECHNICAL SUPPORT	25
RETURN POLICY	25

UPDATED DOCUMENTATION:

Dear customer, we thank you for your attention and we remind you that you need to check that the following document is:

- ✚ Updated
- ✚ Related to the product you own

To obtain the most recently updated document, note the “document code” that appears at the top right-hand corner of each page of this document.

With this “Document Code” go to web page www.adfweb.com/download/ and search for the corresponding code on the page. Click on the proper “Document Code” and download the updates.

REVISION LIST:

Revision	Date	Author	Chapter	Description
1.000	14/03/2022	Tf	All	First release version

WARNING:

ADFweb.com reserves the right to change information in this manual about our product without warning.
ADFweb.com is not responsible for any error this manual may contain.

TRADEMARKS:

All trademarks mentioned in this document belong to their respective owners.

SECURITY ALERT:**GENERAL INFORMATION**

To ensure safe operation, the device must be operated according to the instructions in the manual. When using the device, legal and safety regulation are required for each individual application. The same applies also when using accessories.

INTENDED USE

Machines and systems must be designed so the faulty conditions do not lead to a dangerous situation for the operator (i.e. independent limit switches, mechanical interlocks, etc.).

QUALIFIED PERSONNEL

The device can be used only by qualified personnel, strictly in accordance with the specifications.

Qualified personnel are persons who are familiar with the installation, assembly, commissioning and operation of this equipment and who have appropriate qualifications for their job.

RESIDUAL RISKS

The device is state-of-the-art and is safe. The instruments can represent a potential hazard if they are inappropriately installed and operated by untrained personnel. These instructions refer to residual risks with the following symbol:

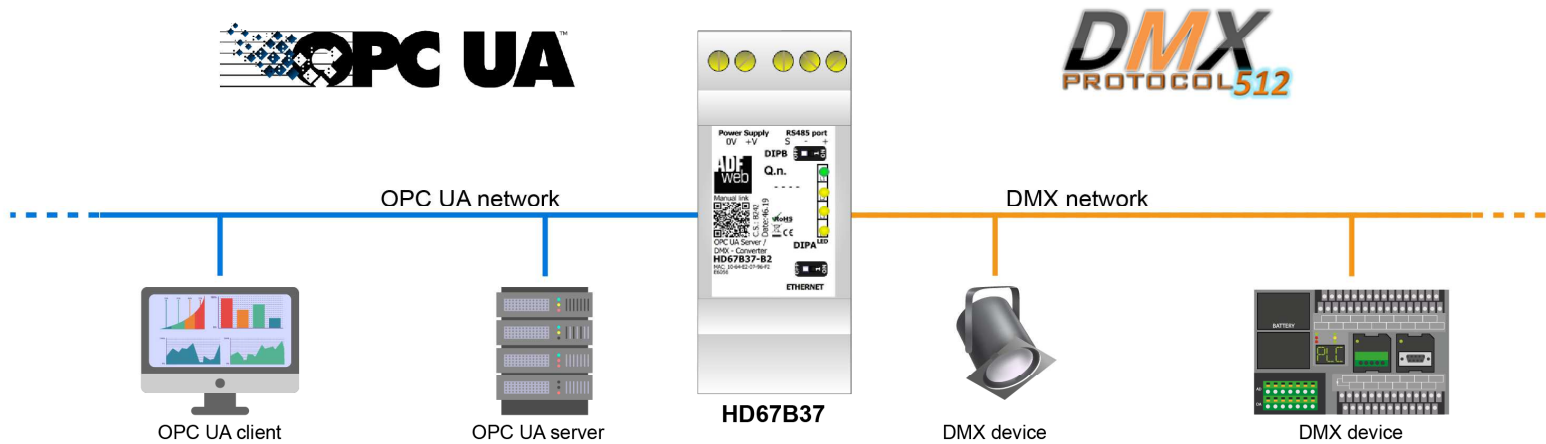


This symbol indicates that non-observance of the safety instructions is a danger for people that could lead to serious injury or death and / or the possibility of damage.

CE CONFORMITY

The declaration is made by our company. You can send an email to or give us a call if you need it.

EXAMPLE OF CONNECTION:



ADFweb ADFweb.com srl
 Tel. +39 0438 309 131 - Fax +39 0438 492 099
 info@adfweb-com - www.adfweb.com

CONNECTION SCHEME:

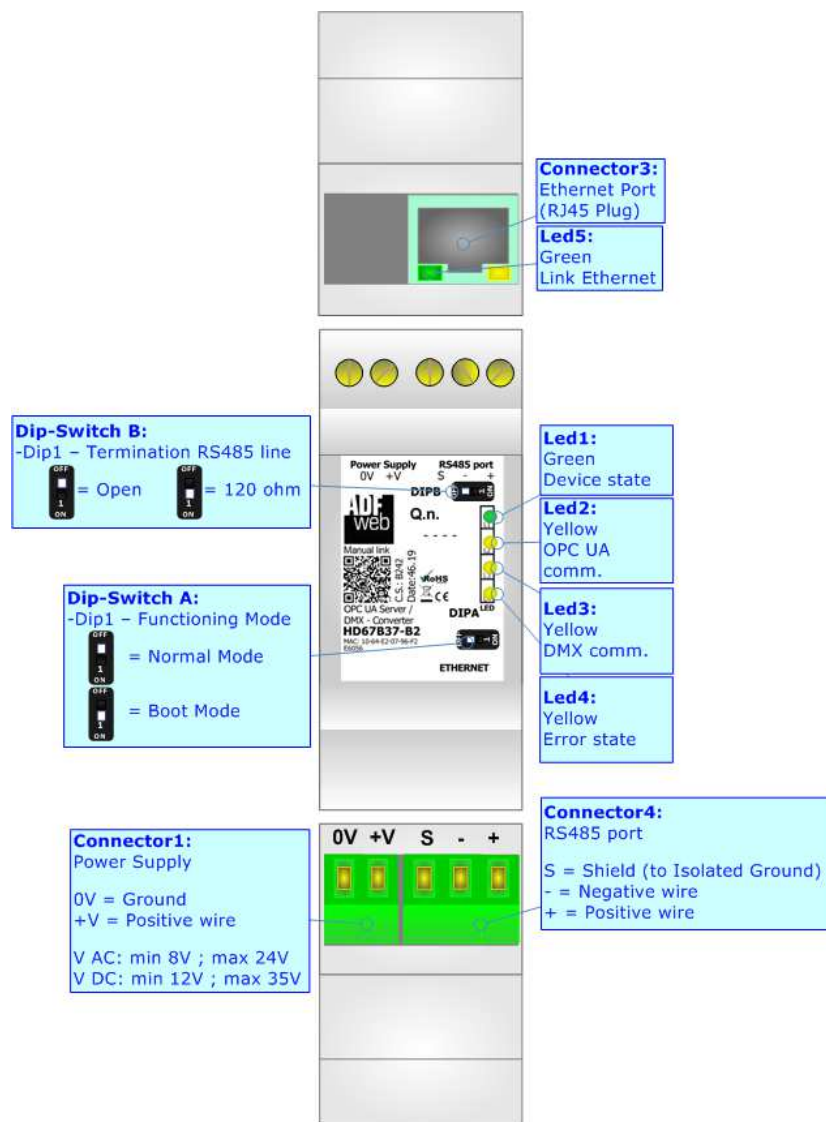


Figure 1: Connection scheme for HD67B37-B2

CHARACTERISTICS:

The HD67B37-B2 is a OPC UA Server / DMX converter.

It allows the following characteristics:

- Up to 512 bytes in reading and 512 bytes in writing;
- Two-directional information between DMX and OPC UA;
- Mountable on 35mm Rail DIN;
- Wide power supply input range: 8...24V AC or 12...35V DC;
- Wide temperature range: -40°C / 85°C [-40°F / +185°F].

CONFIGURATION:

You need Compositor SW67B37 software on your PC in order to perform the following:

- Define the parameter of the OPC UA;
- Define the parameter of the DMX;
- Define the list of available OPC UA variables;
- Update the device.

POWER SUPPLY:

The devices can be powered between a wide range of tensions. For more details see the two tables below.

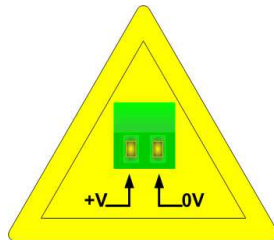
	VAC		VDC	
	Vmin	Vmax	Vmin	Vmax
HD67B37-B2	8V	24V	12V	35V

Consumption at 24V DC:

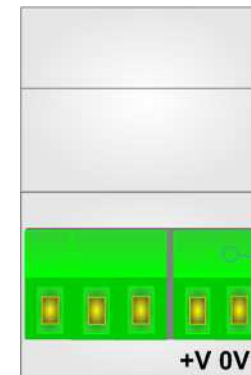
Device	W/VA
HD67B37-B2	4



Caution: Not reverse the polarity power



HD67B37-B2



Connector1:
Power Supply
0V = Ground
+V = Positive wire
V AC: min 8V ; max 24V
V DC: min 12V ; max 35V

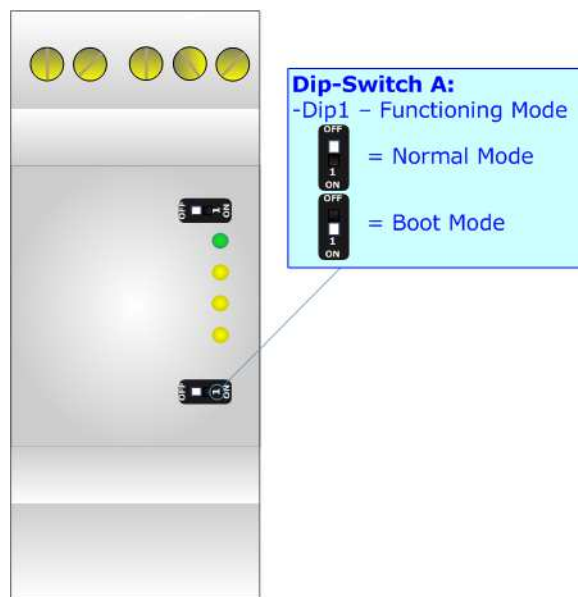
FUNCTION MODES:

The device has got two functions mode depending of the position of the Dip1 of 'Dip-Switch A':

- The first, with Dip1 in Off position (factory setting), is used for the normal working of the device.
- The second, with Dip1 in On position, is used for upload the Project/Firmware.

For the operations to follow for the updating (see 'UPDATE DEVICE' section).

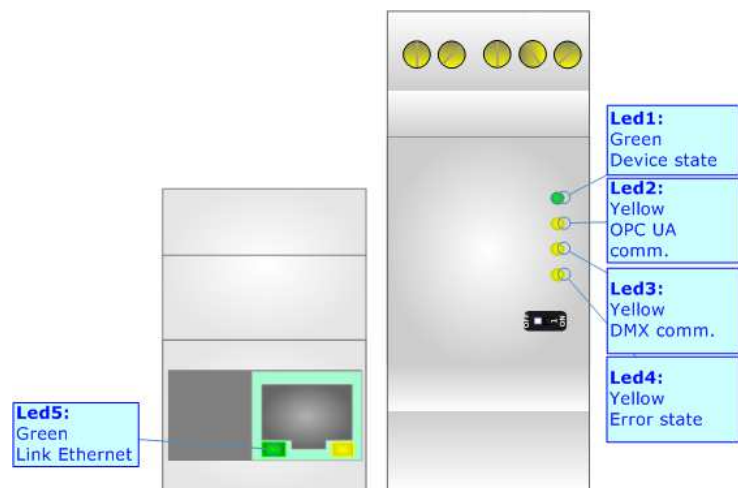
According to the functioning mode, the LEDs will have specifics functions (see 'LEDS' section).



LEDS:

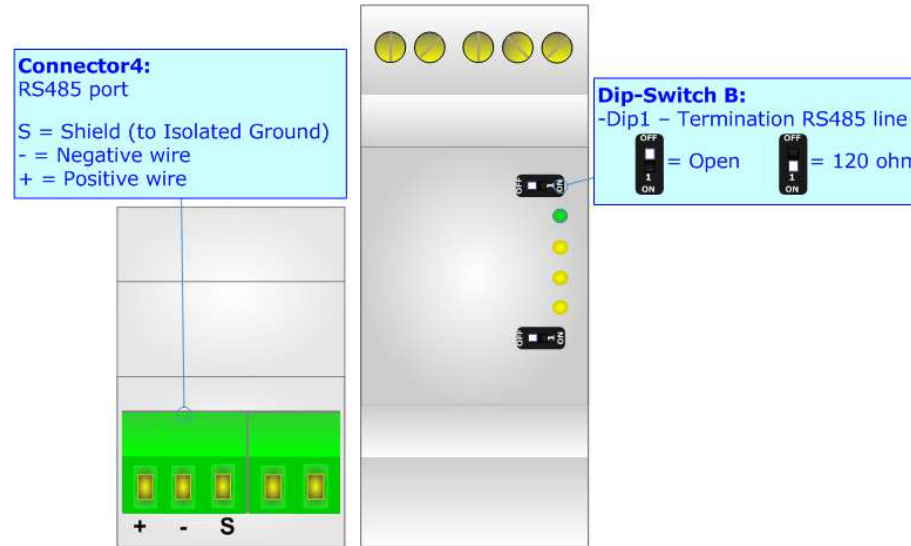
The device has got six LEDs that are used to give information of the functioning status. The various meanings of the LEDs are described in the table below.

LED	Normal Mode	Boot Mode
1: Device State (green)	Blinks slowly (~1Hz)	Blinks quickly: Boot state Blinks very slowly (~0.5Hz): update in progress
2: OPC UA comm. (yellow)	Flashing: OPC UA request OFF: No OPC UA request	Blinks quickly: Boot state Blinks very slowly (~0.5Hz): update in progress
3: DMX comm. (yellow)	Flashing: DMX communication OFF: No DMX communication	Blinks quickly: Boot state Blinks very slowly (~0.5Hz): update in progress
4: Error state (yellow)	ON: An error has occurred OFF: The device is correctly running	Blinks quickly: Boot state Blinks very slowly (~0.5Hz): update in progress
5: Link Ethernet (green)	ON: Ethernet cable connected OFF: Ethernet cable disconnected	ON: Ethernet cable connected OFF: Ethernet cable disconnected



RS485:

For terminate the RS485 line with a 120Ω resistor it is necessary to put ON dip 1, like in figure.



The maximum length of the cable should be 1200m (4000 feet).

Here some codes of cables:

- Belden: p/n 8132 - 2x 28AWG stranded twisted pairs conductor + foil shield + braid shield;
- Belden p/n 82842 - 2x 24AWG stranded twisted pairs conductor + foil shield + braid shield;
- Tasker: p/n C521 - 1x 24AWG twisted pair conductor + foil shield + braid shield;
- Tasker: p/n C522 - 2x 24AWG twisted pairs conductor + foil shield + braid shield.

ETHERNET:


The Ethernet connection must be made using Connector3 of HD67B37-B2 with at least a Category 5E cable. The maximum length of the cable should not exceed 100m. The cable has to conform to the T568 norms relative to connections in cat.5 up to 100 Mbps. To connect the device to an Hub/Switch is recommended the use of a straight cable, to connect the device to a PC/PLC/other is recommended the use of a cross cable.



USE OF COMPOSITOR SW67B37:

To configure the Converter, use the available software that runs with Windows called SW67B37. It is downloadable on the site www.adfweb.com and its operation is described in this document. *(This manual is referenced to the last version of the software present on our web site)*. The software works with MSWindows (XP, Vista, Seven, 8, 10, 11; 32/64bit).

When launching the SW67B37, the window below appears (Fig. 2).

 **Note:**
It is necessary to have installed .Net Framework 4.

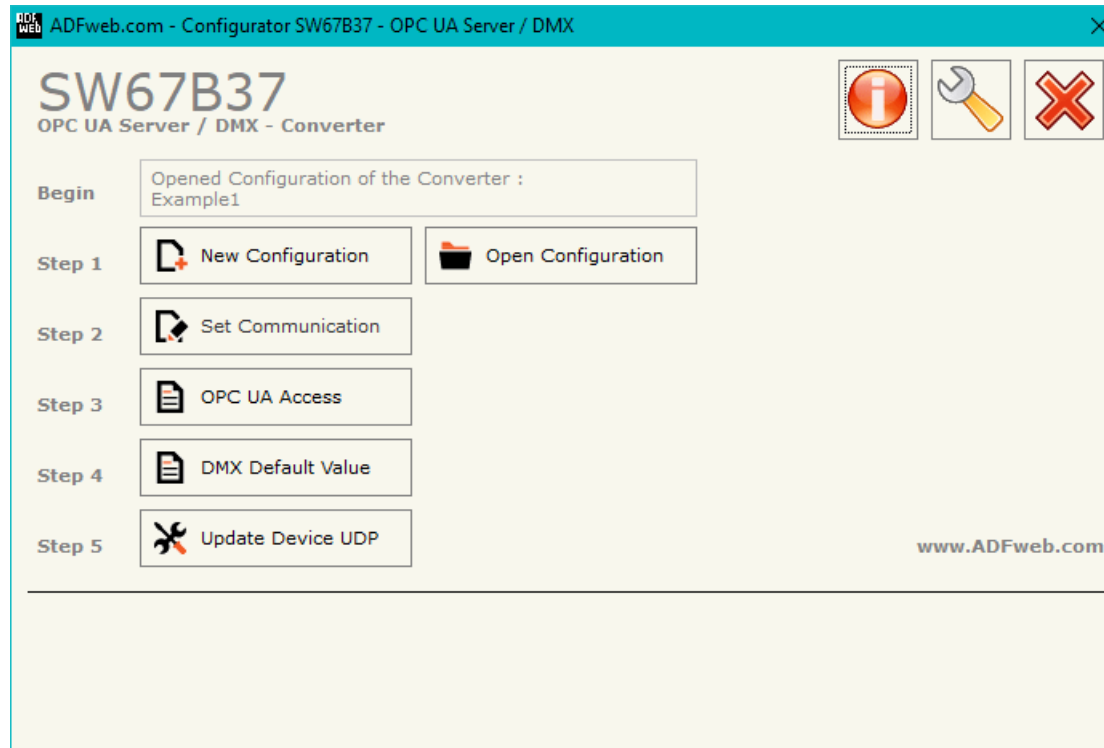
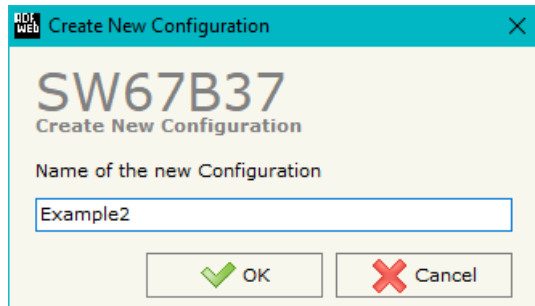


Figure 2: Main window for SW67B37

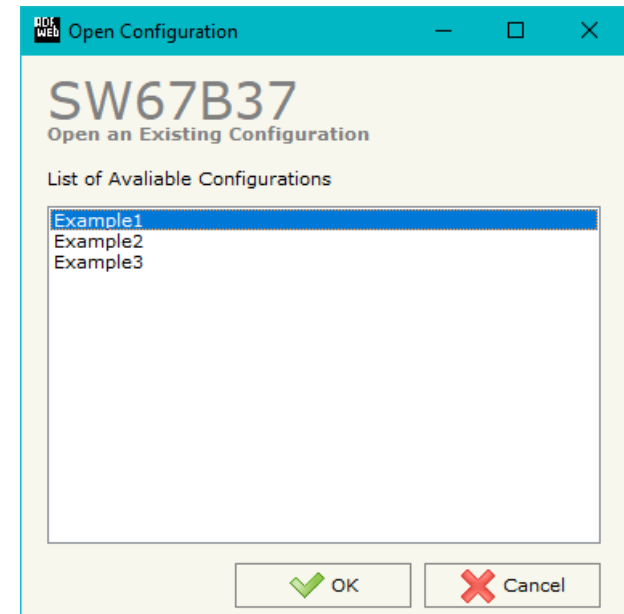
NEW CONFIGURATION / OPEN CONFIGURATION:

The “**New Configuration**” button creates the folder which contains the entire device’s configuration.




A device’s configuration can also be imported or exported:

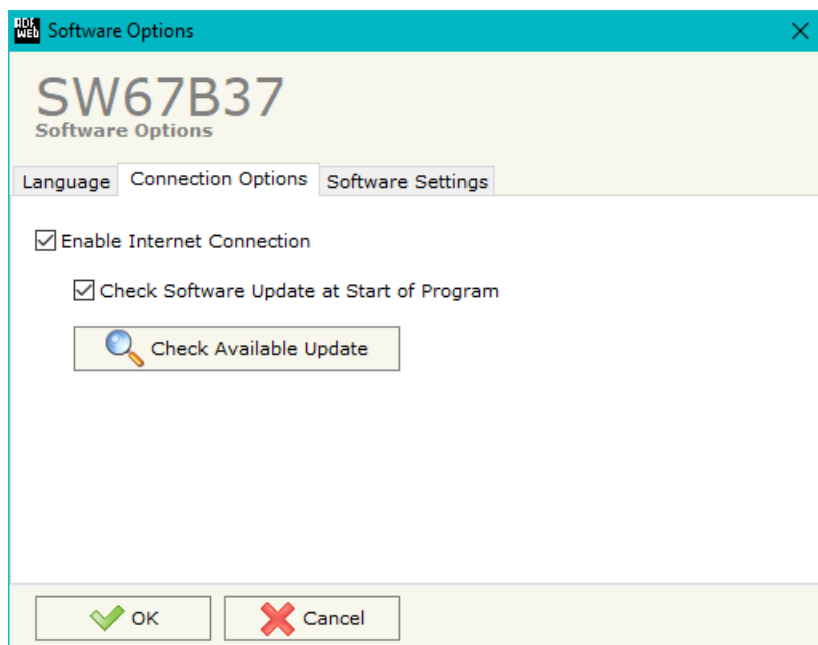
- To clone the configurations of a programmable “OPC UA Server / DMX - Converter” in order to configure another device in the same manner, it is necessary to maintain the folder and all its contents;
- To clone a project in order to obtain a different version of the project, it is sufficient to duplicate the project folder with another name and open the new folder with the button “**Open Configuration**”.



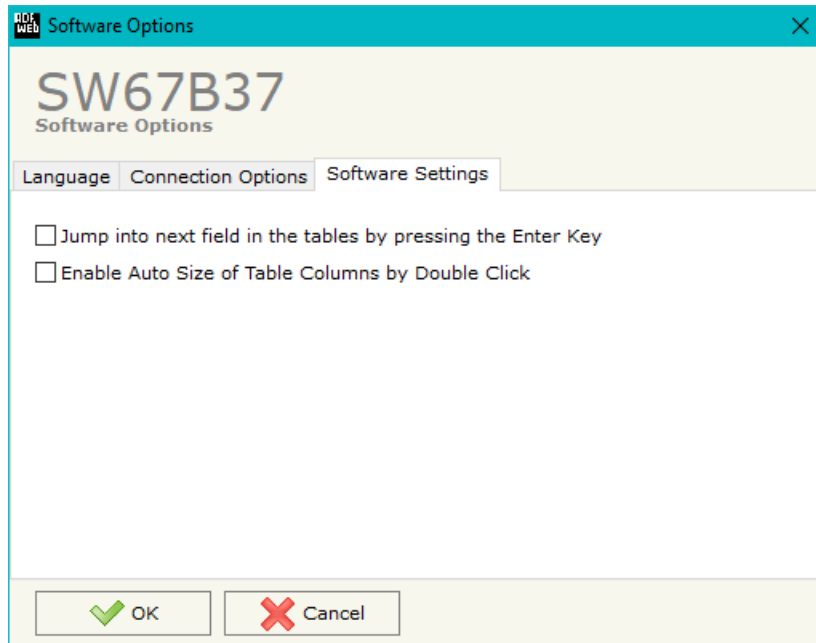
SOFTWARE OPTIONS:

By pressing the “**Settings**” () button there is the possibility to change the language of the software and check the updatings for the compositor.

In the section “Language” it is possible to change the language of the software.



In the section “Connection Options”, it is possible to check if there are some updatings of the software compositor in ADFweb.com website. Checking the option “**Check Software Update at Start of Program**”, the SW67B37 check automatically if there are updatings when it is launched.



In the section "Software Settings", it is possible to enable/disable some keyboard's commands for an easier navigation inside the tables contained in the different sections of the software.

SET COMMUNICATION:

This section define the fundamental communication parameters of two buses, OPC UA Server and DMX.

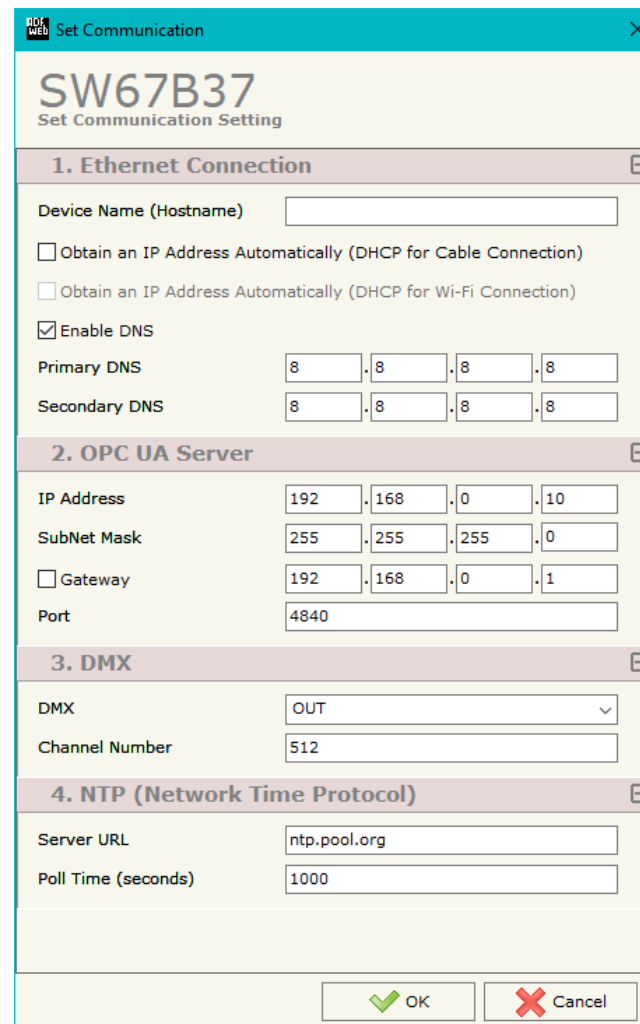
By Pressing the **"Set Communication"** button from the main window for SW67B37 (Fig. 2) the window "Set Communication" appears (Fig. 3).

The means of the fields for "Ethernet Connection" are:

- In the field **"Device Name (Hostname)"** the Hostname to assign to the converter is defined;
- If the field **"Obtain an IP Address Automatically (DHCP for Cable Connection)"** is checked, DHCP for LAN connection is enabled;
- If the field **"Enable DNS"** is checked, DNS protocol is enabled;
- In the field **"Primary DNS"** the IP Address of the primary DNS server is defined;
- In the field **"Secondary DNS"** the IP Address of the secondary DNS server is defined.

The means of the fields for "OPC UA" are:

- In the field **"IP Address"** the IP address of the converter is defined;
- In the field **"Subnet Mask"** the SubNet Mask of the converter is defined;
- In the field **"GATEWAY"** the default gateway of the net is defined. This feature can be enabled or disabled pressing the Check Box field. This feature is used for going out of the net;
- In the field **"Port"** the port used for OPC UA communication is defined.



The screenshot shows the 'Set Communication' window for device SW67B37. It is organized into four main sections:

- 1. Ethernet Connection:** Includes a text field for 'Device Name (Hostname)', two checkboxes for 'Obtain an IP Address Automatically (DHCP for Cable Connection)' and 'Obtain an IP Address Automatically (DHCP for Wi-Fi Connection)', a checked checkbox for 'Enable DNS', and two rows of IP address input fields for 'Primary DNS' and 'Secondary DNS'.
- 2. OPC UA Server:** Includes IP address input fields for 'IP Address' (192.168.0.10), 'SubNet Mask' (255.255.255.0), and 'Gateway' (192.168.0.1), and a text field for 'Port' (4840).
- 3. DMX:** Includes a dropdown menu for 'DMX' (set to 'OUT') and a text field for 'Channel Number' (512).
- 4. NTP (Network Time Protocol):** Includes a text field for 'Server URL' (ntp.pool.org) and a text field for 'Poll Time (seconds)' (1000).

At the bottom right, there are 'OK' and 'Cancel' buttons.

Figure 3: "Set Communication" window

The means of the fields for "DMX" section are:

- In the field "**DMX**" it is possible to define if the converter will act as DMX controller ("OUT") or as DMX device ("IN");
- In the field "**Channel Number**" the number of channels of the DMX side is defined.

The means of the fields for "NTP (Network Time Protocol)" are:

- In the field "**Server URL**" the URL or the IP Address of the NTP Server is defined;
- In the field "**Poll Time (seconds)**" the polling time for the time synchronization is defined.

OPC UA ACCESS:

By Pressing the “**OPC UA Access**” button from the main window for SW67B37 (Fig. 2) the window “OPC UA Server Access” appears (Fig. 5). This section is used to define the list of OPC UA variables to read/write.

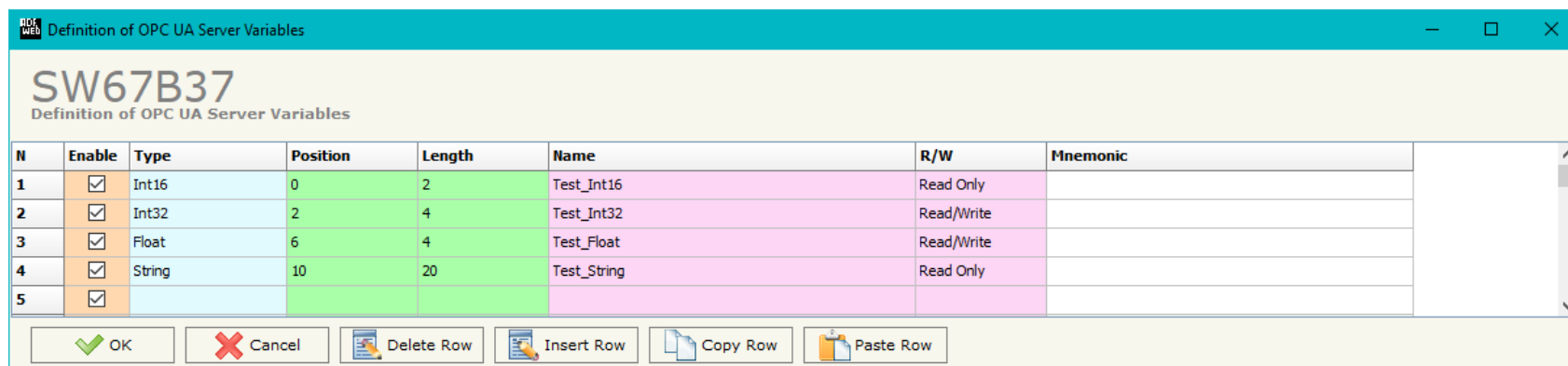


Figure 4: “OPC UA Server Access” window

The means of the checkboxes inside the table are:

- If the field “**Enable**” is checked, the OPC UA variable is enabled;
- In the field “**Type**” the data format of the OPC UA variable is defined;
- In the field “**Position**” the starting byte of the internal memory arrays where getting the value is defined;
- In the field “**Length**” the byte length of the OPC UA variable is defined;
- In the field “**Name**” the name of the OPC UA variable is defined;
- In the field “**R/W**” the access type of the OPC UA variable is defined;
- In the field “**Mnemonic**” a description of the OPC UA variable is defined.

DMX DEFAULT VALUE:

By pressing the “**DMX Default Value**” button from the main window for SW67B37 (Fig. 2) the “DMX Default Value” window appears (Fig. 5).

In this section it is possible to define the default value for each channel of the DMX array when the converter is turned ON.

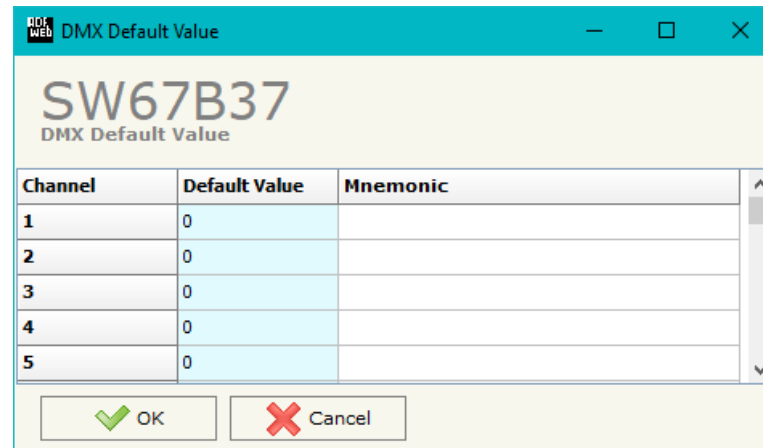


Figure 5: “DMX Default Value” window

UPDATE DEVICE:

By pressing the **“Update Device”** button, it is possible to load the created Configuration into the device; and also the Firmware, if necessary. This by using the Ethernet port.

If you don't know the actual IP address of the device you have to use this procedure:

- Turn OFF the Device;
- Put Dip1 of 'Dip-Switch A' in ON position;
- Turn ON the device
- Connect the Ethernet cable;
- Insert the IP **“192.168.2.205”**;
- Select which operations you want to do;
- Press the **“Execute update firmware”** button to start the upload;
- When all the operations are “OK” turn OFF the Device;
- Put Dip1 of 'Dip-Switch A' in OFF position;
- Turn ON the device.

If you know the actual IP address of the device, you have to use this procedure:

- Turn ON the Device with the Ethernet cable inserted;
- Insert the actual IP of the Converter;
- Select which operations you want to do;
- Press the **“Execute update firmware”** button to start the upload;
- When all the operations are “OK” the device automatically goes at Normal Mode.

At this point the configuration/firmware on the device is correctly updated.

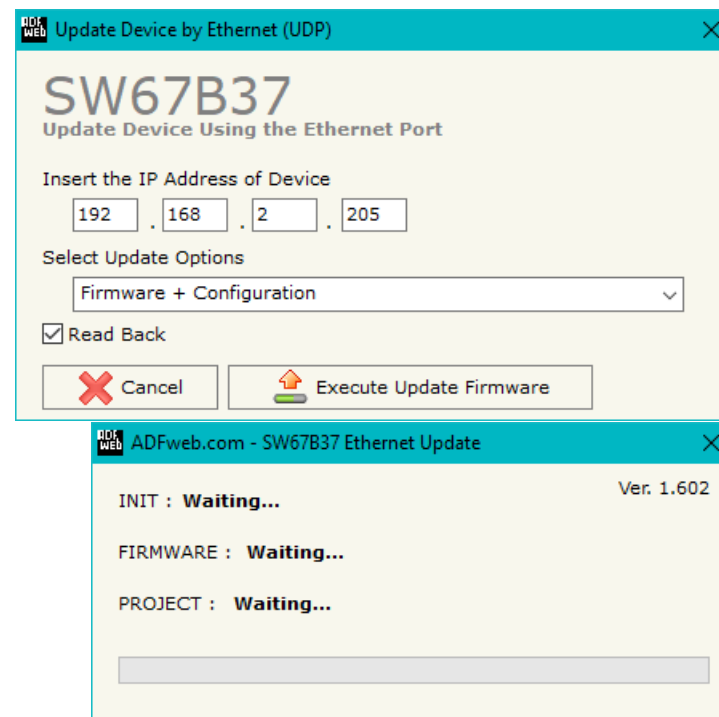


Figure 6: "Update device" windows



Note:

When you receive the device, for the first time, you also have to update the Firmware in the HD67B37 device.



Warning:

If Fig. 7 appears when you try to do the Update try these points before seeking assistance:

- Try to repeat the operations for the updating;
- Try with another PC;
- Try to restart the PC;
- Check the LAN settings;
- If you are using the program inside a Virtual Machine, try to use in the main Operating System;
- If you are using Windows Seven, Vista, 8, 10 or 11 make sure that you have the administrator privileges;
- In case you have to program more than one device, using the "UDP Update", you have to cancel the ARP table every time you connect a new device on Ethernet. For do this you have to launch the "Command Prompt" and write the command "arp -d". Pay attention that with Windows Vista, Seven, 8, 10 you have to launch the "Command Prompt" with Administrator Rights;
- Pay attention at Firewall lock.



Warning:

In the case of HD67B37 you have to use the software "SW67B37": www.adfweb.com/download/filefold/SW67B37.zip.

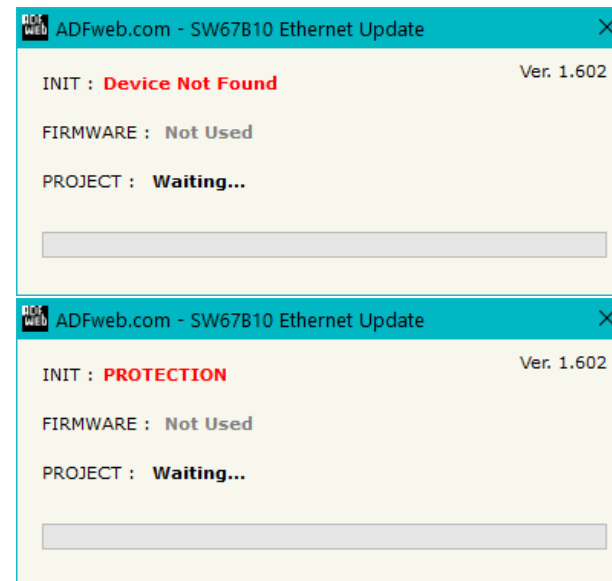
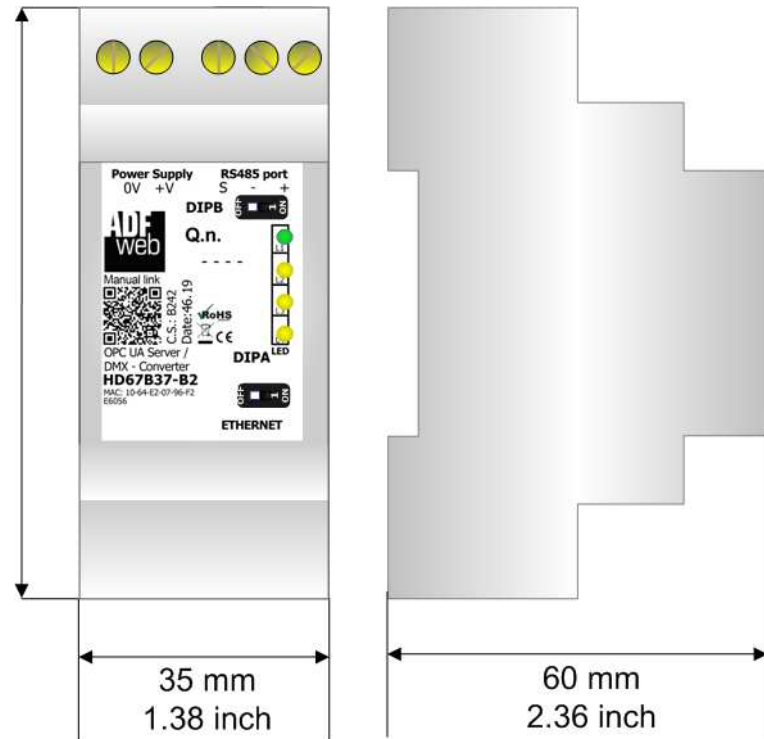


Figure 7: "Error" window

MECHANICAL DIMENSIONS:



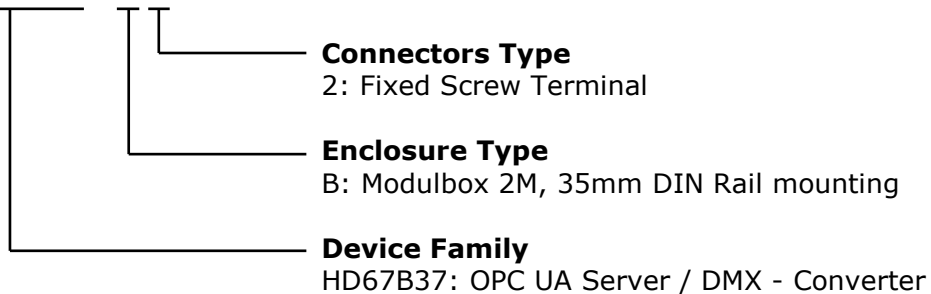
Housing: PVC
 Weight: 200g
 (Approx)

Figure 8: Mechanical dimensions scheme for HD67B37-B2

ORDERING INFORMATIONS:

The ordering part number is formed by a valid combination of the following:

HD67B37 - B 2



Order Code: **HD67B37-B2** - OPC UA Server / DMX - Converter

ACCESSORIES:

Order Code: **AC34011** - 35mm Rail DIN - Power Supply 220/240V AC 50/60Hz – 12 V DC

Order Code: **AC34012** - 35mm Rail DIN - Power Supply 220/240V AC 50/60Hz – 24 V DC

DISCLAIMER:

All technical content within this document can be modified without notice. The content of the document is a under continual renewal. For losses due to fire, earthquake, third party access or other accidents, or intentional or accidental abuse, misuse, or use under abnormal conditions repairs are charged to the user. ADFweb.com S.r.l. will not be liable for accidental loss of use or inability to use this product, such as loss of business income. ADFweb.com S.r.l. shall not be liable for consequences of improper use.

OTHER REGULATIONS AND STANDARDS:**WEEE INFORMATION**

Disposal of old electrical and electronic equipment (as in the European Union and other European countries with separate collection systems).

— This symbol on the product or on its packaging indicates that this product may not be treated as household rubbish. Instead, it should be taken to an applicable collection point for the recycling of electrical and electronic equipment. If the product is disposed correctly, you will help prevent potential negative environmental factors and impact of human health, which could otherwise be caused by inappropriate disposal. The recycling of materials will help to conserve natural resources. For more information about recycling this product, please contact your local city office, your household waste disposal service or the shop where you purchased the product.

RESTRICTION OF HAZARDOUS SUBSTANCES DIRECTIVE

The device respects the 2002/95/EC Directive on the restriction of the use of certain hazardous substances in electrical and electronic equipment (commonly referred to as Restriction of Hazardous Substances Directive or RoHS).

CE MARKING

The product conforms with the essential requirements of the applicable EC directives.

WARRANTIES AND TECHNICAL SUPPORT:

For fast and easy technical support for your ADFweb.com SRL products, consult our internet support at www.adfweb.com. Otherwise contact us at the address support@adfweb.com

RETURN POLICY:

If while using your product you have any problem and you wish to exchange or repair it, please do the following:

- ➔ Obtain a Product Return Number (PRN) from our internet support at www.adfweb.com. Together with the request, you need to provide detailed information about the problem.
- ➔ Send the product to the address provided with the PRN, having prepaid the shipping costs (shipment costs billed to us will not be accepted).

If the product is within the warranty of twelve months, it will be repaired or exchanged and returned within three weeks. If the product is no longer under warranty, you will receive a repair estimate.



ADFweb.com S.r.l.
 Via Strada Nuova, 17
 IT-31010 Mareno di Piave
 TREVISO (Italy)
 Phone +39.0438.30.91.31
 Fax +39.0438.49.20.99
www.adfweb.com

